
ERRATUM

Addendum to Wu Y, Doi K, Giger M: Detection of lung nodules in digital chest radiographs using artificial neural networks: A pilot study. *J Digit Imaging* 8:88-94, 1995

In the report cited above, Fig 1 appeared upside down. The corrected version of Fig 1 follows.

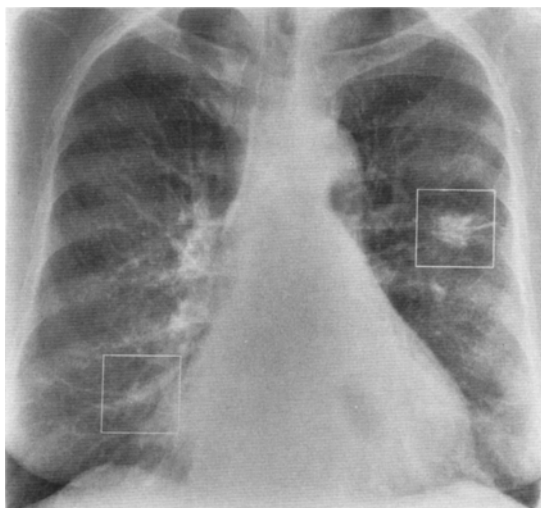


Fig 1. Demonstration of ROI selection in a digital chest radiograph. Two ROIs, one containing a nodule (above the heart in the left lung) and another containing normal region of lung (next to the heart in the right lung), are shown in the figure.