

PENALTY METHOD WITH P1/P1 FINITE ELEMENT APPROXIMATION FOR THE STOKES EQUATIONS UNDER SLIP BOUNDARY CONDITION

TAKAHITO KASHIWABARA, ISSEI OIKAWA, AND GUANYU ZHOU

ABSTRACT. We consider the P1/P1 or P1b/P1 finite element approximations to the Stokes equations in a bounded smooth domain subject to the slip boundary condition. A penalty method is applied to address the essential boundary condition $u \cdot n = g$ on $\partial\Omega$, which avoids a variational crime and simultaneously facilitates the numerical implementation. We give $O(h^{1/2} + \epsilon^{1/2} + h/\epsilon^{1/2})$ -error estimate for velocity and pressure in the energy norm, where h and ϵ denote the discretization parameter and the penalty parameter, respectively. In the two-dimensional case, it is improved to $O(h + \epsilon^{1/2} + h^2/\epsilon^{1/2})$ by applying reduced-order numerical integration to the penalty term. The theoretical results are confirmed by numerical experiments.

1. INTRODUCTION

In this paper, letting $\Omega \subset \mathbb{R}^N$ ($N = 2, 3$) be a bounded smooth domain, we consider the Stokes equations subject to the non-homogeneous slip boundary condition as follows:

$$(1.1) \quad \begin{cases} u - \nu \Delta u + \nabla p = f & \text{in } \Omega, \\ \operatorname{div} u = 0 & \text{in } \Omega, \\ u \cdot n = g & \text{on } \partial\Omega, \\ (I - n \otimes n) \sigma(u, p) n = \tau & \text{on } \partial\Omega, \end{cases}$$

where $u : \Omega \rightarrow \mathbb{R}^N$ and $p : \Omega \rightarrow \mathbb{R}$ are the velocity and pressure of the fluid respectively, and $\nu > 0$ is a viscosity constant. Moreover, f represents the given body force, g the prescribed outgoing flow on the boundary $\Gamma := \partial\Omega$, and τ the prescribed traction vector on Γ in the tangential direction, with $\sigma(u, p) = -pI + \nu(\nabla u + (\nabla u)^T)$ being the Cauchy stress tensor associated with the fluid. The outer unit normal to the boundary Γ is denoted by n . The first term in $(1.1)_1$ is added in order to ensure coercivity of the problem without taking into account rigid body movements. We impose the compatibility condition between $(1.1)_2$ and $(1.1)_3$ which reads

$$(1.2) \quad \int_{\Gamma} g \, d\gamma = 0.$$

The slip boundary condition $(1.1)_3$ – $(1.1)_4$ (or its variant the Navier boundary condition) is now widely accepted as one of the standard boundary conditions for the Navier-Stokes equations. There are many applications of the slip boundary conditions to real flow problems; here we only mention the coating problem [25] and boundary conditions of high Reynolds number flow [21]. For more details on the application side of slip-type boundary conditions, we refer to Stokes and Carey [27] and references therein; see also John [16] for generalization combined with leak-type boundary conditions.

In the present paper, our motivation to consider problem (1.1) consists in dealing with some mathematical difficulties which are specific to its finite element approximation. As shown by Solonnikov and Ščadilov in [26] (see also Beirão da Veiga [3] for a generalized non-homogeneous problem), proving the existence, uniqueness, and regularity of a solution of (1.1) does not reveal essentially more difficulty compared with the case of Dirichlet boundary conditions. Then one is led to hope that its finite element approximation could also be treated analogously to the Dirichlet case. However, it is known that a

2010 *Mathematics Subject Classification.* Primary: 65N30; Secondary: 35Q30.

Key words and phrases. Finite element method; Stokes equations; Slip boundary condition; Penalty method; Reduced-order numerical integration.

naive discretization of (1.1), especially when a smoothly curved domain Ω is approximated by a polyhedral domain Ω_h , leads to a variational crime in which we no longer obtain convergence of approximate solutions.

Let us describe this phenomenon assuming $g = 0$ and considering piecewise linear approximation of velocity. In view of the weak formulation of the continuous problem, see (2.5) below, a natural choice of the space to approximate velocity would be (we adopt the notation of Section 3):

$$(1.3) \quad V_{hn} = \{v_h \in V_h : v_h \cdot n_h = 0 \text{ on } \Gamma_h\}, \quad \Gamma_h := \partial\Omega_h,$$

where n_h denotes the outer unit normal associated to Γ_h . Now suppose that $N = 2$ and that any two adjacent edges that constitute Γ_h are not parallel. Then, one readily sees that V_{hn} above reduces to $\tilde{V}_h = V_h \cap H_0^1(\Omega_h)^2$. As a result, the finite element solution computed using V_{hn} is nothing but the one satisfying the Dirichlet boundary condition, which completely fails to approximate the slip boundary condition. For $N = 3$ or quadratic approximation (or whatever else), we may well expect similar undesirable reduction in the degrees of freedom that should have been left for the velocity components, which accounts for the variational crime.

One way to overcome the variational crime is to replace the constraint in (1.3) by $(v_h \cdot n)(P) = 0$ for each boundary node P . This strategy was employed by Tabata and Suzuki [30] where Ω is a spherical shell; see also Tabata [28, 29]. Extension of the idea to the quadratic approximation was proposed by Bänsch and Deckelnick in [1] using some abstract transformation $G_h : \Omega_h \rightarrow \Omega$ introduced by Lenoir [22]. For Ω of general shape, the exact values for $n(P)$ or $n \circ G_h(P)$ may not be available. In this regard, some average of n_h 's near the boundary node P can be used as approximation of those unavailable values. This idea was numerically tested by Bänsch and Höhn in [2] for $N = 3$ and by Dione, Tibirna and Urquiza [9] for $N = 2$ (with penalty formulation), showing good convergence property. However, rigorous and systematic evaluation of those approximations is non-trivial and does not seem to be known in the literature. Moreover, implementation of constraints like $(v_h \cdot n)(P) = 0$ in a real finite element code is also non-trivial and requires special computational techniques (see e.g. Gresho and Sani [14, p. 540] and [1, Section 5]), which are not necessary to treat the Dirichlet boundary condition.

In view of these situations, in the present paper we would like to investigate a finite element scheme to (1.1) such that: 1) rigorous error analysis can be performed; 2) numerical implementation is as easy as for the Dirichlet case. With this aim we adopt a *penalty approach* proposed by Dione and Urquiza [10] (see also [9]) which, in the continuous setting, replaces the Dirichlet condition (1.1)₃ by the Robin-type one involving a very small number (called the penalty parameter) $\epsilon > 0$, i.e., $\sigma(u, p)n \cdot n + \frac{1}{\epsilon}(u \cdot n - g) = 0$ on Γ . At the weak formulation level, this amounts to removing the constraint $v \cdot n = 0$ from the test function space and introducing a penalty term $\frac{1}{\epsilon}(u \cdot n - g, v \cdot n)_\Gamma$ in the weak form. Our scheme transfers this procedure to the discrete setting given on Ω_h ; see (3.1) below. Since the test function space for velocity is taken as the whole V_h involving no constraints, this scheme facilitates implementation, which serves purpose 2) mentioned above. It is indeed simple enough to be implemented by well-known finite element libraries such as **FreeFem++** [15] and **FEniCS** [23], as is presented in our numerical examples.

Let us turn our attention to the error analysis. The first error estimate was given by Verfürth [31] who derived $O(h^{1/2})$ in the energy norm for $g = \tau = 0$. The same author proposed the Lagrange multiplier approach in [32, 33] for $\tau = 0$. Later, Knobloch [18] derived optimal error estimates (namely, $O(h)$ for linear-type approximation and $O(h^{3/2})$ for quadratic-type approximation) for $g = 0$ and for various combinations of finite elements satisfying the LBB condition, assuming the existence of better approximation of n than n_h . The convergence (without rate) under minimal regularity assumptions was proved by the same author in [19]. A different proof of $O(h^{3/2})$ -estimate for the P2/P1 element was given by [1] for $g = \tau = 0$, assuming that $n \circ G_h$ is known. The technique using G_h was then exploited to study the penalty scheme in [10], again for the P2/P1 element and for $g = \tau = 0$.

In the present paper, we study the penalty scheme for the P1/P1 element combined with pressure stabilization and also for the P1b/P1 element. Our method to establish the error estimate is quite different from those of the preceding works mentioned above. First, we address the non-homogeneous boundary conditions (1.1)₃–(1.1)₄ which were not considered previously. Second, concerning the penalty

scheme, we directly compare (u, p) and (u_h, p_h) , whereas Dione and Urquiza [10] introduced a penalized problem in the continuous setting, dividing the error estimates into two stages.

Third, we define our error (for velocity) to be $\|\tilde{u} - u_h\|_{H^1(\Omega_h)}$, where \tilde{u} may be arbitrary smooth extension of u . This differs from [32] and [1, 10] in which the errors were defined as $\|u - u_h\|_{H^1(\Omega \cap \Omega_h)}$ and $\|u - u_h \circ G_h\|_{H^1(\Omega)}$, respectively. In view of practical computation, our choice of the error fits what is usually done in the numerical verification of convergence when $\Omega_h \neq \Omega$. Compared with the method of Knobloch [18] who also employed $\|\tilde{u} - u_h\|_{H^1(\Omega_h)}$ as the error, the difference lies in the way the boundary element face S on Γ_h is mapped to a part of Γ . In fact, he exploited the orthogonal projection from Γ to Γ_h , the image of which is localized to each S . Then he needed delicate arguments (see [18, pp. 142–143]) to take into account the fact that it is not globally injective when $N = 3$ (this point seems to be overlooked in [32, p. 709]). We, to the contrary, rely on the orthogonal projection π from Γ_h to Γ , which is globally bijective regardless of the space dimension N , provided the mesh size h is sufficiently small. This enables us to transfer the triangulation of Γ_h to that on Γ in a natural way, which is convenient to estimate surface integrals. Complete proofs of the facts regarding π used in this paper, which we could not find in the literature, are provided in Appendices A and B.

Finally, we comment on the rate of convergence $O(h^{1/2})$ we obtain in our main result (Theorem 4.1) which is not optimal. In our opinion, all the error estimates reported in the preceding works, which use n_h to approximate n , remain $O(h^{1/2})$. Verfürth [32, Theorem 5.1] claimed $O(h)$; however, the estimate

$$\left| \int_{\Gamma_h} u \cdot (n_h - n \circ \pi^{-1}) \sigma_h \right| \leq Ch \|u\|_{H^{1/2}(\Gamma_h)} \|\sigma_h\|_{H^{-1/2}(\Gamma_h)},$$

which was used to derive equation (5.12) there, seems non-trivial because n_h is not smooth enough globally on Γ_h (e.g. it does not belong to $H^{1/2}(\Gamma_h)$). If $\|\sigma_h\|_{H^{-1/2}(\Gamma_h)}$ on the right-hand side is replaced by $\|\sigma_h\|_{L^2(\Gamma_h)}$, then one ends up with $O(h^{1/2})$ in the final estimate. Dione and Urquiza [10, Theorem 4] claimed $O(h^{2/3})$; however, in equation (4.13) there, they did not consider the contribution

$$\frac{1}{\sqrt{\epsilon}} \|(u_\epsilon - \bar{v}_h) \cdot n\|_{L^2(\Gamma)},$$

which should appear inside the infimum over $v_h \in K_h$ even when $\Omega_h = \Omega$ (see Proposition 4.2 of Layton [21]). If this contribution is taken into account, one obtains $O(h^{1/2})$ for the final result.

To overcome the sub-optimality, in Section 5 we investigate the penalty scheme in which reduced-order numerical integration is applied to the penalty term. This method was proposed in [9] and was shown to be efficient by numerical experiments for $N = 2$. We give a rigorous justification for this observation in the sense that the error estimate improves to $O(h)$ if $\epsilon = O(h^2)$. Our numerical example shows that the reduced-order numerical integration gives better results also for $N = 3$, although this is not proved rigorously.

In our numerical results presented in Section 6, we not only provide numerical verification of convergence but also discuss how the penalty parameter ϵ affects the performance of linear solvers. We find that too small ϵ can lead to non-convergence of iterative methods such as GMRES, whereas sparse direct solvers such as UMFPACK always manage to solve the linear system.

2. FORMULATION OF THE STOKES PROBLEM WITH SLIP BOUNDARY CONDITION

We present our notation for the function spaces and bilinear forms that we employ in this paper. The boundary Γ of Ω is supposed to be at least $C^{1,1}$ -smooth. The standard Lebesgue and Sobolev(-Slobodetskii) spaces are denoted by $L^p(\Omega)$ and $W^{s,p}(\Omega)$ respectively, for $p \in [1, \infty]$ and $s \geq 0$. When $p = 2$, we let $H^s(\Omega) := W^{s,2}(\Omega)$. Their vectorial versions are indicated as $L^p(\Omega)^N$ and $W^{m,p}(\Omega)^N$ etc.; however, in case they appear as subscripts, say $\|\cdot\|_{L^p(\Omega)^N}$, we write $\|\cdot\|_{L^p(\Omega)}$ for the sake of simplicity. The spaces above may also be defined for Γ ; see e.g. [24].

We define function spaces to describe velocity and pressure as follows:

$$V = H^1(\Omega)^N, \quad Q = L^2(\Omega).$$

Also we set

$$V_n := \{v \in H^1(\Omega)^N : (\text{Tr } v) \cdot n = 0 \text{ on } \Gamma\},$$

$$\mathring{Q} := L_0^2(\Omega) = \{q \in L^2(\Omega) : \int_{\Omega} q \, dx = 0\},$$

where Tr stands for the trace operator; for simplicity, $\text{Tr } v$ is indicated as v in the following. Finally, to describe a quantity which corresponds to the normal component of the traction vector, i.e. $\sigma(u, p)n \cdot n$, we introduce

$$(2.1) \quad \Lambda := H^{-1/2}(\Gamma) = H^{1/2}(\Gamma)',$$

where the prime means the dual space.

Let $G \subset \mathbb{R}^N$ be an open set. The $L^2(G)$ - and $L^2(\partial G)$ -inner products are denoted by $(\cdot, \cdot)_G$ and $(\cdot, \cdot)_{\partial G}$, respectively. Moreover, we define bilinear forms $a_G, b_G, c_{\partial G}$, for $u, v \in H^1(G)^N, q \in L^2(G), \lambda, \mu \in L^2(\partial G)$, by

$$(2.2) \quad a_G(u, v) = \int_G u \cdot v \, dx + \frac{\nu}{2} \int_G (\nabla u + (\nabla u)^T) : (\nabla v + (\nabla v)^T) \, dx,$$

$$(2.3) \quad b_G(v, q) = - \int_G \text{div } v \, q \, dx,$$

$$(2.4) \quad c_{\partial G}(\lambda, \mu) = \int_{\partial G} \lambda \mu \, d\gamma,$$

where the dot and colon mean the inner products for vectors and matrices, respectively. When $G = \Omega$, we use the abbreviation $a = a_{\Omega}, b = b_{\Omega}, c = c_{\partial \Omega}$. In the following, $c(\cdot, \cdot)$ is also interpreted as the duality pairing between $H^{1/2}(\Gamma)$ and $H^{-1/2}(\Gamma)$.

The variational formulation for (1.1) consists in finding $(u, p) \in V \times \mathring{Q}$ such that $u \cdot n = g$ on Γ and

$$(2.5) \quad \begin{cases} a(u, v) + b(v, p) = (f, v)_{\Omega} + (\tau, v)_{\Gamma} & \forall v \in V_n, \\ b(u, q) = 0 & \forall q \in \mathring{Q}. \end{cases}$$

It is well known that this variational equation admits a unique solution under the compatibility condition (1.2) and that it becomes regular according to the smoothness of Γ, f, g, τ ; see [3, 26]. Throughout this paper, we assume $\Gamma \in C^{2,1}, f \in L^2(\Omega)^N, g \in H^{3/2}(\Gamma), \tau \in H^{1/2}(\Gamma)^N$, so that the regularity $(u, p) \in H^2(\Omega)^N \times H^1(\Omega)$ is assured.

Letting $\lambda := -\sigma(u, p)n \cdot n$, we see that $(u, p, \lambda) \in V \times Q \times \Lambda$ satisfies

$$(2.6) \quad \begin{cases} a(u, v) + b(v, p) + c(v \cdot n, \lambda) = (f, v)_{\Omega} + (\tau, v)_{\Gamma} & \forall v \in V, \\ b(u, q) = 0 & \forall q \in Q, \\ c(u \cdot n - g, \mu) = 0 & \forall \mu \in \Lambda. \end{cases}$$

In fact, (2.6)₁ follows from Green's formula. By (1.2) one has $b(u, 1) = 0$, which implies (2.6)₂. Multiplying $u \cdot n = g$ by a test function μ and integrating over Γ lead to (2.6)₃.

Remark 2.1. Observe that $(u, p+k, \lambda+k)$ with any $k \in \mathbb{R}$ is also a solution of (2.6). According to this fact, we will adjust the additive constant of p (and thus of λ) later on, before we start error analysis of the finite element approximation (see Remark 4.1 below).

3. FINITE ELEMENT APPROXIMATION

3.1. Triangulation and FE spaces. Let us introduce a regular family of triangulations \mathcal{T}_h of a polyhedral domain Ω_h , which is assigned the *mesh size* $h > 0$. Namely, we assume that:

- (H1) each $T \in \mathcal{T}_h$ is a closed N -simplex such that $h_T := \text{diam } T \leq h$;
- (H2) $\Omega_h = \bigcup_{T \in \mathcal{T}_h} T$;
- (H3) the intersection of any two distinct elements is empty or consists of their common face of dimension $\leq N-1$;
- (H4) there exists a constant $C > 0$, independent of h , such that $\rho_T \leq Ch_T$ for all $T \in \mathcal{T}_h$ where ρ_T denotes the diameter of the inscribed ball of T .

We define the *boundary mesh* \mathcal{S}_h inherited from \mathcal{T}_h by

$$\mathcal{S}_h = \{S \in \mathcal{S}_h : S \text{ is an } (N-1)\text{-face of some } T \in \mathcal{T}_h\}.$$

Then we see that \mathcal{S}_h satisfies the requirements that are analogous to (H1)–(H4) above, and especially we have $\Gamma_h := \partial\Omega_h = \bigcup_{S \in \mathcal{S}_h} S$. We assume that Γ_h approximates Γ in the following sense:

(H5) the vertices of every $S \in \mathcal{S}_h$ lie on Γ .

Throughout this paper, we confine ourselves to the case where $h > 0$ is sufficiently small, which will not be emphasized in the following. In particular, all the results given in Appendices A and B are supposed to hold true.

As mentioned in Section 1, we focus on the P1/P1 and P1b/P1 finite element approximations for velocity and pressure, to which we refer as $l = 1$ and $l = 1b$, respectively. Namely, we define

$$\begin{aligned} V_h &= \begin{cases} \{v_h \in C(\overline{\Omega}_h)^N : v_h|_T \in P_1(T)^N \quad \forall T \in \mathcal{T}_h\} & \text{if } l = 1, \\ \{v_h \in C(\overline{\Omega}_h)^N : v_h|_T \in P_1(T)^N \oplus B(T)^N \quad \forall T \in \mathcal{T}_h\} & \text{if } l = 1b, \end{cases} \\ Q_h &= \{q_h \in C(\overline{\Omega}_h) : q_h|_T \in P_1(T) \quad \forall T \in \mathcal{T}_h\}, \end{aligned}$$

where $B(T)$ stands for the space spanned by the bubble function on T . We also set $\mathring{V}_h := V_h \cap H_0^1(\Omega_h)^N$ and $\mathring{Q}_h := Q_h \cap L_0^2(\Omega_h)$. We consider a discrete version of the space Λ (recall (2.1)) as

$$\Lambda_h = \{\lambda_h \in L^2(\Gamma_h) : \lambda_h|_S \in P_1(S) \quad \forall S \in \mathcal{S}_h\},$$

which is a discontinuous P_1 finite element space on Γ_h .

We turn our attention to interpolation operators. In order to deal with the situation $\Omega \neq \Omega_h$, we first extend functions defined in Ω to $\tilde{\Omega}$, which is a fixed bounded smooth domain containing $\overline{\Omega \cup \Omega_h}$. For this purpose we consider an arbitrary extension operator $P : W^{m,p}(\Omega) \rightarrow W^{m,p}(\tilde{\Omega})$ satisfying the stability condition

$$\|Pf\|_{W^{m,p}(\tilde{\Omega})} \leq C\|f\|_{W^{m,p}(\Omega)} \quad \forall f \in W^{m,p}(\Omega),$$

where C is a constant depending only on N, Ω, m, p . Such P does exist; for example, if $m = 0$ we may exploit the zero-extension as P , and if $m \geq 1$ it can be constructed e.g. by Nikolskii's method (see [24]). In view of the lift theorem which concerns a right inverse of the trace operator, we may also extend functions given on Γ to those in $\tilde{\Omega}$. We agree to use the same symbol P to refer to this extension as well. Then, given a function f in Ω or on Γ , we denote Pf by \tilde{f} for simplicity in the notation.

Now we let I_h and R_h represent the Lagrange interpolation operator to linear FE spaces and a local regularization operator to linear FE spaces, respectively. Then, from the theory of interpolation error estimates (see [4, Section 4]) combined with the stability of extension operators, we have

$$\begin{aligned} \|\tilde{f} - I_h \tilde{f}\|_{H^m(\Omega_h)} &\leq Ch^{2-m}\|f\|_{H^2(\Omega)}, & f \in H^2(\Omega), m = 0, 1, \\ \|\tilde{f} - R_h \tilde{f}\|_{H^m(\Omega_h)} &\leq Ch^{1-m}\|f\|_{H^1(\Omega)}, & f \in H^1(\Omega), m = 0, 1, \end{aligned}$$

where the constants C depend only on N , on the constant in assumption (H4) above, and on a reference element. For $L^2(\Gamma_h)$ -estimates, we first apply a trace inequality on each boundary element and then add them up to obtain

$$\begin{aligned} \|\tilde{f} - I_h \tilde{f}\|_{L^2(\Gamma_h)} &\leq C\|\tilde{f} - I_h \tilde{f}\|_{L^2(\Omega_h)}^{1/2} \|\tilde{f} - I_h \tilde{f}\|_{H^1(\Omega_h)}^{1/2} \\ &\leq Ch^{3/2}\|\tilde{f}\|_{H^2(\tilde{\Omega})} \leq Ch^{3/2}\|f\|_{H^{3/2}(\Gamma)} & f \in H^{3/2}(\Gamma), \\ \|\tilde{f} - R_h \tilde{f}\|_{L^2(\Gamma_h)} &\leq Ch^{1/2}\|f\|_{H^{1/2}(\Gamma)} & f \in H^{1/2}(\Gamma). \end{aligned}$$

3.2. FE scheme with penalty. We propose the following discrete problem to approximate (1.1): choose $\epsilon > 0$ suitably small and find $(u_h, p_h) \in V_h \times Q_h$ such that, for all $(v_h, q_h) \in V_h \times Q_h$,

$$(3.1) \quad \begin{cases} a_h(u_h, v_h) + b_h(v_h, p_h) + \frac{1}{\epsilon} c_h(u_h \cdot n_h - I_h \tilde{g}, v_h \cdot n_h) = (\tilde{f}, v_h)_{\Omega_h} + (\tilde{\tau}, v_h)_{\Gamma_h}, \\ b_h(u_h, q_h) = d_h(p_h, q_h), \end{cases}$$

where n_h is the outer unit normal of Γ_h , and $a_h := a_{\Omega_h}$, $b_h := b_{\Omega_h}$, $c_h := c_{\Gamma_h}$ (recall (2.2)–(2.4) above). Moreover, \tilde{f} , \tilde{g} , $\tilde{\tau}$ represent the extensions of f , g , τ respectively, which are discussed in the previous subsection. $d_h(\cdot, \cdot)$ is a pressure-stabilizing term, which is present only when $l = 1$ and is defined by

$$d_h(p_h, q_h) = \eta h^2 (\nabla p_h, \nabla q_h)_{\Omega_h}, \quad \eta := \begin{cases} 1 & \text{if } l = 1, \\ 0 & \text{if } l = 1b. \end{cases}$$

We remark that η for the case $l = 1$ can be any positive constant; here, we suppose it to be 1 for simplicity. We state the well-posedness of this discrete problem.

Proposition 3.1. *There exists a unique solution $(u_h, p_h) \in V_h \times Q_h$ of (3.1).*

The proof relies on the following discrete versions of Korn's inequality and the inf-sup condition:

$$(3.2) \quad \alpha \|v_h\|_{H^1(\Omega_h)}^2 \leq a_h(v_h, v_h) \quad \forall v_h \in V_h,$$

$$(3.3) \quad C \|q_h\|_{L^2(\Omega_h)} \leq \sup_{v_h \in \mathring{V}_h} \frac{b(v_h, q_h)}{\|v_h\|_{H^1(\Omega_h)}} + C \eta h \|\nabla q_h\|_{L^2(\Omega_h)} \quad \forall q_h \in \mathring{Q}_h,$$

where $\alpha > 0$ depends only on N, Ω, ν and $C > 0$ depends only on N, Ω . Proofs of these uniform coercivity estimates are found in [18, Theorem 4.3] and in [28, Proposition 4], respectively. They will be of central importance when we perform error analysis in Section 4. Now we prove the proposition.

Proof of Proposition 3.1. We notice that (3.1) is equivalently rewritten as follows: find $(u_h, p_h) \in V_h \times Q_h$ such that, for all $(v_h, q_h) \in V_h \times Q_h$,

$$(3.4) \quad \begin{aligned} B_h(u_h, p_h; v_h, q_h) &:= a_h(u_h, v_h) + b_h(v_h, p_h) - b_h(u_h, q_h) + d_h(p_h, q_h) + \frac{1}{\epsilon} c_h(u_h \cdot n_h, v_h \cdot n_h) \\ &= (\tilde{f}, v_h)_{\Omega_h} + (\tilde{\tau}, v_h)_{\Gamma_h} + \frac{1}{\epsilon} c_h(I_h \tilde{g}, v_h \cdot n_h). \end{aligned}$$

Because the problem is finite dimensional, it suffices to prove that $B_h(u_h, p_h; v_h, q_h) = 0$ for all v_h and q_h implies $u_h = p_h = 0$. Taking $(v_h, q_h) = (u_h, p_h)$ yields, thanks to (3.2), $u_h = 0$ and $d_h(p_h, p_h) = 0$. Below we deal with $l = 1$ and $l = 1b$ separately.

Let $l = 1$. Then, since $\eta > 0$ we have $\nabla p_h = 0$, which implies that p_h equals some constant k . By (3.4) one has $b_h(v_h, k) = -k \int_{\Gamma_h} v_h \cdot n_h d\gamma_h = 0$ for all $v_h \in V_h$. Choosing $v_h \in V_h$ such that $\int_{\Gamma_h} v_h \cdot n_h d\gamma_h \neq 0$ gives $k = 0$, so that $p_h = 0$.

When $l = 1b$, (3.4) reduces to $b(v_h, q_h) = 0$ for all $v_h \in V_h$. This combined with (3.3) tells us that p_h is equal to a constant. Discussing as in $l = 1$, we conclude $p_h = 0$. This completes the proof of Proposition 3.1. \square

Let us rewrite (3.1) in such a way that the discrete problem becomes comparable with the continuous one given in (2.6). To this end, we introduce $\lambda_h := \frac{1}{\epsilon}(u_h \cdot n_h - I_h \tilde{g}) \in \Lambda_h$ to obtain

$$(3.5) \quad \begin{cases} a_h(u_h, v_h) + b_h(v_h, p_h) + c_h(v_h \cdot n_h, \lambda_h) = (\tilde{f}, v_h)_{\Omega_h} + (\tilde{\tau}, v_h)_{\Gamma_h} & \forall v_h \in V_h, \\ b_h(u_h, q_h) = d_h(p_h, q_h) & \forall q_h \in Q_h, \\ c_h(u_h \cdot n_h - I_h \tilde{g}, \mu_h) = \epsilon c_h(\lambda_h, \mu_h) & \forall \mu_h \in \Lambda_h. \end{cases}$$

In fact, (3.5)₁ results from the symmetry $c_h(\lambda_h, \mu_h) = c_h(\mu_h, \lambda_h)$, and (3.5)₃ follows from multiplying the equation $u_h \cdot n_h - I_h \tilde{g} = \epsilon \lambda_h$ by any test function in $L^2(\Gamma_h) \supset \Lambda_h$.

3.3. Auxiliary lemmas. We collect several results which will be useful to evaluate the difference of Ω and Ω_h in terms of volume or surface integrals. We denote the symmetric difference of Ω and Ω_h by

$$\Omega \triangle \Omega_h := (\Omega \setminus \Omega_h) \cup (\Omega_h \setminus \Omega)$$

and call it the *boundary skin*. The first lemma concerns a linear operator which extends functions in V_h to $\tilde{\Omega}$ is equipped with suitable stability properties. For the proof, we refer to [18, Theorem 4.1].

Lemma 3.1. *There exists a linear operator $P_h : V_h \rightarrow H^1(\tilde{\Omega})^N$ such that $P_h v_h|_{\tilde{\Omega}_h} = v_h$ and*

$$\begin{aligned} \|P_h v_h\|_{H^m(\tilde{\Omega})} &\leq C \|v_h\|_{H^m(\Omega_h)} & \forall v_h \in V_h, m = 0, 1, \\ \|P_h v_h\|_{H^m(\Omega \triangle \Omega_h)} &\leq Ch^{1/2} \|v_h\|_{H^m(\Omega_h)} & \forall v_h \in V_h, m = 0, 1, \end{aligned}$$

where the constants C are independent of h .

The second lemma gives estimates of volume integrals over the boundary skin, which are not restricted to discrete spaces. However, notice that we require higher regularity for the right-hand side.

Lemma 3.2. *Let $f \in H^{m+1}(\tilde{\Omega})$, $m = 0, 1$. Then we have*

$$\|f\|_{H^m(\Omega \triangle \Omega_h)} \leq Ch \|f\|_{H^{m+1}(\tilde{\Omega})},$$

where C is independent of h .

Proof. Since $\Omega \triangle \Omega_h \subset \Gamma(\tilde{C}_{0E} h^2)$ by Proposition A.2, Theorem A.3 for $\delta_1 = \tilde{C}_{0E} h^2$ and for $p = 2$, combined with the trace inequality $\|f\|_{L^2(\Gamma)} \leq C \|f\|_{H^1(\Omega)}$, leads to the desired result. \square

The last lemma restates results concerning surface integrals obtained in Theorems A.1 and A.2.

Lemma 3.3. *Let π be the orthogonal projection to Γ defined in a tubular neighborhood of Γ . Then we have the following estimates:*

$$\begin{aligned} \|f \circ \pi\|_{L^2(\Gamma_h)} &\leq C \|f\|_{L^2(\Gamma)} & \forall f \in L^2(\Gamma), \\ \left| \int_{\Gamma} f d\gamma - \int_{\Gamma_h} f \circ \pi d\gamma_h \right| &\leq Ch^2 \|f\|_{L^1(\Gamma)} & \forall f \in L^1(\Gamma), \\ \|f - f \circ \pi\|_{L^2(\Gamma_h)} &\leq Ch \|f\|_{H^1(\tilde{\Omega})} & \forall f \in H^1(\tilde{\Omega}), \end{aligned}$$

where the constants C are independent of h . Here, $d\gamma$ and $d\gamma_h$ denote the surface elements associated with Γ and Γ_h , respectively.

Remark 3.1. By the first and third estimates together with trace inequalities, for all $f \in H^{1/2}(\Gamma)$ (hence its extension \tilde{f} is in $H^1(\tilde{\Omega})$) we obtain

$$\|\tilde{f}\|_{L^2(\Gamma_h)} \leq \|\tilde{f} - f \circ \pi\|_{L^2(\Gamma_h)} + \|f \circ \pi\|_{L^2(\Gamma_h)} \leq C \|\tilde{f}\|_{H^1(\tilde{\Omega})} \leq C \|f\|_{H^{1/2}(\Gamma)}.$$

4. ERROR ANALYSIS OF PENALTY FE SCHEME

4.1. Estimation of consistency error. To explain the idea, suppose that $\Omega = \Omega_h$ and that $g = 0$. Then subtracting the discrete problem (3.5) from the continuous one (2.6) would give us

$$(4.1) \quad \begin{cases} a(u - u_h, v_h) + b(v_h, p - p_h) + c(v_h \cdot n, \lambda - \lambda_h) = 0 & \forall v_h \in V_h, \\ b(u - u_h, q_h) = -d_h(p_h, q_h) & \forall q_h \in Q_h, \\ c((u - u_h) \cdot n, \mu_h) = -\epsilon c(\lambda_h, \mu_h) & \forall \mu_h \in \Lambda_h. \end{cases}$$

This type of relation is essentially important in error analysis of the finite element method and is sometimes called the ‘‘Galerkin orthogonality’’. If $\Omega \neq \Omega_h$, then such a relation is by no means available because subtraction is impossible. However, even in this case one can still expect that an asymptotic version of (4.1) should hold as h becomes small. The next proposition verifies this expectation.

Proposition 4.1. *Let (u, p, λ) and (u_h, p_h, λ_h) be solutions of (2.6) and (3.5) respectively. We assume the regularity of the data: $\Gamma \in C^{2,1}$, $f \in L^2(\Omega)^N$, $g \in H^{3/2}(\Gamma)$, $\tau \in H^{1/2}(\Gamma)^N$. Then there exist constants $C = C(N, \Omega, \nu, f, g, \tau)$, independent of h and ϵ , such that for all $(v_h, q_h, \mu_h) \in V_h \times Q_h \times \Lambda_h$ there holds*

$$(4.2) \quad \begin{cases} |a_h(\tilde{u} - u_h, v_h) + b_h(v_h, \tilde{p} - p_h) + c_h(v_h \cdot n, \tilde{\lambda} - \lambda_h)| \leq Ch \|v_h\|_{H^1(\Omega_h)}, \\ |b_h(\tilde{u} - u_h, q_h) + d_h(p_h, q_h)| \leq Ch \|q_h\|_{L^2(\Omega_h)}, \\ |c_h((\tilde{u} - u_h) \cdot n_h, \mu_h) + \epsilon c_h(\lambda_h, \mu_h)| \leq Ch \|\mu_h\|_{L^2(\Gamma_h)}. \end{cases}$$

Proof. (i) Let us prove (4.2)₁. Since $\int_{\Omega_h} = \int_{\Omega} + \int_{\Omega_h \setminus \Omega} - \int_{\Omega \setminus \Omega_h}$, we obtain

$$\begin{aligned} a_h(\tilde{u} - u_h, v_h) &= a(u, P_h v_h) - a_h(u_h, v_h) + a_{\Omega_h \setminus \Omega}(\tilde{u}, v_h) - a_{\Omega \setminus \Omega_h}(u, P_h v_h), \\ b_h(v_h, \tilde{p} - p_h) &= b(P_h v_h, \tilde{p}) - b_h(v_h, p_h) + b_{\Omega_h \setminus \Omega}(v_h, \tilde{p}) - b_{\Omega \setminus \Omega_h}(P_h v_h, p). \end{aligned}$$

On the other hand, it is clear that

$$c_h(v_h \cdot n_h, \tilde{\lambda} - \lambda_h) = c(P_h v_h \cdot n, \tilde{\lambda}) - c_h(v_h \cdot n_h, \lambda_h) + c_h(v_h \cdot n_h, \tilde{\lambda}) - c(P_h v_h \cdot n, \lambda).$$

Addition of the three equations above combined with (2.6)₁ and (3.5)₁ yields

$$\begin{aligned} & a_h(\tilde{u} - u_h, v_h) + b_h(v_h, \tilde{p} - p_h) + c_h(v_h \cdot n, \tilde{\lambda} - \lambda_h) \\ &= (f, P_h v_h)_{\Omega} - (\tilde{f}, v_h)_{\Omega_h} + (\tau, P_h v_h)_{\Gamma} - (\tilde{\tau}, v_h)_{\Gamma_h} \\ & \quad + a_{\Omega_h \setminus \Omega}(\tilde{u}, v_h) - a_{\Omega \setminus \Omega_h}(u, P_h v_h) + b_{\Omega_h \setminus \Omega}(v_h, \tilde{p}) - b_{\Omega \setminus \Omega_h}(P_h v_h, p) \\ & \quad + c_h(v_h \cdot n_h, \tilde{\lambda}) - c(P_h v_h \cdot n, \lambda) \\ (4.3) \quad &=: I_1 + I_2 + I_3 + I_4 + I_5. \end{aligned}$$

First we estimate volume integrals. It follows from Lemmas 3.1 and 3.2 together with the stability of the extensions that

$$\begin{aligned} |I_1| &\leq \|\tilde{f}\|_{L^2(\Omega \triangle \Omega_h)} \|P_h v_h\|_{L^2(\Omega \triangle \Omega_h)} \leq Ch \|f\|_{L^2(\Omega)} \|v_h\|_{H^1(\Omega_h)}, \\ |I_3| &\leq C \|\tilde{u}\|_{H^1(\Omega \triangle \Omega_h)} \|P_h v_h\|_{H^1(\Omega \triangle \Omega_h)} \leq Ch^{7/6} \|u\|_{H^2(\Omega)} \|v_h\|_{H^1(\Omega_h)}, \\ |I_4| &\leq C \|P_h v_h\|_{H^1(\Omega \triangle \Omega_h)} \|\tilde{p}\|_{L^2(\Omega \triangle \Omega_h)} \leq Ch^{7/6} \|p\|_{H^1(\Omega)} \|v_h\|_{H^1(\Omega_h)}. \end{aligned}$$

Next we estimate surface integrals. For I_2 we observe that

$$\begin{aligned} I_2 &= \int_{\Gamma} \tau \cdot P_h v_h \, d\gamma - \int_{\Gamma_h} (\tau \cdot P_h v_h) \circ \pi \, d\gamma_h + (\tau \circ \pi - \tilde{\tau}, (P_h v_h) \circ \pi)_{\Gamma_h} \\ & \quad + (\tilde{\tau}, (P_h v_h) \circ \pi - P_h v_h)_{\Gamma_h} \\ &=: I_{21} + I_{22} + I_{23}. \end{aligned}$$

It follows from Lemma 3.3, Remark 3.1, and Lemma 3.1 that

$$\begin{aligned} |I_{21}| &\leq Ch^2 \|\tau \cdot P_h v_h\|_{L^1(\Gamma)} \leq Ch^2 \|\tau\|_{L^2(\Gamma)} \|v_h\|_{H^1(\Omega_h)}, \\ |I_{22}| &\leq Ch \|\tilde{\tau}\|_{H^1(\tilde{\Omega})} \|P_h v_h\|_{H^1(\tilde{\Omega})} \leq Ch \|\tau\|_{H^{1/2}(\Gamma)} \|v_h\|_{H^1(\Omega_h)}, \\ |I_{23}| &\leq \|\tilde{\tau}\|_{L^2(\Gamma_h)} \cdot Ch \|P_h v_h\|_{H^1(\tilde{\Omega})} \leq Ch \|\tau\|_{H^{1/2}(\Gamma)} \|v_h\|_{H^1(\Omega_h)}. \end{aligned}$$

For I_5 we observe that

$$\begin{aligned} I_5 &= c_h(v_h \cdot (n_h - n \circ \pi), \tilde{\lambda}) + c_h((v_h - P_h v_h) \cdot (n \circ \pi), \tilde{\lambda}) \\ & \quad + c_h((P_h v_h \cdot n) \circ \pi, \tilde{\lambda} - \lambda \circ \pi) \\ & \quad + \int_{\Gamma_h} (P_h v_h \cdot n \lambda) \circ \pi \, d\gamma_h - \int_{\Gamma} P_h v_h \cdot n \lambda \, d\gamma =: I_{51} + I_{52} + I_{53} + I_{54}. \end{aligned}$$

It follows from Lemmas B.1, 3.3, and 3.1 that

$$\begin{aligned} |I_{51}| &\leq Ch \|v_h\|_{L^2(\Gamma_h)} \|\tilde{\lambda}\|_{L^2(\Gamma_h)} \leq Ch (\|u\|_{H^2(\Omega)} + \|p\|_{H^1(\Omega)}) \|v_h\|_{H^1(\Omega_h)}, \\ |I_{52}| &\leq \|P_h v_h - (P_h v_h) \circ \pi\|_{L^2(\Gamma_h)} \|\tilde{\lambda}\|_{L^2(\Gamma_h)} \leq Ch \|P_h v_h\|_{H^1(\tilde{\Omega})} \|\tilde{\lambda}\|_{L^2(\Gamma_h)} \\ &\leq Ch (\|u\|_{H^2(\Omega)} + \|p\|_{H^1(\Omega)}) \|v_h\|_{H^1(\Omega_h)}, \\ |I_{53}| &\leq \|(P_h v_h \cdot n) \circ \pi\|_{L^2(\Gamma_h)} \|\tilde{\lambda} - \lambda \circ \pi\|_{L^2(\Gamma_h)} \leq C \|P_h v_h\|_{L^2(\Gamma)} \cdot Ch \|\tilde{\lambda}\|_{H^1(\tilde{\Omega})} \\ &\leq Ch (\|u\|_{H^2(\Omega)} + \|p\|_{H^1(\Omega)}) \|v_h\|_{H^1(\Omega_h)}, \\ |I_{54}| &\leq Ch^2 \|P_h v_h \cdot n \lambda\|_{L^1(\Gamma)} \leq Ch^2 \|P_h v_h\|_{L^2(\Gamma)} \|\lambda\|_{L^2(\Gamma)} \\ &\leq Ch^2 (\|u\|_{H^2(\Omega)} + \|p\|_{H^1(\Omega)}) \|v_h\|_{H^1(\Omega_h)}. \end{aligned}$$

Combining the above estimates with (4.3) and noting that $\|u\|_{H^2(\Omega)} + \|p\|_{H^1(\Omega)} \leq C(\|f\|_{L^2(\Omega)} + \|g\|_{H^{3/2}(\Gamma)} + \|\tau\|_{H^{1/2}(\Gamma)})$ by the regularity theory of the Stokes equations, we conclude (4.2)₁.

(ii) Let us prove (4.2)₂. One finds from (2.6)₂ and (3.5)₂ that

$$b_h(\tilde{u} - u_h, q_h) + d_h(p_h, q_h) = b_h(\tilde{u}, q_h) - b(u, P_h q_h) =: I_6.$$

By Lemmas 3.1 and 3.2 we have

$$|I_6| \leq C\|\tilde{u}\|_{H^1(\Omega \triangle \Omega_h)}\|P_h q_h\|_{L^2(\Omega \triangle \Omega_h)} \leq Ch^{7/6}\|u\|_{H^2(\Omega)}\|q_h\|_{L^2(\Omega_h)},$$

from which (4.2)₂ follows.

(iii) Let us prove (4.2)₃. One finds from (2.6)₃ and $u \cdot n = g$ on Γ , which is due to (3.5)₃, that

$$\begin{aligned} & c_h((\tilde{u} - u_h) \cdot n_h, \mu_h) + \epsilon c_h(\lambda_h, \mu_h) = c_h(\tilde{u} \cdot n_h - I_h \tilde{g}, \mu_h) \\ & = c_h(\tilde{u} \cdot (n_h - n \circ \pi), \mu_h) + c_h((\tilde{u} - u \circ \pi) \cdot n \circ \pi, \mu_h) + c_h(g \circ \pi - \tilde{g}, \mu_h) \\ & \quad + c_h(\tilde{g} - I_h \tilde{g}, \mu_h) \\ & =: I_7 + I_8 + I_9 + I_{10}. \end{aligned}$$

By Lemmas B.1, 3.3, and 3.1, together with the interpolation error estimate, we have

$$\begin{aligned} |I_7| & \leq Ch\|\tilde{u}\|_{L^2(\Gamma_h)}\|\mu_h\|_{L^2(\Gamma_h)} \leq Ch\|u\|_{H^1(\Omega)}\|\mu_h\|_{L^2(\Gamma_h)}, \\ |I_8| & \leq \|\tilde{u} - u \circ \pi\|_{L^2(\Gamma_h)}\|\mu_h\|_{L^2(\Gamma_h)} \leq Ch\|u\|_{H^1(\Omega)}\|\mu_h\|_{L^2(\Gamma_h)}, \\ |I_9| & \leq Ch\|\tilde{g}\|_{H^1(\tilde{\Omega})}\|\mu_h\|_{L^2(\Gamma_h)} \leq Ch\|g\|_{H^{1/2}(\Gamma)}\|\mu_h\|_{L^2(\Gamma_h)}, \\ |I_{10}| & \leq Ch^{3/2}\|\tilde{g}\|_{H^2(\Omega_h)}\|\mu_h\|_{L^2(\Gamma_h)} \leq Ch^{3/2}\|g\|_{H^{3/2}(\Gamma)}\|\mu_h\|_{L^2(\Gamma_h)}, \end{aligned}$$

from which (4.2)₃ follows. This completes the proof of Proposition 4.1. \square

4.2. Error estimate for velocity and pressure. We are ready to state the main result of this paper.

Theorem 4.1. *Assume that $\Gamma \in C^{2,1}$, $f \in L^2(\Omega)^N$, $g \in H^{3/2}(\Gamma)$, $\tau \in H^{1/2}(\Gamma)^N$ and that $h > 0$ is sufficiently small. We let (u, p) and (u_h, p_h) be solutions of (2.5) and (3.1) respectively. Then there exists a constant $C = C(N, \Omega, \nu, f, g, \tau)$, independent of h and ϵ , such that*

$$\|\tilde{u} - u_h\|_{H^1(\Omega_h)} + \|(\tilde{p} + k_h) - p_h\|_{L^2(\Omega_h)} \leq C(\sqrt{h} + \sqrt{\epsilon} + \frac{h}{\sqrt{\epsilon}}),$$

where $k_h = \frac{1}{\text{meas}(\Omega_h)}(p_h - R_h \tilde{p}, 1)_{\Omega_h}$.

Remark 4.1. As mentioned in Remark 2.1, there is room for us to choose arbitrary additive constant k for p . Here, we adjust k in such a way that $R_h(\tilde{p} + k) - p_h \in L_0^2(\Omega_h)$, which gives rise to the constant k_h above. By considering $(p + k_h, \lambda + k_h)$ instead of (p, λ) , we may assume $k_h = 0$ in the following proof.

Proof of Theorem 4.1. Let $v_h := I_h \tilde{u}$, $q_h := R_h \tilde{p}$, $\mu_h := R_h \tilde{\lambda}$. By interpolation error estimates one has

$$\begin{aligned} \|\tilde{u} - u_h\|_{H^1(\Omega_h)} & \leq C\|u\|_{H^2(\Omega)}h + \|v_h - u_h\|_{H^1(\Omega_h)}, \\ \|\tilde{p} - p_h\|_{L^2(\Omega_h)} & \leq C\|p\|_{H^1(\Omega)}h + \|q_h - p_h\|_{L^2(\Omega_h)}, \end{aligned}$$

hence it suffices to bound $\|v_h - u_h\|_{H^1(\Omega_h)}$ and $\|q_h - p_h\|_{L^2(\Omega_h)}$ by $C(h^{1/2} + \epsilon^{1/2} + h/\epsilon^{1/2})$. According to the uniform ellipticity (3.2) we obtain

$$\begin{aligned} & \alpha\|v_h - u_h\|_{H^1(\Omega_h)}^2 + d_h(p_h - q_h, p_h - q_h) + \epsilon c_h(\lambda_h - \mu_h, \lambda_h - \mu_h) \\ & \leq a_h(v_h - u_h, v_h - u_h) + d_h(p_h - q_h, p_h - q_h) + \epsilon c_h(\lambda_h - \mu_h, \lambda_h - \mu_h) \\ & = a_h(v_h - \tilde{u}, v_h - u_h) \\ & \quad + a_h(\tilde{u} - u_h, v_h - u_h) + b_h(v_h - u_h, \tilde{p} - p_h) + c_h((v_h - u_h) \cdot n_h, \tilde{\lambda} - \lambda_h) \\ & \quad - b_h(v_h - u_h, \tilde{p} - p_h) + d_h(p_h - q_h, p_h - q_h) \\ & \quad - c_h((v_h - u_h) \cdot n_h, \tilde{\lambda} - \lambda_h) + \epsilon c_h(\lambda_h - \mu_h, \lambda_h - \mu_h) \\ (4.4) \quad & =: I_1 + I_2 + I_3 + I_4. \end{aligned}$$

From interpolation error estimates and Proposition 4.1 it follows that

$$(4.5) \quad |I_1| + |I_2| \leq \frac{\alpha}{8} \|v_h - u_h\|_{H^1(\Omega_h)}^2 + Ch^2.$$

For I_3 , we observe that

$$\begin{aligned} I_3 &= b_h(v_h - \tilde{u} + \tilde{u} - u_h, p_h - q_h + q_h - \tilde{p}) + d_h(p_h, p_h - q_h) - d_h(q_h, p_h - q_h) \\ &= b_h(v_h - \tilde{u}, q_h - \tilde{p}) + b_h(v_h - \tilde{u}, p_h - q_h) + b_h(\tilde{u} - u_h, q_h - \tilde{p}) \\ &\quad + b_h(\tilde{u} - u_h, p_h - q_h) + d_h(p_h, p_h - q_h) \\ &\quad - d_h(q_h, p_h - q_h) =: I_{31} + I_{32} + I_{33} + I_{34} + I_{35}. \end{aligned}$$

The first three terms are estimated as

$$|I_{31}| \leq Ch^2, \quad |I_{32}| \leq Ch \|p_h - q_h\|_{L^2(\Omega_h)}, \quad |I_{33}| \leq Ch^2 + \frac{\alpha}{8} \|v_h - u_h\|_{H^1(\Omega_h)}^2,$$

whereas we know that $|I_{34}| \leq Ch \|p_h - q_h\|_{L^2(\Omega_h)}$ by Proposition 4.1. I_{35} is bounded, thanks to Hölder's inequality, by

$$|I_{35}| \leq \eta h^2 \|\nabla q_h\|_{L^2(\Omega_h)}^2 + \frac{1}{4} d_h(p_h - q_h, p_h - q_h) \leq Ch^2 + \frac{1}{4} d_h(p_h - q_h, p_h - q_h).$$

To obtain further estimates of I_{32} and I_{34} , we observe from (3.3) that

$$\begin{aligned} C \|p_h - q_h\|_{L^2(\Omega_h)} &\leq \sup_{v_h \in \check{V}_h} \frac{b_h(v_h, p_h - q_h)}{\|v_h\|_{H^1(\Omega_h)}} + C \eta h \|\nabla(p_h - q_h)\|_{L^2(\Omega_h)} \\ &\leq \sup_{v_h \in \check{V}_h} \frac{b_h(v_h, p_h - \tilde{p})}{\|v_h\|_{H^1(\Omega_h)}} + \sup_{v_h \in \check{V}_h} \frac{b_h(v_h, \tilde{p} - q_h)}{\|v_h\|_{H^1(\Omega_h)}} + C \eta h \|\nabla(p_h - q_h)\|_{L^2(\Omega_h)}. \end{aligned}$$

Here, the second term on the right-hand side is bounded by $Ch \|p\|_{H^1(\Omega)} = Ch$. We claim that the first term is bounded by $Ch + C \|v_h - u_h\|_{H^1(\Omega_h)}$. In fact, it follows from (4.2)₁, in which v_h is restricted to \check{V}_h (hence $v_h = 0$ on Γ_h so that $c_h(v_h \cdot n_h, \cdot) = 0$), that

$$\sup_{v_h \in \check{V}_h} \frac{|a_h(\tilde{u} - u_h, v_h) + b_h(v_h, \tilde{p} - p_h)|}{\|v_h\|_{H^1(\Omega_h)}} \leq Ch.$$

This combined with $\sup_{v_h \in \check{V}_h} \frac{|a_h(\tilde{u} - u_h, v_h)|}{\|v_h\|_{H^1(\Omega_h)}} \leq C \|\tilde{u} - u_h\|_{H^1(\Omega_h)} \leq Ch + C \|v_h - u_h\|_{H^1(\Omega_h)}$ proves the claim.

Consequently, we have

$$(4.6) \quad C \|p_h - q_h\|_{L^2(\Omega_h)} \leq Ch + C \|v_h - u_h\|_{H^1(\Omega_h)} + C \eta h \|\nabla(p_h - q_h)\|_{L^2(\Omega_h)}.$$

Collecting the above estimates for I_{31}, \dots, I_{35} and noting that $\eta h^2 \|\nabla(p_h - q_h)\|_{L^2(\Omega_h)}^2 = d_h(p_h - q_h, p_h - q_h)$, we deduce

$$(4.7) \quad |I_3| \leq Ch^2 + \frac{\alpha}{4} \|v_h - u_h\|_{H^1(\Omega_h)}^2 + \frac{1}{2} d_h(p_h - q_h, p_h - q_h).$$

In the same way as we computed I_3 , one has

$$\begin{aligned} I_4 &= c_h((v_h - \tilde{u}) \cdot n_h, \mu_h - \tilde{\lambda}) + c_h((v_h - \tilde{u}) \cdot n_h, \lambda_h - \mu_h) \\ &\quad + c_h((\tilde{u} - u_h) \cdot n_h, \mu_h - \tilde{\lambda}) \\ &\quad + c_h((\tilde{u} - u_h) \cdot n_h, \lambda_h - \mu_h) + \epsilon c_h(\lambda_h, \lambda_h - \mu_h) \\ &\quad - \epsilon c_h(\mu_h, \lambda_h - \mu_h) =: I_{41} + I_{42} + I_{43} + I_{44} + I_{45}. \end{aligned}$$

By interpolation error estimates on Γ_h , we have

$$\begin{aligned} |I_{41}| &\leq Ch^2, \quad |I_{42}| \leq Ch^{3/2} \|\lambda_h - \mu_h\|_{L^2(\Gamma_h)}, \quad |I_{43}| \leq Ch^{1/2} \|\tilde{u} - u_h\|_{H^1(\Omega_h)}, \\ |I_{45}| &\leq C \epsilon \|\lambda_h - \mu_h\|_{L^2(\Gamma_h)}, \end{aligned}$$

whereas it follows from (4.2)₃ that

$$|I_{44}| \leq Ch \|\lambda_h - \mu_h\|_{L^2(\Gamma_h)}.$$

Noting that $\|\lambda_h - \mu_h\|_{L^2(\Gamma_h)}^2 = c_h(\lambda_h - \mu_h, \lambda_h - \mu_h)$ and using Young's inequality, we arrive at

$$\begin{aligned}
 |I_4| &\leq Ch^2 + Ch^3/\epsilon + Ch + C\epsilon + Ch^2/\epsilon \\
 &\quad + \frac{\alpha}{8}\|v_h - u_h\|_{H^1(\Omega_h)}^2 + \frac{\epsilon}{2}c_h(\lambda_h - \mu_h, \lambda_h - \mu_h) \\
 (4.8) \quad &\leq C(h + \epsilon + h^2/\epsilon) + \frac{\alpha}{8}\|v_h - u_h\|_{H^1(\Omega_h)}^2 + \frac{\epsilon}{2}c_h(\lambda_h - \mu_h, \lambda_h - \mu_h).
 \end{aligned}$$

Combining (4.5), (4.7), and (4.8) with (4.4), we conclude the desired estimate for $\|v_h - u_h\|_{H^1(\Omega_h)}$. The result for $\|q_h - p_h\|_{L^2(\Omega_h)}$ follows from (4.6). This completes the proof of Theorem 4.1. \square

Remark 4.2. According to the theorem, the best rate of convergence is $O(h^{1/2})$ obtained by choosing $\epsilon = O(h)$, which is not optimal. Let us highlight the reasons for this sub-optimality. First, as far as the variational principle is concerned, the most suitable regularity to work with for λ_h would be $H^{-1/2}(\Gamma_h)$, instead of $L^2(\Gamma_h)$ as presented above. However, it is not possible to extract this regularity from I_{44} above (more precisely, I_7 in the proof of Proposition 4.1) because $n_h \notin H^{1/2}(\Gamma_h)$. Second, it is not trivial whether the following inf-sup condition would hold:

$$(4.9) \quad C\|\mu_h\|_{H^{-1/2}(\Gamma_h)} \leq \sup_{v_h \in V_h} \frac{c_h(v_h \cdot n_h, \mu_h)}{\|v_h\|_{H^1(\Omega_h)}} \quad \forall \mu_h \in \Lambda_h.$$

In the case $\Omega_h = \Omega$, this condition is valid for a suitable choice of Λ_h . Çağlar and Liakos [6, 7] took advantage of this fact to derive the optimal rate of convergence $O(h + \epsilon)$.

5. PENALTY FE SCHEME WITH REDUCED-ORDER NUMERICAL INTEGRATION

In this section, we investigate problem (3.1) in which c_h is replaced with its reduced-order numerical integration c_h^1 defined via the midpoint (barycenter) formula as follows:

$$c_h^1(\lambda, \mu) := \sum_{S \in \mathcal{S}_h} |S| \lambda(m_S) \mu(m_S), \quad \lambda, \mu \in C(\Gamma_h),$$

where $|S|$ denotes the area of S and m_S is the midpoint of S when $N = 2$ (resp., the barycenter of S when $N = 3$). Because we exploit pointwise evaluation of functions, we assume higher regularity of the exact solutions as follows:

$$u \in W^{2,\infty}(\Omega)^N, \quad p \in W^{1,\infty}(\Omega), \quad \lambda \in W^{1,\infty}(\Gamma),$$

which implies $f \in L^\infty(\Omega)^N$, $g \in W^{2,\infty}(\Gamma)$, $\tau \in W^{1,\infty}(\Gamma)^N$.

Then the problem we propose reads: find $(u_h, p_h) \in V_h \times Q_h$ such that

$$(5.1) \quad \begin{cases} a_h(u_h, v_h) + b_h(v_h, p_h) + \frac{1}{\epsilon} c_h^1(u_h \cdot n_h - \tilde{g}, v_h \cdot n_h) = (\tilde{f}, v_h)_{\Omega_h} + (\tilde{\tau}, v_h)_{\Gamma_h} \\ b_h(u_h, q_h) = d_h(p_h, q_h) \end{cases}$$

for all $(v_h, q_h) \in V_h \times Q_h$. The well-posedness of this problem is obtained by the same manner as in Proposition 3.1. We also find that its solution satisfies the following three-variable formulation as we derived (3.5):

$$\begin{cases} a_h(u_h, v_h) + b_h(v_h, p_h) + c_h^1(v_h \cdot n_h, \lambda_h) = (\tilde{f}, v_h)_{\Omega_h} + (\tilde{\tau}, v_h)_{\Gamma_h} & \forall v_h \in V_h, \\ b_h(u_h, q_h) = d_h(p_h, q_h) & \forall q_h \in Q_h, \\ c_h^1(u_h \cdot n_h - \tilde{g}, \mu) = \epsilon c_h^1(\lambda_h, \mu) & \forall \mu \in C(\Gamma_h), \end{cases}$$

where λ_h is defined only on $\{m_S : S \in \mathcal{S}_h\}$ by $\lambda_h(m_S) = \frac{1}{\epsilon}(u_h \cdot n_h - \tilde{g})|_{m_S}$. Likewise, the error analysis is mostly parallel to the arguments in Theorem 4.1. Thereby, in the sequel we only focus on what will change due to the replacement of c_h by c_h^1 . In doing so, first we observe that:

Lemma 5.1. *Let $v_h \in V_h$ and $\tilde{\lambda} \in W^{1,\infty}(\tilde{\Omega})$. Then*

$$|c_h(v_h \cdot n_h, \tilde{\lambda}) - c_h^1(v_h \cdot n_h, \tilde{\lambda})| \leq h \|v_h\|_{L^1(\Gamma_h)} \|\tilde{\lambda}\|_{W^{1,\infty}(\tilde{\Omega})}.$$

Proof. Since the midpoint (barycenter) formula is exact for affine functions, one obtains

$$c_h(v_h \cdot n_h, \tilde{\lambda}) - c_h^1(v_h \cdot n_h, \tilde{\lambda}) = \sum_{S \in \mathcal{S}_h} \int_S v_h \cdot n_h (\tilde{\lambda} - \tilde{\lambda}(m_S)) d\gamma_h.$$

This combined with $\|\tilde{\lambda} - \tilde{\lambda}(m_S)\|_{L^\infty(S)} \leq \|\tilde{\lambda}\|_{W^{1,\infty}(\tilde{\Omega})} h$ (note that $\text{diam } S \leq h$) concludes the desired result. \square

Combining this lemma with the estimates of I_5 in the proof of Proposition 4.1, we see that (4.2)₁ remains the same even if we replace c_h by c_h^1 .

Next we consider the analysis of (4.2)₃, namely, the estimates for I_7 – I_{10} in the proof of Proposition 4.1. To this end we introduce a semi-norm in Λ_h by

$$|\mu_h|_{\Lambda_h} := c_h^1(\mu_h, \mu_h)^{1/2}.$$

By Lemma B.1 and Cauchy-Schwarz inequality, I_7 is bounded by $Ch^2|\mu_h|_{\Lambda_h}$ if $N = 2$ and by $Ch|\mu_h|_{\Lambda_h}$ if $N = 3$. By the regularity assumption $\tilde{u}, \tilde{g} \in W^{1,\infty}(\tilde{\Omega})$ and by Proposition A.2, we have $|I_8| + |I_9| \leq Ch^2|\mu_h|_{\Lambda_h}$. We notice that I_{10} in the present situation is zero. Therefore, instead of (4.2)₃ we obtain

$$(5.2) \quad |c_h^1((\tilde{u} - u_h) \cdot n_h, \mu_h) + \epsilon c_h^1(\lambda_h, \mu_h)| \leq Ch^j |\mu_h|_{\Lambda_h} \quad \forall \mu_h \in \Lambda_h,$$

where $j = 2$ if $N = 2$ and $j = 1$ if $N = 3$.

Finally, we consider the estimates of I_4 in the proof of Theorem 4.1. This time we may choose $\mu_h = I_h \tilde{\lambda}$ as an interpolation of $\tilde{\lambda}$. In view of the regularity assumption $\tilde{u} \in W^{2,\infty}(\tilde{\Omega})$ and $\tilde{\lambda} \in W^{1,\infty}(\tilde{\Omega})$ and by virtue of Lemma B.1, we have

$$\begin{aligned} |I_{41}| &\leq Ch^3, \quad |I_{42}| \leq Ch^2 |\lambda_h - \mu_h|_{\Lambda_h}, \quad |I_{43}| \leq Ch \|\tilde{u} - u_h\|_{H^1(\Omega_h)}, \\ |I_{45}| &\leq C\epsilon |\lambda_h - \mu_h|_{\Lambda_h}. \end{aligned}$$

By (5.2), $I_{44} \leq Ch^j |\lambda_h - \mu_h|_{\Lambda_h}$. Consequently, instead of (4.8) we obtain

$$|I_4| \leq C(h^2 + \epsilon + h^{2j}/\epsilon) + \frac{\alpha}{8} \|v_h - u_h\|_{H^1(\Omega_h)}^2 + \frac{\epsilon}{2} c_h^1(\lambda_h - \mu_h, \lambda_h - \mu_h).$$

From these observations, we arrive at the following result.

Theorem 5.1. *In addition to the hypotheses of Theorem 4.1 we assume that the solution (u, p) of (2.5) possesses the $W^{2,\infty}(\Omega)^N \times W^{1,\infty}(\Omega)$ -regularity. Let (u_h, p_h) be the solution of (5.1). Then there exists a constant $C = C(N, \Omega, \nu, u, p)$, independent of h and ϵ , such that*

$$(5.3) \quad \|\tilde{u} - u_h\|_{H^1(\Omega_h)} + \|(\tilde{p} + k_h) - p_h\|_{L^2(\Omega_h)} \leq C(h + \sqrt{\epsilon} + \frac{h^j}{\sqrt{\epsilon}}),$$

where $j = 2$ if $N = 2$ and $j = 1$ if $N = 3$.

Remark 5.1. According to the theorem, choosing $\epsilon = O(h^2)$ gives us the optimal rate of convergence $O(h)$ when $N = 2$. When $N = 3$, at least we see that introduction of reduced-order numerical integration does not deteriorate the rate of convergence. Our numerical example given in the next section shows that it does improve the accuracy for $N = 3$ as well.

6. NUMERICAL EXAMPLES

In the sequel, we refer to the schemes (3.1) and (5.1), i.e. without and with reduced-order numerical integration, as “non-reduced” and “reduced”, respectively.

6.1. Two-dimensional test. In this example, all the computations are done with the use of **FreeFem++** [15] choosing the P1/P1 element, i.e. $l = 1$, together with $\eta = 0.01$. Let Ω be the unit disk, namely, $\Omega = \{(x, y) \in \mathbb{R}^2 : x^2 + y^2 < 1\}$. We consider the slip boundary value problem (1.1) for $\nu = 1$ and for f, g, τ given by

$$f = \begin{pmatrix} -y(x^2 + y^2) + 16y \\ x(x^2 + y^2) \end{pmatrix}, \quad g = 0,$$

$$\tau = \begin{pmatrix} 1 - x^2 & -xy \\ -xy & 1 - y^2 \end{pmatrix} \begin{pmatrix} -12xy & 2(x^2 - y^2) \\ 2(x^2 - y^2) & -4xy \end{pmatrix} \begin{pmatrix} x \\ y \end{pmatrix},$$

in which case we have the analytical solution $u = (-y(x^2 + y^2), x(x^2 + y^2))^T$, $p = 8xy$. We also introduce the solution of the no-slip boundary value problem denoted by $(u^{\text{no-slip}}, p^{\text{no-slip}})$. Namely, it is determined according to the same f as above and to the boundary condition $u^{\text{no-slip}} = 0$ on Γ . Figure 6.1 shows the velocity profiles of the two solutions; one notices the clear difference in their circulating directions and in the maximum modulus of velocity.

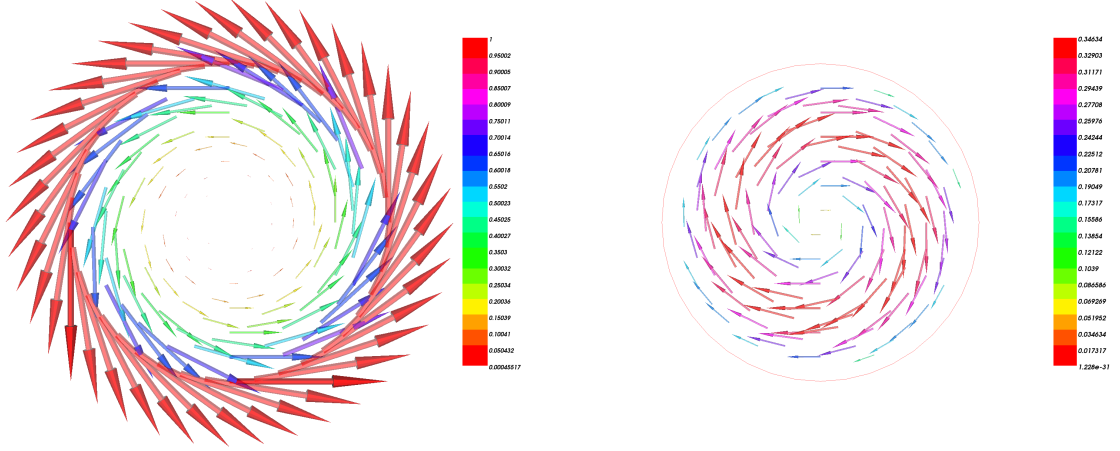


FIGURE 6.1. Velocity profiles of u (left) and $u^{\text{no-slip}}$ (right).

On a mesh with $h \approx 0.241$, we computed numerical solutions of the slip boundary value problem using the non-reduced/reduced schemes for three choices of the penalty parameter ϵ : $O(h)$, $O(h^2)$, and very small. The results are shown in Figure 6.2. We find that the reduced scheme gives more robust and accurate approximate solutions. In fact, in case $\epsilon = O(h)$, there are two spurious circulations inside Ω for the non-reduced scheme; we remark that refining a mesh and keeping $\epsilon = O(h)$ did not suppress them. For smaller ϵ the non-reduced scheme fails to capture the correct solution and seems to approach the no-slip boundary value problem. This behavior is somehow expected because letting $\epsilon \rightarrow 0$ in the penalty term of (3.1) implies (at least formally) the constraint $u_h \cdot n_h = 0$ on Γ_h , which undesirably collapses into $u_h = 0$ on Γ_h as observed in Section 1. However, the reduced scheme produces solutions which capture the slip boundary condition correctly for all $\epsilon > 0$ sufficiently small. Therefore, it is expected that the error bound (5.3) could be improved in such a way that the reciprocal of ϵ would not appear (we conjecture that some inf-sup condition like (4.9) would be valid).

Next we study the convergence property of the non-reduced and reduced schemes, whose solutions are denoted by $(u_h^{\text{NR}}, p_h^{\text{NR}})$ and $(u_h^{\text{R}}, p_h^{\text{R}})$, respectively. We compare the convergence behavior of them with that of the numerical solutions computed with the Dirichlet boundary condition, which are denoted by $(u_h^{\text{Dir}}, p_h^{\text{Dir}})$ (i.e., the boundary condition $u_h^{\text{Dir}} = u$ on Γ_h is imposed). The linear solver is chosen as UMFPACK, and $u - u_h$ and $p - p_h$ are interpolated into the quadratic finite element space to compute errors in the associated norms. For convenience, we also report errors in the $L^2(\Omega_h)^2$ -norm of velocity, and we remark that $\|u\|_{L^2(\Omega)} \approx 0.886$, $\|u\|_{H^1(\Omega)} \approx 3.355$, $\|p\|_{L^2(\Omega)} \approx 2.894$. The results are presented

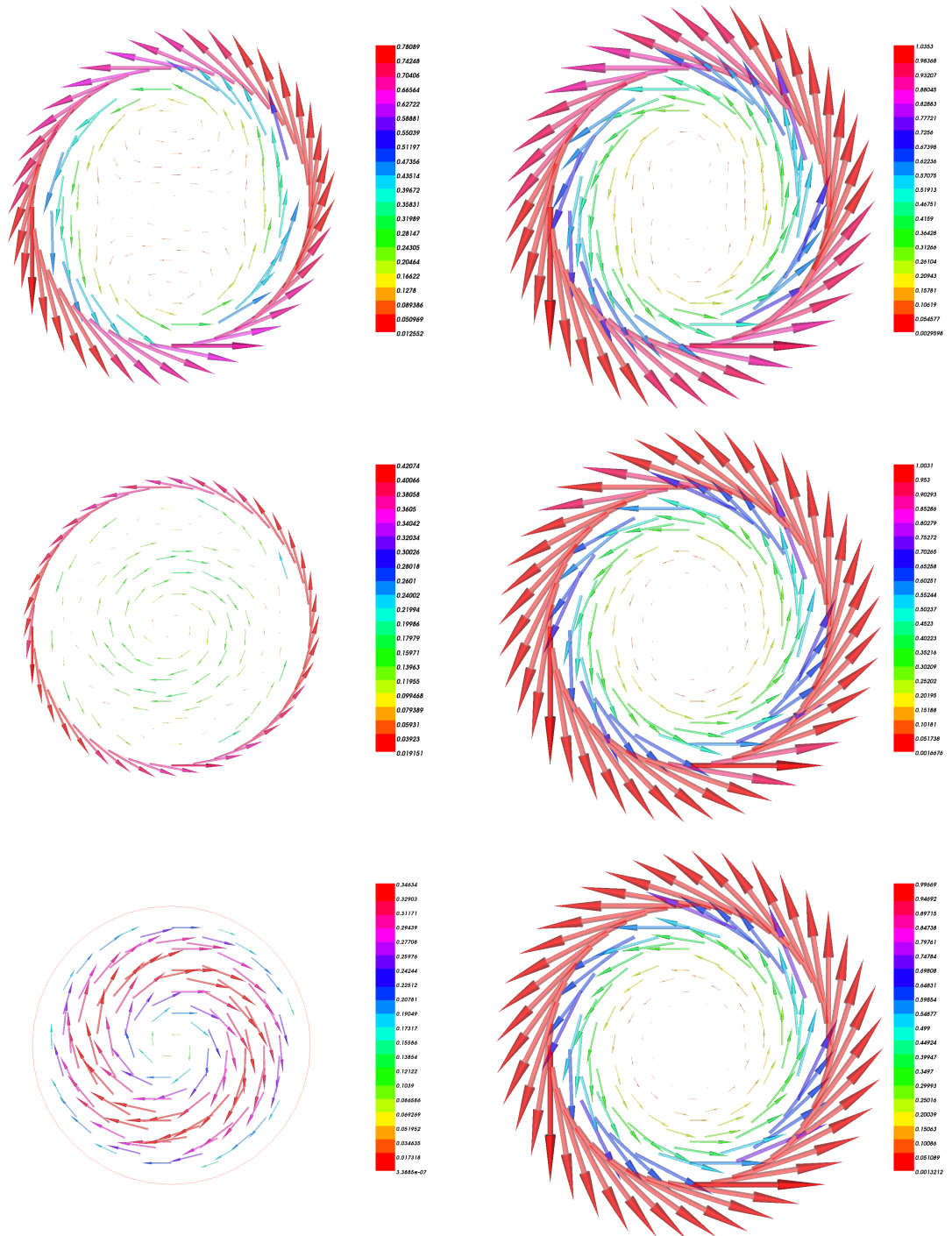


FIGURE 6.2. Velocity profiles of numerical solutions computed with non-reduced (left column) and reduced (right column) schemes. For each row (top to bottom), ϵ is chosen as $0.1h$, $0.1h^2$, 10^{-8} , where $h \approx 0.241$.

TABLE 6.1. Convergence behavior of velocity in the $H^1(\Omega_h)^2$ -norm in the 2D test (top: $\epsilon = 0.1h$, bottom: $\epsilon = 0.1h^2$). DOF means the number of degrees of freedom.

| h | DOF | $\ u - u_h^{\text{NR}}\ $ | Rate | $\ u - u_h^{\text{R}}\ $ | Rate | $\ u - u_h^{\text{Dir}}\ $ | Rate |
|-------|--------|---------------------------|-------|--------------------------|------|----------------------------|------|
| 0.316 | 333 | 1.043 | — | 0.575 | — | 0.464 | — |
| 0.165 | 1182 | 0.567 | 0.94 | 0.296 | 1.09 | 0.231 | 1.07 |
| 0.078 | 4488 | 0.310 | 0.81 | 0.145 | 0.94 | 0.114 | 0.94 |
| 0.045 | 17391 | 0.146 | 1.37 | 0.077 | 1.30 | 0.057 | 1.28 |
| 0.023 | 69270 | 0.074 | 1.02 | 0.039 | 1.02 | 0.028 | 1.02 |
| 0.012 | 274956 | 0.036 | 1.16 | 0.020 | 1.05 | 0.014 | 1.10 |
| h | DOF | $\ u - u_h^{\text{NR}}\ $ | Rate | $\ u - u_h^{\text{R}}\ $ | Rate | $\ u - u_h^{\text{Dir}}\ $ | Rate |
| 0.316 | 333 | 1.683 | — | 0.479 | — | 0.464 | — |
| 0.165 | 1182 | 1.559 | 0.12 | 0.232 | 1.12 | 0.231 | 1.07 |
| 0.078 | 4488 | 1.618 | (< 0) | 0.114 | 0.95 | 0.114 | 0.94 |
| 0.045 | 17391 | 1.412 | 0.25 | 0.057 | 1.28 | 0.057 | 1.28 |
| 0.023 | 69270 | 1.388 | 0.03 | 0.028 | 1.02 | 0.028 | 1.02 |
| 0.012 | 274956 | 1.293 | 0.11 | 0.014 | 1.10 | 0.014 | 1.10 |

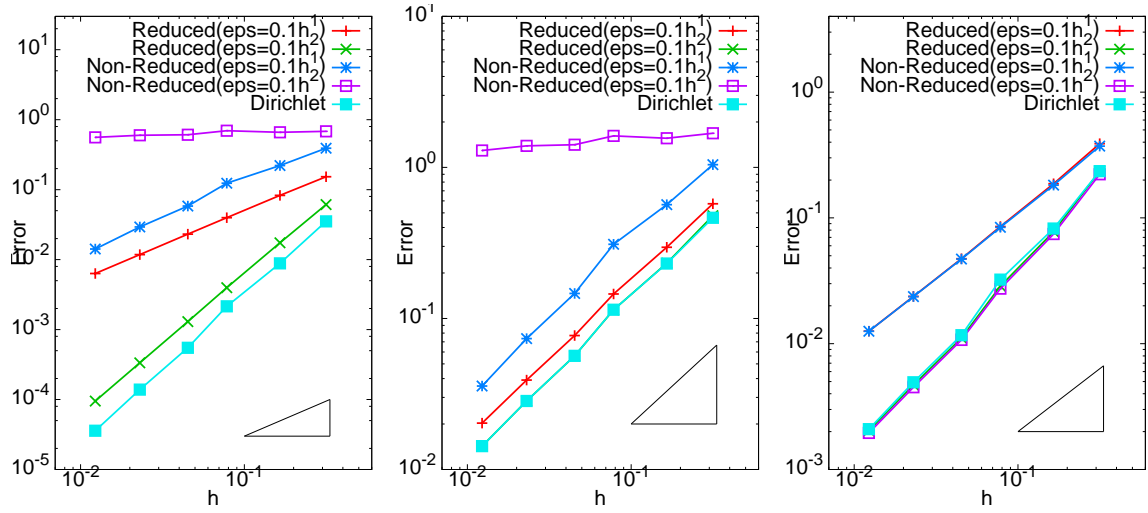


FIGURE 6.3. Convergence behavior of $\|u - u_h\|_{L^2(\Omega_h)}$ (left), $\|u - u_h\|_{H^1(\Omega_h)}$ (middle), $\|p - p_h\|_{L^2(\Omega_h)}$ (right) in the 2D test. The triangles indicate the slope $O(h)$.

in Table 6.1 and Figure 6.3 for two choices of ϵ . We find that $\|u - u_h^{\text{R}}\|_{L^2(\Omega_h)} = O(h^2)$ for $\epsilon = O(h^2)$ and that $\|u - u_h^{\bullet}\|_{H^1(\Omega_h)} = O(h)$ for $\bullet = \text{NR}, \text{R}$ and for $\epsilon = O(h)$, which cannot be explained by the theory. Nevertheless, the fact that the reduced scheme with $\epsilon = O(h^2)$ achieves the best accuracy is in accordance with the theoretical prediction. We see from Figure 6.3 that its accuracy in the energy norm is almost the same as that of $(u_h^{\text{Dir}}, p_h^{\text{Dir}})$.

6.2. Three-dimensional test. In this example, we focus on the verification of convergence. Let Ω be the unit sphere, i.e., $\Omega = \{(x, y, z) \in \mathbb{R}^3 : x^2 + y^2 + z^2 < 1\}$. We consider (1.1) for $\nu = 1$ and for f, g, τ such that the analytical solution is

$$u = \begin{pmatrix} 10x^2yz(y-z) \\ 10y^2zx(z-x) \\ 10z^2xy(x-y) \end{pmatrix}, \quad p = 10xyz(x+y+z).$$

TABLE 6.2. Convergence behavior of velocity in the $H^1(\Omega_h)^3$ -norm in the 3D test (top: $\epsilon = 0.1h$, bottom: $\epsilon = 0.1h^2$). Itr means the number of iterations required for GMRES to converge.

| h | DOF | $\ u - u_h^{\text{NR}}\ $ | Rate | Itr | $\ u - u_h^{\text{R}}\ $ | Rate | Itr | $\ u - u_h^{\text{Dir}}\ $ | Rate | Itr |
|-------|---------|---------------------------|------|------|--------------------------|------|------|----------------------------|------|------|
| 0.240 | 1.11E+4 | 1.471 | — | 69 | 1.048 | — | 70 | 1.268 | — | 76 |
| 0.113 | 1.12E+5 | 0.656 | 1.08 | 238 | 0.638 | 1.06 | 279 | 0.574 | 1.06 | 349 |
| 0.075 | 3.42E+5 | 0.454 | 0.89 | 352 | 0.448 | 0.86 | 352 | 0.405 | 0.85 | 393 |
| 0.062 | 6.59E+5 | 0.372 | 1.08 | 469 | 0.367 | 1.07 | 473 | 0.326 | 1.16 | 751 |
| 0.052 | 1.17E+6 | 0.306 | 1.05 | 655 | 0.303 | 1.04 | 658 | 0.266 | 1.10 | 790 |
| 0.045 | 1.88E+6 | 0.263 | 1.04 | 901 | 0.261 | 1.03 | 899 | 0.227 | 1.09 | 1979 |
| 0.039 | 2.39E+6 | 0.238 | 0.87 | 1749 | 0.236 | 0.87 | 1638 | 0.205 | 0.88 | 5179 |
| <hr/> | | | | | | | | | | |
| h | DOF | $\ u - u_h^{\text{NR}}\ $ | Rate | Itr | $\ u - u_h^{\text{R}}\ $ | Rate | Itr | $\ u - u_h^{\text{Dir}}\ $ | Rate | Itr |
| 0.240 | 1.11E+4 | 1.590 | — | 77 | 1.350 | — | 81 | 1.268 | — | 76 |
| 0.113 | 1.12E+5 | 0.877 | 0.79 | 270 | 0.579 | 1.13 | 304 | 0.574 | 1.06 | 349 |
| 0.075 | 3.42E+5 | 0.630 | 0.80 | 467 | 0.405 | 0.87 | 646 | 0.405 | 0.85 | 393 |
| 0.062 | 6.59E+5 | 0.575 | 0.49 | 742 | 0.327 | 1.15 | 782 | 0.326 | 1.16 | 751 |
| 0.052 | 1.17E+6 | 0.534 | 0.41 | 1111 | 0.271 | 1.02 | 1348 | 0.266 | 1.10 | 790 |
| 0.045 | 1.88E+6 | 0.493 | 0.54 | 1735 | 0.231 | 1.08 | 2175 | 0.227 | 1.09 | 1979 |
| 0.039 | 2.39E+6 | 0.477 | 0.29 | 2103 | 0.201 | 0.89 | 2600 | 0.205 | 0.88 | 5179 |

We remark that $\|u\|_{L^2(\Omega)} \approx 0.708$, $\|u\|_{H^1(\Omega)} \approx 4.943$, $\|p\|_{L^2(\Omega)} \approx 1.043$. The computations are done with the use of FEniCS [23] (combined with Gmsh [12] for obtaining meshes) choosing the P1/P1 element with $\eta = 0.1$. The linear solver is GMRES, preconditioned by incomplete LU factorization, with the restart number 200 and with the relative tolerance 10^{-8} . As in the previous example, $u - u_h$ and $p - p_h$ are interpolated into the quadratic finite element space to compute their norms. The results are reported in Table 6.2 and Figure 6.4. Except case of the non-reduced scheme with $\epsilon = O(h^2)$, the errors seem to converge at the rate $O(h)$, which is better than the theoretically predicted one $O(h^{1/2})$. Our opinion is that the interior errors would be dominant with the resolution of meshes considered here and that the suboptimal rate $O(h^{1/2})$ would be observed only for a very fine mesh. However, from the results we infer that the reduced-order numerical integration is also effective for the case $N = 3$, in which the choice of $\epsilon = O(h^2)$ may be recommended (although this was not justified by a rigorous proof). With this choice, as in the two-dimensional case, the accuracy in the energy norm is comparable with that of $(u_h^{\text{Dir}}, p_h^{\text{Dir}})$.

6.3. Affect of penalty parameter on linear solvers. It is known that the use of too strong penalty (i.e. small ϵ in our case) would lead to ill-conditioned problems (see e.g. [5]), which could deteriorate the performance of linear solvers. Therefore, we examine a condition number of the matrix A obtained from our penalty FE scheme, in particular, its dependency on the penalty parameter ϵ . For this purpose, we fix the mesh $h \approx 0.113$ in the 3D test, varying ϵ from 100 to 10^{-8} . Moreover, we consider only the reduced scheme since the behavior was similar for the non-reduced one. The condition number is then estimated by the Matlab function `condest(A)`. We also report the number of iterations required for GMRES and BiCGSTAB to converge, which were preconditioned by incomplete LU factorization. The results are presented in Table 6.3. It seems that the condition number grows at the rate $O(\epsilon^{-2})$, which is faster than the one explained in [5, p. 532]. One also notices that GMRES and BiCGSTAB failed to converge when $\epsilon < 10^{-5}$. We remark that, even for such small ϵ , sparse direct solvers like UMFPACK or MUMPS were able to solve the linear system (apparently with no problem). Although we do not have a good explanation of this phenomenon, it tells us that one should carefully choose ϵ in order to assure both the accuracy and the numerical stability, especially when one wants to invoke iterative methods for solving linear systems obtained from the penalty method.

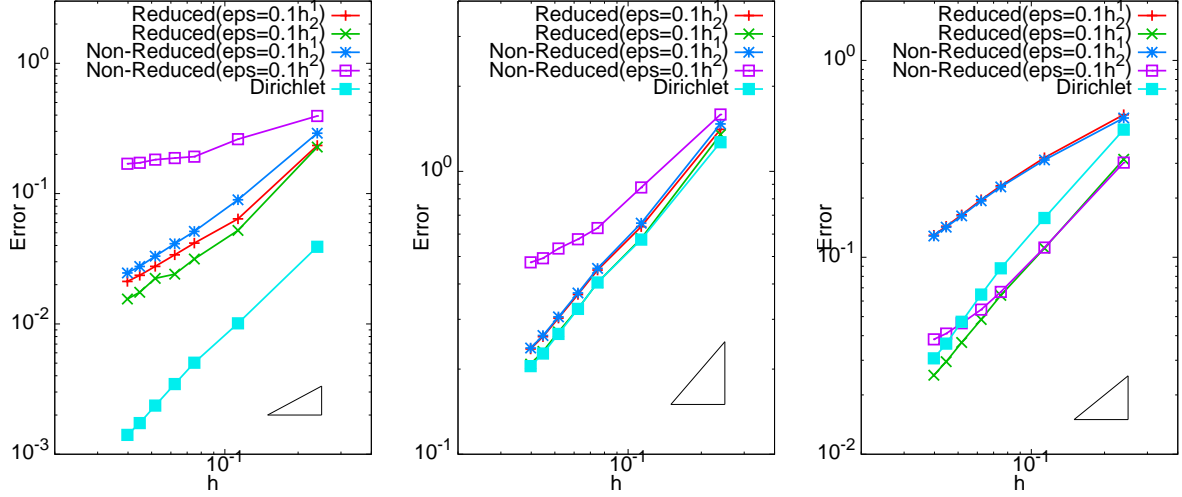


FIGURE 6.4. Convergence behavior of $\|u - u_h\|_{L^2(\Omega_h)}$ (left), $\|u - u_h\|_{H^1(\Omega_h)}$ (middle), $\|p - p_h\|_{L^2(\Omega_h)}$ (right) in the 3D test. The triangles indicate the slope $O(h)$.

TABLE 6.3. Penalty parameter, condition number, and number of iterations for GMRES (the 4th and 5th columns) or BiCGSTAB (the last column) to converge in the 3D test with the mesh $h \approx 0.113$ (DOF is 112476). The absolute and relative tolerances are set to 10^{-10} and 10^{-6} , respectively.

| ϵ | condest(A) | Rate | Itr (restart=30) | Itr (restart=200) | Itr (BiCGSTAB) |
|------------|------------|-------|------------------|-------------------|-----------------|
| 1.0E+2 | 2.36E+6 | — | 655 | 182 | 1373 |
| 1.0E+1 | 2.27E+6 | (< 0) | 672 | 191 | 165 |
| 1.0E+0 | 2.45E+6 | 0.03 | 733 | 195 | 516 |
| 1.0E-1 | 3.53E+6 | 0.16 | 392 | 165 | 264 |
| 1.0E-2 | 1.64E+7 | 0.67 | 480 | 139 | 152 |
| 1.0E-3 | 1.46E+8 | 0.95 | 539 | 195 | 894 |
| 1.0E-4 | 1.56E+9 | 1.03 | 1432 | 352 | 2888 |
| 1.0E-5 | 1.54E+11 | 2.00 | 28162 | 370 | 2293 |
| 1.0E-6 | 1.54E+13 | 2.00 | (not converged) | (not converged) | (not converged) |
| 1.0E-7 | 1.54E+15 | 2.00 | (not converged) | (not converged) | (not converged) |
| 1.0E-8 | 1.54E+17 | 2.00 | (not converged) | (not converged) | (not converged) |

7. CONCLUSION

We investigated the P1/P1 and P1b/P1 finite element approximations for the Stokes equations subject to the slip boundary condition in a domain with a smooth boundary. The constraint $u \cdot n = g$ on Γ is relaxed by using the penalty method, which enables us to avoid a variational crime and makes the numerical implementation easier. We developed a framework to address the difficulty due to $\Omega \neq \Omega_h$ and successfully applied it to establish error estimates of the finite element approximation. The use of reduced-order numerical integration together with $\epsilon = O(h^2)$ in the penalty term improves the accuracy, which was theoretically justified for $N = 2$ and was numerically confirmed for $N = 3$. In fact, we observed that the accuracy in the energy norm was comparable with that of numerical solutions subject to Dirichlet boundary conditions.

APPENDIX A. TRANSFORMATION BETWEEN Γ AND Γ_h AND RELATED ESTIMATES

Let Ω be a bounded domain in \mathbb{R}^N . Its boundary Γ is assumed to be $C^{1,1}$ -smooth, namely, there exist a system of local coordinates $\{(U_r, y_r, \varphi_r)\}_{r=1}^M$ and positive numbers α, β such that: 1) $\{U_r\}_{r=1}^M$ forms an open covering of Γ ; 2) $y_r = (y_{r1}, \dots, y_{rN-1}, y_{rN}) = (y'_r, y_{rN})$ is a rotated coordinate of the original one x , that is, $y_r = A_r x$ for some orthogonal transformation A_r ; 3) $\varphi_r \in C^{1,1}(\Delta_r)$ gives a graph representation of $\Gamma \cap U_r$, where $\Delta_r := \{y'_r \in \mathbb{R}^{N-1} : |y'_r| < \alpha\}$, that is,

$$\begin{aligned}\Gamma \cap U_r &= \{y_r \in \mathbb{R}^N : y'_r \in \Delta_r \text{ and } y_{rN} = \varphi_r(y'_r)\}, \\ \Omega \cap U_r &= \{y_r \in \mathbb{R}^N : y'_r \in \Delta_r \text{ and } \varphi_r(y'_r) < y_{rN} < \varphi_r(y'_r) + \beta\}, \\ \bar{\Omega}^c \cap U_r &= \{y_r \in \mathbb{R}^N : y'_r \in \Delta_r \text{ and } \varphi_r(y'_r) - \beta < y_{rN} < \varphi_r(y'_r)\}.\end{aligned}$$

Since Γ is compact, there exists $h_0 > 0$ such that for any $x \in \Gamma$ the open ball $B(x; h_0)$ is contained in some local coordinate neighborhood U_r . According to the fact that $C^{1,1}(\Delta_r) = W^{2,\infty}(\Delta_r)$, the derivatives of φ_r are bounded up to second order, i.e.,

$$\|\varphi_r\|_{L^\infty(\Delta_r)} \leq C_0, \quad \|\nabla' \varphi_r\|_{L^\infty(\Delta_r)} \leq C_1, \quad \|\nabla'^2 \varphi_r\|_{L^\infty(\Delta_r)} \leq C_2,$$

where C_0, C_1, C_2 are constants independent of r , and ∇' means $\nabla_{y'}$.

The smoothness of Γ is connected with that of the signed distance function $d(x)$ defined by

$$d(x) = \begin{cases} -\text{dist}(x, \Gamma) & \text{if } x \in \Omega, \\ \text{dist}(x, \Gamma) & \text{if } x \in \Omega^c. \end{cases}$$

We collect several known properties on $d(x)$ below. For the details, see e.g. [13, Section 14.6] or [8, Section 7.8]. Let $\Gamma(\delta) := \{x \in \mathbb{R}^N : |d(x)| < \delta\}$ be a tubular neighborhood of Γ with width 2δ . Then there exists δ depending only on the curvature of Γ such that for arbitrary $x \in \Gamma(\delta)$ the decomposition

$$(A.1) \quad x = \pi(x) + d(x)n(\pi(x)), \quad \pi(x) \in \Gamma,$$

is uniquely determined. Here, n is the outer unit normal field defined on Γ , which coincides with $\nabla d|_\Gamma$. We extend n from Γ to $\Gamma(\delta)$ by $n(x) = \nabla d(x)$, which also agrees with $n(\pi(x))$. The fact that Γ is $C^{1,1}$ -smooth implies that $d \in C^{1,1}(\Gamma(\delta))$, $n \in C^{0,1}(\Gamma(\delta))$, and $\pi \in C^{0,1}(\Gamma(\delta))$. We call $\pi : \Gamma(\delta) \rightarrow \Gamma$ the *orthogonal projection onto Γ* , in view of its geometrical meaning. We may assume that

$$\|d\|_{L^\infty(\Gamma(\delta))} \leq C_0, \quad \|\nabla d\|_{L^\infty(\Gamma(\delta))} \leq C_1, \quad \|\nabla^2 d\|_{L^\infty(\Gamma(\delta))} \leq C_2,$$

where we re-choose the constants C_0, C_1, C_2 if necessary.

Now we introduce a regular family of triangulations $\{\mathcal{T}_h\}_{h \downarrow 0}$ of $\bar{\Omega}$ in the sense of Section 3.1. As before, we denote by \mathcal{S}_h the boundary mesh inherited from \mathcal{T}_h , and we set $\bar{\Omega}_h = \cup_{T \in \mathcal{T}_h} T$ and $\Gamma_h = \cup_{S \in \mathcal{S}_h} S$. In order for Γ_h to be compatible with the local-coordinate system $\{(U_r, y_r, \varphi_r)\}_{r=1}^M$, we assume the following:

- 1) the mesh size h is less than $\min\{h_0, 1\}$;
- 2) for every $r = 1, \dots, M$, $\Gamma_h \cap U_r$ is represented by a graph $\{(y'_r, \varphi_{rh}(y'_r)) \in \mathbb{R}^N : y'_r \in \Delta_r\}$;
- 3) every vertex of $S \in \mathcal{S}_h$ lies on Γ .

From these we see that every $S \in \mathcal{S}_h$ is contained in some U_r and that φ_{rh} is a piecewise linear interpolation of φ_r . As a result of interpolation error estimates, for arbitrary r we obtain

$$\begin{aligned}\|\varphi_{rh}\|_{L^\infty(\Delta_r)} &\leq C_0, & \|\varphi_r - \varphi_{rh}\|_{L^\infty(\Delta_r)} &\leq C_{0E}h^2, \\ \|\nabla' \varphi_{rh}\|_{L^\infty(\Delta_r)} &\leq C_1, & \|\nabla'(\varphi_r - \varphi_{rh})\|_{L^\infty(\Delta_r)} &\leq C_{1E}h,\end{aligned}$$

where we re-choose C_0, C_1 if necessary and the subscript E refers to “error”. In the following, h is made small enough to satisfy $2C_{0E}h^2 < \min\{h_0, \delta\}$, which in particular ensures that π is well-defined on Γ_h . We may assume further that $\pi(S)$ is contained in the same U_r that contains S .

Based on the observations above, we see that the orthogonal projection π maps Γ_h into Γ . It indeed gives a homeomorphism between Γ_h and Γ , and is element-wisely a diffeomorphism, as shown below. The representation of a function $f(x)$ in each local coordinate (U_r, y_r, φ_r) is defined as $\tilde{f}(y_r) := f(A_r^{-1}y_r)$.

However, with some abuse of notation, we denote it simply by $f(y_r)$. Then, the local representation of the outer unit normal n associated to Γ is given by

$$n(y'_r, \varphi_r(y'_r)) = \frac{1}{K_r(y'_r)} \begin{pmatrix} \nabla' \varphi_r(y'_r) \\ -1 \end{pmatrix}, \quad y'_r \in \Delta_r,$$

where $K_r(y'_r) := \sqrt{1 + |\nabla' \varphi_r(y'_r)|^2}$. We are ready to state the following.

Proposition A.1. *If $h > 0$ is sufficiently small, then $\pi|_{\Gamma_h}$ is a homeomorphism between Γ_h and Γ .*

Proof. Let us construct an inverse map $\pi^* : \Gamma \rightarrow \Gamma_h$ of $\pi|_{\Gamma_h}$ which is continuous. To this end, we fix arbitrary $x \in \Gamma$ and choose a local coordinate (U_r, y_r, φ_r) of x such that $B(x; h_0) \subset U_r$. For simplicity, we omit the subscript r in the following. In view of the definition of $\pi(x)$ by (A.1), we introduce a segment given by

$$\begin{pmatrix} y' \\ \varphi(y') \end{pmatrix} + \frac{t}{K(y')} \begin{pmatrix} \nabla' \varphi(y') \\ -1 \end{pmatrix}, \quad |t| \leq 2C_{0E}h^2.$$

To each point on this segment we associate its height $H(t)$ with respect to the graph of φ_h , that is,

$$H(t) = \varphi(y') - \frac{t}{K(y')} - \varphi_h \left(y' + \frac{t}{K(y')} \nabla' \varphi(y') \right).$$

Then we assert that $\frac{d}{dt}H(t) < 0$ and that $H(-2C_{0E}h^2) > 0$, $H(2C_{0E}h^2) < 0$.

To prove the first assertion, letting

$$Y' := y' + \frac{t}{K(y')} \nabla' \varphi(y'),$$

we have $\frac{d}{dt}H(t) = -\frac{1}{K(y')}(1 + \nabla' \varphi(y') \cdot \nabla' \varphi_h(Y'))$. One sees that

$$\begin{aligned} \nabla' \varphi_h(Y') &= \nabla' \varphi(y') - \nabla' \varphi(y') + \nabla' \varphi(Y') - \nabla' \varphi(Y') + \nabla' \varphi_h(Y') \\ &=: \nabla' \varphi(y') + I_1 + I_2, \end{aligned}$$

where I_1 and I_2 satisfy

$$|I_1| \leq \|\nabla'^2 \varphi\|_{L^\infty(\Delta)} |Y' - y'| \leq C_2 \cdot 2C_{0E}h^2, \quad |I_2| \leq C_{1E}h.$$

Then it follows that

$$1 + \nabla' \varphi(y') \cdot \nabla' \varphi_h(Y') \geq K(y')^2 - C_1(2C_2C_{0E}h^2 + C_{1E}h).$$

From this we have $\frac{d}{dt}H(t) < 0$ provided $C_1(2C_2C_{0E}h^2 + C_{1E}h) < 1/2$. For the second assertion, one finds that

$$\begin{aligned} H(-2C_{0E}h^2) &= \frac{2C_{0E}h^2}{K(y')} + \varphi(y') - \varphi_h(Y') \\ &= \frac{2C_{0E}h^2}{K(y')} + \varphi(y') - \varphi(Y') + \varphi(Y') - \varphi_h(Y'), \end{aligned}$$

where Y' is $y' - \frac{2C_{0E}h^2}{K(y')} \nabla' \varphi(y')$. By Taylor's theorem, there exists some $\theta \in (0, 1)$ such that

$$\begin{aligned} \varphi(Y') - \varphi(y') &= \nabla' \varphi(y') \cdot (Y' - y') + \frac{1}{2} (Y' - y')^T \nabla'^2 \varphi|_{y' + \theta(Y' - y')} (Y' - y') \\ &\leq -\frac{2C_{0E}h^2}{K(y')} |\nabla' \varphi(y')|^2 + 2C_2C_{0E}^2h^4. \end{aligned}$$

By the definition of $K(y)$ and by $|\varphi(Y') - \varphi_h(Y')| \leq C_{0E}h^2$, we obtain

$$\begin{aligned} H(-2C_{0E}h^2) &\geq 2K(y')C_{0E}h^2 - 2C_2C_{0E}^2h^4 - C_{0E}h^2 \\ &\geq 2C_{0E}h^2 - 2C_2C_{0E}^2h^4 - C_{0E}h^2 = C_{0E}h^2(1 - 2C_2C_{0E}h^2), \end{aligned}$$

which implies that $H(-2C_{0E}h^2) > 0$ provided $C_2C_{0E}h^2 \leq 1/4$. In the same way, the last assertion $H(2C_{0E}h^2) < 0$ can be proved.

From these assertions we deduce that there exists a unique $t^*(x) \in [-2C_{0E}h^2, 2C_{0E}h^2]$ such that $H(t^*(x)) = 0$. Consequently, the map $\pi^* : \Gamma \rightarrow \Gamma_h; x \mapsto x + t^*(x)n(x)$ is well-defined. A direct computation combined with the uniqueness of the decomposition (A.1) shows that π^* is the inverse of $\pi|_{\Gamma_h}$. The continuity of π^* , especially that of t^* , follows from an argument similar to the proof of the implicit function theorem (see e.g. [20, Theorem 3.2.1]). \square

Proposition A.1 enables us to define an *exact triangulation* of Γ by

$$\pi(\mathcal{S}_h) = \{\pi(S) : S \in \mathcal{S}_h\}.$$

In particular, we can subdivide Γ into disjoint sets as $\Gamma = \bigcup_{S \in \mathcal{S}_h} \pi(S)$. Furthermore, for each $S \in \mathcal{S}_h$ we see that S and $\pi(S)$ admit the same domain of parametrization, which is important in the subsequent analysis. To describe this fact, we choose a local coordinate (U_r, y_r, φ_r) such that $U_r \supset S \cup \pi(S)$, and introduce the *projection to the base set* $b_r : \mathbb{R}^N \rightarrow \mathbb{R}^{N-1}$ by $b_r(y_r) = y'_r$. The domain of parametrization is then defined to be $S' = b_r(\pi(S))$. We observe that the mappings

$$\begin{aligned} \Phi : S' &\rightarrow \pi(S); & y'_r &\mapsto (y'_r, \varphi_r(y'_r))^T, \\ \Phi_h : S' &\rightarrow S; & y'_r &\mapsto \pi^*(y'_r, \varphi_r(y'_r)) = \Phi(y'_r) + t^*(y'_r)n(\Phi(y'_r)), \end{aligned}$$

are bijective and that Φ is smooth on S' . If in addition Φ_h , especially t^* , is also smooth on S' , then Φ and Φ_h may be employed as smooth parametrizations for S and $\pi(S)$ respectively. The next proposition verifies that this is indeed the case.

Proposition A.2. *Under the setting above, we have*

$$\|t\|_{L^\infty(S')} \leq \tilde{C}_{0E}h^2, \quad \|\nabla' t\|_{L^\infty(S')} \leq \tilde{C}_{1E}h,$$

where \tilde{C}_{0E} and \tilde{C}_{1E} are constants depending only on N and Γ .

Proof. Since the first relation is already obtained in Proposition A.1 with $\tilde{C}_{0E} = 2C_{0E}$, we focus on proving the second one. For notational simplicity, we omit the subscript r and also use the abbreviation $\partial_i = \frac{\partial}{\partial y_i}$ ($i = 1, \dots, N$). The fact that t^* is differentiable with respect to y' can be shown in a way similar to the proof of the implicit function theorem. Thereby it remains to evaluate the supremum norm of $\nabla' t$ in S' , which we address in the following.

Recall that $t^*(y')$ is determined according to the equation

$$(A.2) \quad \tilde{t}(y') = \varphi(y') - \varphi_h(y' + \tilde{t}(y')\nabla'\varphi(y')),$$

where we have set $\tilde{t}(y') := t^*(y')/K(y')$. Because $\nabla' t^* = K\nabla'\tilde{t} + \frac{\nabla'^2 \varphi \nabla' \varphi}{K} t^*$, it follows that

$$\|\nabla' t^*\|_{L^\infty(S')} \leq (1 + C_1)\|\nabla'\tilde{t}\|_{L^\infty(S')} + C_2C_1\tilde{C}_{0E}h^2.$$

Therefore, it suffices to prove that $\|\nabla'\tilde{t}\|_{L^\infty(S')} \leq Ch$; here and hereafter C denotes various constants which depends only on N and Γ .

Applying ∇' to (A.2) gives

$$(A.3) \quad (1 + \nabla'\varphi(y') \cdot \nabla'\varphi_h(Y'))\nabla'\tilde{t} = \nabla'\varphi(y') - \nabla'\varphi_h(Y') + \tilde{t}(y')\nabla'^2\varphi(y')\nabla'\varphi_h(Y'),$$

where $Y' := y' + \tilde{t}(y')\nabla'\varphi(y')$. By the same way as we estimated I_1 and I_2 in the proof of Proposition A.1, we obtain

$$\begin{aligned} |\nabla'\varphi(y') - \nabla'\varphi_h(Y')| &\leq C_2\tilde{C}_{0E}h^2 + C_{1E}h \leq Ch, \\ 1 + \nabla'\varphi(y') \cdot \nabla'\varphi_h(Y') &\geq K(y')^2 - C_1(C_2\tilde{C}_{0E}h^2 + C_{1E}h) \geq \frac{1}{2}. \end{aligned}$$

Also we see that

$$|\tilde{t}(y')\nabla'^2\varphi(y')\nabla'\varphi_h(Y')| \leq \tilde{C}_{0E}h^2 \cdot C_2C_1 \leq Ch^2.$$

Combining these observations with (A.3), we deduce the desired estimate $\|\nabla'\tilde{t}\|_{L^\infty(S')} \leq Ch$. \square

Remark A.1. Let $\Gamma \in C^{2,1}$. Since φ_h is linear on $b(S)$, further differentiation of (A.3) gives us $t^* \in C^{1,1}(\pi(S))$; in fact we have $\|\nabla'^2 t\|_{L^\infty(S')} \leq \tilde{C}_{2E}$. This implies that $\pi|_S$ is a $C^{1,1}$ -diffeomorphism between S and $\pi(S)$. However, since $\nabla'\phi_h$ is smooth only within $b(S)$, π is not globally a diffeomorphism.

Now we give an error estimate for surface integrals on Γ and Γ_h . Heuristically speaking, the result reads $|d\gamma - d\gamma_h| \leq O(h^2)$, which may be found in the literature (see e.g. [11]). Here and hereafter, we denote the surface elements of Γ and Γ_h by $d\gamma$ and $d\gamma_h$, respectively.

Theorem A.1. *Let $S \in \mathcal{S}_h$ and f be an integrable function on S . Then we have*

$$\left| \int_{\pi(S)} f d\gamma - \int_S f \circ \pi d\gamma_h \right| \leq Ch^2 \int_S |f| d\gamma,$$

where C is a constant depending only on N and Γ .

Proof. Let (U_r, y_r, φ_r) be a local coordinate that contains $S \cup \pi(S)$. We omit the subscript r and use the abbreviation $\partial_i = \frac{\partial}{\partial y_i}$ ($i = 1, \dots, N$). We represent the surface integral using the parametrization Φ as follows:

$$\int_{\pi(S)} f d\gamma = \int_{S'} f(\Phi(y')) \sqrt{\det G} dy',$$

where $G = (G_{ij})_{1 \leq i, j \leq N-1}$ denotes the Riemannian metric tensor given by $G_{ij} = \partial_i \Phi \cdot \partial_j \Phi$ (dot means the inner product in \mathbb{R}^N). Similarly, noting that $\pi \circ \Phi_h = \Phi$, one obtains

$$\int_S f \circ \pi d\gamma_h = \int_{S'} f(\Phi(y')) \sqrt{\det G_h} dy',$$

where G_h is given by $G_{h,ij} = \partial_i \Phi_h \cdot \partial_j \Phi_h$. Then we assert that:

$$\|G_h - G\|_{L^\infty(S')} \leq Ch^2.$$

To prove this, noting that $\Phi_h = \Phi + t^*n \circ \Phi$, we compute each component of $G_h - G$ as follows:

$$\begin{aligned} G_{h,ij} - G_{ij} &= \partial_i \Phi \cdot \partial_j (\Phi_h - \Phi) + \partial_j \Phi \cdot \partial_i (\Phi_h - \Phi) + \partial_i (\Phi_h - \Phi) \cdot \partial_j (\Phi_h - \Phi) \\ &= \partial_i \Phi \cdot \partial_j (t^*n \circ \Phi) + \partial_j \Phi \cdot \partial_i (t^*n \circ \Phi) + \partial_i (t^*n \circ \Phi) \cdot \partial_j (t^*n \circ \Phi) \\ &=: I_1 + I_2 + I_3. \end{aligned}$$

For I_1 , we notice that $\partial_i \Phi$ is a tangent vector so that $\partial_i \Phi \cdot n \circ \Phi = 0$. This yields

$$I_1 = \partial_i \Phi \cdot t^* \partial_j (n \circ \Phi) = t^* \partial_i \Phi \cdot (\partial_j n + \partial_j \varphi \partial_N n)|_\Phi,$$

which is estimated by $\tilde{C}_{0E} h^2 (1 + C_1)(C_2 + C_1 C_2)$ thanks to Proposition A.2. I_2 can be bounded in the same manner. To estimate I_3 , we observe that

$$\partial_i (t^*n \circ \Phi) = (\partial_i t^*)n \circ \Phi + t^* (\partial_i n + \partial_i \varphi \partial_N n)|_\Phi,$$

which is bounded by $\tilde{C}_{1E} h + \tilde{C}_{0E} h^2 (C_2 + C_1 C_2) \leq Ch$. Similarly one gets $|\partial_j (t^*n \circ \Phi)| \leq Ch$, hence it follows that $|I_3| \leq Ch^2$. Therefore, $|G_{h,ij} - G_{ij}| \leq Ch^2$, which proves the assertion.

Now we use the following crude estimate for perturbation of determinants (cf. [17, equation (3.13)]): if A and B are $N \times N$ matrices such that $|A_{ij}| \leq a$ and $|B_{ij}| \leq b$ for all i, j , then

$$|\det(A + B) - \det A| \leq N! N(a + b)^{N-1} b.$$

Combining this with the assertion above and also with $\sqrt{\alpha} - \sqrt{\beta} = (\alpha - \beta)/(\sqrt{\alpha} + \sqrt{\beta})$, we obtain

$$\|\sqrt{\det G} - \sqrt{\det G_h}\|_{L^\infty(S')} \leq Ch^2.$$

In addition, note that $\sqrt{\det G} = \sqrt{1 + |\nabla' \varphi|^2} \geq 1$. Consequently,

$$\left| \int_{\pi(S)} f d\gamma - \int_S f \circ \pi d\gamma_h \right| \leq Ch^2 \int_{S'} |f(\Phi(y'))| \sqrt{\det G} dy' = Ch^2 \int_{\pi(S)} |f| d\gamma,$$

which proves the theorem. \square

Remark A.2. Adding up the results of the theorem for all $S \in \mathcal{S}_h$ yields

$$\left| \int_{\Gamma} f d\gamma - \int_{\Gamma_h} f \circ \pi d\gamma_h \right| \leq Ch^2 \int_{\Gamma} |f| d\gamma.$$

It also follows that $\left| \int_{\Gamma_h} f \circ \pi d\gamma_h \right| \leq C \int_{\Gamma} |f| d\gamma$. Choosing in particular $|f|^p$ as the integrand gives $\|f \circ \pi\|_{L^p(\Gamma_h)} \leq C^{1/p} \|f\|_{L^p(\Gamma)}$ for $p \in [1, \infty]$.

Let f be a smooth function given on Γ . Then its transformation to Γ_h is defined by $f \circ \pi$. However, if f is extended to a neighborhood of Γ , e.g. to $\Gamma(\delta)$, then we may also consider f 's natural trace on Γ_h . The next theorem provides error estimation of these two quantities.

Theorem A.2. Let $f \in W^{1,p}(\Gamma(\delta_1))$, where $p \in [1, \infty]$ and $\delta_1 \in [\tilde{C}_{0E}h^2, 2\tilde{C}_{0E}h^2]$. Then,

$$\|f - f \circ \pi\|_{L^p(\Gamma_h)} \leq C\delta_1^{1-1/p} \|f\|_{W^{1,p}(\Gamma(\delta_1))},$$

where C is a constant depending only on p, N, Ω .

Proof. Since $\Gamma(\delta_1) = \bigcup_{S \in \mathcal{S}_h} \pi(S, \delta_1)$, where $\pi(S, \delta_1) = \{x \in \Gamma(\delta_1) : \pi(x) \in \pi(S)\}$ denotes a tubular neighborhood of S , it suffices to prove that

$$(A.4) \quad \int_S |f - f \circ \pi|^p d\gamma \leq C\delta_1^{p-1} \int_{\pi(S, \delta_1)} |\nabla f|^p dx \quad \forall S \in \mathcal{S}_h.$$

To this end, using the notation in Theorem A.1, we estimate the left-hand side of (A.4) by

$$\begin{aligned} \int_S |f - f \circ \pi|^p d\gamma &= \int_{S'} |f \circ \Phi_h - f \circ \Phi|^p \sqrt{\det G_h} dy' \\ &\leq C \int_{S'} |f \circ \Phi_h - f \circ \Phi|^p dy'. \end{aligned}$$

Here, for fixed $y' \in S'$ we have

$$\begin{aligned} f(\Phi_h(y')) - f(\Phi(y')) &= \int_0^1 \frac{d}{ds} f(\Phi(y') + s(\Phi_h(y') - \Phi(y'))) ds \\ &= \int_0^1 \frac{d}{ds} f(\Phi(y') + s t^*(y') n(\Phi(y'))) ds \\ &= \int_0^1 t^*(y') n(\Phi(y')) \cdot \nabla f(\Phi(y') + s t^*(y') n(\Phi(y'))) ds \\ &= \int_0^{t^*(y')} n(\Phi(y')) \cdot \nabla f(\Phi(y') + t n(\Phi(y'))) dt. \end{aligned}$$

Because $|t^*(y')| \leq \tilde{C}_{0E}h^2 \leq \delta_1$, it follows that

$$\begin{aligned} |f(\Phi_h(y')) - f(\Phi(y'))| &\leq \int_{-\delta_1}^{\delta_1} |\nabla f(\Phi(y') + t n(\Phi(y')))| dt \\ &\leq (2\delta_1)^{1-1/p} \left(\int_{-\delta_1}^{\delta_1} |\nabla f(\Phi(y') + t n(\Phi(y')))|^p dt \right)^{1/p}, \end{aligned}$$

where we have used Hölder's inequality. Consequently,

$$(A.5) \quad \int_S |f - f \circ \pi|^p d\gamma \leq C\delta_1^{p-1} \int_{S' \times [-\delta_1, \delta_1]} |\nabla f(\Phi(y') + t n(\Phi(y')))|^p dy' dt.$$

On the other hand, we observe that the N -dimensional transformation

$$(A.6) \quad \Psi : S' \times [-\delta_1, \delta_1] \rightarrow \pi(S, \delta_1); \quad (y', t) \mapsto \Phi(y') + t n(\Phi(y'))$$

is bijective and smooth. Application of this transformation to the right-hand side of (A.4) leads to

$$\int_{\pi(S, \delta_1)} |\nabla f|^p dx = \int_{S' \times [-\delta_1, \delta_1]} |\nabla f(\Phi(y') + t n(\Phi(y')))|^p |\det J| dy' dt,$$

where $J = (\partial_1 \Phi + t \partial_1(n \circ \Phi), \dots, \partial_{N-1} \Phi + t \partial_{N-1}(n \circ \Phi), n \circ \Phi)$ denotes the Jacobi matrix of Ψ . Letting $\tilde{J} := (\partial_1 \Phi, \dots, \partial_{N-1} \Phi, n \circ \Phi)$, we find that

$$\|J - \tilde{J}\|_{L^\infty(S' \times [-\delta_1, \delta_1])} \leq C\delta_1,$$

because $|t \partial_i(n \circ \Phi)| = |t(\partial_i n + \partial_i \varphi \partial_N n)|_\Phi \leq \delta_1(C_2 + C_1 C_2)$. This implies

$$\|\det J - \det \tilde{J}\|_{L^\infty(S' \times [-\delta_1, \delta_1])} \leq C\delta_1,$$

which combined with $\det \tilde{J} = K(y') \geq 1$ yields $\det J \geq 1/2$ if h is sufficiently small. Therefore,

$$(A.7) \quad \int_{\pi(S, \delta_1)} |\nabla f|^p dx \geq \frac{1}{2} \int_{S' \times [-\delta_1, \delta_1]} |\nabla f(\Phi(y') + tn(\Phi(y')))|^p dy' dt.$$

The desired estimate (A.4) is now a consequence of (A.5) and (A.7). This completes the proof. \square

Finally, we show that the L^p -norm in a tubular neighborhood can be bounded in terms of its width. Such estimate is stated e.g. in [35, Lemma 2.1] or in [28, equation (3.6)]. However, since we could not find a full proof of this fact (especially for $N = 3$) in the literature, we present it here.

Theorem A.3. *Under the same assumptions as in Theorem A.2, we have*

$$\|f\|_{L^p(\Gamma(\delta_1))} \leq C(\delta_1 \|\nabla f\|_{L^p(\Gamma(\delta_1))} + \delta_1^{1/p} \|f\|_{L^p(\Gamma)}),$$

where C is a constant depending only on p, N, Ω .

Proof. We adopt the same notation as in the proofs of Theorems A.1 and A.2. Then it suffices to prove that

$$\int_{\pi(S, \delta_1)} |f|^p dy \leq C \left(\delta_1^p \int_{\pi(S, \delta_1)} |\nabla f|^p dy + \delta_1 \int_{\pi(S)} |f|^p d\gamma \right) \quad \forall S \in \mathcal{S}_h.$$

To this end, using the transformation Ψ given in (A.6) we express the left-hand side as

$$\begin{aligned} \int_{\pi(S, \delta_1)} |f|^p dy &= \int_{S' \times [-\delta_1, \delta_1]} |f(\Psi(y', t))|^p |\det J(y', t)| dy' dt \\ &\leq C \int_{S' \times [-\delta_1, \delta_1]} (|f(\Psi(y', t)) - f(\Phi(y'))|^p + |f(\Phi(y'))|^p) dy' dt \\ &=: I_1 + I_2. \end{aligned}$$

For I_1 , we see from the same argument as before that

$$|f(\Psi(y', t)) - f(\Phi(y'))|^p \leq (2\delta_1)^{p-1} \int_{-\delta_1}^{\delta_1} |\nabla f(\Phi(y') + sn(\Phi(y')))|^p ds,$$

which yields

$$|I_1| \leq C\delta_1^p \int_{S' \times [-\delta_1, \delta_1]} |\nabla f(\Psi(y', s))|^p |\det J(y', s)| dy' ds = C\delta_1^p \int_{\pi(S, \delta_1)} |\nabla f|^p dy.$$

For I_2 , it follows that

$$|I_2| = 2C\delta_1 \int_{S'} |f(\Phi(y'))|^p dy' \leq 2C\delta_1 \int_{S'} |f(\Phi(y'))|^p \sqrt{\det G} dy' = 2C\delta_1 \int_{\pi(S)} |f|^p d\gamma.$$

We have thus obtained the desired estimate, which completes the proof. \square

APPENDIX B. ERROR OF n AND n_h

Let us prove that $|n \circ \pi - n_h| \leq O(h)$ on Γ_h and also that, when $N = 2$, it is improved to $O(h^2)$ if the consideration is restricted to the midpoint of edges.

Lemma B.1. *Let n and n_h be the outer unit normals to Γ and Γ_h respectively. Then there holds*

$$(B.1) \quad \|n \circ \pi - n_h\|_{L^\infty(\Gamma_h)} \leq Ch.$$

If in addition $N = 2$, $\Gamma \in C^{2,1}$, and m_S denotes the midpoint of $S \in \mathcal{S}_h$, then

$$(B.2) \quad \sup_{S \in \mathcal{S}_h} |n \circ \pi(m_S) - n_h(m_S)| \leq Ch^2.$$

Here, C is a constant depending only on N and Γ .

Proof. Let $S \in \mathcal{S}_h$ be arbitrary and let (U_r, y_r, ϕ_r) be a local coordinate that contains $S \cup \pi(S)$. We omit the subscript r in the following. One sees that n and n_h are represented as

$$n(y', \varphi(y')) = \frac{1}{\sqrt{1 + |\nabla' \varphi|^2}} \begin{pmatrix} \nabla' \varphi \\ -1 \end{pmatrix}, \quad n_h(y', \varphi_h(y')) = \frac{1}{\sqrt{1 + |\nabla' \varphi_h|^2}} \begin{pmatrix} \nabla' \varphi_h \\ -1 \end{pmatrix}, \quad y' \in \Delta.$$

A direct computation gives

$$(B.3) \quad |n(y', \varphi(y')) - n_h(y', \varphi_h(y'))| \leq 2|\nabla'(\varphi(y') - \varphi_h(y'))| \leq 2C_{1E}h.$$

This combined with the observation that

$$\begin{aligned} |n \circ \pi(y', \varphi_h(y')) - n(y', \varphi(y'))| &= |n \circ \pi(y', \varphi_h(y')) - n \circ \pi(y', \varphi(y'))| \\ &\leq C_1 |\pi(y', \varphi_h(y')) - \pi(y', \varphi(y'))| \\ &\leq C_1 \|\nabla \pi\|_{L^\infty(\Gamma(\delta))} |\varphi_h(y') - \varphi(y')| \\ &\leq C_1 \|\nabla \pi\|_{L^\infty(\Gamma(\delta))} C_{0E} h^2 \end{aligned}$$

proves (B.1). When $N = 2$ and $\Gamma \in C^{2,1}$, by using Taylor expansion, we find that m_S is a point of super-convergence such that $|\frac{d\varphi_h}{dy_1}(b(m_S)) - \frac{d\varphi}{dy_1}(b(m_S))| \leq Ch^2$. This improves (B.3) to $O(h^2)$, and thus (B.2) is proved. \square

Remark B.1. In the case $N = 3$, it is known that the barycenter of a triangle is not a point of super-convergence for the derivative of linear interpolations; see [34, p. 1930]. For this reason, (B.2) holds only for $N = 2$.

ACKNOWLEDGEMENTS

The authors thank Professor Fumio Kikuchi, Professor Norikazu Saito, and Professor Masahisa Tabata for valuable comments to the results of this paper. They also thank Professor Xuefeng Liu for giving them a program which converts matrices described by the PETSc-format into those by the CRS-format. The first author was supported by JST, CREST. The second author was supported by JSPS KAKENHI Grant Number 24224004, 26800089. The third author was supported by JST, CREST and by JSPS KAKENHI Grant Number 23340023.

REFERENCES

- [1] E. BÄNSCH AND K. DECKELNICK, *Optimal error estimates for the Stokes and Navier-Stokes equations with slip-boundary condition*, Math. Mod. Numer. Anal., 33 (1999), pp. 923–938.
- [2] E. BÄNSCH AND B. HÖHN, *Numerical treatment of the Navier-Stokes equations with slip boundary condition*, SIAM J. Sci. Comput., 21 (2000), pp. 2144–2162.
- [3] H. BEIRÃO DA VEIGA, *Regularity for Stokes and generalized Stokes systems under nonhomogeneous slip-type boundary conditions*, Adv. Differential Equations, 9 (2004), pp. 1079–1114.
- [4] S. C. BRENNER AND L. R. SCOTT, *The Mathematical Theory of Finite Element Methods*, Springer, 3rd ed., 2007.
- [5] P. CASTILLO, *Performance of discontinuous Galerkin methods for elliptic PDEs*, SIAM J. Sci. Comput., 24 (2002), pp. 524–547.
- [6] A. ÇAĞLAR, *Weak imposition of boundary conditions for the Navier-Stokes equations*, Appl. Math. Comput., 149 (2004), pp. 119–145.

- [7] A. ÇAĞLAR AND A. LIAKOS, *Weak imposition of boundary conditions for the Navier-Stokes equations by a penalty method*, Int. J. Numer. Meth. Fluids, 61 (2009), pp. 411–431.
- [8] M. C. DELFOUR AND J.-P. ZOLÉSIO, *Shapes and Geometries—Metrics, Analysis, Differential Calculus, and Optimization*, SIAM, 2nd ed., 2011.
- [9] I. DIONE, C. TIBIRNA, AND J. URQUIZA, *Stokes equations with penalised slip boundary conditions*, Int. J. Comput. Fluid Dyn., 27 (2013), pp. 283–296.
- [10] I. DIONE AND J. URQUIZA, *Penalty: finite element approximation of Stokes equations with slip boundary conditions*, Numer. Math., doi: 10.1007/s0021-014-0646-9 (published online).
- [11] G. DZIUK, *Finite elements for the Beltrami operator on arbitrary surfaces*, Lecture Notes in Math., 1357 (1988), pp. 142–155.
- [12] C. GEUZAIN AND J.-F. REMACLE, *Gmsh: a three-dimensional finite element mesh generator with built-in pre- and post-processing facilities*, Int. J. Numer. Meth. Eng., 79 (2009), pp. 1309–1331.
- [13] D. GILBARG AND N. S. TRUDINGER, *Elliptic Partial Differential Equations of Second Order*, Springer, 1998.
- [14] P. M. GRESHO AND R. L. SANI, *Incompressible Flow and the Finite Element Method*, John Wiley and Sons, 2000.
- [15] F. HECHT, O. PIRONNEAU, F. L. HYARIC, AND K. OHTSUKA, *FreeFem++*, available at www.freefem.org.
- [16] V. JOHN, *Slip with friction and penetration with resistance boundary conditions for the Navier-Stokes equations—numerical tests and aspects of the implementation*, J. Comput. Appl. Math., 147 (2002), pp. 287–300.
- [17] P. KNOBLOCH, *Discrete Friedrichs’ and korn’s inequalities in two and three dimensions*, East-West J. Numer. Math., 4 (1996), pp. 35–51.
- [18] ———, *Variational crimes in a finite element discretization of 3D Stokes equations with nonstandard boundary conditions*, East-West J. Numer. Math., 7 (1999), pp. 133–158.
- [19] ———, *A finite element convergence analysis for 3D Stokes equations in case of variational crimes*, Appl. Math., 45 (2000), pp. 99–129.
- [20] S. G. KRANTZ AND H. R. PARKS, *The Implicit Function Theorem—History, Theory, and Applications*, Birkhäuser, 2002.
- [21] W. LAYTON, *Weak imposition of “no-slip” conditions in finite element methods*, Comput. Math. Appl., 38 (1999), pp. 129–142.
- [22] M. LENOIR, *Optimal isoparametric finite elements and error estimates for domains involving curved boundaries*, SIAM J. Numer. Anal., 21 (1986), pp. 562–580.
- [23] A. LOGG, K.-A. MARDAL, AND G. N. WELLS, eds., *Automated Solution of Differential Equations by the Finite Element Method*, Springer, 2012.
- [24] J. NEČAS, *Direct Methods in the Theory of Elliptic Equations*, Springer, 2012.
- [25] H. SAITO AND L. E. SCRIVEN, *Study of coating flow by the finite element method*, J. Comput. Phys., 42 (1981), pp. 53–76.
- [26] V. A. SOLONNIKOV AND V. E. ŠČADILOV, *On a boundary value problem for a stationary system of Navier-Stokes equations*, Proc. Steklov Inst. Math., 125 (1973), pp. 186–199.
- [27] Y. STOKES AND G. CAREY, *On generalized penalty approaches for slip, free surface and related boundary conditions in viscous flow simulation*, Int. J. Numer. Meth. Heat and Fluid Flow, 21 (2011), pp. 668–702.
- [28] M. TABATA, *Uniform solvability of finite element solutions in approximate domains*, Japan J. Indust. Appl. Math., 18 (2001), pp. 567–585.
- [29] ———, *Finite element approximation to infinite Prandtl number Boussinesq equations with temperature-dependent coefficients—Thermal convection problems in a spherical shell*, Future Generation Computer Systems, 22 (2006), pp. 521–531.
- [30] M. TABATA AND A. SUZUKI, *A stabilized finite element method for the Rayleigh-Bénard equations with infinite Prandtl number in a spherical shell*, Comput. Methods Appl. Mech. Engrg., 190 (2000), pp. 387–402.
- [31] R. VERFÜRTH, *Finite element approximation of steady Navier-Stokes equations with mixed boundary conditions*, Math. Mod. Numer. Anal., 19 (1985), pp. 461–475.
- [32] ———, *Finite element approximation of incompressible Navier-Stokes equations with slip boundary condition*, Numer. Math., 50 (1987), pp. 697–721.
- [33] ———, *Finite element approximation of incompressible Navier-Stokes equations with slip boundary condition II*, Numer. Math., 59 (1991), pp. 615–636.
- [34] H. WEI, L. CHEN, AND Y. HUANG, *Superconvergence and gradient recovery of linear finite elements for the Laplace-Beltrami operator on general surfaces*, SIAM J. Numer. Anal., 48 (2010), pp. 1920–1943.
- [35] S. ZHANG, *Analysis of finite element domain embedding methods for curved domain using uniform grids*, SIAM J. Math. Anal., 46 (2008), pp. 2843–2866.

DEPARTMENT OF MATHEMATICS, TOKYO INSTITUTE OF TECHNOLOGY, 2-12-1 OOKAYAMA, MEGURO, TOKYO 152-8551, JAPAN

E-mail address: `tkashiwa@math.titech.ac.jp`

FACULTY OF SCIENCE AND ENGINEERING, WASEDA UNIVERSITY, 3-4-1 OKUBO, SHINJUKU, TOKYO 169-8555, JAPAN

E-mail address: `oikawa@aoni.waseda.jp`

GRADUATE SCHOOL OF MATHEMATICAL SCIENCES, THE UNIVERSITY OF TOKYO, 3-8-1 KOMABA, MEGURO, TOKYO 153-8914, JAPAN

E-mail address: `zhoug@ms.u-tokyo.ac.jp`