



Delft University of Technology

Foreword to the special section on Pacific Graphics 2020

Eisemann, Elmar; Zhang, Fang Lue

DOI

[10.1016/j.cag.2022.07.014](https://doi.org/10.1016/j.cag.2022.07.014)

Publication date

2022

Document Version

Final published version

Published in

Computers and Graphics (Pergamon)

Citation (APA)

Eisemann, E., & Zhang, F. L. (2022). Foreword to the special section on Pacific Graphics 2020. *Computers and Graphics (Pergamon)*, 107, 158-160. <https://doi.org/10.1016/j.cag.2022.07.014>

Important note

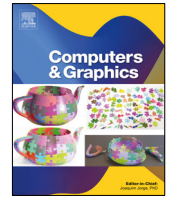
To cite this publication, please use the final published version (if applicable).
Please check the document version above.

Copyright

Other than for strictly personal use, it is not permitted to download, forward or distribute the text or part of it, without the consent of the author(s) and/or copyright holder(s), unless the work is under an open content license such as Creative Commons.

Takedown policy

Please contact us and provide details if you believe this document breaches copyrights.
We will remove access to the work immediately and investigate your claim.



Editorial

Foreword to the special section on Pacific Graphics 2020



The Pacific Conference on Computer Graphics and Applications, Pacific Graphics, is an annual flagship conference of the Asia Graphics Association. It is a premium forum for researchers, developers, and practitioners in the Pacific Rim and around the world to present and discuss new problems, solutions, and technologies in computer graphics and related areas. In 2020, Pacific Graphics was held in an online format, hosted in Wellington, New Zealand.

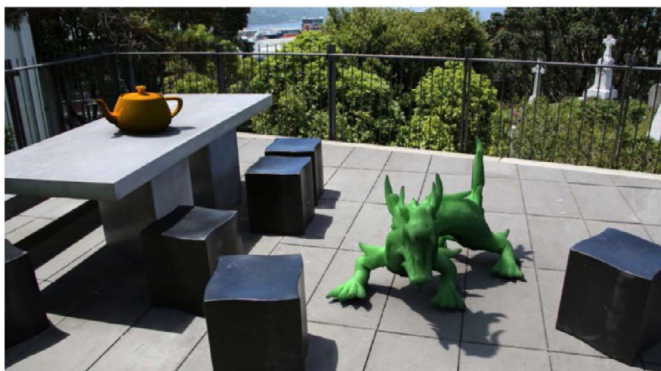
Not all conference presentations are connected to a full-paper publication, this special section of Computers and Graphics combines some of the finest contributions of the event, which were only now extended to full journal papers. The selection presented in this issue underwent a careful and competitive process. The first round consisted of a reviewing process by the program-committee members and external reviewers, who accepted seven short papers to be presented at the Pacific Graphics 2020 conference. A committee of domain experts was then tasked with the selection of a subset of these papers, deemed to have high potential to result in a strong full-paper contribution.

The authors of four papers were invited to provide a significantly extended and revised version of their work. These extended submissions then underwent a two-stage reviewing process, as for regular Computers & Graphics full papers to ensure the high quality set by the journal. Ultimately, three of these extended papers were accepted and published in this special issue, hence, truly representing Pacific Graphics Gems, spanning several different research domains. The topics cover the navigation in radiance-map databases [1], near-optimal pathfinding [2], and the simulation of curved folds [3], reflecting the broad variety of research directions at the Pacific Graphics Conference.

We would like to thank all individuals who have contributed to this special issue for their hard work, including all authors of the submitted papers, the members of the PG2020 Program Committees, the members of the special-issue committee, and all of the external reviewers. We also thank Prof. Joaquim Jorge for his help during the publishing process. We hope that you, the reader, will enjoy the content of this special issue!

Pacific Graphics 2020 General Co-Chairs

Taehyun Rhee (Victoria University of Wellington)



Shi-Min Hu (Tsinghua University)
Holly Rushmeier (Yale University)

Program Co-Chairs

Elmar Eisemann (Delft University of Technology)
Fang-Lue Zhang (Victoria University of Wellington)
Alec Jacobson (University of Toronto)

C&G Special Issue Committee

Jiri Kosinka (University of Groningen),
Markus Billeter (University of Leeds),
Leonardo Scandolo (TU Delft),
Jean-Marc Thierry (Telecom ParisTech)

International Program Committee

Mridul Aanjaneya (Rutgers)
Noam Aigerman (Adobe)
Yagiz Aksoy (SFU)
Seungbae Bang (University of Toronto)
Christopher Batty (University of Waterloo)
Bedrich Benes (Purdue)
Mikhail Bessmeltsev (University de Montreal)
Albert Chern (UCSD)
Etienne Corman (CNRS)
Jean Michel Dischler (University Strasbourg)
Yoshinori Dobashi (Hokkaido University)
Weiming Dong (Institute of Automonous of CAS)
George Drettakis (INRIA Sophia Antipolis)
Hongbo Fu (City University of Hong Kong)
Lin Gao (Institute of Computing of CAS)
Yotam Gingold (George Mason University)
Ioannis Gkioulekas (CMU)
Enrico Gobbetti (CRS4)
Diego Gutierrez (University of Zaragoza)
Vastimil Havran (CTU Prague)
Philipp Herholz (ETH Zurich)
Daniel Holden (Ubisoft)
Hui Huang (Shenzhen University) Stefan Jeschke (NVIDIA)
Anton Kaplanyan (Oculus)
Tom Kelly (Leed University)
Min H. Kim (KAIST)
Leif Kobbelt (RWTH Aachen University)
Taku Komura (Edinburgh University)
Jiri Kosinka (Groningen)
Paul Kry (McGill University)
Taesoo Kwon (Hanyang University)
Inkwon Lee (Yonsei University)
Kang Hoon Lee (Kwangwoon University)
Yoonsang Lee (Hanyang University)
Hendrik Lensch (University of Tuebingen)
David Levin (University of Toronto)
Wen-Chieh Lin (National Chiao Tung University)
Hsueh-Ti Liu (University of Toronto)
Shuaicheng Liu (Megvii)
Tiantian Liu (MSRA)
Shaoping Lu (Nankai University)
Pooran Memari (CNRS)
Dominik Michels (KAUST)
Rahul Narain (Indian Institute of Technology Delhi)
Yongwei Nie (South China University of Technology)
Junyong Noh (KAIST)
Miguel Otaduy (URJC Madrid)
Anjul Patney (NVIDIA)
Pieter Peers (Williams & Mary College)
Fabio Pellacini (Sapienza University of Rome)
Tiberiu Popa (Concordia)
Hong Qin (Stony Brook University)
Tobias Ritschel (UCL)

Christian Roessl (Otto von Guericke University Magdeburg)
Craig Schroeder (University of California at Riverside)
Tianjia Shao (Zhejiang University)
Alla Sheffer (University of British Columbia)
Gurprit Singh (MPI for Informatics)
Karan Singh (Toronto)
Melina Skouras (Inria)
Philipp Slusallek (Saarland University)
Justin Solomon (MIT)
Marc Stamminger (University of Erlangen)
Oded Stein (Columbia)
Markus Steinberger (TU Graz)
Kartic Subr (Edinburgh)
Jianchao Tan (Kwai)
Marco Tarini (University Milano/CNR)
Holger Theisel (University of Magdeburg)
Jean-Marc Thiery (Telecom-ParisTech)
Bernhard Thomaszewski (University de Montreal)
Ruo-Feng Tong (Zhejiang University)
Nobuyuki Umetani (University of Tokyo)
Amir Vaxman (Utrecht University)
Etienne Vouga (UT Austin)
He Wang (University of Leeds)
Jue Wang (Megvii)
Miao Wang (Beihang University)
Wenping Wang (The University of Hong Kong)
Jungdam Won (Seoul National University)
Enhua Wu (Macau University)
Hongzhi Wu (Zhejiang University)
Chris Wyman (NVIDIA Research)
Feng Xu (Tsinghua University)
Kai Xu (National University of Defense Technology)
Kun Xu (Tsinghua University)
Dongming Yan (Chinese Academy of Sciences) Lingqi Yan (UCSB)
Yong-Liang Yang (University of Bath)
Sung-Eui Yoon (KAIST)
Yonghao Yue (Columbia University)
Hao Zhang (Simon Fraser University)
Lei Zhang (Beijing Institute of Technology)
Song-Hai Zhang (Tsinghua University)
Yun Zhang (Communication University of Zhejiang)
Shuang Zhao (University of California)
Bo Zhu (Dartmouth College)
Jun-Yan Zhu (MIT)
Changqing Zou (UMIACS)

References

- [1] Chalmers Andrew, Zickler Todd, Rhee Taehyun. Illumination browser: An intuitive representation for radiance map databases. *Comput Graph* 2022;103:101–8.
- [2] Reischl Maximilian, Knauer Christian, Guthe Michael. Parallel near-optimal pathfinding based on landmarks. *Comput Graph* 2022;102:1–8.
- [3] Sasaki Kosuke, Mitani Jun. Simple implementation and low computational cost simulation of curved folds based on ruling-aware triangulation. *Comput Graph* 2022;102:213–9.



Elmar Eisemann is a professor at Delft University of Technology (TU Delft), heading the Computer Graphics and Visualization Group. Before he was an associate professor at Telecom ParisTech and a senior scientist heading a research group in the Cluster of Excellence (Saarland University / MPI Informatik).

His interests include real-time and perceptual rendering, visualization, alternative representations, and GPU acceleration techniques. He co-authored the book “Real-time shadows” and participated in various committees and editorial boards. He co-organized EGSR

2010, 2012, 2023, HPG 2012, and was paper chair of HPG 2015, EGSR 2016, GI 2017, PG20/21, and general chair of Eurographics 2018 in Delft. His work received several distinction awards and he was honored with the Eurographics Young Researcher Award 2011 and the Netherlands Prize for ICT Research 2019.



Fang-Lue Zhang is currently a lecturer at Victoria University of Wellington, New Zealand. He received his Bachelors degree from Zhejiang University, Hangzhou, China, in 2009, and the Doctoral degree from Tsinghua University, Beijing, China, in 2015. His research interests include image and video editing, computer vision, and computer graphics. He is a member of IEEE and ACM. He received the Victoria Early Career Research Excellence Award in 2019.

Guest Editors

Elmar Eisemann*

Delft University of Technology (TU Delft), The Netherlands

E-mail address: e.eisemann@tudelft.nl.

Fang-Lue Zhang

Victoria University of Wellington, New Zealand

15 July 2022

Available online 22 July 2022

* Corresponding editor.