



Since January 2020 Elsevier has created a COVID-19 resource centre with free information in English and Mandarin on the novel coronavirus COVID-19. The COVID-19 resource centre is hosted on Elsevier Connect, the company's public news and information website.

Elsevier hereby grants permission to make all its COVID-19-related research that is available on the COVID-19 resource centre - including this research content - immediately available in PubMed Central and other publicly funded repositories, such as the WHO COVID database with rights for unrestricted research re-use and analyses in any form or by any means with acknowledgement of the original source. These permissions are granted for free by Elsevier for as long as the COVID-19 resource centre remains active.

Dealing with bio- and ecological complexity: Challenges and opportunities[☆]

Ewart Carson^{a,*}, David Dagan Feng^b, Marie-Noëlle Pons^c,
Rodolfo Soncini-Sessa^d, Gerrit van Straten^e

^a Centre for Health Informatics, City University, Northampton Square, London EC1V 0HB, UK

^b School of Information Technologies, University of Sydney, Sydney, NSW 2006, Australia

^c LSGC-CNRS-ENSIC-INPL, 1 rue Grandville, BP 20451, 54001 Nancy Cedex, France

^d Dipartimento di Elettronica e Informazione, Politecnico di Milano, Piazza Leonardo da Vinci, 20133 Milano, Italy

^e Department of Agrotechnology and Food Science, Wageningen University, PO Box 17, 6700 AA Wageningen, The Netherlands

Received 8 July 2005; accepted 15 January 2006

Available online 27 June 2006

Abstract

The complexities of the dynamic processes and their control associated with biological and ecological systems offer many challenges for the control engineer. Over the past decades the application of dynamic modelling and control has aided understanding of their complexities. At the same time using such complex systems as test-beds for new control methods has highlighted their limitations (e.g. in relation to system identification) and has thus acted as a catalyst for methodological advance. This paper continues the theme of exploring opportunities and achievements in applying modelling and control in the bio- and ecological domains.

© 2006 Elsevier Ltd. All rights reserved.

Keywords: Agriculture; Biomedical systems; Biotechnology; Control systems; Ecology; Environmental systems; Modelling

1. Introduction

The complexities of the dynamic processes and their control that are associated with biological and ecological systems offer many challenges for the control engineer. Over the past decades the application of dynamic modelling and control has aided understanding of the complexities of their dynamics and control. For example, modelling carbohydrate metabolism in the human body has yielded quantitative insights regarding the control mechanisms of insulin and other hormones. In turn this has informed the design of a number of closed-loop control mechanisms that are now being developed to support the diabetic patient in controlling their blood glucose levels. At the same time using such complex systems as test-beds for new control methods has highlighted their limitations (e.g. in

relation to system identification) and has thus acted as a catalyst for methodological advance. This paper continues the theme of exploring opportunities and achievements in applying modelling and control in the bio- and ecological domains, building on the earlier work reported in Hashimoto, Farkas, Murase, Carson, and Sano (2004).

Each of the four thematic areas of agricultural, biomedical, environmental and biotechnological systems are considered in turn. In Section 2, current key problems for each of these four areas will be considered. Section 3 focuses on recent major accomplishments. Finally, Section 4 makes some forecasts for each of the areas as to where future development is likely to focus.

2. Current key problems

2.1. Control in agriculture

2.1.1. Adapting to the variability of land and of biological systems

The variability of land and of biological systems and processes must be taken into account for improving the efficiency of agricultural production, post-harvest handling,

[☆] Status report prepared by the IFAC coordinating committee on bio- and ecological systems.

* Corresponding author. Tel.: +44 20 7040 8370; fax: +44 171 477 8364.

E-mail addresses: e.r.carson@city.ac.uk (E. Carson), feng@it.usyd.edu.au (D.D. Feng), marie-noelle.pons@ensic.inpl-nancy.fr (M.-N. Pons), soncini@elet.polimi.it (R. Soncini-Sessa), gerrit.vanstraten@wur.nl (G. van Straten).

storage and transportation of the products. This is still very much an area where there are problems to be tackled. At the same time there is pressure for consumer safety and ecological sustainability. This implies that technological developments need to be directed towards correct treatment at the right place and at the right time. Examples for this can be found in animal production where automatic identification of stress or illness of individual animals will lead to individual treatments rather than a group treatment (Moshou et al., 2001).

Similarly one may see systems for automatic measurement and automatic composition of feed rations, climatic control, etc., according to the performance characteristics of individual animals. The measurement of the animal's response to different treatments ('speaking animals') will lead to performance identification (Aerts et al., 2003).

In plant production, in protected cultivation or in open fields, there is also a tendency to look at the production characteristics either of individual plants or of small patches of plants (Griepentrog, Norremark, Nielsen, & Blackmore, 2003). Combined variability of soil (spatial variability) and weather (temporal variability) plays an important role and must be taken into account together with the time-varying plant characteristics.

This will lead to automatic control of processes in the soil–substrate–plant–environment continuum or in phyto-factories whereby again plant responses to treatments serve as a basis for system identification (Baas, 2003; Morimoto & Hashimoto, 2000). This is a further development of the 'speaking plant' concept. Process design and control in protected cultivation and in storage of crops will be required for a very sharp reduction in energy use (Sigrimis & King, 2000).

Automatic detection of weeds, plant stress or imminent diseases will allow for appropriate local treatments, thereby minimising the impact on the environment. In this respect, it is most likely that sustainable as well as organic farming can only be possible or profitable if use is made of advanced and automated technologies.

In some regions (Europe, North America) there is a renewed interest in automation of harvesting and handling (quality sorting) of crops because of the difficulty of finding skilled labour at a reasonable cost and within the social and economic constraints. This is now especially so for high value crops in horticulture like fruit production or greenhouse production (De Baerdemaeker, 2001). Furthermore, automatic control will enhance and exploit the full working capacity of machines, rather than designing larger machines to increase capacity. Human comfort and ergonomics are also areas attracting new interest in relation to technology and automation.

Automation for tracking and tracing of products and of the production conditions (stage of maturity, variability, treatments, etc.) is another important area where there are issues to be addressed, in which information technology developments will undoubtedly play an important role. These are areas where advanced sensor and communication methods are used. In the end, the quality as experienced by the customer is the important issue. Here, packagings with integrated thin film micro sensors allow the user to see the integrated temperature history of the product. More advanced would be the direct control of a

microwave oven by information contained on the package about the current product.

2.2. *Modelling and control in biomedical systems*

2.2.1. *Disease modelling and public health*

The area of modelling disease transmission/propagation within a community or across biological/living systems constitutes a problem area where automation and automatic control methods and techniques could play an important role. The outbreak of a deadly new infectious disease, severe acute respiratory syndrome (SARS), which originated in the southern part of Mainland China and spread across Hong Kong, Vietnam, Singapore, Canada and some EU countries during the turn of 2003, has prompted public awareness about monitoring, preventing, and controlling the spread of disease as well as the need for access to the latest disease information (WHO, 2004).

The world had witnessed the power of public health measures including surveillance, infection control, isolation, and quarantine. Although the SARS outbreak is over and there have only been a small number of suspected cases in PR China recently, it is not possible to predict if and when another round of SARS outbreak will occur (indeed further occurrences were seen in 2004). In order to control a possible SARS outbreak, there is the need to be prepared. The development of a rapid and decisive surveillance system is paramount, and the keys to the successful implementation of such a system are up-to-date information on local, national, and global SARS activity and effective communication among local and international healthcare workers using web technologies (WHO, 2003a).

Yet another important issue in relation to disease control is to study the transmission mechanism of the disease by means of modelling (Riley, Fraser, & Donnelly, 2003). The results of modelling the transmission mechanisms are not only crucial to controlling and/or containing the disease outbreak, but also the hospital resource allocation and economic impact of the regions under threat by the disease (WHO, 2003a,b). Those data are very useful for referencing by neighbouring regions or distant regions for reallocating resource and planning for appropriate control policies in advance (WHO, 2003a).

As well as disease modelling in such a public health context as described above, there is also the need for further development of modelling methods for predicting patient length of stay in a hospital. This is a problem of substantial importance in terms of ensuring that the best possible use is made of scarce healthcare resources.

2.2.2. *Therapy delivery systems*

With a greater understanding of pharmacokinetics and pharmacodynamics at the molecular level, possibilities now exist for tailoring drug delivery systems designed to the needs of the individual patient. This raises a number of issues and opportunities in relation to modelling and control, seeking to develop smart drug delivery systems based on modelling the individual patient and the drug dynamics.

Image-guided surgery is another emerging area, where the delivery of the surgical therapy, is conditioned by feedback

provided during the time course of the surgical procedure. Such feedback utilises real-time modelling of the relevant physiological systems, reflecting the changing state of the patient during the course of surgery.

2.3. Modelling and control of environmental systems

2.3.1. Integrated water resources management

In many parts of the world, water demand is increasing while at the same time the availability and quality of water resources are decreasing, mainly due to human activities in connection with the growing world population, ongoing urbanisation, industrialisation and the intensification of agriculture. This development is often associated with general reductions in environmental quality and, as such, endangers sustainable development. Integrated approaches are required to identify and analyse such unfavourable and undesired developments and allow sustainable systems to be designed that integrate human society with its natural environment for the benefit of both.

It is generally agreed (Bonell & Askew, 2000) that integrated water resources management (IWRM GWP, 2000, 2003) plays a crucial role in this context and that a participatory approach would help to better control and accelerate the integration, make the decision process more transparent and comparable across various river basins and scales and increase confidence in an integrated model-based planning process. Though the popularity of IWRM as a concept has increased during the last decade, applications to real world cases of the paradigm mentioned in the literature are still remarkably few (see for instance Tortajada, Varis, & Biswas, 2004), thus leading to a growing scepticism (Biswas, 2004) as to the real potential of this attractive approach.

The development of proper legislation and policy is a key issue for the dissemination of integration and participation into water management practice (Wolf, 2002). At a European level the IWRM paradigm has been adopted by the Water Framework Directive (EC-WFD, 2000) that came into force in December 2000. The directive introduces a set of requirements to be fulfilled in order to reach an inland and coastal water “good status” by 2015 and sets out a detailed framework for the improved planning and management of water, including the development of River Basin Management Plans (RBMP) to be prepared within 2009 (WFD, Art. 13).

The Guidance Document for the Planning Process (EC-WFD-CIS-GD11, EU, 2003) explains (page 5) how the term integration should be intended in the implementation of such plans. Integration must concern many aspects, among which the following are particularly relevant:

- integration of environmental objectives;
- integration of all water uses, functions and values into a common policy framework;
- integration of all significant management and ecological aspects;
- integration of stakeholders in decision-making, by promoting transparency and information to the public and by involving stakeholders in the development of RBMP.

Again the GD11 recognises that planning is a process. This requires the provision of procedural guidance on the production and development of River Basin Management Plans supported by appropriate toolboxes that should help to identify the possible trade-offs amongst quantifiable objectives so that further debates and analysis can be more informed.

Moreover, the toolboxes must support planning as a systematic, integrative and iterative process. According to these requirements a general procedure (see Fig. 1) for participatory and integrated planning (PIP) has been developed (Castelletti & Soncini-Sessa, 2004), where the decision-making process is emerging as a process of social learning, which has to be supported by a multiobjective decision support system (MODSS), based on system identification, control and decision theories.

Furthermore, water reservoir management systems are emerging as a fundamental component in the design of new

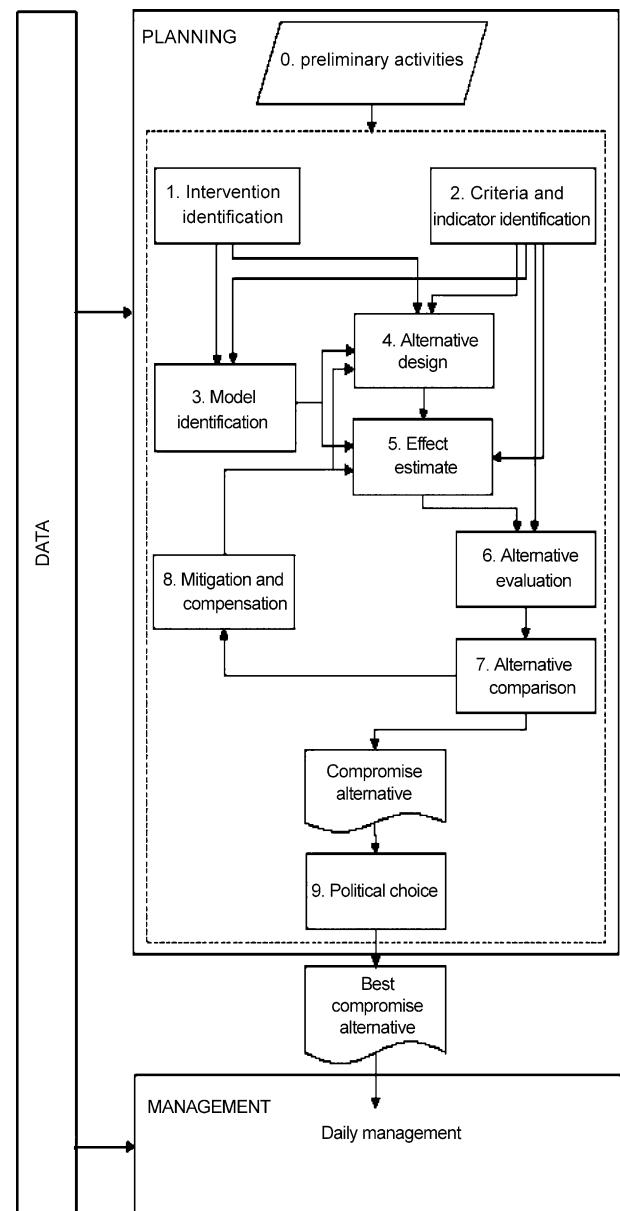


Fig. 1. The PIP procedure.

dams as the best reply to flood and drought events that the ‘greenhouse effect’ is going to make more and more frequent.

2.3.2. Other environmental sectors

Also, in other environmental sectors, such as air pollution, solid waste disposal and CO₂ emissions, the need emerges for behavioural models for complex decision analysis (Tamura, 2005), conflict resolution and the design of policy: e.g. a policy for nations on CO₂ emission trading.

2.4. Control of biotechnological processes

The goal of biotechnological processes is to optimise the performance of processes involving industrially important organisms (e.g. for the production of food products and additives), biomedically relevant species (e.g. for the production of antibiotics and other therapeutics) and the degradation of pollutants (e.g. wastewater treatment). This last area has been assuming ever-increasing importance during the past few years.

Most bioprocesses are run batchwise or fed batchwise. They are inherently highly nonlinear systems, due to the bioreaction kinetics on the one hand and to the operation mode on the other hand. They are poorly taken care of by linear controllers, developed to maintain a process around its steady-state.

Bioprocesses involved in wastewater treatment (domestic, urban or industrial) are mostly operated continuously, at least for large-capacity facilities. In contrast to “classical” bioprocesses which are based generally on a single species (bacteria, yeast, fungi, mammalian, plant or insect cells), they involve a complex ecosystem, where different micro-organisms (bacteria, protozoa, metazoa or archaea) should be kept in a good balance, in spite of highly variable influences. Whatever their size, wastewater treatment plants are complex nonlinear systems, subject to large perturbations (in flow, concentration and composition of the “substrate”) and where different physical (such as settling) and biological phenomena take place. This makes them difficult to control in order to achieve the tight discharge limits which are specified nowadays.

Much is being achieved in wastewater treatment control applications. However, there are still a number of areas where there are significant problems yet to be addressed. These predominantly relate to the measurement processes where there is the need for further developments in both hard and soft sensors for biotechnological system control. This in many instances is the limiting factor in advancing effective control systems.

3. Recent major accomplishments

3.1. Control in agriculture

3.1.1. Optimised crop cultivation

Much progress is being made in optimising cultivation of a wide variety of crops as a direct result of advances in measurement and control. These include advances in crop sensor technologies and developments in computing power which now makes model-based optimal control practicable (van Straten, Challa, & Buwalda, 2000).

There is a clear tendency towards individual plant monitoring. In particular, stem sap flow, leaf photosynthesis rate, leaf temperature, and stem or fruit perimeter can be measured on-line. The question remains, however, how this information can be used to control the crop as a whole. The solution to this question is related to natural variation between plants, and to spatial distributions. The latter problem is attacked now by advanced computational fluid dynamics (CFD) techniques (Reichrath & Davies, 2002). In relation to water, individual ions can be measured with ion-selective electrodes, thus allowing accurate feedback control to satisfy the demand of the plant (Sigrimis, Arvanitis, Pasgianos, & Ferentinos, 2001; van Straten & Gieling, 2004). As to the control itself, optimal control methodology now allows for economically optimal control. The bottle-neck here is the lack of sufficiently accurate crop quality models, although some progress has been made in a number of areas. A model for nitrate in lettuce has been used, for instance, to control the nitrate content of the head at harvest time (de Graaf et al., 2004).

Application areas where advances are occurring include greenhouse operation (van Straten, van Willigenburg, & Tap, 2002). Here, for instance, multi-level digital control systems with generalised functions for process control have been developed to meet greenhouse control requirements. Hierarchical schemes are typically employed whereby intelligence is shared amongst low level control loops of the controller and the higher level decisions made by a central process computer (Sigrimis, Arvanitis, & Pasgianos, 2000). Such schemes provide a platform for an open system to implement all modern (including optimal) control techniques and plant management strategies.

More generally, a crude indicator for the penetration of high technology, including computerised control and robotics in the greenhouse industry is provided by the percentage of soil-less cultivation (Hydroponics). Fig. 2 shows the percentage of hydroponic penetration across a range of countries.

3.1.2. Intelligent machinery

A further general area in which advances are occurring is that of intelligent machinery being used in the agricultural

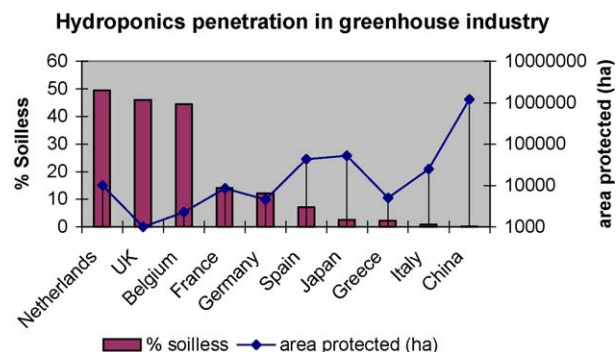


Fig. 2. Graph showing the percentage of soil-less protected cultivation of the total (bars, left axis) and the total greenhouse area in about 2000. In The Netherlands the degree of penetration is large and the potential total area modest, whereas in China the degree of penetration is very low, but the growth potential is enormous (adapted and expanded from van Os, 2000).

sector. This is a direct spin-off from developments in the electronics industry which sees both ever increasing specification coupled with price reductions that make widespread adoption both feasible and affordable. One example that has been around for some time is the use of geographical positioning systems (GPS) together with yield maps for precision farming (De Baerdemaeker, Munack, Ramon, & Speckmann, 2001; Earl, Thomas, & Blackmore, 2000).

Another challenge is the development of autonomous vehicles for agricultural operations (Bak & Jakobsen, 2004). This is stimulated by the needs from organic farming, where chemical weed control is not possible, thus necessitating time consuming, costly hand weeding. Intelligent autonomous vehicles with the right implements could have a role here, requiring the solution of a number of issues regarding autonomy, intelligence and safety. In the future, one may well see a development in the direction of individual plant treatment, even for field crops, using a fleet of co-ordinating smaller machines, that are working day and night.

3.1.3. Post harvesting

In storage technology, there is a similar tendency as in crop production, namely to strive for model-based quality control of the stored or transported product (Verdijck & van Straten, 2002). The agri-food sector is an area, where modern modelling and control methodology is penetrating rapidly (e.g. Bin & Da-Wen, 2002; Stigter, Scheerlinck, Nicolai, & van Impe, 2001).

3.2. Modelling and control in biomedical systems

3.2.1. Developments in model-based image interpretation

One of the important emerging areas where significant advance is occurring is improved imaging techniques, particularly molecular nuclear medicine imaging techniques (e.g., positron emission tomography (PET) and single-photon emission computed tomography (SPECT)), which allow *in vivo* study of physiological processes and provide *local* dynamic biochemical qualitative and quantitative information not available with conventional imaging modalities such as computer tomography (CT) and magnetic resonance imaging (MRI) (Phelps, 2000). For quantitative studies, intensive modelling, system identification and control theories and techniques are required (Feng, Ho, Iida, & Chen, 1997; Wong, 2005).

The recent combination of PET/CT provides a new opportunity to better match the quantitative biomedical process to its anatomical structure in the living human body and facilitates the monitoring of therapeutic response and progress of the treatment (Ell & von Schulthess, 2002). In this rapidly developing area, fast and reliable parameter estimation algorithms are extremely important, e.g. a fast algorithm for nonlinear system modelling is useful for neuroreceptor quantification and pharmacokinetic system identification.

3.2.2. Biomedical-informatics

Another developing area is bio-informatics involving modelling and control issues, which are also useful in

healthcare delivery and its management. Healthcare is a highly heterogeneous, widely distributed but scattered sector. Yet, healthcare activities are composed of intensive information exchanges and complex interactions among a large number of healthcare professionals, academic researchers, patients, and service administrators.

The explosive growth of the Internet and World-Wide-Web (www) has had a significant impact on information exchange, and increasingly health information is stored in an electronic format (e.g. electronic medical/health records) that greatly facilitates sharing of health information in a much more convenient way than previously (Dick, Steen, & Detmer, 1997).

Typically when one talks about electronic healthcare, two distinct, yet closely related categories of applications come to mind: (1) medical or health informatics, and (2) clinical applications. There are many possible and potential research directions in these two applications where modelling and control of biomedical systems is involved.

For example, the idea of establishing a computer-based hospital automation system within a hospital has been a strong desire for many hospital administrators in the world. In particular, electronic health record systems which store information about an individual's lifetime health status, and decision support systems that plan for the effective usage of hospital resources for the individual patient based on their health status and needs, are valuable assets that can enhance dissemination of individual patient information among different departments/wards and physicians within/across hospitals, and have a positive impact on decision-making (Dick et al., 1997).

3.2.3. Smart home-based monitoring and telecare

Complementing developments in the hospital sector, there is under way a very significant shift towards home care, particular in the management of elderly persons and patients with chronic diseases such as diabetes, hypertension and asthma (Coyle, Boydell, & Brown, 1995; Van Dyk & Halverson, 2000). This is being made possible as a result of advances in the application of information and communications technologies, leading to what is termed home telecare.

This embraces the provision of information to the patient in their home setting, the remote monitoring of the patient both as to their clinical status and their wider health status reflecting quality of life, and the provision of treatment and lifestyle advice to the patient, based on the interpretation of the home-monitored data.

This home telecare modality makes use of a wide range of measurement, modelling, decision-making and control methodologies. It is particularly relevant to the needs of elderly patients suffering from chronic diseases and is set to assume increasing importance as a component of overall healthcare delivery over the coming decade (Coyle et al., 1995; Warner, 1997). There is, however, still much evaluation work to be undertaken before such novel modalities of healthcare delivery are fully accepted as being cost effective, and in this regard modelling approaches have a clear role to play (Skiadas, Agroyiannis, Carson, & Cramp, 2002).

3.3. Modelling and control of environmental systems

3.3.1. Large scale systems

A number of advances are apparent in the way in which modelling methods are being applied to increase understanding of environmental systems. These include composite models being used to predict and estimate important environmental variables and to explore efficient environmental strategies and management schemes.

They are also being used in assessing influences and impacts for environmental change; how changes of input variables and/or environmental variables influence mutually the variables of the climate system, ecological systems, socio-economic activities, human lifestyle and others. More generally there is now evidence that policy decision-making in this arena is increasingly being based on assessment models. Examples include the exploration of scenarios and the evaluation of policies designed to mitigate the effects of global warming.

3.3.2. Identifiability of large simulation models

Large models are over-parameterised and so many different sets of parameter values will provide a similar explanation of the available data (*equifinality*). The alternatives are to use simpler, identifiable models; or constrain the parameters in some manner to a user-specified region of the parameter space (based on “expert” knowledge), either deterministically or stochastically (e.g. a numerical Bayesian approach) (Taylor, Chotai, & Young, 2000; Young, 1998, 2003; Young, McKenna, & Bruun, 2002).

In the last few years there has been a significant re-emergence of the ‘top-down’ approach as an alternative to reductionist, ‘bottom-up’ approaches. This is supported by a growing number of scientists and modellers, including the Chairman of the UK Natural Environment Research Council (NERC). Moreover a growing interest in numerical Bayesian methodology, or in simpler alternatives as a tool in modelling and data assimilation, has to be noted.

It is unlikely that the problem of identifying large simulation models will be resolved (since the ambiguity cannot be removed). However, it will be realised that: (a) simple models are, in any case, best for time series forecasting (e.g. flow and flood forecasting) so the difficulties with the larger models are not too important; (b) simple models can also form a basis for the construction of large simulation models (required for the purposes of “what-if” planning and design studies) that at least have an identifiable “core” which explains the “dominant modal dynamics”; (c) such large simulation models can then be handled using a numerical Bayesian approach or, preferably, a computationally simpler alternative.

3.3.3. Industrial applications

Developing trends can also be observed at the level of different types of industry, where environmental control challenges are having to be met. For instance, over the past two decades the car industry has not only successfully cleared regulations for exhaust gas emissions, but has also reduced fuel consumption by means of computer controlled devices.

In the area of water quality control, design challenges for sewage plants include those of regulating the total quantities of nitrogen and phosphorus being transmitted from the waste plant to the river. In this context, precise and detailed mathematical models are needed and are being developed to estimate the water quality and quantity. These include models to describe changes in water quality and quantity from rainfall to the sewage plant, and models describing the decomposition of organic substances by bacteria and the removal of phosphorus.

The purpose of such mathematical models is to estimate and predict the changes over time in water quality and quantity, to design a sewage treatment plant control system, to realise an on-line control and tuning algorithm based on the model, and so on. However, whilst progress is being made, there are still methodological challenges to be overcome, relating to the proper treatment of bacterial reaction, with their nonlinear dynamics and spatially wide processes.

3.4. Control of biotechnological processes

Many control strategies have been proposed in the literature for wastewater treatment plants but their evaluation and comparison are difficult. This is partly due to the variability of the influent, to the complexity of the physical and biochemical phenomena and to the large range of time constants (from a few minutes to several days) inherent to the activated sludge process or to the anaerobic digestion.

A benchmark for a continuous treatment process by activated sludge (BSM1), i.e. a simulation environment defining a plant layout, a simulation model, influent loads, test procedures and evaluation criteria has been proposed within the framework of COST Actions 682 and 624 (Alex et al., 1999; Copp, 2001; Pons, Spanjers, & Jeppsson, 1999) in Europe.

Extension of BSM1 toward plant-wide control is under development with the inclusion of anaerobic digestion of wasted sludge. This might have been an incentive for the new interest for these applications in the control community. Two sessions in the 15th IFAC World Congress in Barcelona were devoted to wastewater treatment. Out of the thirty papers presented in the sessions related to biotechnological processes, 50% concerned water treatment. A special section of Control Engineering Practice contains a selection of these contributions (Volume 12, Issue 3, pp. 241–373, 2004).

The bioreactor is still most of the time the only piece of equipment which is really looked at. However the whole integrated process should be included. There is definitely a need for a systemic methodology to take into account the whole integrated process. The reason for such difficulties might be that the downstream treatment (separation, crystallisation, etc.) is typically regarded as a chemical process rather than as a biochemical one.

The operations indeed are quite similar to the ones found in the fine chemicals industry but the specificity of biomolecules and the complexity of the fermentation broths should be strengthened out. As in chemical engineering, there is a strong desire for combining more design and control. This has been a

topic of discussion for many years but the real advances in that field seem rare.

The concept of bioreactor is also applicable to the cells themselves. The “Cell Factory” implies that by looking to the bioreactor we are not at the basic level of control and that we should discover and learn the regulatory pathways inside the cells to be able to act on them. The door to system biology opens up.

There might be, however, some discussion about the absolute necessity of elaborate complex biomodels. The lack of reliable on-line or *in situ* measurements has always been a problem in biotechnology. They would allow a shortening in the response time of the control loops and may allow the use of simpler models. Indeed some smart sensors are able to indicate when they are defective, which is already very useful information.

Instrumentation and monitoring are still major challenges. New sensors require years of development and testing before going on to the market, whose size is also an unfavourable factor. Basic sensors, mostly for physical and partly for chemical variables, are no longer a problem. What is more critical is the lack of sensors for biosubstances and for biomass.

The hopes which arose years ago from bioelectrodes have vanished in terms of their applications for bioprocess monitoring. They have found other fields of application. The bioindustry has probably not benefited enough from the development of microensors. One of the reasons might be the harsh conditions they should withstand during sterilisation by steam, a prerequisite for most bioreactors, and during cleaning-in-place procedures.

To counterbalance the lack of *in situ* sensors, great effort has to be put into purification and final quality control. Spectrophotometric techniques in the infra-red (near and medium), UV-visible (especially for wastewater treatment) and fluorescence combined with data mining techniques are promising (Lopes, Costa, Alves, & Menezes, 2004; Pons, Le Bonté, & Potier, 2004). Biomass characterisation is a key issue.

It is not just to determine its concentration, but also its morphological and physiological state. *In situ* devices such as *in situ* microscope, radio frequency impedance-meters and focused-beam reflectance meters have been successfully tested for some species, but the large variety of micro-organisms make the generalisation difficult.

In spite of the high non-linearities noted above, linear control theory and basic controllers (on/off PI(D)s, etc.) are still applied on most industrial bioprocesses. More sophisticated control should rely on models able to represent correctly the behaviour of biosystems. It has been a constant matter of discussion between academia and industry.

The complexity of the biological systems is such that simplistic models, which are nice to manipulate and help to simplify the underlying mathematics, cannot reflect the real situations. Therefore industry remains sceptical about their use.

On the other hand, complex models will contain large sets of parameters that should be identified. That means that the models should be not only theoretically identifiable but also experimentally, i.e. that experiments should be carefully

designed to provide valuable information. High throughput experimentation under well-controlled conditions allows for rapid screening of various operational conditions, but is not yet largely used in bioengineering.

Due to our lack of knowledge regarding the intrinsic phenomena taking place in living cells, uncertainty will be part of the picture for some time. The handling of uncertainty in the models is still hardly tackled (Aráuzo-Bravo et al., 2004). As a matter of fact, industry generally thinks that academia requires too much time to build models, when their time-to-market for new products should be as short as possible in a highly competitive framework. The real advantage and benefit of a better process control should be more stressed in order to induce industry to use it.

Industry is not the only party that should be convinced that improvement in product quality can come from better control. The regulation authorities, such as the FDA in the US, also need to be convinced. Once the way to produce a new molecule has been defined, it is very difficult to change the recipe. As mentioned before, when the time-to-market has to be as short as possible, robust and basic control is first applied, even if it is sub-optimal. The FDA and industry must be convinced of the use of models because they will in the end facilitate and improve the production pathways.

Since living organisms are implied, reproducibility of cell cultivations and reduction of variability from run to run deserve special consideration. In that field many successful industrial stories about the use of data mining techniques, such as principal components analysis, self-organising maps, projections on latent structures, artificial neural networks, have been reported. The large historical databases stored in industry for traceability purposes can be organised to detect rapidly off-specification batches or defective sensors or actuators.

In recent years industry has focussed largely on media optimisation, especially in cell cultures. There was indeed an interest in decreasing the variability induced by the use of natural substances, but the effect of bovine spongiform encephalopathy (BSE) has certainly played a role in such an effort towards fully defined media.

The true challenge of bioengineering lies in the understanding of how biological systems really work. Until recent years the focus has been on molecules such as nucleotide acids, proteins, etc. as the tools for investigation at a molecular level were just becoming available. It is necessary now to understand how the different elements interact between themselves in metabolic networks and cell-signaling pathways (Kitano, 2002a,b).

The structure, the dynamics, and the control methods have to be studied. Identifiability (Zak, Gonye, Schwaber, & Doyle, 2003) and robustness issues arise. High throughput data methods yield insights into the functions of cells, but limitations still exist in the information content they deliver. As the flux of information is increasing, new bioinformatics developments are needed for data validation and analysis of heterogenous data, as well as for the representation and exchange of network models (Hucka et al., 2003). As the control loops exist and do not have to be designed from scratch,

the next step will be to modify them to achieve properly designed drugs to cure illnesses (Kitano, 2004) and increase cell productivity (Kauffman, Pridgen, Doyle, Dhurjati, & Robinson, 2002) by proper disturbances.

4. Forecasts

4.1. Control in agriculture

In agriculture and horticulture it can be expected that the trend towards more technical options for acquiring information through dedicated (bio)sensors and vision techniques, together with increased intelligence in machinery and control equipment will materialise in a number of new products in the market.

For instance, in greenhouse cultivation, the manufacturers of greenhouse climate control computers are already building in more advanced control schemes, thus enabling the growers to economise on resources like energy—in the moderate temperature zones of the world—or water—in semi-arid regions. Also, this equipment will become more and more part of enterprise scale management systems, thus enabling the grower to respond to market demands in a more flexible and more profitable way.

In all agricultural sectors, automation will progress as well, first in regions of the world where labour costs are high, but eventually elsewhere as well. Various handling activities, such as grafting, planting, fruit picking, harvesting, will become partly or fully automated. Although truly autonomous vehicles are still somewhat remote, automatic guidance is under reach. Also, advanced intelligent implements, such as weeders, will find their way, especially driven by the needs of organic farming first, and then gradually into conventional agriculture as well. Standardised bus systems will also help to promote more intelligent machinery.

In the longer run, sensors and sensor networks with cheap communication will enable the operation on the scale of individual plants or animals, and this will support the demand for better quality control—based on scientifically sound quality models still to be developed. Farmers and growers will become active players in the production chain, where tracing and tracking in combination with extensive information flows over the complete chain or web in conjunction with the internet will form a new environment in which controllers and control strategies developed by the control community have to operate.

4.2. Modelling and control in biomedical systems

Within the biomedical area, a number of areas are likely to experience rapid growth in the forthcoming years. It is expected, in particular, that bioinformatics, which covers a wide spectrum of scientific and applied research, will receive much attention. Areas affected will include healthcare delivery and its management, molecular and cell biology, molecular imaging, and drug development, to name just a few. Healthcare activities are characterised by intensive information exchanges and complex interaction among a large number of healthcare professionals.

Rapid increases in health information have raised the question of how information can be stored and exchanged efficiently across hospitals, wards and referring physicians over the Internet. It is very important that this question should be answered ‘correctly’, because an ‘incorrect’ answer may lead to an inefficient storage/dissemination of health information and impact adversely on hospital resource allocation.

Rapid developments in communication technologies will also result in an expansion of what is termed home telecare, which greatly facilitates, for example, remote monitoring and management of patients, both as to their health status and the status of their home environment. This is particularly beneficial to elderly people and patients with long-term diseases such as diabetes and asthma.

In conjunction with rapid advances in biomedical instrumentation and related technologies, the elucidation of DNA structure in 1958 and completion of the sequencing of the human genome projects in 2003 have accelerated development of basic molecular and new biological assay techniques that can further our basic understanding of human disease, including cancer. In molecular and cell biology, much of the current research focuses on elucidating the functions of specific genes or gene products and understanding of the interactions between different gene products in specific pathways. This research is set to develop further.

These advances have also paved the way for the development of transgenic animal models of human disease, where the molecular basis of disease concerned can be studied in a living organism by exploring the patterns of gene expression that encode for the underlying biological (and pathological) processes and many other functions that cells perform.

Further advances are likely in relation to *in vivo* molecular imaging technologies such as positron emission tomography (PET). Different imaging probes (i.e. radiolabelled substrates and targeted contrast agents) are being developed to examine the integrative functions of molecules, cells, tissues, and whole organisms, and to validate the *in vitro* measurements in a repetitive and non-invasive manner.

With the use of animal models of disease and molecular imaging, it will become possible to perform certain kinds of studies that are rarely performed in humans because of practical or ethical issues. In conjunction with biopsy and tissue assays techniques, molecular imaging provides additional information that can be extracted from modelling the kinetic fate of the imaging probes within tissues.

With knowledge gained from kinetic modelling of the imaging probes and the tissue analysis, new imaging probes will be designed to study certain molecular pathways of interest that become altered in disease. The recent combined PET and computer tomography (CT) provides a new opportunity to better match the quantitative biomedical process to its anatomic structure in living human body and facilitates the monitoring of therapeutic response and progress of the treatment. Development of fast and reliable parameter estimation algorithms is extremely important for this task and much research effort is likely in addressing this issue.

4.3. Modelling and control of environmental systems

Integrated water resources management will expand from the first experimental case studies developed by universities and research institutes, with the first steps being taken towards systematic application in real world situations. In fact the new Water Frame Directive of the European Union requires the adoption of a River Basin Management Plan within the time frame up to 2009 for all the basins in the Union. This will afford great opportunities of work for consultants and engineering companies, together with new research challenges. Moreover the IWRM scheme will not only be adopted in the EU, but will also be distributed all over the world, due to the intensive dissemination action that the EU is planning. This will be facilitated by the emerging trend to create a large modelling support system on the web.

In the Water Quality Control Field it can be expected that the trend towards the adoption of automatic control of the whole treatment process will continue, resulting in the emergence of a number of new products in the market.

The availability of cheap computing power, especially through parallel computing facilities, will enable the diffusion of real time distributed controllers for the management of complex water reservoir networks. The automatic control of water reservoirs and regulated lakes will eventually move towards becoming standard practice.

4.4. Control of biotechnological processes

A better understanding of the control structure within organisms is expected to help to design new drugs that are needed to fight illnesses such as cancers or pathogens-related diseases, for which multi-drug resistance is raising alarms. The availability of increasing computing power will help to simulate the intricate expression networks.

Successful process analytical technologies (PATs), which combine techniques for in-process monitoring, data-based modeling and process control, will drive the control quality in drugs production, to improve their safety and the efficiency.

At the fringe between bioengineering and environmental engineering, the development of PATs devoted to wastewater treatment will help to ensure a safe and sufficient production of drinking water, as the decreasing availability of fresh water around the world may be the cause of serious conflicts in the future.

5. Conclusions

This paper has reviewed some of the challenges and opportunities that arise, from a control engineering perspective, when dealing with processes and systems across the bio- and ecological spectrum, together with advances that have been made. From the foregoing sections it is clear that in a variety of ways they all exhibit complexity. Yet despite this complexity, much has been achieved through the application of systems, modelling and control methods and techniques that is of benefit to industry and society, as well as to the research community.

In some senses this biological and ecological spectrum exhibits very real and considerable diversity. At the same time there are commonalities and parallels as one explores the nature of agricultural, biomedical, environmental and biotechnological processes and systems. Complexity manifests itself through the number of variables involved and the extent and form of their inter-connection. Nonlinear, time-varying, stochastic and hierarchical patterns of behaviour also provide evidence of complexity and are widely to be found in the topics that have been reviewed.

Model-based analyses of bio- and ecological systems have yielded much insight into the nature of this complexity, in turn enabling control system approaches to be applied with greater effect. Analytically, much quantitative understanding has been achieved in relation to control mechanisms, both at the physiological or process level as well as in relation to system management. Here there are both similarities and differences across the different application domains. For instance, control in the context of resource management is an area of on-going development in agricultural and environmental systems, as also in the case of hospital management. Automation is increasingly applied not only in biotechnological processes and systems, but also in agriculture. Advances in the understanding of disease control, from a control system perspective are major ongoing achievements in both the biomedical and agricultural sectors. Endeavours aimed at process optimisation are current in agriculture (the growth of both crops and animals), in biomedicine (e.g. optimising radiotherapy in relation to the management of the cancer patient), and in biotechnological processes.

In terms of modelling methodology, the complexities of biological and ecological systems have offered challenges to the mathematical modeller, particularly in relation to identification, parameter estimation and validation. As already discussed, over the past three decades these application domains have highlighted limitations in existing methods and have paved the way for a range of methodological advances.

In summary, the control engineer is responding in a variety of ways to the many challenges offered by the complexities bio- and ecological systems. Much has already been achieved for the benefit of the specific industries and organisations, and for society more generally. Much more will be achieved over the coming years.

References

- Aerts, J.-M., Wathes, C. M., & Berckmans, D. (2003). Dynamic data-based modelling of heat production and growth of broiler chickens: Development of an integrated management system. *Biosystems Engineering*, 84(3), 257–265.
- Alex, J., Beteau, J. F., Hellings, C., Jeppsson, U., Marsili-Libelli, S., Pons, M.-N., Spanjers, H., & Vanhoorn, H. (1999). Benchmark for evaluating control strategies in wastewater treatment plants. In *Proceedings of the ECC'99*.
- Aráuzo-Bravo, M. J., Cano-Izquierdo, J. M., Gómez-Sánchez, E., López-Nieto, M. J., Dimitriadis, Y. A., & López-Coronado, J. (2004). Automation of a penicillin production process with soft sensors and an adaptive controller based on neuro fuzzy systems. *Control Engineering Practice*, 12, 1073–1090.

- Baas, R. (2003). On-line monitoring of protected crops and their environment: towards the speaking plant. *Proceedings of the International Fertiliser Society*, 532, 1–20.
- Bak, T., & Jakobsen, H. (2004). Agricultural robotic platform with four wheel steering for weed detection. *Biosystems Engineering*, 87(2), 125–136.
- Bin, Xia, & Da-Wen, Sun. (2002). Applications of computational fluid dynamics (CFD) in the food industry: a review. *Computers and Electronics in Agriculture*, 34, 5–24.
- Biswas, A. K. (2004). Integrated water resource management: a reassessment. *Water International*, 29(2), 248–256.
- The design and implementation strategy of the hydrology for environment*. (2000). Bonell, M., & Askew, A. (Eds.). *Life and policy (HELP) initiative. HELP task force*. Paris: UNESCO.
- Castelletti, A., & Soncini-Sessa, R. (2004). PIP: A participatory and integrated planning procedure for decision making in water resource systems. *IFAC workshop on modelling and control for participatory planning and managing water systems*.
- Copp, J. (Ed.). (2001). *The COST simulation benchmark: Description and simulator manual* (pp. 154–). Luxembourg: Office for Official Publications of the European Community, ISBN: 92-894-1658-0.
- Coyle, G., Boydell, L., & Brown, L. (1995). Home telecare for the elderly. *J. Telemed Telecare*, 1, 183–184.
- De Baerdemaeker, J. (2001). Sensors and precision farming in horticulture. *Acta Horticulturae*, 562, 19–27.
- De Baerdemaeker, J., Munack, A., Ramon, H., & Speckmann, H. (2001). Mechatronic systems, communication and control in precision agriculture. *IEEE Control System Magazine*, 21(5), 48.
- de Graaf, S. C., Stigter, J. D., & van Straten, G. (2004). Test of ACW-gradient optimisation algorithm in computation of an optimal control policy for achieving acceptable nitrate concentration of greenhouse lettuce. *Mathematical Computational and Simulations*, 65(1/2), 117–126.
- Dick, R. S., Steen, E. B., & Detmer, D. E. (Eds.). (1997). *The computer-based patient record: An essential technology for healthcare*. Washington, DC: National Academy Press.
- Earl, R., Thomas, G., & Blackmore, B. S. (2000). The potential role of GIS in autonomous field operations. *Computers and Electronics in Agriculture*, 25(1/2), 107–120.
- EC-Water Framework Directive (2000). 2000/60/EC. <http://www.europa.eu.int/eurlex/en/lif/dat/2000/en300L0060.html>.
- EC-Guidance Document no. 11 (2003). Planning process. Produced by working group 2.9. Planning Processes.
- Ell, P. J., & von Schulthess, G. K. (2002). PET/CT: A new road map. *European Journal of Nuclear Medicine*, 29, 719–720.
- Feng, D., Ho, D., Iida, H., & Chen, K. (1997). Techniques for functional imaging. In C. T. Leondes (Ed.), *Medical imaging techniques and applications* (pp. 85–145). New York: Gordon and Breach Science Publishers.
- Global Water Partnership. (2003). *Toolbox integrate water resources management*. Stockholm: GWP Secretariat.
- Griepentrog, H., Norremark, M., Nielsen, H., & Blackmore, B. S. (2003). Individual plant care in cropping systems, precision agriculture. *Papers from the 4th European Conference on Precision Agriculture* (pp. 247–251).
- Hashimoto, Y., Farkas, I., Murase, H., Carson, E. R., & Sano, A. (2004). Control approaches to bio- and ecological systems. *Control Engineering Practice*, 12(5), 595–603.
- Hucka, M. et al. (2003). The systems biology markup language (SBML): A medium for representation and exchange of biochemical network models. *Bioinformatic*, 19(4), 524–531.
- Kauffman, K. J., Pridgen, E. M., Doyle, F. J., Dhurjati, P. S., & Robinson, A. S. (2002). Decreased protein expression and intermittent recoveries in BiP levels result from cellular stress during heterologous protein expression in *Saccharomyces cerevisiae*. *Biotechnology Progress*, 18(5), 942–950.
- Kitano, H. (2002a). Systems biology: A brief overview. *Science*, 295, 1662–1664.
- Kitano, H. (2002b). Computational systems biology. *Nature*, 420, 206–210.
- Kitano, H. (2004). Cancer as a robust system. Implications for anticancer therapy. *Nature Reviews Cancer*, 4, 227–235.
- Lopes, J. A., Costa, P. F., Alves, T. P., & Menezes, J. C. (2004). Chemometrics in bioprocess engineering: process analytical technology (PAT) applications. *Chemometrics and Intelligent Laboratory Systems*, 74(2), 269–275.
- Morimoto, T., & Hashimoto, Y. (2000). An intelligent control for greenhouse automation, oriented by the concepts of SPA and SFA—an application to a post-harvest process. *Computers and Electronics in Agriculture*, 29(1/2), 3–20.
- Moshou, D., Chedad, A., Van Hirtum, A., De Baerdemaeker, J., Berckmans, D., & Ramon, H. (2001). An intelligent alarm for early detection of swine epidemics based on neural networks. *Transaction of ASAE*, 44(1), 167–174.
- Phelps, M. E. (2000). Positron emission tomography provides molecular imaging of biological processes. *PNAS*, 97, 9226–9233.
- Pons, M. N., Spanjers, H., & Jeppsson, U. (1999). Towards a benchmark for evaluating control strategies in wastewater treatment plants by simulation. *Computer Chemical Engineering (Supplement)*, S403–S406.
- Pons, M. N., Le Bonté, S., & Potier, O. (2004). Spectral analysis and fingerprinting for biomedica characterisation. *Journal of Biotechnology*, 113, 211–230.
- Reichrath, S., & Davies, T. W. (2002). Using CFD [computational fluid dynamics] to model the internal climate of greenhouses: Past, present and future. *Agronomie (France)*, 22, 3–19.
- Riley, S., Fraser, C., Donnelly, C. A., et al. (2003). Transmission dynamics of the etiological agent of SARS in Hong Kong: impact of public health interventions. *Science*, 300(5627), 1961–1966.
- Sigirmis, N., & King, R. E. (2000). Advances in greenhouse environment control. *Computers and Electronics in Agriculture*, 26(3), 217–219.
- Sigirmis, N. A., Arvanitis, K. G., & Pasgianos, G. D. (2000). Synergism of high and low level systems for the efficient management of greenhouses. *Computers and Electronics in Agriculture*, 29(1/2), 21–39.
- Sigirmis, N., Arvanitis, K. G., Pasgianos, G. D., & Ferentinos, K. (2001). Hydroponics water management using adaptive scheduling with an on-line optimiser. *Computers and Electronics in Agriculture*, 31(1), 31–46.
- Skiadas, M., Agroyiannis, B., Carson, E., Cramp, D., et al. (2002). Design, implementation and preliminary evaluation of a telemedicine system for home haemodialysis. *Journal of Telemedicine and Telecare*, 8(3), 157–164.
- Stigter, J. D., Scheerlinck, N., Nicolai, B., & van Impe, J. F. (2001). Optimal heating strategies for a convection oven. *Journal of Food Engineering*, 48(4), 335–344.
- Taylor, C. J., Chotai, A., & Young, P. C. (2000). State space control system design based on non-minimal state-variable feedback: Further generalisation and unification results. *International Journal of Control*, 73, 1329–1345.
- Tamura, H. (2005). Behavioural models for complex decision analysis. *European Journal of Operational Research*, 166(3), 655–665.
- Tortajada, C., Varis, O., & Biswas, A. K. (Eds.). (2004). *Integrated water resources management in South and South East Asia*. Oxford: Oxford University Press.
- Van Dyk, D., & Halverson, C. M. (2000). Piloting the health and home program for frail, elderly, long-term medicaid patients. Technical report. Lawrenceville, NJ: Center for Health Care Strategies.
- van Os, E. A. (2000). In *Proceedings of the 15th Workshop on Agricultural Structures and Automation S Culture Environment and System Conference IV* (pp. 81–91).
- van Straten, G., & Gieling, T. H. (2004). Ion control in closed growing systems with inert media: controller settings and modes of operation. *CIGR e-Journal* 6 14 pp. (BC 03 016).
- van Straten, G., Challa, H., & Buwalda, F. (2000). Towards user accepted optimal control of greenhouse climate. *Computers and Electronics in Agriculture*, 26(3), 221–238.
- van Straten, G., van Willigenburg, L. G., & Tap, R. F. (2002). The significance of crop co-states for receding horizon optimal control of greenhouse climate. *Control Engineering Practice*, 10(6), 625–632.
- Verdijk, G. J. C., & van Straten, G. (2002). A modelling and control structure for product quality control in climate-controlled processing of agro-material. *Control Engineering Practice*, 10(5), 533–548.
- Warner, I. (1997). Telemedicine applications for home healthcare. *Journal of Telemedicine and Telecare*, 3, 65–66.

- World Health Organisation (2003a). WHO Scientific Advisory Research Committee on Severe Acute Respiratory Syndrome (SARS): Report of the First Meeting, 20–21 October 2003. Geneva, Switzerland: World Health Organisation.
- World Health Organisation (2003b). Consensus Document on the Epidemiology of SARS. Technical report, October 2003. Geneva, Switzerland: World Health Organisation.
- World Health Organisation. (2004). *Investigation into China's recent SARS outbreak yields important lessons for global public health*. Geneva, Switzerland: World Health Organisation. http://www.wpro.who.int/sars/docs/update_07022004.asp.
- Wolf, A. (2002). *Conflict prevention and resolution in water systems*. Northampton, MA: Edward Elgar Publishing Ltd.
- Wong, K.-P. (2005). Quantitative functional imaging with positron emission tomography: principles and instrumentation. In J. S. Suri (Ed.), *Handbook of biomedical image analysis, vol. 1: Segmentation Models Part A* (pp. 57–116). New York: Kluwer Academic/Plenum.
- Young, P. C. (1998). Data-based mechanistic modelling of environmental, ecological, economic and engineering systems. *Journal of Environmental Modelling and Software*, 13, 105–122.
- Young, P. C. (2003). Top-down and data-based mechanistic modelling of rainfall-flow dynamics at the catchment scale. *Journal of Hydrological Processes*, 17, 2195–2217.
- Young, P. C., McKenna, P., & Bruun, J. (2002). Identification of nonlinear stochastic systems by state dependent parameter estimation. *International Journal of Control*, 74, 1837–1857.
- Zak, D. E., Gonye, G. E., Schwaber, J. S., & Doyle, F. J. (2003). Importance of input perturbations and stochastic gene expression in the reverse engineering of genetic regulatory networks: Insights from an identifiability analysis of an *in silico* network. *Genome Research*, 13(11), 2396–2405.

Ewart Carson is Professor of Systems Science at City University, London where he was formerly Head of the Centre for Measurement and Information in Medicine and Director of the Institute for Health Sciences. A graduate of the University of St. Andrews, Scotland, he worked for Philips before moving to City University. He holds PhD and DSc degrees of City University, is a Fellow of the IEE, InstMC, IEEE and AIMBE, and is an Honorary Member of the Royal College of Physicians (London). Areas of research interest and expertise include: modelling in physiology and medicine; modelling methodology for health resource management; clinical decision support systems—development and evaluation of model-based decision support systems; evaluation methodologies with particular application in telemedicine; and integrated policy modelling for ICT enhanced public healthcare. As a systems scientist, all this research is undertaken within a clear systemic framework.

David Dagan Feng received his ME in Electrical Engineering & Computing Science (EECS) from Shanghai JiaoTong University in 1982, MSc in Biocybernetics and PhD in Computer Science from the University of California, Los Angeles (UCLA) in 1985 and 1988, respectively. After briefly working as Assistant Professor at the University of California, Riverside, he joined the University of Sydney at the end of 1988, as Lecturer, Senior Lecturer, Reader, Professor and Head of the Department of Computer Science/School of Information Technologies. He is currently Associate Dean of the Faculty of Science at the University of Sydney; Honorary Research Consultant, Royal Prince Alfred Hospital, the largest hospital in Australia; Chair-Professor of

Information Technology, Hong Kong Polytechnic University; Advisory Professor, Shanghai JiaoTong University; Guest Professor, Northwestern Polytechnic University, Northeastern University and Tsinghua University. His research area is Biomedical & Multimedia Information Technology (BMIT). He is the Founder and Director the BMIT Research Group. He has published over 400 scholarly research papers, pioneered several new research directions, made a number of landmark contributions in his field with significant scientific impact and social benefit, and received the Crump Prize for Excellence in Medical Engineering from USA. He is a Fellow of ACS, ATSE, HKIE, IEE, and IEEE, Special Area Editor of IEEE Transactions on Information Technology in Biomedicine, and is the current Chairman of IFAC-TC-BIOMED.

Marie-Noëlle Pons received her Chemical Engineering degree from the Ecole Nationale Supérieure des Industries Chimiques, at the National Polytechnical Institute of Lorraine (INPL), in Nancy (France) in 1977. After her MSc from Northwestern University (Evanston, Illinois, USA), she obtained her PhD in Process Engineering from INPL in 1984. Since then she has pursued a research career at the Laboratory of Chemical Engineering Sciences (CNRS) in Nancy, where she is now a research senior officer and heading a research group on Process Engineering for Environment and Energy. Apart from being author and editor of several books and proceedings she published over 100 research papers related to the development of sensing techniques and control methods for chemical, biochemical and environmental processes. Since 2004 she has been chairing the IFAC TC on Biosystems and Bioprocesses.

Rodolfo Soncini-Sessa received his MCc at Politecnico di Milano, Italy in 1972. In 1977–1981 he was associate professor of *Water Management* Università della Calabria; in 1982–1985 associate professor of *Natural Resources Management* at Politecnico di Milano; in 1986–1989 full professor of *Automatic Control Theory* at Università di Brescia. Since 1990 is full professor of *Natural Resources Management* at the Politecnico di Milano, Italy. He is chair of the IFAC TC on Modelling and Control of Environmental Systems. His main research interests are in the Design of Decision Support Systems for participatory decision-making in the area of water resources. He is author of *Modelling and Control of River Quality* and of two forthcoming books on MODSS for participatory and integrated decision-making, besides many papers concerning water modelling and management.

Gerrit van Straten received his MSc at Eindhoven University (Chemical Engineering), The Netherlands. From 1972 to 1978 he was assistant professor in sanitary engineering at Twente University. In 1978–1979 he was visiting scholar and project leader at the International Institute for Applied Systems Analysis (IIASA) in Laxenburg, Austria. After this period he became Associate Professor and leader of the Environmental Systems Group at Twente. He received a PhD degree from Twente University in 1986 on a thesis 'Identification, uncertainty assessment and prediction in lake eutrophication'. In 1990, he became full professor at Wageningen University, where he leads the Systems and Control Group. Apart from being author and editor of several books and proceedings he published over 130 research papers advocating the use of systems modelling and control in a broad spectrum of applications in agriculture, food processing and environmental technology, with special emphasis on greenhouse cultivation control. He received the IFAC Outstanding Contribution Award, and is currently the Chair of the IFAC TC on Control in Agriculture.