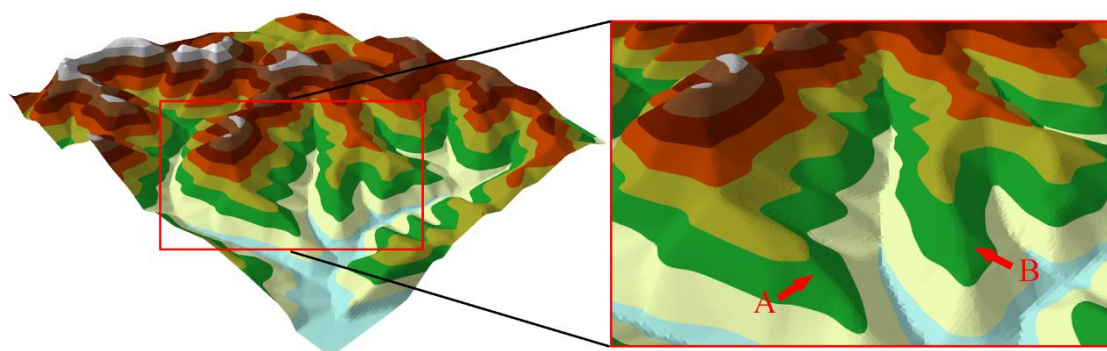
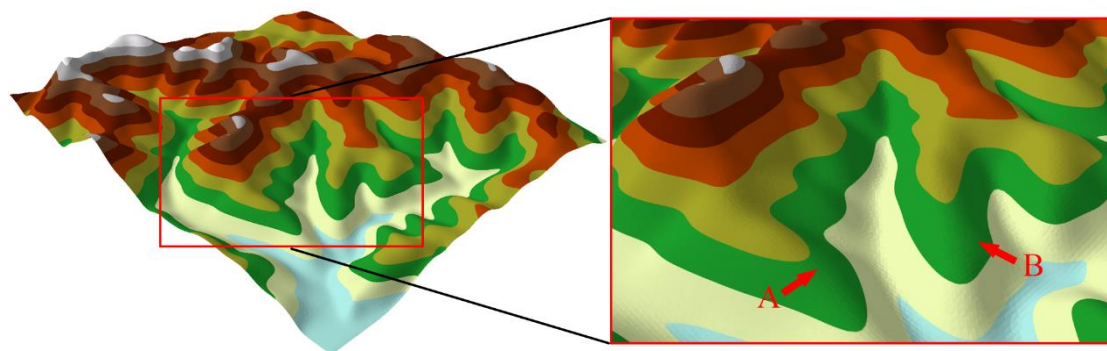


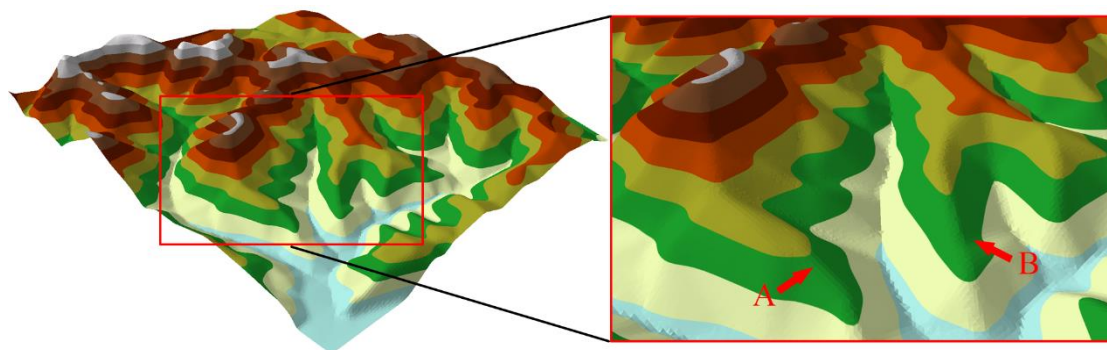
(a)



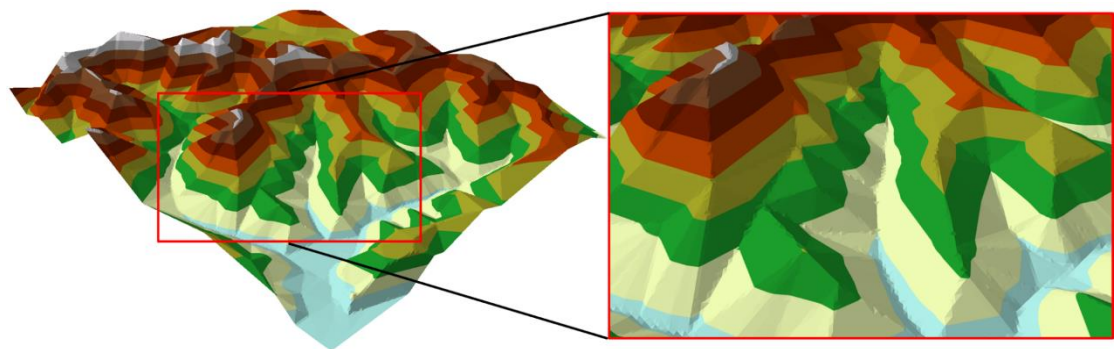
(b)



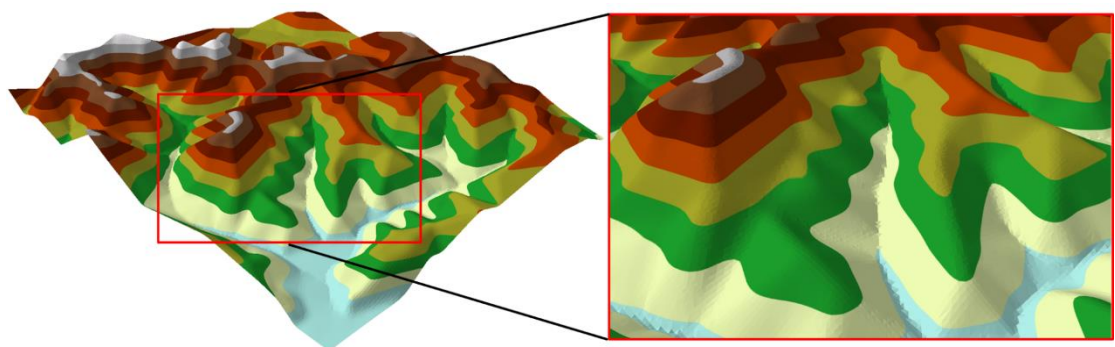
(c)



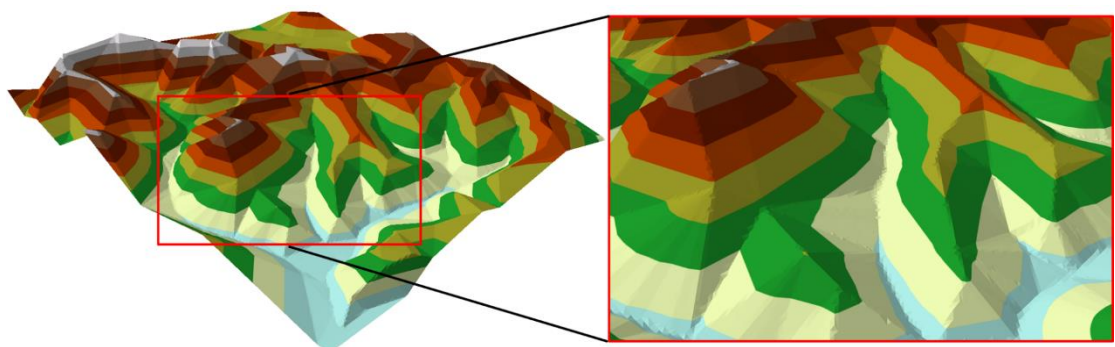
(d)



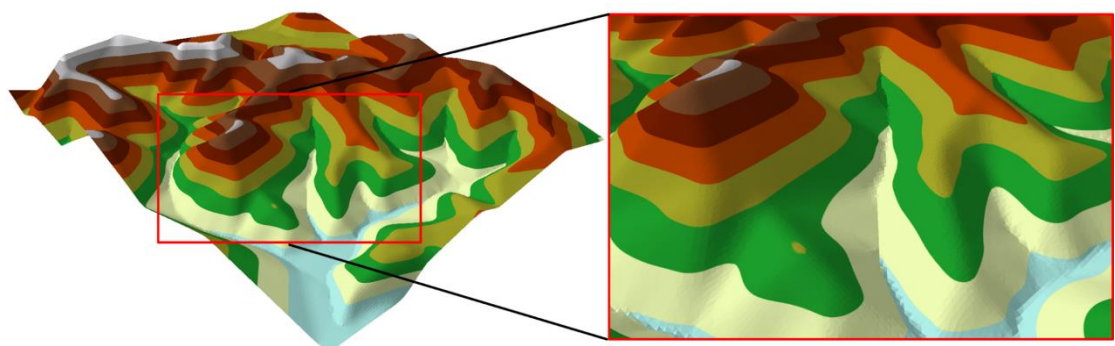
(e)



(f)



(g)



(h)

Figure 1. The comparison of the results between two other methods and our integrated method: (a) traditional filtering method, RMSE = 5, (b) our integrated method, RMSE = 5, (c) traditional

filtering method, RMSE = 6, (d) our integrated method, RMSE = 6, (e) traditional structural analysis method, maximum Z error = 30, (f) our integrated method, maximum Z error = 30, (g) traditional structural analysis method, maximum Z error = 50, (h) our integrated method, maximum Z error = 50.