

# Multi-Sensory HMI for Human-Centric Industrial Digital Twins: A 6G Vision of Future Industry

Bin Han and Hans D. Schotten  
Technische Universität Kaiserslautern  
{bin.han | schotten}@eit.uni-kl.de

**Abstract**—The next revolution of industry will turn the industries as well as the entire society into a human-centric shape. The human presence in industrial environment and the human participation in industrial processes will be magnified more than ever before. To cope with the emerging challenges raised by this revolution, 6G ambitions to bridge the three domains of digital information, physical assets and humans into one merged cyber-physical-human world. This proposes not only an unprecedented demand for digital twin solutions, but also new technical requirements. Especially, aiming at a human-centric industrial DT system, novel multi-sensory human-machine interfaces will play a key role in this paradigm shift.

**Index Terms**—Digital twins, 6G, Industry 4.0, HMI

## I. INTRODUCTION

The concept of digital twin (DT) has been attracting profound attentions recently. It was first coined in 2014 in the context of manufactory to denote a virtual equivalent that models a physical product [1]. Triggered by the vigorous development of Internet-of-Things (IoT) and cloud computing technologies, the concept has been widely evolved and generalized over the past few years. Now it is commonly used to advocate a generic creation and maintenance of a virtual counterpart (the *digital twin*) for arbitrary physical object or process (its corresponding *physical twin*, or PT). Such a DT shall be capable to represent the status, the features, and the behavior of its PT in real time with the possibly finest accuracy.

Such an image inevitably recalls the concept of cyber-physical systems (CPS), which refers to the systems that integrate physical units and processes with software and communication to provide abstractions and techniques for the integrated whole [2]. Actually, any DT system is essentially an indivisible part of a CPS, which enhances the cyber-layer performance with advanced features such as real-time synchronization and high-level information construct [3]. Sometimes, the concept of DT system is also used in a wider sense to denote a subset of CPS, which have DTs implemented on its cyber layer [4]. Regardless the accurate definition, DT is generally believed to revolutionize CPS into its next phase, flourishing and emerging into the latest Fifth Generation (5G) mobile communication systems, not only with an enhancement to all 5G use cases, but also for the conveniences it brings to the test and validation of the 5G network itself [5]. DT is also widely recognized to have a key role to play in the future Sixth Generation (6G) networks, especially in the industrial applications [7]–[10], [19].

Despite the immature conceptualization of 6G, and the debate among different technical proposals, there is one feature

of 6G that we know for sure to distinguish it from 5G: the human-centric orientation [8], [11]–[14].

So far till now, the prosperous efforts in DT technologies have been focusing on - as its current definition suggests - bridging the gap between the physical world and the digital world, and have made a great achievement. To pave the way towards a human-centric 6G system, however, we are now challenged by the barriers between the cyber-physical world and the biological world. Reliable and affordable solutions are called for, to enable not only an immersive multi-sense human perception of the virtual world, but also an inclusion of human beings into the objective field of digital twinning.

In this survey, we outline the role of DT in future human-centric industrial 6G networking scenarios. As our main contribution that distinguishes this work from existing surveys on DT such as [15] and [17]–[20], we focus on the identification of new challenges induced by the presence and participation of human in industry, the technical requirements and potential solutions to them. We also review the enabling human-machine interface (HMI) technologies, trying to shed the light on possible technical routes to break the human-CPS barriers.

The remainder of this paper is organized as follows: In Sec. II we throw a quick glance at the research trend, the application fields, and the use cases of DT. First in a generic view, and then in the context of future industry, identifying the gaps that cannot be fully closed by conventional 5G solutions but have to rely on 6G. Realizing the essential presence of human in the Industry 4.0 (I4.0) scenario of 6G era, in Sec. III we try to identify the challenges of human-centric DT services, and the technical requirements that must be fulfilled. To overcome these challenges and seamlessly integrate the human participators into the DT-driven industrial practices, in Sec. IV we review the cutting-edge HMI technologies, including human mental status sensing and multi-sensory feedback solutions, attempting to reveal some potential directions for future DT research. To the end, we close the paper with our conclusions in Sec. V.

## II. DIGITAL TWIN FOR 6G-EMPOWERED I4.0

### A. Digital Twin: Concepts and Applications

Research interest on the topic of DT has been explosively increasing over the past decade, spreading into various industrial branches, mainly including aviation, healthcare, and manufacturing. As a comprehensive survey [15] shows, the early works were dominantly concentrating on aviation, where the

expense of field experiments usually goes beyond affordability, which has encouraged the first burst of research efforts on DT. Since 2016, however, the focus has overwhelmingly shifted to the applications of manufacturing and precision medicine.

Despite the common vague opinion that each DT represents its corresponding PT, a universal agreement on the definition of DT is still absent. As pointed out by [15]: out of the 75 papers it reviewed, 44 did not give any explicit definition for the concept, with the rest 31 providing 29 different versions. Taking one more step beyond this analysis, we can further observe that among the 31 papers that explicitly define DT, 23 are focusing on the field of smart manufacturing, but highlighting various key points including integrated system, cyber-cloning, information connections, comprehensive digital construct, simulation test, and virtual replica. Through this superficial mist of a divergence (or even chaos) in opinions about the very same term, we see in DT a wild force driving the modern industry, especially its manufacturing sector, into the new era of future industry. In this paper, we generally refer as DT *a digital replica of a living or non-living entity, whose virtual representation reflects all the relevant dynamics, characteristics, critical components and important properties of the original entity throughout its life cycle* [21].

### B. The 6G Ambition of DT-Driven Industry

I4.0, conceptualized in 2011 [16], seeks to digitize and automate the traditional manufacturing and industrial practices with modern smart technologies. Identifying I4.0 as one of its key deployment scenarios, 5G has introduced a gallery of new use cases and technologies for support: the massive machine-type communications (mMTC) to enable dense IoT connections, the ultra reliable low-latency communications (URLLC) to guarantee timely and reliable data synchronization, the multi-access edge computing (MEC) to improve accessibility to artificial intelligence, the non-public network architecture to strengthen the security, and the vertical model to deliver heterogeneous services that are tailored to specific industry.

Now, while the deployment of 5G is rapidly spreading over the world, new ambition towards the next generation mobile networks for 2030s have already motivated up-springing research efforts, which aim at pushing everything beyond what 5G promises - and I4.0 cannot be missed. A new concept called Society 5.0 was proposed by the government of Japan, which extends the boarder of Industry 4.0 by putting human into the loop of CPS [22]. Coinciding with each other on the human-centric view, Society 5.0 and 6G turn out to be a match made in heaven [23], leading to a pervasive CPS environment with ubiquitous connectivity - not only between everybody, between everything, but also between people and things. This implies to introduce a plethora of emerging human-centric industrial use cases to further enhance I4.0. According to the on-going European 6G flagship project *Hexa-X* [8], [21], 6G use cases can be clustered into several use case families:

1) *Massive twinning*: where the concept of DT is more fundamentally applied towards a full digital representation, extending the objective of DT to the entire environment,

including both the physical and human worlds. This use case family contains not only new DT use cases such as immersive smart city and sustainable food production, but also a deeper integration of DT to the manufacturing environment. The mMTC scenario defined by 5G has established a solid basis of dense connectivity for this ambition. However, to practically realize the paradigm of massive twinning, it still lacks not only a richness of computing power at the network edge, but also reliable solutions to provision huge amount of data that drives the modeling, and global coverage to guarantee the continuous synchronization between DTs and their physical twins. These challenges cannot be fully addressed by the present 5G systems, but looking forwarding to 6G enablers.

2) *Immersive telepresence for enhanced interactions*: which enables humans to interact with all senses anytime anywhere, either with each other, with physical things, or with digital objects. This use case family opens a door to the future life, where the barrier of physical distance is completely removed for interactions in all fields of human society. The cyber-physical-human worlds will be fully merged by means of mixed reality (MR) and holographic telepresence technologies. In the industrial scenario, multi-sensory tele-interaction and telecollaboration will reshape the current I4.0 vision, which is based on 5G that cannot well support industrial MR application due to its limited throughput in URLLC and the lack of multi-sensory user interface.

3) *From robots to cobots*: differing from traditional robotic systems that are based on the command-and-control logos, future collaborative robots, a.k.a. “cobots”, shall have relations not only with each other but also with humans. This new symbiotic relation will allow cobot systems to perform complex tasks in a collaborative and cognitive fashion. In the consumer electronics market, companion cobots are expected to better understand and serve the human needs than the off-the-shelf robots today; combined with the emerging AI-as-a-Service (AIaaS) [24], personal AI agents that accompany with humans as autonomous working assistants or even equal partners are appearing no more out of reach. In the industrial environment, the flexible and intelligent collaboration among cobots and humans exhibits to us a bright prospect of flexible manufacturing. However, between this ambition and the state of the art, there is still a wide technical gap of unperceivable sensing and wireless AIaaS remaining open.

4) *Local trust zones for human and machine*: which aims at protecting privacy by means of dynamically updating the transparency and accessibility of sensitive information that are specific about individuals, machines, or independent networks, w.r.t. use requirements and privacy policies. It further evolves the concept of *security trust zone (STZ)*, which was proposed in 5G regarding cellular topologies [25], [26], to make it apt to the beyond-cellular network topology that is not supported by 5G, e.g. the “Network of Networks”. It grants trustworthiness to new use cases that are dense of sensitive information and rely on flexible network topology, such as precision healthcare, smart cities, public protection and disaster relief (PPDR), and automatic public security. In the industrial scenario, sensor in-

frastructure webs and low-power micro-networks will become the key use cases for production and manufacturing.

5) *Sustainable development*: which attempts to address the social concerns about the sustainability of our environment and society, which has been globally growing over the past years, and especially intensified by the extreme weather events and disasters in 2021 (such as the European and Chinese floods, and the heats and wildfires in North America). Concerning more about the environmental and climate impact than 5G does, 6G takes sustainability as one of its key values. It is supposed to contribute to sustainability with new use cases that emphasize dematerialization, efficient resource usage, and energy-efficient optimizations, which all count in the industrial scenario. A deeper and meticulous understanding to the physical processes in industry is required hereby to improve the sustainability in a targeted manner.

In summary, we see in every 6G use case family a significant contribution to further evolve the I4.0. Each of them relies on an accurate, dynamic, real-time, and comprehensive modeling of all things, humans, and the environment - i.e. the upcoming 6G evolution to future industry is deeply rooted in the deployment of human-centric DT.

### III. DT WITH HUMAN PRESENCE IN FUTURE INDUSTRY: CHALLENGES AND REQUIREMENTS

#### A. Challenges by Human Existence in Industrial Environment

These ambitious visions on future 6G-based industry are outlining an industrial DT ecosystem, where the human, equipment, as well as their DTs, converge and collaborate with each other, as illustrated in Fig. 1. Staying at the center of this ecosystem, humans rely on HMI technologies to interact with the other worlds. So far, the direct interaction between human and physical equipment has been well supported by conventional technologies. However, upon the communication between humans and various DTs in the digital world, novel HMI solutions are required to efficiently address two classes of industrial challenges: the MR-collaboration and the human-disturbance protection.

On the one hand, the conscious participation of humans in industrial processes (such as controlling, manufacturing, and transporting) requires a dependable human-machine collaboration, both in onsite presence and over remote connection. This implies a huge demand in MR solutions based on multi-sensory interface. The traditional HMIs, which are dominantly based on mouse-keyboard-screen (MKS) and audio devices, shall be extended with holographic vision, haptic feedback, and unperceivable sensing, so as to allow human users to immersively interact with the cyber world, or interact with physical objects or other humans in telepresence over the DTs.

On the other hand, with their unpredictable actions, humans in industrial environment may usually, if not always, lead to disturbances or unexpected risky events. For example, pedestrians wandering in a factory can block the radio propagation in spectral bands of millimeter wave or higher frequencies, and

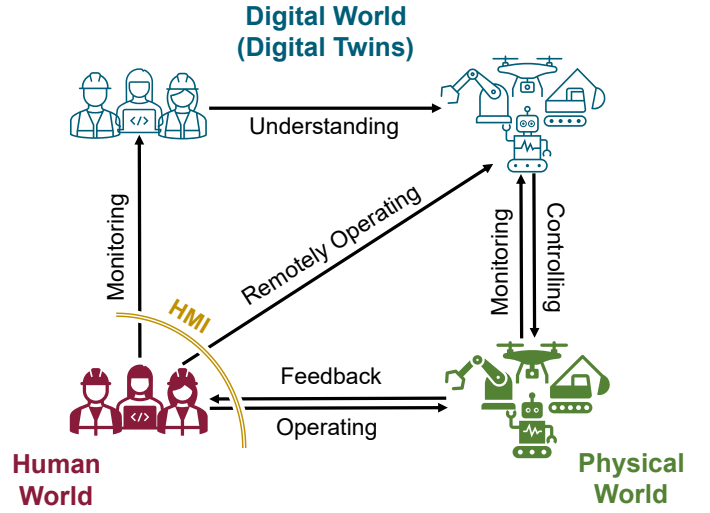


Figure 1: Information flow across the “three worlds” in future human-centric industry empowered by 6G DT. The arrows imply the directions of information flow.

therewith cause link failures of the wireless connected devices. For another instance, a human participator in industrial process may suffer from abnormal conditions such as sickness, fatigue, and strong emotions, which all reduce her level of concentration and comprehension, and thereby increase the risk of inappropriate operations that cause failures or dangers. To control and manage these risks raised by human existence, a timely monitoring of the human status - both physical and mental - and a thorough understanding of the complex human behavior, which are not sufficiently supported by conventional technologies, will be essential for the future industry.

#### B. Technical Requirements for Novel HMI Solutions

Indeed, the rapid development of HMI technologies have never been halted since the computer boom in the 1980’s. A large variety of solutions have been invented, ranging from the gyroscope-accelerometer-based motion technologies that are already commonplace nowadays, to the brain computer interfacing (BCI) solutions that are well demonstrated [27] but yet sounding science-fictional. However, not all of them are promising for the 6G-based future industry. More specifically, we identify the following technical requirements as essential for any 6G-HMI to drive the next industrial revolution.

1) *Safety and health-friendliness*: as a human-centric system, 6G takes the safety and health of humans as its core value and first priority. Axiomatically, any technology with potential risk of damaging the health of users by itself shall never be considered before being eventually verified as harmless. In addition to that, due to the particularity of industrial environments, every candidate HMI solution shall be evaluated in context of the specific use scenario, to make sure that it does not significantly distract or restrict the user from his main task.

2) *Comfort and convenience*: beyond the basic requirements of health and safety, user’s comfort and convenience shall be taken into account. This generally requires a compact-

ness of the essential hardware and rejects most (if not all) invasive interfaces. For example, to recognize facial expressions and gaits, graphic solutions based on cameras [28], [29] are preferred in this sense than solutions based on electromyogram (EMG) signals that can only be measured with electrodes [30], [31]; should the EMG signals be measured, surface electrodes are much preferred than needle electrodes.

3) *Dependability*: for applications intolerant to outages, 6G intends to deliver guarantees for multiple end-to-end (E2E) performances, such as achievable data rate, maximum E2E service latency, bounded jitter, and E2E packet reliability with robust mobility. This is known as the concept of *dependability* [8], which is especially critical for use cases such as human-machine interaction and automation. As an essential stage of the E2E service chain in 6G-driven industrial DT, the HMI must cope with these requirements.

4) *Electromagnetic Compatibility*: massive twinning in industrial scenario inevitably leads to a complex electromagnetic environment, where strong interference and noise may probably occur, sometimes even randomly and without predictable pattern. The HMI solution therefore must be electromagnetically robust to ensure its reliability. On the other hand, it shall not generate strong electromagnetic leakages that interfere with the wireless channels or other devices.

5) *Sustainability*: 6G takes sustainability also as one of its key values. This does not only mean that 6G shall foster improved sustainability in various societal domains, but also implies that 6G itself must be made sustainable. Unsustainable technologies, which depend on nonrenewable resources, use pollutive materials, or generate high CO<sub>2</sub> submission, shall not be adopted in 6G - with no exception for the HMI.

6) *Security and privacy*: With its ubiquitous coverage and massive twinning, 6G will connect everything and everybody with each other, carrying massive data to comprehensively describe them in more details than ever before. However, it also raises security and privacy concerns to an unprecedented level. On the one hand, enhanced security measures must be taken to guard the user data from unauthorized access and malicious operation by the non-trusted. On the other hand, the user data also must be protected from inappropriate exploitation by the trusted such like the industrial verticals. For instance, the General Data Protection Regulation (GDPR) of European Union prohibits a handful kinds of data processing that can leak the user identity or lead to discrimination, with only a few exceptions under very strict rules. How to exploit human-specific data in DT systems (especially those with DTs of humans), while staying aligned with such regulations, must be taken into consideration when designing the HMI.

#### IV. HMIS FOR HUMAN-CENTRIC DT: AN OVERVIEW

Like we have discussed above, technical challenges for future industrial DT systems with human presence are identified in both aspects of HMI: the sensorologic one of sensing and monitoring of human status from the machine side, as well as the perceptual one of generating feedback in MR environment to humans. On the sensorologic side, mature solutions to

sense and monitor the mobility and physical status (e.g. body temperature, pulse rate, etc.) have been well developed and widely applied in commercial personal devices over the past decade, while the sensing of mental status is remaining as an open issue. On the perceptual side, conventional technologies are still generally relying on visual and auditory senses, leaving the other human senses (tactile, olfactory, and gustatory) barely exploited. To inspire innovations towards an immersive human-centric industrial DT, we give here an overview to the potential technical enablers of human mental status sensing and multi-sensory feedback.

##### A. Sensing the Mental Status

Industrial processes can be greatly impacted by the mental status of the human participators, not only regarding the quality of output/product, but more importantly, regarding the safety of system and humans themselves. The most critical mental signals to be measured include:

1) *Comprehension*: in industrial scenarios, especially regarding human-machine collaboration, it is usually important for the intelligent systems to confirm that the human has perceived and understood the critical information it provides, such like a notification, an inquiry, an instruction, or a warning.

2) *Concentration*: distraction from the task in processing in industrial environment can easily lead to operation failures, which may cause serious losses and dangers.

3) *Fatigue*: fatigue generally reduces the level of concentration. Besides, it also weakens human's strength, agility, precision, and endurance in physical tasks; and degrades the human cognitive abilities in all aspects. In addition, continuous working under fatigue is likely to damage the health.

4) *Emotion*: negative emotions such as depression, stress, anxiety and anger can regularly lead to distraction, and accelerates the increase of fatigue. With the significant impact on the human behavior pattern, extreme emotions may also cause failures of human-related prediction algorithms.

Since direct sensing of the mental status is impossible, people have developed a handful of indirect approaches to estimate it from measurable physical features. Such physical features that are typically taken as indicators include:

1) *Speech voice*: emotions and fatigue can significantly change the tone, speed, volume and timbre of one's speech voice. Hence, they can be detected through vocal analysis. However, to continuously monitor the mental status of a person in this way, the person has to keep talking, which is not universally possible. Nevertheless, in some certain scenarios where the vocal signal is available, e.g. when vocal commands are used to control the intelligent system, voice-based mental status estimation can be well integrated.

2) *Facial expressions*: rich information about one's mental status can be mined from her facial expressions and microexpressions, which has been exploited by human beings for thousands of centuries as most classical and reliable approach of emotion recognition. This approach requires images or videos that capture most facial areas - in sufficiently high

resolution and ideally in the front view - of the person under analysis, which are easy to obtain in most industrial scenarios.

3) *Galvanic skin response signal*: shifting in the intensity of emotional states can cause effects in human's eccrine sweat gland activity, which change the conductance of skin. Such effects are almost immediate to the emotional arousal, and easy to measure with wearable devices.

4) *Eye movements*: eye movement have been used since long as a psychological signal for emotion recognition. It can be captured either from video by cameras and eye trackers, or from electrooculogram signals by specialized electrodes. Both can be easily integrated into wearable devices such like VR/AR headsets.

5) *Bioelectric signals*: there are a variety of bioelectric signals widely used in psychological and clinical studies to identify human brain activities and mental status, common examples include electroencephalogram (EEG), electromyogram (EMG), electrooculogram (EOG), and electrocardiogram (ECG). They usually need to be sensed with specialized electrodes, which are not always convenient and comfort to carry while working in the industrial environment.

Some examples of mental status sensing are listed in Tab. I.

Table I: Examples of mental status estimation with novel HMIs

Mental signal	Physical feature	Literature
Comprehension	Facial expression	[32]
	Galvanic skin response	[33]
	Eye movements	[34]
	Bioelectric signals	[35]
Concentration	Facial expression	[36], [37]
	Bioelectric signals	[38]
Fatigue	Speech voice	[39]
	Facial expression	[40]
	Galvanic skin response	[41]
	Eye movements	[42]
	Bioelectric signals	[43]
Emotion	Speech voice	[44]
	Facial expression	[45]
	Galvanic skin response	[46], [47]
	Eye movements	[48]
	Bioelectric signals	[49]

## B. Multi-Sensory Feedback

Since vision and hearing are the most important sense of humans, visual and auditory user interfaces (UIs) will still indefinitely remain the dominating approach for machines sending information to humans. However, the traditional visual/auditory UIs based on text, two-dimensional graphics and audio cannot fulfil the requirements of future industrial DT applications like MR, immersive telepresence, and human-robot collaboration, and therefore must be extended.

1) *Holographic vision*: As the successor of text, image, video and 3D video, holography will be the fifth generation of visual user interface technology. Allowing such a visualization of DT, that no clear boundary is to be sensed between the virtual objects and the real physical environment, holographic vision plays a key role in the future DT applications including MR, immersive telepresence, and telecollaboration.

There have been already commercial holographic vision products released, which have also been applied in research works, such as the Microsoft HoloLens 2 [50]. They have been proven sufficient as solutions to optically deliver MR. To achieve the target of teleinteraction and telecollaboration, however, there are still two main challenges to overcome. First, the closed-loop latency must be minimized, taking into account the computing delay to update the holographic model of DT regarding human actions (e.g. pressing a button on the holographic projection of a machine), so as to realize a smooth teleinteraction experience. Second, when multiple users are involved with, e.g. in telecollaboration, the holographic image/video must be highly synchronized for all users. Both challenges are related to the research areas of URLLC, information freshness, and time-sensitive networking (TSN).

2) *Tactile*: Alongside with vision, the mostly used human sense, there is the tactile that is used by us in every physical contact of ours with the environment or any object. Being partly processed by the spinal cord instead of the brain, tactile is also the most agile sense of humans, responding significantly faster than the visual and auditory senses [51]. Since the concept of *Tactile Internet* being proposed in 2014 [52], the telecommunication community has been struggling to achieve the target of  $\leq 10\text{ms}$  E2E latency, which is the limit of tactile cognition for humans. In the wireless field, the 5G URLLC use case was proposed to address this issue, breeding numerous research works over the past years.

Despite the significant progress in evolving the network infrastructure to support tactile internet, haptic solutions to generate agile and accurate tactile feedback are still far behind the requirements of future industry. The haptic interface is a critical enabler for industrial DT applications, not only because it enriches the user experience of sensing virtual objects with tactile, but also as a necessary condition of reliable motion-capture-based remote operation. Only with an accurate and fast haptic stimulus that vividly simulates the weight, resistance and hardness of physical objects, it becomes possible for a human user to appropriately exert and accomplish high-precision tasks such like surgery over teleinteraction.

Traditional solutions to provide tactile feedback are mostly *extrinsic*, i.e. they rely on instrumented environment with active devices, such like vibrators-embedded steering wheels for virtual automotive driving [53], and the vibration-based tactile simulation of physical keyboard on [54]. Such solutions are generally limited to local area and specific use scenarios. To enable tactile feedback in immersive and ubiquitous teleinteraction with arbitrary object, the *intrinsic* solutions try to augment the user instead of the environment, and alter the user's tactile perception. This can be typically realized by wearable haptic devices, or through direct stimulation to the user's neurosensory mechanism [55]. Recently, there has been a new class of methods developed, which use drones to flexibly generate tactile feedbacks [56], [57].

3) *Other senses*: The senses of smell and taste may also be useful in some industrial scenarios, but the physicalization of them remains a technical challenge [58].

4) *Spinal cord and brain stimulation*: Besides stimulating the natural human perception system, it is also possible to generate artificial sensory feedback by directly stimulating the human neural system, i.e. spinal cord and brain. This topic has been studied since long in the field of neuroscience, the results have been so far mainly applied in medical treatments and devices, such as prosthetic implants that can simulate tactile sense for amputees [59]. This type of approaches can be outstanding in the effectiveness of triggering sense in flexible environments, but may suffer from high implementation cost and raise more concerns in human safety. Recently, it has become an emerging topic of combining such technologies with the future 6G wireless solution towards a so-called *brain-type communications* scenario [60].

5) *Synesthesia*: Additionally, in certain scenarios it may be useful to leverage the synesthetic phenomena, wherewith one sense can be triggered by another that is easier to physicalize. For example, it has been reported that by watching/listening to certain type of videos/audios, it triggers a special gentle-touch-alike tactile sense accompanied by a deep relaxation and pleasure, which is known as the autonomous sensory meridian response (ASMR) [61]. Such phenomena are suggesting a new class of solutions to resolve/soften the negative mental status we discussed in Sec. IV-A. To achieve this, deep study is still required to setup a reliable model of the human sensory system, where DT can also play an important role.

## V. CONCLUSION

In this paper we have provided our vision on the role played by DT in future 6G-empowered industry. We have identified the gaps, technical requirements and challenges for novel HMI solutions in such industrial DT applications, taking a human-centric point of view. We have also surveyed the main potential technology routes and candidate solutions, hoping to inspire interested peers towards the next breakthrough in this field.

## ACKNOWLEDGEMENT

This work has been partly funded by the European Commission through the H2020 project Hexa-X (GA no. 101015956).

## REFERENCES

- [1] Michael Grieves, "Digital twin: manufacturing excellence through virtual factory replication," white paper, March 2014.
- [2] J. Shi, J. Wan, et al., "A survey of cyber-physical systems," in *2011 International Conference on Wireless Communications and Signal Processing (WCSP)*, 2011, pp. 1–6.
- [3] K. Josifovska, E. Yigitbas, and G. Engels, "Reference framework for digital twins within cyber-physical systems," in *2019 IEEE/ACM 5th International Workshop on Software Engineering for Smart Cyber-Physical Systems (SESCPS)*, 2019, pp. 25–31.
- [4] C. Kan and C. J. Anumba, "Digital twins as the next phase of cyber-physical systems in construction," in *Computing in Civil Engineering 2019: Data, Sensing, and Analytics*, Reston, VA: American Society of Civil Engineers, 2019, pp. 256–264.
- [5] H. X. Nguyen, R. Trestian, et al., "Digital twin for 5G and beyond," in *IEEE Communications Magazine*, 59.2 (2021), 10–15.
- [6] Y. Wu, K. Zhang, and Y. Zhang, "Digital Twin Networks: A Survey," in *IEEE Internet of Things Journal*, 8.18 (2021), 13789–13804.
- [7] H. Viswanathan and P. E. Mogensen, "Communications in the 6G Era," in *IEEE Access*, 8 (2020), 57063–57074.
- [8] M. A. Uusitalo et al., "Hexa-X The European 6G flagship project," in *2021 Joint European Conference on Networks and Communications & 6G Summit (EuCNC/6G Summit)*, 2021, pp. 580–585.
- [9] M. A. Uusitalo et al., "6G Vision, Value, Use Cases and Technologies From European 6G Flagship Project Hexa-X," in *IEEE Access*, 9 (2021), 160004–160020.
- [10] AI@EDGE, "D2.1: Use cases, requirements, and preliminary system architecture," June 2021. [https://aiatedge.eu/wp-content/uploads/2021/09/AI@EDGE\\_D2.1\\_Use-cases-requirements-and-preliminary-system-architecture\\_v1.0-1.pdf](https://aiatedge.eu/wp-content/uploads/2021/09/AI@EDGE_D2.1_Use-cases-requirements-and-preliminary-system-architecture_v1.0-1.pdf), accessed 21.01.2022.
- [11] S. Dang, O. Amin, et al., "What should 6G be?," in *Nature Electronics*, vol. 3, pp. 20–29, 2020.
- [12] W. Saad, M. Bennis, and M. Chen, "A Vision of 6G wireless systems: Applications, trends, technologies, and open research problems," in *IEEE Network*, 34.3 (2020), pp. 134–142.
- [13] Z. Zhang et al., "6G wireless networks: Vision, requirements, architecture, and key technologies," in *IEEE Vehicular Technology Magazine*, 14.3 (2019), 28–41.
- [14] L. U. Khan, I. Yaqoob, et al., "6G wireless systems: A vision, architectural elements, and future directions," in *IEEE Access*, 8 (2020), 147029–147044.
- [15] B. R. Barricelli, E. Casiraghi and D. Fogli, "A survey on digital twin: Definitions, characteristics, applications, and design implications," in *IEEE Access*, vol. 7, pp. 167653–167671, 2019.
- [16] H. Kagermann, W. D. Lukas, and W. Wahlster, "Industrie 4.0: Mit dem Internet der Dinge auf dem Weg zur 4. industriellen Revolution," in *VDI Nachrichten*, vol. 13, issue 1, pp. 2–3, 2011.
- [17] K. Y. H. Lim, Z. Pai, and C. H. Chen, "A state-of-the-art survey of digital twin: Techniques, engineering product lifecycle management and business innovation perspectives," in *Journal of Intelligent Manufacturing*, 31.6 (2020), 1313–1337.
- [18] R. Minerva, G. M. Lee, and N. Crespi, "Digital twin in the IoT context: a survey on technical features, scenarios, and architectural models," in *Proceedings of the IEEE*, 108.10 (2020), 1785–1824.
- [19] Y. Wu, K. Zhang, and Y. Zhang, "Digital twin networks: A survey," in *IEEE Internet of Things Journal*, 8.18 (2021), 13789–13804.
- [20] J. Wilhelm, T. Beincke, and M. Freitag, "Improving human-machine interaction with a digital twin," in *International Conference on Dynamics in Logistics*, pp. 527–540, Springer, Cham, 2020.
- [21] G. D'Aria et al., "Expanded 6G vision, use cases and societal values—including aspects of sustainability, security and spectrum," technical report, Hexa-X Project, April 2021.
- [22] M. Fukuyama, "Society 5.0: Aiming for a new human-centered society," in *Japan Spotlight*, 1 (2018), 47–50.
- [23] M. Maier, "6G as if people mattered: From Industry 4.0 toward Society 5.0 : (invited paper)," in *2021 International Conference on Computer Communications and Networks (ICCCN)*, 2021, pp. 1–10.
- [24] S. Lins, K. D. Pandl, et al., "Artificial intelligence as a service," in *Business & Information Systems Engineering*, 63.4 (2021), 441–456.
- [25] B. Han, S. Wong, et al., "Security Trust Zone in 5G networks," in *2017 24th International Conference on Telecommunications (ICT)*, 2017, pp. 1–5.
- [26] D. Michalopoulos et al., "Deliverable D3.1 - Initial resilience and security analysis," technical report, 5G MoNArch Project, June 2018.
- [27] J. Cannan and H. Hu, *Human-Machine Interaction (HMI): A Survey*, Technical Report: CES-508, University of Essex, 2011, pp. 1–16.
- [28] W. Kusakunniran, Q. Wu, et al., "Automatic gait recognition using weighted binary pattern on video," in *2009 Sixth IEEE International Conference on Advanced Video and Signal Based Surveillance*, 2009, pp. 49–54.
- [29] I. Cohen, N. Sebe, et al., "Facial expression recognition from video sequences: Temporal and static modeling," in *Computer Vision and Image Understanding*, 91.1–2, (2003), 160–187.
- [30] D. T. H. Lai, R. K. Begg and M. Palaniswami, "Computational intelligence in gait research: A perspective on current applications and future challenges," in *IEEE Transactions on Information Technology in Biomedicine*, 13.5 (2009), 687–702.
- [31] A. Gruebler and K. Suzuki, "Design of a wearable device for reading positive expressions from facial EMG signals," in *IEEE Transactions on Affective Computing*, 5.3 (2014), 227–237.
- [32] C. Turan, Y. Wang, et al., "Facial expressions of sentence comprehension," in *2018 IEEE 23rd International Conference on Digital Signal Processing (DSP)*, 2018, pp. 1–5.

- [33] S. Bottos and B. Balasingam, "Tracking the progression of reading using eye-gaze point measurements and hidden markov models," in *IEEE Transactions on Instrumentation and Measurement*, 69.10 (2020), 7857–7868.
- [34] J. Li, G. Ngai, et al., "Your eye tells how well you comprehend," in *2016 IEEE 40th Annual Computer Software and Applications Conference (COMPSAC)*, 2016, pp. 503–508.
- [35] Z. Rusák, N. van de Water, et al., "Smart reading aid for detecting problems with reading fluency and comprehension," in *Proceedings of the ASME 2016 International Design Engineering Technical Conferences and Computers and Information in Engineering Conference*, Charlotte, North Carolina, USA, August 21–24, 2016. V01BT02A039. ASME.
- [36] P. Sharma, M. Esengönül, et al., "Student concentration evaluation index in an E-learning context using facial emotion analysis," in *International Conference on Technology and Innovation in Learning, Teaching and Education 2018*, 2019, pp. 529–538.
- [37] K. Takahashi, K. Yamada, et al., "Method of detecting concentration on cellular phone call from facial expression change by image processing," in *2005 IEEE International Conference on Systems, Man and Cybernetics*, 2005, pp. 3444–3448.
- [38] H. Kaji, H. Iizuka, and M. Sugiyama, "ECG-based concentration recognition with multi-task regression," in *IEEE Transactions on Biomedical Engineering*, 66.1 (2019), 101–110.
- [39] H. P. Greeley, E. Friets, et al., "Detecting fatigue from voice using speech recognition," in *2006 IEEE International Symposium on Signal Processing and Information Technology*, 2006, pp. 567–571.
- [40] S. A. Khan, S. Hussain, et al., "An effective framework for driver fatigue recognition based on intelligent facial expressions analysis," in *IEEE Access*, 6 (2018), 67459–67468.
- [41] G. Yang, Y. Lin and P. Bhattacharya, "A driver fatigue recognition model using fusion of multiple features," in *2005 IEEE International Conference on Systems, Man and Cybernetics*, 2005, pp. 1777–1784 vol. 2.
- [42] H. Singh, J. S. Bhatia and J. Kaur, "Eye tracking based driver fatigue monitoring and warning system," *India International Conference on Power Electronics 2010 (IICPE2010)*, 2011, pp. 1–6.
- [43] M. Kołodziej, et al., "Fatigue detection caused by office work with the use of EOG signal," in *IEEE Sensors Journal*, 20.24 (2020), 15213–15223.
- [44] Z. Huang, M. Dong, et al., "Speech emotion recognition using CNN," in *Proceedings of the 22nd ACM international conference on Multimedia (MM '14)*, ACM, 2014, pp. 801–804.
- [45] Z. Liu et al., "A facial expression emotion recognition based human-robot interaction system," in *IEEE/CAA Journal of Automatica Sinica*, 4. 4 (2017), 668–676.
- [46] M. Liu, D. Fan, et al., "Human Emotion Recognition Based on Galvanic Skin Response Signal Feature Selection and SVM," in *2016 International Conference on Smart City and Systems Engineering (ICSCSE)*, 2016, pp. 157–160.
- [47] I. Y. Susanto, T. Pan, et al., "Emotion recognition from galvanic skin response signal based on deep hybrid neural networks," in *Proceedings of the 2020 International Conference on Multimedia Retrieval ICMR '20*, ACM, 2020, pp. 341–345.
- [48] R. S. Soundariya and R. Renuga, "Eye movement based emotion recognition using electrooculography," in *2017 Innovations in Power and Advanced Computing Technologies (i-PACT)*, 2017, pp. 1–5.
- [49] R. Subramanian, J. Wache, et al., "ASCERTAIN: Emotion and personality recognition using commercial sensors," in *IEEE Transactions on Affective Computing*, 9.2 (2018), 147–160.
- [50] D. Ungureanu, F. Bogo, et al., "HoloLens 2 research mode as a tool for computer vision research," arXiv:2008.11239 [cs.CV].
- [51] A. W. Ng and A. H. Chan, "Finger response times to visual, auditory and tactile modality stimuli," in *Proceedings of the international multi-conference of engineers and computer scientists*, 2 (2012), 1449–1454.
- [52] G. P. Fettweis, "The tactile internet: Applications and challenges," in *IEEE Vehicular Technology Magazine*, 9.1 (2014), 64–70.
- [53] L. Diwischek and J. Lisseman, "Tactile feedback for virtual automotive steering wheel switches. in *Proceedings of the 7th International Conference on Automotive User Interfaces and Interactive Vehicular Applications (AutomotiveUI '15)*, pp. 31–38, 2015.
- [54] S. Brewster, F. Chohan, and L. Brown, "Tactile feedback for mobile interactions," in *Proceedings of the SIGCHI Conference on Human Factors in Computing Systems (CHI '07)*, pp. 159–162, 2007.
- [55] O. Bau and I. Poupyrev, "REVEL: Tactile feedback technology for augmented reality," in *ACM Transactions on Graphics*, 31.4 (2012), pp. 1–11.
- [56] M. Abdullah, M. Kim, et al., "HapticDrone: An encountered-type kinesthetic haptic interface with controllable force feedback: Initial example for 1D haptic feedback," in *Adjunct Publication of the 30th Annual ACM Symposium on User Interface Software and Technology (UIST '17)*, pp. 115–117, 2017.
- [57] P. Knierim, T. Kosch, et al., "Tactile drones - Providing immersive tactile feedback in virtual reality through quadcopters," in *Proceedings of the 2017 CHI Conference Extended Abstracts on Human Factors in Computing Systems (CHI EA '17)*, pp. 433–436, 2017.
- [58] Y. Jansen, P. Dragicevic, et al., "Opportunities and challenges for data physicalization," in *Proceedings of the 33rd Annual ACM Conference on Human Factors in Computing Systems (CHI '15)*, 2015, pp. 3227–3236.
- [59] D. W. Tan, M. A. Schiefer, et al., "Stability and selectivity of a chronic, multi-contact cuff electrode for sensory stimulation in human amputees," in *Journal of Neural Engineering*, 12.2 (2015), p. 026002.
- [60] R. C. Muioli, P. H. J. Nardelli, et al., "Neurosciences and wireless networks: The potential of brain-type communications and their applications," in *IEEE Communications Surveys & Tutorials*, 23.3 (2021), pp. 1599–1621.
- [61] G. L. Poerio, E. Blakey, et al., "More than a feeling: Autonomous sensory meridian response (ASMR) is characterized by reliable changes in affect and physiology," in *PloS One*, 13.6 (2018), p. e0196645.