

Algebraic Watchdog: Mitigating Misbehavior in Wireless Network Coding

MinJi Kim*, Muriel Médard*, João Barros†

Abstract—We propose a secure scheme for wireless network coding, called the algebraic watchdog. By enabling nodes to detect malicious behaviors probabilistically and use overheard messages to police their downstream neighbors locally, the algebraic watchdog delivers a secure global *self-checking network*. Unlike traditional Byzantine detection protocols which are *receiver-based*, this protocol gives the senders an active role in checking the node downstream. The key idea is inspired by Marti *et al.*'s *watchdog-pathrater*, which attempts to detect and mitigate the effects of routing misbehavior.

As an initial building block of a such system, we first focus on a two-hop network. We present a graphical model to understand the inference process nodes execute to police their downstream neighbors; as well as to compute, analyze, and approximate the probabilities of misdetection and false detection. In addition, we present an algebraic analysis of the performance using an hypothesis testing framework that provides exact formulae for probabilities of false detection and misdetection.

We then extend the algebraic watchdog to a more general network setting, and propose a protocol in which we can establish *trust* in coded systems in a distributed manner. We develop a graphical model to detect the presence of an adversarial node downstream within a general multi-hop network. The structure of the graphical model (a trellis) lends itself to well-known algorithms, such as the Viterbi algorithm, which can compute the probabilities of misdetection and false detection. We show analytically that as long as the min-cut is not dominated by the Byzantine adversaries, upstream nodes can monitor downstream neighbors and allow reliable communication with certain probability. Finally, we present simulation results that support our analysis.

I. INTRODUCTION

There have been numerous contributions to secure wireless networks, including key management, secure routing, Byzantine detection, and various protocol designs (for a general survey on this topic, see [1][2][3][4][5][6][7][8]). Countering these types of threats is particularly important in military communications and networking, which are highly dynamic in nature and must not fail when adversaries succeed in compromising some of the nodes in the network. We consider the problem of Byzantine detection. The traditional approach is *receiver-based* – *i.e.* the receiver of the corrupted data detects the presence of an upstream adversary. However, this detection may come too late as the adversary is partially successful in disrupting the network (even if it is detected). It has wasted

network bandwidth, while the source is still unaware of the need for retransmission.

Reference [9] introduces a protocol for routing wireless networks, called the *watchdog and pathrater*, in which upstream nodes police their downstream neighbors using *promiscuous monitoring*. Promiscuous monitoring means that if a node v is within range of a node v' , it can overhear communication to and from v' even if those communication do not directly involve v . This scheme successfully detects adversaries and removes misbehaving nodes from the network by dynamically adjusting the routing paths. However, the protocol requires a significant overhead (12% to 24%) owing to increased control traffic and numerous cryptographic messages [9].

Our goal is to design and analyze a watchdog-inspired protocol for wireless networks using network coding. We propose a new scheme called the *algebraic watchdog*, in which nodes can detect malicious behaviors probabilistically by taking advantage of the broadcast nature of the wireless medium. Although we focus on detecting malicious or misbehaving nodes, the same approach can be applied to faulty or failing nodes. Our ultimate goal is a robust *self-checking network*. The key difference between the our work [10] and that of [9] is that we allow network coding. Network coding [11][12] is advantageous as it not only increases throughput and robustness against failures and erasures but also it is resilient in dynamic/unstable networks where state information may change rapidly or may be hard to obtain.

The key challenge in algebraic watchdog is that, by incorporating network coding, we can no longer recognize packets individually. In [9], a node v can monitor its downstream neighbor v' by checking that the packet transmitted by v' is a copy of what v transmitted to v' . However, with network coding, this is no longer possible as transmitted packets are a function of the received packets. Furthermore, v may not have full information regarding the packets received at v' ; thus, node v is faced with the challenge of inferring the packets received at v' and ensuring that v' is transmitting a valid function of the received packets. We note that [13] combines source coding with watchdog; thus, [13] does not face the same problem as the algebraic watchdog.

The paper is organized as follows. In Section II, we briefly discuss the intuition behind algebraic watchdog. In Section III, we present the background and related material. In Section IV, we introduce our problem statement and network model. In Section V, we analyze the protocol for a simple two-hop network, first algebraically in Section V-B and then graphically in Section V-A. In Section VI, we extend the analysis for algebraic watchdog to a more general two-hop network, and in Section VIII, we present an algebraic watchdog protocol for a multi-hop network. We present simulation results in Section

This work was partially presented at IEEE ISIT 2009 (Seoul, Korea) titled “An Algebraic Watchdog for Wireless Network Coding”, and at IEEE ITW 2010 (Dublin, Ireland) titled “A Multi-hop Multi-source Algebraic Watchdog”.

*M. Kim and M. Médard ({minjikim, medard}@mit.edu) are with the Research Laboratory of Electronics at the Massachusetts Institute of Technology, MA USA. †J. Barros (jbarros@fe.up.pt) is with the Instituto de Telecomunicações, Faculdade de Engenharia da Universidade do Porto, Portugal.

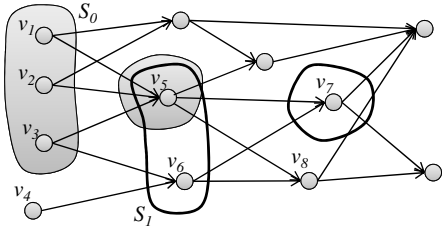


Fig. 1: An example network.

IX, which confirm our analysis and show that an adversary within the network can be detected probabilistically by upstream nodes. In Section X, we summarize our contribution and discuss some future work.

II. INTUITION

Consider a network in which the sources are well-behaving (If the sources are malicious, there is no “uncorrupted” information flow to protect). In such a case, the sources can monitor their downstream neighbors as shown in Figure 1. Assume that nodes v_1, v_2, v_3 , and v_4 are sources. Nodes in $S_0 = \{v_1, v_2, v_3\}$ can monitor v_5 collectively or independently. In addition, v_3 and v_4 can monitor v_6 . This enforces v_5 and v_6 to send valid information. Note that we do not make any assumption on whether v_5 and v_6 are malicious or not – they are forced to send valid information regardless of their true nature.

If it is the case that v_5 and v_6 are well-behaving, then we can employ the same scheme at v_5 or v_6 to check v_7 ’s behavior. Thus, propagating *trust* within the network. Now, what if v_5 or v_6 are malicious? If both v_5 and v_6 are malicious, all flows to v_7 are controlled by malicious nodes – *i.e.* flows through v_7 are completely compromised. Therefore, even if v_7 is well-behaving, there is nothing that v_7 or v_1, v_2, v_3, v_4 can do to protect the flow through v_7 . The only solution in this case would be to physically remove v_5 and v_6 from the network or to construct a new path to v_7 .

The intuition is that as long as the min-cut to any node is not dominated by malicious nodes, then the remaining well-behaving nodes can check its neighborhood and enforce that the information flow is delivered correctly to the destination. For example, assume that only v_6 is malicious and v_5 is well-behaving in Figure 1. Since v_3 and v_4 monitor v_6 , we know that despite v_6 being malicious, v_6 is forced to send valid information. Then, v_7 receives two valid information flows, which it is now responsible of forwarding. If v_7 is well-behaving, we do not have any problem. If v_7 is malicious, it may wish to inject errors to the information flow. In this case, v_7 is only liable to v_5 ; but it is liable to at least one well-behaving node v_5 . Thus, it is not completely free to inject any error it chooses; it has to ensure that v_5 cannot detect its misbehavior, which may be difficult to accomplish.

In this paper, we show that this is indeed the case. We first start by studying a two-hop network, which would be equivalent to focusing on the operations performed by nodes in S_0 to check v_5 . Then, we discuss how we can propagate this two-hop policing strategy to a multi-hop scenario.

III. BACKGROUND

A. Secure Network Coding

Network coding, first introduced in [11], allows algebraic mixing of information in the intermediate nodes. This mixing has been shown to have numerous performance benefits. It is known that network coding maximizes throughput for multicast [11] and increases robustness against failures [12] and erasures [14]. However, a major concern for network coded systems is their vulnerability to Byzantine adversaries. A single corrupted packet generated by a Byzantine adversary can contaminate all the information to a destination, and propagate to other destinations quickly. For example, in random linear network coding [14], one corrupted packet in a generation (*i.e.* a fixed set of packets) can prevent a receiver from decoding any data from that generation even if all the other packets it has received are valid.

There are several papers that attempt to address this problem. One approach is to correct the errors injected by the Byzantine adversaries using *network error correction* [15]. Reference [15] bounds the maximum achievable rate in an adversarial setting, and generalizes the Hamming, Gilbert-Varshamov, and Singleton bounds. Jaggi *et al.* [16] propose a distributed, rate-optimal, network coding scheme for multicast network that is resilient in the presence of Byzantine adversaries for sufficiently large field and packet size. Reference [17] generalizes [16] to provide correction guarantees against adversarial errors for any given field and packet size. In [18], Kim *et al.* compare the cost and benefit associated with these Byzantine detection schemes in terms of transmitted bits by allowing nodes to employ the detection schemes to drop polluted data.

B. Secure Routing Protocol: Watchdog and Pathrater

The problem of securing networks in the presence of Byzantine adversaries has been studied extensively, *e.g.* [5][6][7][8]. The *watchdog* and *pathrater* [9] are two extensions to the Dynamic Source Routing [19] protocol that attempt to detect and mitigate the effects of routing misbehavior. The *watchdog* detects misbehavior based on promiscuous monitoring of the transmissions of the downstream node to confirm if this relay correctly forwards the packets it receives. If a node bound to forward a packet fails to do so after a certain period of time, the *watchdog* increments a failure rating for that node and a node is deemed to be misbehaving when this failure rating exceeds a certain threshold. The *pathrater* then uses the gathered information to determine the best possible routes by avoiding misbehaving nodes. This mechanism, which does not punish these nodes (it actually relieves them from forwarding operations), provides an increase in the throughput of networks with misbehaving nodes [9].

C. Hypothesis Testing

Hypothesis testing is a method of deciding which of the two hypotheses, denoted H_0 and H_1 , is true, given an observation denoted as U . In this paper, H_0 is the hypothesis that v is well-behaving, H_1 is that v is malicious, and U is the information

gathered from overhearing. The observation U is distributed differently depending whether H_0 or H_1 is true, and these distributions are denoted as $P_{U|H_0}$ and $P_{U|H_1}$ respectively.

An algorithm is used to choose between the hypotheses given the observation U . There are two types of error associated with the decision process:

- *Type 1 error, False detection*: Accepting H_1 when H_0 is true (i.e. considering a well-behaving v to be malicious), and the probability of this event is denoted γ .
- *Type 2 error, Misdetction*: Accepting H_0 when H_1 is true (i.e. considering a malicious v to be well-behaving), and the probability of this event is denoted β .

The Neyman-Pearson theorem gives the optimal decision rule that given the maximal tolerable β , we can minimize γ by accepting hypothesis H_0 if and only if $\log \frac{P_{U|H_0}}{P_{U|H_1}} \geq t$ for some threshold t dependant on γ . For more thorough survey on hypothesis testing in the context of authentication, see [20].

IV. PROBLEM STATEMENT

We shall use elements from a field, and their bit-representation. We use the same character in italic font (i.e. x) for the field element, and in bold font (i.e. \mathbf{x}) for the bit-representation. We use underscore bold font (i.e. $\underline{\mathbf{x}}$) for vectors. For arithmetic operations in the field, we shall use the conventional notation (i.e. $+$, $-$, \cdot). For bit-operation, we shall use \oplus for addition, and \otimes for multiplication.

We also require polynomial hash functions defined as follows (for a more detailed discussion on this topic, see [21]).

Definition 4.1 (Polynomial hash functions): For a finite field \mathbf{F} and $d \geq 1$, the class of polynomial hash functions on \mathbf{F} is defined as follows:

$$\mathcal{H}^d(\mathbf{F}) = \{h_a | a = \langle a_0, \dots, a_d \rangle \in \mathbf{F}^{d+1}\},$$

where $h_a(x) = \sum_{i=0}^d a_i x^i$ for $x \in \mathbf{F}$.

We model a wireless network with a hypergraph $G = (V, E_1, E_2)$, where V is the set of the nodes in the network, E_1 is the set of hyperedges representing the connectivity (wireless links), and E_2 is the set of hyperedges representing the interference. We use the hypergraph to capture the broadcast nature of the wireless medium. If $(v_1, v_2) \in E_1$ and $(v_1, v_3) \in E_2$ where $v_1, v_2, v_3 \in V$, then there is an intended transmission from v_1 to v_2 , and v_3 can overhear this transmission (possibly incorrectly). There is a certain transition probability associated with the interference channels known to the nodes, and we model them with binary channels, $BSC(p_{ij})$ for $(v_i, v_j) \in E_2$.

A node $v_i \in V$ transmits coded information x_i by transmitting a packet $\underline{\mathbf{p}}_i$, where $\underline{\mathbf{p}}_i = [\mathbf{a}_i, \mathbf{h}_{\mathbf{I}_i}, \mathbf{h}_{\mathbf{x}_i}, \mathbf{x}_i]$ is a $\{0, 1\}$ -vector. A valid packet $\underline{\mathbf{p}}_i$ is defined as below:

- \mathbf{a}_i corresponds to the coding coefficients α_j , $j \in I_i$, where $I_i \subseteq V$ is the set of nodes adjacent to v_i in E_1 ,
- $\mathbf{h}_{\mathbf{I}_i}$ corresponds to the hash $h(x_j)$, $v_j \in I_i$ where $h(\cdot)$ is a δ -bit polynomial hash function,
- $\mathbf{h}_{\mathbf{x}_i}$ corresponds to the polynomial hash $h(x_i)$,
- \mathbf{x}_i is the n -bit representation of $x_i = \sum_{j \in I} \alpha_j x_j \in (\mathbf{F}_{2^n})$.

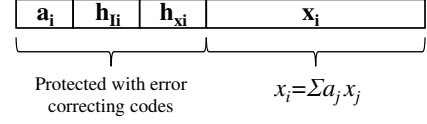


Fig. 2: A valid packet $\underline{\mathbf{p}}_i$ sent by well-behaving v_i .

Figure 2 illustrates the structure of a valid packet. For simplicity, we assume the payload \mathbf{x}_i to be a single symbol. We design and analyze our protocol for a single symbol. However, the protocol applies (and therefore, the analysis) to packets with multiple symbols by applying the protocol on each symbol separately.

The payload \mathbf{x}_i is coded with a (n, k_i) -code \mathcal{C}_i with minimum distance d_i . Code \mathcal{C}_i is an error-correcting code of rate $R_i = \frac{k_i}{n} = 1 - \frac{d_i}{n}$, and is tailored for the forward communication. For instance, v_1 uses code \mathcal{C}_1 , chosen appropriately for the channel $(v_1, v_j) \in E_1$, to transmit the payload \mathbf{x}_1 .

We assume that the payload \mathbf{x}_i is n -bits, and the hash $h(\cdot)$ is δ -bits. We assume that the hash function used, $h(\cdot)$, is known to all nodes, including the adversary. In addition, we assume that \mathbf{a}_i , $\mathbf{h}_{\mathbf{I}_i}$ and $\mathbf{h}_{\mathbf{x}_i}$ are part of the header information, and are sufficiently coded to allow the nodes to correctly receive them even under noisy channel conditions. Protecting the header sufficiently will induce some overhead, but the assumption remains a reasonable one to make. First, the header is smaller than the message itself. Second, even in the routing case, the header and the state information need to be coded sufficiently. Third, the hashes $\mathbf{h}_{\mathbf{I}_i}$ and $\mathbf{h}_{\mathbf{x}_i}$ are contained within one hop. A node that receives $\underline{\mathbf{p}}_i = [\mathbf{a}_i, \mathbf{h}_{\mathbf{I}_i}, \mathbf{h}_{\mathbf{x}_i}, \mathbf{x}_i]$ does not need to repeat $\mathbf{h}_{\mathbf{I}_i}$, only $\mathbf{h}_{\mathbf{x}_i}$. Therefore, the overhead associated with the hashes is proportional to the in-degree of a node, and does not accumulate with the routing path length.

Assume that v_i transmits $\underline{\mathbf{p}}_i = [\mathbf{a}_i, \mathbf{h}_{\mathbf{I}_i}, \mathbf{h}_{\mathbf{x}_i}, \hat{\mathbf{x}}_i]$, where $\hat{\mathbf{x}}_i = \mathbf{x}_i \oplus \mathbf{e}$, $\mathbf{e} \in \{0, 1\}^n$. If v_i is misbehaving, then $\mathbf{e} \neq 0$. Our goal is to detect with high probability when $\mathbf{e} \neq 0$. Even if $|\mathbf{e}|$ is small (i.e. the hamming distance between $\hat{\mathbf{x}}_i$ and \mathbf{x}_i is small), the algebraic interpretation of $\hat{\mathbf{x}}_i$ and \mathbf{x}_i may differ significantly. For example, consider $n = 4$, $\hat{\mathbf{x}}_i = [0000]$, and $\mathbf{x}_i = [1000]$. Then, $\mathbf{e} = [1000]$ and $|\mathbf{e}| = 1$. However, the algebraic interpretations of $\hat{\mathbf{x}}_i$ and \mathbf{x}_i are 0 and 8, respectively. Thus, even a single bit flip can alter the message significantly.

A. Threat Model

We assume powerful adversaries, who can eavesdrop their neighbor's transmissions, has the power to inject or corrupt packets, and are computationally unbounded. Thus, the adversary will find $\hat{\mathbf{x}}_i$ that will allow its misbehavior to be undetected, if there is any such $\hat{\mathbf{x}}_i$. However, the adversary does not know the specific realization of the random errors introduced by the channels. We denote the rate at which an adversary injects error (i.e. performs bit flips to the payload) to be p_{adv} . The adversaries' objective is to corrupt the information flow without being detected by other nodes.

Our goal is to detect probabilistically a malicious behavior that is beyond the channel noise, represented by $BSC(p_{ik})$. Note that the algebraic watchdog does not completely eliminate errors introduced by the adversaries; its objective is to

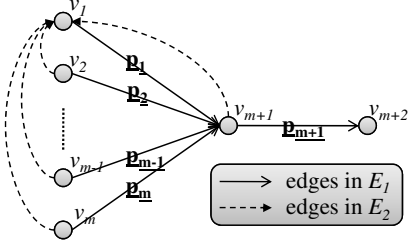


Fig. 3: A small neighborhood of a wireless network with v_1 .

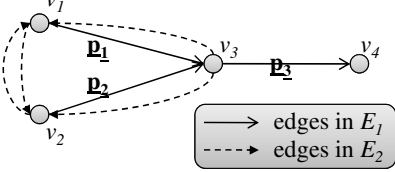


Fig. 4: A wireless network with $m = 2$.

limit the errors introduced by the adversaries to be at most that of the channel. Channel errors (or those introduced by adversaries below the channel noise level) can be corrected using appropriate error correction schemes, which will be necessary even without Byzantine adversaries in the network.

The notion that adversarial errors should sometimes be treated as channel noise has been introduced previously in [18]. Under heavy attack, attacks should be treated with special attention; while under light attack, the attacks can be treated as noise and corrected using error-correction schemes. The results in this paper partially reiterate this idea.

V. TWO-HOP NETWORK: AN EXAMPLE

Consider a network (or a small neighborhood of nodes in a larger network) with nodes $v_1, v_2, \dots, v_m, v_{m+1}, v_{m+2}$. Nodes $v_i, i \in [1, m]$, want to transmit x_i to v_{m+2} via v_{m+1} . A single node $v_i, i \in [1, m]$, cannot check whether v_{m+1} is misbehaving or not even if v_i overhears \mathbf{x}_{m+1} , since without any information about x_j for $j \in [1, m]$, x_{m+1} is completely random to v_i . On the other hand, if v_i knows x_{m+1} and x_j for all $j \in [1, m]$, then v_i can verify that v_{m+1} is behaving with certainty; however, this requires at least $m - 1$ additional reliable transmissions to v_i .

We take advantage of the wireless setting, in which nodes can overhear their neighbors' transmissions. In Figure 3, we use the solid lines to represent the intended channels E_1 , and dotted lines for the interference channels E_2 which we model with binary channels as mentioned in Section IV. Each node checks whether its neighbors are transmitting values that are consistent with the gathered information. If a node detects that its neighbor is misbehaving, then it can alert other nodes in the network and isolate the misbehaving node.

In the next subsections, we shall use an example with $m = 2$, as shown Figure 4. We introduce the graphical model which explains how a node v_i checks its neighbor's behavior. Then, we use an algebraic approach to analyze and compute γ and β for this example network with $m = 2$. In this section, we assume for simplicity that nodes do not code the payload – i.e. an error-correcting code of rate $R_i = 1$ is used.

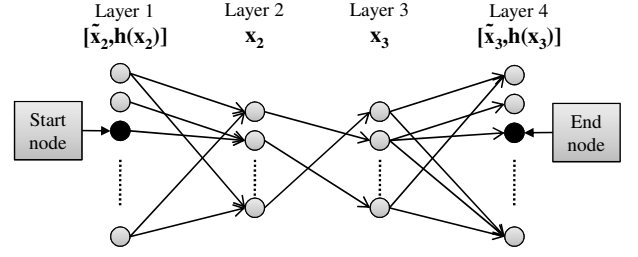


Fig. 5: A graphical model from v_1 's perspective

Note that a malicious v_3 would not inject errors in $\mathbf{h}_{\mathbf{x}_3}$ only, because the destination v_4 can easily verify if $\mathbf{h}_{\mathbf{x}_3}$ is equal to $h(\mathbf{x}_3)$. Therefore, $\mathbf{h}_{\mathbf{x}_3}$ and \mathbf{x}_3 are consistent. In addition, v_3 would not inject errors in $\mathbf{h}_{\mathbf{x}_j}, j \in I_3$, as each node v_j can verify the hash of its message. On the other hand, a malicious v_3 can inject errors in \mathbf{a}_3 , forcing v_4 to receive incorrect coefficients $\tilde{\alpha}_j$'s instead of α_j 's. However, any error introduced in \mathbf{a}_3 can be translated to errors in \mathbf{x}_3 by assuming that $\tilde{\alpha}_j$'s are the correct coding coefficients. Therefore, we are concerned only with the case in which v_3 introduces errors in \mathbf{x}_3 (and therefore, in $\mathbf{h}_{\mathbf{x}_3}$ such that $\mathbf{h}_{\mathbf{x}_3} = h(\mathbf{x}_3)$).

A. Graphical model approach

We present a graphical approach to model the problem for $m = 2$ systematically, and to explain how a node may check its neighbors. This approach may be advantageous as it lends easily to already existing graphical model algorithms as well as some approximation algorithms.

We shall consider the problem from v_1 's perspective. As shown in Figure 6, the graphical model has four layers: Layer 1 contains 2^{n+h} vertices, each representing a bit-representation of $[\tilde{\mathbf{x}}_2, \mathbf{h}(\mathbf{x}_2)]$; Layer 2 contains 2^n vertices, each representing a bit-representation of \mathbf{x}_2 ; Layer 3 contains 2^n vertices corresponding to \mathbf{x}_3 ; and Layer 4 contains 2^{n+h} vertices corresponding to $[\tilde{\mathbf{x}}_3, \mathbf{h}(\mathbf{x}_3)]$. Edges exist between adjacent layers as follows:

- **Layer 1 to Layer 2:** An edge exists between a vertex $[\mathbf{v}, \mathbf{u}]$ in Layer 1 and a vertex \mathbf{w} in Layer 2 if and only if $\mathbf{h}(\mathbf{w}) = \mathbf{u}$. The edge weight is normalized such that the total weight of edges leaving $[\mathbf{v}, \mathbf{u}]$ is 1, and the weight is proportional to:

$\mathbf{P}(\mathbf{v} | \text{Channel statistics and } \mathbf{w} \text{ is the original message})$, which is the probability that the inference channel outputs message \mathbf{v} given an input message \mathbf{w} .

- **Layer 2 to Layer 3:** The edges represent a permutation. A vertex \mathbf{v} in Layer 2 is adjacent to a vertex \mathbf{w} in Layer 3 if and only if $w = c + \alpha_2 v$, where $c = \alpha_1 x_1$ is a constant, \mathbf{v} and \mathbf{w} are the bit-representation of v and w , respectively. The edge weights are all 1.
- **Layer 3 to Layer 4:** An edge exists between a vertex \mathbf{v} in Layer 3 and a vertex $[\mathbf{w}, \mathbf{u}]$ in Layer 4 if and only if $\mathbf{h}(\mathbf{v}) = \mathbf{u}$. The edge weight is normalized such that the total weight leaving \mathbf{v} is 1, and is proportional to:

$\mathbf{P}(\mathbf{w} | \text{Channel statistics and } \mathbf{v} \text{ is the original message})$.

Node v_1 overhears the transmissions from v_2 to v_3 and from v_3 to v_4 ; therefore, it receives $[\tilde{\mathbf{x}}_2, \mathbf{h}(\mathbf{x}_2)]$ and $[\tilde{\mathbf{x}}_3, \mathbf{h}(\mathbf{x}_3)]$,

corresponding to the *starting point* in Layer 1 and the *destination point* in Layer 4 respectively. By computing the sum of the product of the weights of all possible paths between the starting and the destination points, v_1 computes the probability that v_3 is consistent with the information gathered.

This graphical model illustrates sequentially and visually the inference process v_1 executes. Furthermore, by using approximation algorithms and pruning algorithms, we may be able to simplify the computation as well as the structure of the graph. In addition, the graphical approach may be extend to larger networks, as we shall discuss in Section VI.

B. Algebraic approach

We explain the inference process described above using the graphical model introduced in Section V-A. Consider v_1 . By assumption, v_1 correctly receives $\mathbf{a}_2, \mathbf{a}_3, \mathbf{h}_{I_2}, \mathbf{h}_{I_3}, \mathbf{h}_{x_2}$, and \mathbf{h}_{x_3} . In addition, v_1 receives $\tilde{\mathbf{x}}_2 = \mathbf{x}_2 + \mathbf{e}'$ and $\tilde{\mathbf{x}}_3 = \mathbf{x}_3 + \mathbf{e}''$, where \mathbf{e}' and \mathbf{e}'' are outcomes of the interference channels. Given $\tilde{\mathbf{x}}_j$ for $j = \{2, 3\}$ and the transition probabilities, v_1 computes $r_{j \rightarrow 1}$ such that the sum of the probability that the interference channel from v_j and v_1 outputs $\tilde{\mathbf{x}}_j$ given $\mathbf{x} \in B(\tilde{\mathbf{x}}_j, r_{j \rightarrow 1})$ is greater or equal to $1 - \epsilon$ where ϵ is a constant, and $B(\mathbf{x}, r)$ is a n -dimensional ball of radius r centered at \mathbf{x} . Now, v_1 computes $\tilde{X}_j = \{\mathbf{x} \mid h(x) = h(x_j)\} \cap B(\tilde{\mathbf{x}}_j, r_{j \rightarrow 1})$ for $j = \{2, 3\}$. Then, v_1 computes $\alpha_1 x_1 + \alpha_2 \tilde{x}$ for all $\tilde{\mathbf{x}} \in \tilde{X}_2$. Then, v_1 intersects \tilde{X}_3 and the computed $\alpha_1 x_1 + \alpha_2 \tilde{x}$'s. If the intersection is empty, then v_1 claims that R is misbehaving.

The set $\{\mathbf{x} \mid h(x) = h(x_2)\}$ represents the Layer 2 vertices reachable from the starting point ($[\tilde{\mathbf{x}}_2, \mathbf{h}(\mathbf{x}_2)]$ in Layer 1), and \tilde{X}_2 is a subset of the reachable Layer 2 vertices such that the total edge weight (which corresponds to the transition probability) from the starting point is greater than $1 - \epsilon$. Then, computing $\alpha_1 x_1 + \alpha_2 \tilde{x}$ represents the permutation from Layers 2 to 3. Finally, the intersection with \tilde{X}_3 represents finding a set of Layer 3 vertices such that they are adjacent to the destination point ($[\tilde{\mathbf{x}}_3, \mathbf{h}(\mathbf{x}_3)]$ in Layer 4) and their total transition probability to the destination point is greater than $1 - \epsilon$.

Lemma 5.1: For n sufficiently large, the probability of false detection, $\gamma \leq \epsilon$ for any arbitrary small constant ϵ .

Proof: Assume that v_3 is not malicious, and transmits \mathbf{x}_3 and \mathbf{h}_{x_3} consistent with v_4 's check. Then, for n sufficiently large, v_1 can choose $r_{2 \rightarrow 1}$ and $r_{3 \rightarrow 1}$ such that the probability that the bit representation of $x_3 = \alpha_1 x_1 + \alpha_2 x_2$ is in \tilde{X}_3 and the probability that $\mathbf{x}_2 \in \tilde{X}_2$ are greater than $1 - \epsilon$. Therefore, $\tilde{X}_3 \cap \{\alpha_1 x_1 + \alpha_2 \tilde{x} \mid \forall \tilde{\mathbf{x}} \in \tilde{X}_2\} \neq \emptyset$ with probability arbitrary close to 1. Therefore, a well-behaving v_3 passes v_1 's check with probability at least $1 - \epsilon$. Thus, $\gamma \leq \epsilon$. ■

Lemma 5.2: The probability that a malicious v_3 is undetected from v_1 's perspective is given by

$$\min \left\{ 1, \frac{\sum_{k=0}^{r_{1 \rightarrow 2}} \binom{n}{k}}{2^{(h+n)}} \cdot \frac{\sum_{k=0}^{r_{2 \rightarrow 1}} \binom{n}{k}}{2^{(h+n)}} \cdot \frac{\sum_{k=0}^{r_{3 \rightarrow 1}} \binom{n}{k}}{2^h} \right\}.$$

Proof: Assume that v_3 is malicious and injects errors into \mathbf{x}_3 . Consider an element $\mathbf{z} \in \tilde{X}_3$, where $z = \alpha_1 x_1 + \alpha_2 x_2 + e = \alpha_1 x_1 + \alpha_2 (x_2 + e_2)$ for some e and e_2 . Note that, since we are using a field of size 2^n , multiplying an element

from the field by a randomly chosen constant has the effect of randomizing the product. Here, we consider two cases:

Case 1: If $x_2 + e_2 \notin \tilde{X}_2$, then v_3 fails v_1 's check.

Case 2: If $x_2 + e_2 \in \tilde{X}_2$, then v_3 passes v_1 's check; however, v_3 is unlikely to pass v_2 's check. This is because $\alpha_1 x_1 + \alpha_2 (x_2 + e_2) = \alpha_1 x_1 + \alpha_2 x_2 + \alpha_2 e_2 = \alpha_1 (x_1 + e_1) + \alpha_2 x_2$ for some e_1 . Here, for uniformly random α_1 and α_2 , e_1 is also uniformly random. Therefore, the probability that v_3 will pass is the probability that the uniformly random vector $x_1 + e_1$ belongs to $\tilde{X}_1 = \{x \mid h(x) = h(x_1)\} \cap B(\tilde{\mathbf{x}}_1, r_{1 \rightarrow 2})$ where v_2 overhears $\tilde{\mathbf{x}}_1$ from v_1 , and the probability that the interference channel from v_1 to v_2 outputs $\tilde{\mathbf{x}}_1$ given $\mathbf{x} \in B(\tilde{\mathbf{x}}_1, r_{1 \rightarrow 2})$ is greater than $1 - \epsilon$.

$\mathbf{P}(\text{A malicious } v_3 \text{ passes } v_2\text{'s check})$

$$= \mathbf{P}(x_1 + e_1 \in \tilde{X}_1) = \frac{\text{Vol}(\tilde{X}_1)}{2^n},$$

where $\text{Vol}(\cdot)$ is equal to the number of $\{0, 1\}$ -vectors in the given set. Since $\text{Vol}(B(x, r)) = \sum_{k=0}^r \binom{n}{k} \leq 2^n$, and the probability that $h(x)$ is equal to a given value is $\frac{1}{2^n}$, $\text{Vol}(\tilde{X}_1)$ is given as follows:

$$\text{Vol}(\tilde{X}_1) = \frac{\text{Vol}(B(\tilde{x}_1, r_{1 \rightarrow 2}))}{2^h} = \frac{\sum_{k=0}^{r_{1 \rightarrow 2}} \binom{n}{k}}{2^h}.$$

Therefore, from v_1 's perspective, the probability that a $\mathbf{z} \in \tilde{X}_3$ passes the checks, $\mathbf{P}(\mathbf{z} \text{ passes check})$, is:

$$0 \cdot \mathbf{P}(x_2 + e_2 \notin \tilde{X}_2) + \frac{\sum_{k=0}^{r_{1 \rightarrow 2}} \binom{n}{k}}{2^{(h+n)}} \cdot \mathbf{P}(x_2 + e_2 \in \tilde{X}_2).$$

Similarly, $\mathbf{P}(x_2 + e_2 \in \tilde{X}_2) = \frac{\sum_{k=0}^{r_{2 \rightarrow 1}} \binom{n}{k}}{2^{(h+n)}}$, and $\text{Vol}(\tilde{X}_3) = \frac{\sum_{k=0}^{r_{3 \rightarrow 1}} \binom{n}{k}}{2^h}$. Then, the probability that v_3 is undetected from v_1 's perspective is the probability that *at least one* $\mathbf{z} \in \tilde{X}_3$ passes the check:

$\mathbf{P}(\text{A malicious } v_3 \text{ is undetected from } v_1\text{'s perspective})$

$$= \min\{1, \mathbf{P}(\mathbf{z} \text{ passes check}) \cdot \text{Vol}(\tilde{X}_3)\}.$$

Note that $\mathbf{P}(\mathbf{z} \text{ passes check}) \cdot \text{Vol}(\tilde{X}_3)$ is the expected number of $\mathbf{z} \in \tilde{X}_3$ that passes the check; thus, given a high enough $\mathbf{P}(\mathbf{z} \text{ passes check})$, would exceed 1. Therefore, we take $\min\{1, \mathbf{P}(\mathbf{z} \text{ passes check}) \cdot \text{Vol}(\tilde{X}_3)\}$ to get a valid probability. This proves the statement. ■

Lemma 5.3: The probability that a malicious v_3 is undetected from v_2 's perspective is given by

$$\min \left\{ 1, \frac{\sum_{k=0}^{r_{1 \rightarrow 2}} \binom{n}{k}}{2^{(h+n)}} \cdot \frac{\sum_{k=0}^{r_{2 \rightarrow 1}} \binom{n}{k}}{2^{(h+n)}} \cdot \frac{\sum_{k=0}^{r_{3 \rightarrow 2}} \binom{n}{k}}{2^h} \right\},$$

where v_2 overhears $\tilde{\mathbf{x}}_3$ from v_3 , and the probability that the interference channel from v_3 to v_2 outputs $\tilde{\mathbf{x}}_3$ given $\mathbf{x} \in B(\tilde{\mathbf{x}}_3, r_{3 \rightarrow 2})$ is greater than $1 - \epsilon$.

Proof: By similar analysis as in proof of Lemma 5.2. ■

Theorem 5.1: The probability of misdetection, β , is:

$$\beta = \min \left\{ 1, \frac{\sum_{k=0}^{r_{1 \rightarrow 2}} \binom{n}{k}}{2^{(h+n)}} \cdot \frac{\sum_{k=0}^{r_{2 \rightarrow 1}} \binom{n}{k}}{2^{(h+n)}} \cdot \frac{1}{2^h} \sum_{k=0}^r \binom{n}{k} \right\},$$

where $r = \min\{r_{3 \rightarrow 1}, r_{3 \rightarrow 2}\}$.

Proof: The probability of misdetection is the minimum of the probability that v_1 and v_2 do not detect a malicious v_3 . Therefore, by Lemma 5.2 and 5.3, the statement is true. ■

Theorem 5.1 shows that the probability of misdetection β decreases with the hash size, as the hashes restrict the space of consistent codewords. In addition, since $r_{1 \rightarrow 2}$, $r_{2 \rightarrow 1}$, $r_{3 \rightarrow 1}$, and $r_{3 \rightarrow 2}$ represent the uncertainty introduced by the interference channels, β increases with them. Lastly and the most interestingly, β decreases with n , since $\sum_{k=0}^r \binom{n}{k} < 2^n$ for $r < n$. This is because network coding randomizes the messages over a field whose size is increasing exponentially with n , and this makes it difficult for an adversary to introduce errors without introducing inconsistencies.

We can apply Theorem 5.1 even when v_1 and v_2 cannot overhear each other. In this case, both $r_{1 \rightarrow 2}$ and $r_{2 \rightarrow 1}$ equal to n , giving the probability of misdetection, $\beta = \min\{1, \sum_{k=0}^r \binom{n}{k}/8^h\}$ where $r = \min\{r_{3 \rightarrow 1}, r_{3 \rightarrow 2}\}$. Here, β highly depends on h , the size of the hash, as v_1 and v_2 are only using their own message and the overheard hashes.

The algebraic approach results in an analysis with exact formulae for γ and β . In addition, these formulae are conditional probabilities; as a result, they hold regardless of a priori knowledge of whether v_3 is malicious or not. However, performing algebraic analysis is not very extensible with growing m .

VI. ALGEBRAIC WATCHDOG FOR TWO-HOP NETWORK

We extend the algebraic watchdog to a more general two-hop network, as in Figure 3. We shall develop upon the trellis introduced in Section V, and formally present a graphical representation of the inference process performed by a node performing algebraic watchdog on its downstream neighbor.

There are three main steps in performing the algebraic watchdog. First, we need to infer the original messages from the overheard information, which is captured by the transition matrix in Section VI-A. The second step consists of forming an opinion regarding what the next-hop node v_{m+1} should be sending, which is inferred using a trellis structure as shown in Section VI-B and a Viterbi-like algorithm in Section VI-C. Finally, we combine the inferred information with what we overhear from v_{m+1} to make a decision on how v_{m+1} is behaving, as discussed in Section VI-D. Figure 6 illustrates these three steps.

A. Transition matrix

We define a *transition matrix* T_i to be a $2^{n(1-H(\frac{d_i}{n}))+\delta} \times 2^{n(1-H(\frac{d_i}{n}))}$ matrix, where $H(\cdot)$ is the entropy function.

$$T_i(\tilde{x}_i, y) = \begin{cases} \frac{p_i(\tilde{x}_i, y)}{N}, & \text{if } h(y) = h(x_i) \\ 0, & \text{otherwise} \end{cases},$$

$$p_i(\tilde{x}_i, y) = p_{i1}^{\Delta(\tilde{x}_i, y)} (1 - p_{i1})^{n - \Delta(\tilde{x}_i, y)},$$

$$\mathcal{N} = \sum_{\{y|h(y)=h(x_i)\}} p_i(\tilde{x}_i, y),$$

where $\Delta(\mathbf{x}, \mathbf{y})$ gives the Hamming distance between codewords \mathbf{x} and \mathbf{y} . In other words, v_1 computes $\tilde{X}_i = \{x|h(x) = h(x_i)\}$ to be the list of *candidates* of x_i . For any overheard

pair $[\tilde{x}_i, \mathbf{h}(\mathbf{x}_i)]$, there are multiple candidates of x_i (i.e. $|\tilde{X}_i|$) although the probabilities associated with each inferred x_i are different. This is because there are uncertainties associated with the wireless medium, represented by $BSC(p_{i1})$.

For each $x \in \tilde{X}_i$, $p_i(\tilde{x}_i, x)$ gives the probability of x being the original codeword sent by node v_i given that v_1 overheard \tilde{x}_i under $BSC(p_{i1})$. Since we are only considering $x \in \tilde{X}_i$, we normalize the probabilities using \mathcal{N} to get the *transition probability* $T_i(\tilde{x}_i, x)$. Note $T_i(\tilde{x}_i, y) = 0$ if $h(y) \neq h(x_i)$.

The structure of T_i heavily depends on the collisions of the hash function $h(\cdot)$ in use. Note that the structure of T_i is independent of i , and therefore, a single transition matrix T can be precomputed for all $i \in [1, m]$ given the hash function $h(\cdot)$. A graphical representation of T is shown in Figure 6a. For simplicity of notation, we represent T as a matrix; however, the transition probabilities can be computed efficiently using hash collision lists as well.

B. Watchdog trellis

Node v_1 uses the information gathered to generate a trellis, which is used to infer the valid linear combination that v_{m+1} should transmit to v_{m+2} . As shown in Figure 6b, the trellis has m layers: each layer may contain up to 2^n states, each representing the inferred linear combination so far. For example, Layer i consist of all possible values of $\sum_{j=1}^i \alpha_j x_j$.

The matrices $T_i, i \in [2, m]$, defines the connectivity of the trellis. Let s_1 and s_2 be states in Layer $i-1$ and Layer i , respectively. Then, an edge (s_1, s_2) exists if and only if

$$\exists x \text{ such that } s_1 + \alpha_i x = s_2, T_i(\tilde{x}_i, x) \neq 0.$$

We denote $w_e(\cdot, \cdot)$ to be the edge weight, where $w_e(s_1, s_2) = T_i(\tilde{x}_i, x)$ if edge (s_1, s_2) exists, and zero otherwise.

C. Viterbi-like algorithm

We denote $w(s, i)$ to be the weight of state s in Layer i . Node v_1 selects a *start state* in Layer 1 corresponding to $\alpha_1 x_1$, as shown in Figure 6. The weight of Layer 1 state is $w(s, 1) = 1$ if $s = \alpha_1 x_1$, zero otherwise. For the subsequent layers, multiple paths can lead to a given state, and the algorithm keeps the aggregate probability of reaching that state. To be more precise, $w(s, i)$ is:

$$w(s, i) = \sum_{\forall s' \in \text{Layer } i-1} w(s', i-1) \cdot w_e(s', s).$$

By definition, $w(s, i)$ is equal to the total probability of $s = \sum_{j=1}^i \alpha_j x_j$ given the overheard information. Therefore, $w(s, m)$ gives the probability that s is the valid linear combination that v_{m+1} should transmit to v_{m+2} . It is important to note that $w(s, m)$ is dependent on the channel statistics, as well as the overheard information. For some states s , $w(s, m) = 0$, which indicates that state s can not be a valid linear combination; only those states s with $w(s, m) > 0$ are the *inferred candidate linear combinations*.

The algorithm introduced above is a dynamic program, and is similar to the Viterbi algorithm. Therefore, tools developed for dynamic programming/Viterbi algorithm can be used to compute the probabilities efficiently.

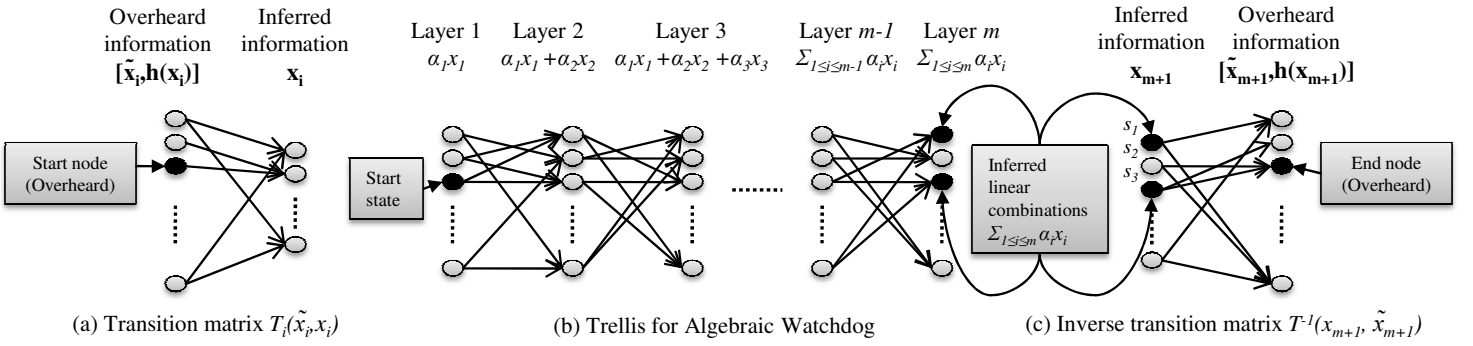


Fig. 6: Graphical representation of the inference process at node v_1 . In the trellis, the transition probability from Layer $i - 1$ to Layer i is given by $T_i(\tilde{x}_i, x_i)$, which is shown in (a).

D. Decision making

Node v_1 computes the probability that the overheard \tilde{x}_{m+1} and $h(x_{m+1})$ are consistent with the inferred $w(\cdot, m)$ to make a decision regarding v_{m+1} 's behavior. To do so, v_1 constructs an *inverse transition matrix* T^{-1} , which is a $2^{n(1-\frac{d_{m+1}}{n})} \times 2^{n(1-\frac{d_{m+1}}{n})+\delta}$ matrix whose elements are defined as follows:

$$T^{-1}(y, \tilde{x}_{m+1}) = \begin{cases} \frac{p_{m+1}(\tilde{x}_{m+1}, y)}{\mathcal{M}}, & \text{if } h(y) = h(x_{m+1}) \\ 0, & \text{otherwise} \end{cases},$$

$$\mathcal{M} = \sum_{\{y|h(y)=h(x_{m+1})\}} p_{m+1}(\tilde{x}_{m+1}, y).$$

Unlike T introduced in Section VI-A, $T^{-1}(x, \tilde{x}_{m+1})$ gives the probability of overhearing $[\tilde{x}_{m+1}, h(x_{m+1})]$ given that $x \in \{y|h(y) = h(x_{m+1})\}$ is the original codeword sent by v_{m+1} and the channel statistics. Note that T^{-1} is identical to T except for the normalizing factor \mathcal{M} . A graphical representation of T^{-1} is shown in Figure 6c.

In Figure 6c, s_1 and s_3 are the inferred candidate linear combinations, i.e. $w(s_1, m) \neq 0$ and $w(s_2, m) \neq 0$; the *end node* indicates what node v_1 has overheard from v_{m+1} . Note that although s_1 is one of the inferred linear combinations, s_1 is not connected to the end node. This is because $h(s_1) \neq h(x_{m+1})$. On the other hand, $h(s_2) = h(x_{m+1})$; as a result, s_2 is connected to the end node although $w(s_2, m) = 0$. We define an inferred linear combination s as *matched* if $w(s, m) > 0$ and $h(s) = h(x_{m+1})$.

Node v_1 uses T^{-1} to compute the total probability p^* of hearing $[\tilde{x}_{m+1}, h(x_{m+1})]$ given the inferred linear combinations by computing the following equation:

$$p^* = \sum_{\forall s} w(s, m) \cdot T^{-1}(s, \tilde{x}_{m+1}).$$

Probability p^* is the probability of overhearing \tilde{x}_{m+1} given the channel statistics; thus, measures the likelihood that v_{m+1} is consistent with the information gathered by v_1 . Node v_1 can use p^* to make a decision on v_{m+1} 's behavior. For example, v_1 can use a threshold decision rule to decide whether v_{m+1} is misbehaving or not: v_1 claims that v_{m+1} is malicious if $p^* \leq t$ where t is a threshold value determined by the given channel statistics; otherwise, v_1 claims v_{m+1} is well-behaving.

Depending on the decision policy used, we can use the hypothesis testing framework to analyze the probability of false positive and false negative. Section V provides such

analysis for the simple two-hop network with a simple decision policy – if the inferred linear combination and the message overheard from the next hop node is non-empty, we declare the node well-behaving. However, the main purpose of this paper is to propose a method in which we can compute p^* , which can be used to establish trust within a network. We note that it would be worthwhile to look into specific decision policies and their performance (i.e. false positive/negative probabilities) as in [10].

VII. ANALYSIS FOR TWO-HOP NETWORK

We provide an analysis for the performance of algebraic watchdog for two-hop network.

Theorem 7.1: Consider a two-hop network as shown in Figure 3. Consider v_j , $j \in [1, m]$. Then, the number of *matched* codewords is:

$$2^n \left[\sum_{i \neq j, i \in [1, m+1]} \left(H(p_{ij}) - H\left(\frac{d_i}{n}\right) \right) - 1 \right] - m\delta.$$

Proof: Without loss of generality, we consider v_1 . The proof uses on concepts and techniques developed for list-decoding [22]. We first consider the overhearing of v_k 's transmission, $k \in [2, m]$. Node v_1 overhears \tilde{x}_k from v_k . The noise introduced by the overhearing channel is characterized by $BSC(p_{k1})$; thus, $E[\Delta(\mathbf{x}_k, \tilde{\mathbf{x}}_k)] = np_{k1}$. Now, we consider the number of codewords that are within $B(\tilde{x}_k, np_{k1})$, the Hamming ball of radius np_{k1} centered at \tilde{x}_k is $|B(\tilde{x}_k, np_{k1})| = 2^{n(H(p_{k1}) - H(\frac{d_k}{n}))}$. Node v_1 overhears the hash $h(x_k)$; thus, the number of codewords that v_1 considers is reduced to $2^{n(H(p_{k1}) - H(\frac{d_k}{n})) - \delta}$. Using this information, v_1 computes the set of inferred linear combinations, i.e. s where $w(s, m) > 0$. Note that v_1 knows precisely the values of x_1 . Therefore, the number of inferred linear combinations is upper bounded by:

$$\prod_{k \in [2, m]} \left(2^{n(H(p_{k1}) - H(\frac{d_k}{n})) - \delta} \right) \quad (1)$$

$$= 2^{n \left[\sum_{k \in [2, m]} \left(H(p_{k1}) - H(\frac{d_k}{n}) \right) \right] - (m-1)\delta} \quad (2)$$

Due to the finite field operations, these inferred linear combinations are randomly distributed over the space $\{0, 1\}^n$.

Now, we consider the overheard information, \tilde{x}_{m+1} from the downstream node v_{m+1} . By similar analysis as above, we can derive that there are $2^{n(H(p_{m+1,1}) - H(\frac{d_{m+1}}{n})) - \delta}$ codewords in the hamming ball $B(\tilde{x}_{m+1}, np_{m+1,1})$ with hash

```

foreach node  $v$  do
  According to the schedule, transmit and receive data;
  if  $v$  decides to check its neighborhood then
    Listen to neighbors' transmissions;
    foreach downstream neighbor  $v'$  do
      Perform Two-hop Algebraic Watchdog on  $v'$ ;
    end
  end
end

```

Algorithm 1: Distributed algebraic watchdog at v .

value $h(x_{m+1})$. Thus, the probability that a randomly chosen codeword in the space of $\{0, 1\}^n$ is in $B(\tilde{x}_{m+1}, np_{m+1,1}) \cap \{x | h(x) = h(x_{m+1})\}$ is give by

$$\frac{2^{n(H(p_{m+1,1}) - H(\frac{d_{m+1}}{n})) - \delta}}{2^n}. \quad (3)$$

Then, the expected number of *matched* codewords is the product of Equations (2) and (3). ■

If we assume that the hash is of length $\delta = \varepsilon n$, then the statement in Theorem 7.1 is equal to:

$$2^{n[\sum_{i \neq j, i \in [1, m+1]} H(p_{ij}) - (\sum_{i \neq j, i \in [1, m+1]} H(\frac{d_i}{n}) + 1 + m\varepsilon)]}. \quad (4)$$

This highlights the tradeoff between the quality of overhearing channel and the redundancy (introduced by C_i 's and the hash h). If enough redundancy is introduced, then C_i and h together form an error-correcting code for the overhearing channels; thus, allows exact decoding to a single matched codeword.

The analysis also shows how adversarial errors can be interpreted. Assume that v_{m+1} wants to inject errors at rate p_{adv} . Then, node v_1 , although has an overhearing $BSC(p_{m+1,1})$, effectively experiences an error rate of $p_{adv} + p_{m+1,1} - p_{adv} \cdot p_{m+1,1}$. Note that this does not change the set of the inferred linear combinations; but it affects \tilde{x}_{m+1} . Thus, overall, adversarial errors affect the set of matched codewords and the distribution of p^* . As we shall see in Section IX, the difference in distribution of p^* between a well-behaving relay and adversarial relay can be used to detect malicious behavior.

VIII. PROTOCOL FOR ALGEBRAIC WATCHDOG

We use the two-hop algebraic watchdog from Section VI in a hop-by-hop manner to ensure a globally secure network. In Algorithm 1, we present a distributed algorithm for nodes to secure their local neighborhood. Each node v transmits/receives data as scheduled; however, node v randomly chooses to check its neighborhood, at which point node v listens to neighbors transmissions to perform the two-hop algebraic watchdog from Section VI.

Corollary 8.1: Consider v_{m+1} as shown in Figure 3. Assume that the downstream node v_{m+2} is well-behaving, and thus, forces $\mathbf{h}_{x_{m+1}} = h(x_{m+1})$. Let \mathbf{p}_i be the packet received by v_{m+1} from parent node $v_i \in P(v)$. Then, if there exists at least one well-behaving parent $v_j \in P(v)$, v_{m+1} cannot inject errors beyond the overhearing channel noise ($p_{m+1,j}$) without being detected.

Section VII noted that presence of adversarial error (at a rate above the channel noise) can be detected by a change in distribution of p^* . Corollary 8.1 does not make any assumptions on whether packets \mathbf{p}_i 's are valid or not. Instead, the claim states that v_{m+1} transmits a valid packet *given* the packets \mathbf{p}_i it has received.

Corollary 8.2: Node v can inject errors beyond the channel noise only if either of the two conditions are satisfied:

- 1) All its parent nodes $P(v) = \{u | (u, v) \in E_1\}$ are colluding Byzantine nodes;
- 2) All its downstream nodes, *i.e.* receivers of the transmission \mathbf{p}_i , are colluding Byzantine nodes.

Remark: In Case 1), v is not responsible to any well-behaving nodes. Node v can transmit any packet without the risk of being detected by any well-behaving parent node. However, then, the min-cut to v is dominated by adversaries, and the information flow through v is completely compromised – regardless of whether v is malicious or not.

In Case 2), v can generate any hash value since its downstream nodes are colluding adversaries. Thus, it is not liable to transmit a consistent hash, which is necessary for v 's parent nodes to monitor v 's behavior. However, note that v is not responsible in delivering any data to a well-behaving node. Even if v were well-behaving, it cannot reach any well-behaving node without going through a malicious node in the next hop. Thus, the information flow through v is again completely compromised.

Therefore, Corollary 8.2 shows that the algebraic watchdog can aid in ensuring correct delivery of data when the following assumption holds: for every intermediate node v in the path between source to destination, v has at least one well-behaving parent and at least one well-behaving child – *i.e.* there exists at least a path of well-behaving nodes. This is not a trivial result as we are not only considering a single-path network, but also multi-hop, multi-path network.

IX. SIMULATIONS

We present MATLAB simulation results that show the difference in distribution of p^* between the well-behaving and adversarial relay. We consider a setup in Figure 3. We set all p_{i1} , $i \in [2, m]$ to be equal, and we denote this probability as $p_s = p_{i1}$ for all i . We denote p_{adv} to be the probability at which the adversary injects error; thus, the effective error that v_1 observes from an adversarial relay is combined effect of $p_{m+1,1}$ and p_{adv} . The hash function $h(x) = ax + b \mod 2^\delta$ is randomly chosen over $a, b \in \mathbb{F}_2^\delta$.

We set $n = 10$; thus, the coding field size is 2^{10} . A typical packet can have a few hundreds to tens of thousand bits. Thus, a network coded packet with $n = 10$ could have a few tens to a few thousands of symbols over which to perform algebraic watchdog. It may be desirable to randomize which symbols a node performs algebraic watchdog on, or when to perform algebraic watchdog. This choice depends not only on the security requirement, but also on the computational and energy budget of the node.

For each set of parameters, we randomly generate symbols from $\mathbb{F}_{2^{10}}$ ($n = 10$ bits) and run algebraic watchdog. For

each symbol, under a non-adversarial setting, we assume that only channel randomly injects bit errors to the symbol; under adversarial setting, both the channel and the adversary randomly inject bit errors to the symbol. For each set of parameters, we run the algebraic watchdog 1000 times. Thus, this is equivalent to running the algebraic watchdog on a moderately-sized packet (10,000 bits) or over several smaller packets, which are network coded using field size of $\mathbb{F}_{2^{10}}$.

For simplicity, nodes in the simulation do not use error-correcting codes; thus, $d_i = 0$ for all i . This limits the power of the algebraic watchdog; thus, the results shown can be further improved by using error correcting codes \mathcal{C}_i .

We denote p_{adv}^* and p_{relay}^* as the value of p^* when the relay is adversarial and is well-behaving, respectively. We denote var_{adv} and var_{relay} to be the variance of p_{adv}^* and p_{relay}^* . We shall show results that show the difference in distribution of p_{adv}^* and p_{relay}^* from v_1 's perspective. Note that this illustrates that only *one* good parent node, *i.e.* v_1 in our simulations, is sufficient to notice the difference in distribution of p_{adv}^* and p_{relay}^* . Thus, confirming our analysis in Section VIII. With more parent nodes performing the check independently, we can improve the probability of detection.

Our simulation results coincide with our analysis and intuition. Figure 7 shows that adversarial above the channel noise can be detected. First of all, for all values of $p_{adv} > 0$, $p_{adv}^* < p_{relay}^*$; thus, showing that adversarial errors can be detected. Furthermore, the larger the adversarial error injection rate, the bigger the difference in the distributions of p_{adv}^* and p_{relay}^* . When adversarial error rate is small, then the effective error v_1 sees in the packet can easily be construed as that of the channel noise, and thus, if appropriate channel error correcting code is used, can be corrected by the downstream node. As a result, the values/distributions of p_{relay}^* and p_{adv}^* are similar. However, as the adversarial error rate increases, there is a divergence between the two distributions. Note that the difference in the distributions of p_{relay}^* and p_{adv}^* is not only in the average value. The variance var_{relay} is relatively constant throughout (var_{relay} is approximately 0.18 throughout). On the other hand, var_{adv} generally decreases with increase in p_{adv} . For small p_{adv} , the variance var_{adv} is approximately 0.18; while for large p_{adv} , the variance var_{adv} is approximately 0.08. This trend intuitively shows that, with increase in p_{adv} , not only do we detect that the adversarial relay more often (since the average value of p_{adv}^* decreases), but we are more confident of the decision.

Figure 8 shows the affect of the size of the hash. With increase in redundancy (by using hash functions of length δ), v_1 can detect malicious behavior better. This is true regardless of whether the relay is well-behaving or not. Node v_1 's ability to judge its downstream node increases with δ . Thus, p_{adv}^* for δ is generally higher than that of δ' where $\delta > \delta'$. This holds for p_{relay}^* as well. However, for any fixed δ , node v_1 can see a distinction between p_{relay}^* and p_{adv}^* as shown in Figure 8. A similar trend to that of Figure 7 can be seen for the distributions of p_{adv}^* and p_{relay}^* for each value of δ . The interesting result is that even for $\delta = 0$, *i.e.* we include no redundancy or hash, node v_1 is able to distinguish an adversarial relay from a well-behaving relay.

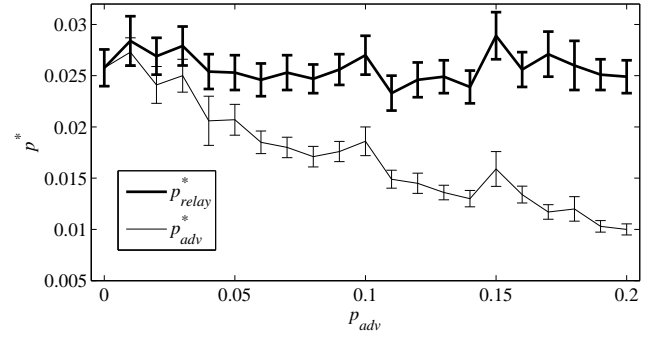


Fig. 7: The average value of p^* with well-behaving relay (denoted p_{relay}^*) and adversarial relay (denoted p_{adv}^*) over 1000 random iterations of algebraic watchdog. The error bars represent the variance, var_{relay} and var_{adv} . We set $m = 3$, $n = 10$, $\delta = 2$, and $p_s = p_{m+1,1} = 10\%$. We vary p_{adv} , the adversary's error injection rate.

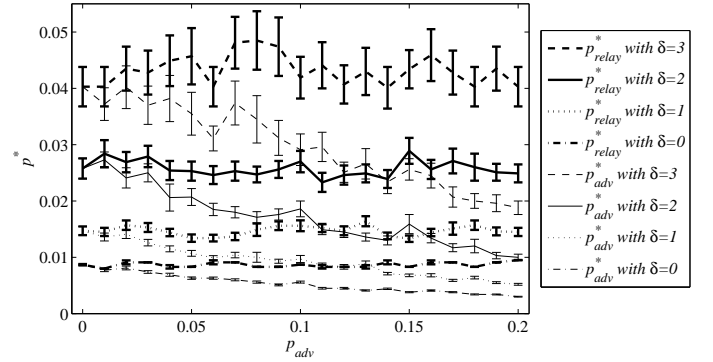


Fig. 8: The average value of p^* with well-behaving relay (denoted p_{relay}^*) and adversarial relay (denoted p_{adv}^*) over 1000 random iterations of algebraic watchdog. We vary the value of δ , the length of the hash function used, and p_{adv} , the adversary's error injection rate. The error bars represent the variance, var_{relay} and var_{adv} . We set $m = 3$, $n = 10$, and $p_s = p_{m+1,1} = 10\%$.

Results in Figure 9 confirms our intuition that the better v_1 's ability to collect information from v_i 's, *me1*, the better its detection ability. If node v_1 is able to infer better or overhear x_i with little or no errors, the better its inference on what the relay node should be transmitting. Thus, as overhearing channel progressively worsens (p_s increases), v_1 's ability to detect malicious behavior deteriorates; thus, unable to distinguish between a malicious and a well-behaving relay.

Finally, we note the effect of m , the number of nodes in the network, in Figure 10. Node v_1 's ability to check v_{m+1} is reduced with m . When m increases, the number of messages v_1 has to infer increases, which increases the uncertainty within the system. However, it is important to note that as m increases, there are more nodes v_i 's, $i \in [1, m]$ that can independently perform checks on v_{m+1} . This affect is not captured by the results shown in Figure 10.

X. CONCLUSIONS AND FUTURE WORK

We proposed the *algebraic watchdog*, in which nodes can verify their neighbors probabilistically and police them locally

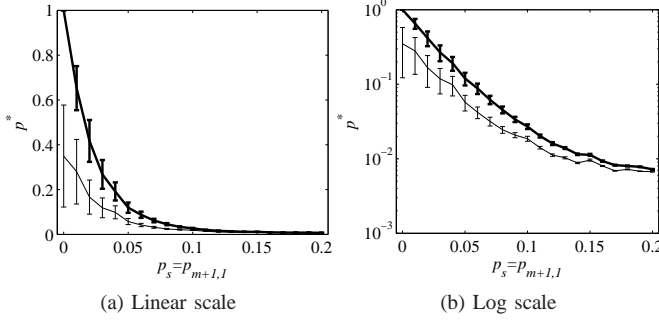


Fig. 9: The average value of p^* with well-behaving relay (denoted p_{relay}^*) and adversarial relay (denoted p_{adv}^*) over 1000 random iterations of algebraic watchdog. We vary the value of $p_s = p_{m+1,1}$, the quality of overhearing channels. The error bars represent the variance, var_{relay} and var_{adv} . We set $m = 3$, $n = 10$, and $p_{adv} = 10\%$.

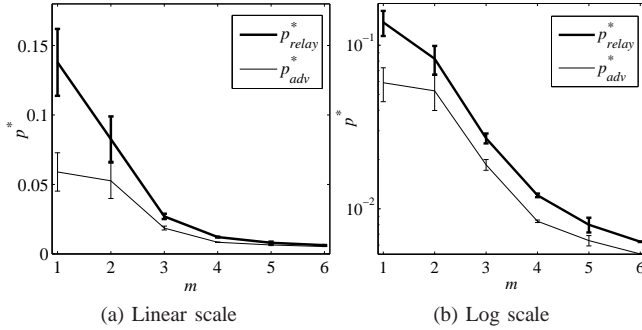


Fig. 10: The average value of p^* with well-behaving relay (denoted p_{relay}^*) and adversarial relay (denoted p_{adv}^*) over 1000 random iterations of algebraic watchdog. We vary the value of m , the number of nodes using v_{m+1} as a relay. The error bars represent the variance, var_{relay} and var_{adv} . We set $m = 3$, $n = 10$, and $p_s = p_{m+1,1} = p_{adv} = 10\%$.

by the means of overheard messages in a coded network. Using the algebraic watchdog scheme, nodes can compute a probability of consistency, p^* , which can be used to detect malicious behavior. Once a node has been identified as malicious, these nodes can either be punished, eliminated, or excluded from the network by using reputation based schemes such as [9][23].

We first presented a graphical model and an analysis of the algebraic watchdog for two-hop networks. We then extended the algebraic watchdog to multi-hop, multi-source networks. We provided a trellis-like graphical model for the detection inference process, and an algorithm that may be used to compute the probability that a downstream node is consistent with the overheard information. We analytically showed how the size of the hash function, minimum distance of the error-correcting code used, as well as the quality of the overhearing channel can affect the probability of detection. Finally, we presented simulation results that support our analysis and intuition.

Our ultimate goal is to design a network in which the participants check their neighborhood locally to enable a secure global network - i.e. a self-checking network. Possible future work includes developing inference methods and

approximation algorithms to decide efficiently aggregate local trust information to a global trust state.

REFERENCES

- [1] J.-P. Hubaux, L. Buttyán, and S. Capkun, "The quest for security in mobile ad hoc networks," in *Proceedings of the 2nd ACM MobiHoc*. ACM, 2001, pp. 146–155.
- [2] L. Zhou and Z. Haas, "Securing ad hoc networks," *Network, IEEE*, vol. 13, no. 6, pp. 24–30, 1999.
- [3] J. Douceur, "The sybil attack," in *Peer-to-Peer Systems*, ser. Lecture Notes in Computer Science. Springer Berlin / Heidelberg, 2002, vol. 2429, pp. 251–260.
- [4] C. Karlof and D. Wagner, "Secure routing in wireless sensor networks: attacks and countermeasures," *Ad Hoc Networks*, vol. 1, no. 2-3, pp. 293–315, 2003.
- [5] R. Perlman, "Network layer protocols with Byzantine robustness," Ph.D. dissertation, Massachusetts Institute of Technology, Cambridge, MA, October 1988.
- [6] M. Castro and B. Liskov, "Practical Byzantine fault tolerance," in *Symposium on Operating Systems Design and Implementation (OSDI)*, February 1999.
- [7] L. Lamport, R. Shostak, and M. Pease, "The Byzantine generals problem," *ACM Transactions on Programming Languages and Systems*, vol. 4, pp. 382–401, 1982.
- [8] P. Papadimitratos and Z. J. Haas, "Secure routing for mobile ad hoc networks," in *Proceedings of the SCS Communication Networks and Distributed Systems Modeling and Simulation Conference*, 2002.
- [9] S. Marti, T. J. Giuli, K. Lai, and M. Baker, "Mitigating routing misbehavior in mobile ad hoc networks," in *Proceedings of the 6th annual international conference on Mobile computing and networking*. ACM, 2000, pp. 255–265.
- [10] M. Kim, M. Médard, J. Barros, and R. Kötter, "An algebraic watchdog for wireless network coding," in *Proceedings of IEEE ISIT*, June 2009.
- [11] R. Ahlswede, N. Cai, S.-Y. R. Li, and R. W. Yeung, "Network information flow," *IEEE Transactions on Information Theory*, vol. 46, pp. 1204–1216, 2000.
- [12] R. Koetter and M. Médard, "An algebraic approach to network coding," *IEEE/ACM Transaction on Networking*, vol. 11, pp. 782–795, 2003.
- [13] G. Liang, R. Agarwal, and N. Vaidya, "When watchdog meets coding," in *Proceedings of IEEE INFOCOM*, March 2010.
- [14] D. Lun, M. Médard, R. Koetter, and M. Effros, "On coding for reliable communication over packet networks," *Physical Communication*, vol. 1, no. 1, pp. 3–20, March 2008.
- [15] R. W. Yeung and N. Cai, "Network error correction," *Communications in Information and Systems*, no. 1, pp. 19–54, 2006.
- [16] S. Jaggi, M. Langberg, S. Katti, T. Ho, D. Katabi, and M. Médard, "Resilient network coding in the presence of Byzantine adversaries," in *Proceedings of IEEE INFOCOM*, March 2007, pp. 616–624.
- [17] R. Koetter and F. R. Kschischang, "Coding for errors and erasures in random network coding," *IEEE Transactions on Information Theory*, vol. 54, no. 8, pp. 3579–3591.
- [18] M. Kim, M. Médard, and J. Barros, "Countering Byzantine adversaries with network coding: An overhead analysis," in *Proceedings of MILCOM*, 2008.
- [19] D. B. Johnson, "Routing in ad hoc networks of mobile hosts," in *Proceedings of the Workshop on Mobile Computing Systems and Applications*, 1994, pp. 158–163.
- [20] U. M. Maurer, "Authentication theory and hypothesis testing," *IEEE Transaction on Information Theory*, vol. 46, pp. 1350–1356, 2000.
- [21] M. Dietzfelbinger, J. Gil, Y. Matias, and N. Pippenger, "Polynomial hash functions are reliable," in *Proceedings of the 19th International Colloquium on Automata, Languages and Programming*, vol. 623. Springer-Verlag, 1992, pp. 235–246.
- [22] P. Elias, "List decoding for noisy channels," *Technical Report 335, Research Laboratory of Electronics, MIT*, 1957.
- [23] S. Ganeriwal, L. K. Balzano, and M. B. Srivastava, "Reputation-based framework for high integrity sensor networks," *ACM Transactions on Sensor Networks*, vol. 4, no. 3, pp. 1–37, 2008.