



Aalborg Universitet

AALBORG UNIVERSITY  
DENMARK

## Energy-Efficient Design for RIS-assisted UAV communications in beyond-5G Networks

Deshpande, Anay Ajit; Vaca-Rubio, Cristian J.; Mohebi, Salman; Salami, Dariush; Carvalho, Elisabeth de; Popovski, Petar; Sigg, Stephan; Zorzi, Michele; Zanella, Andrea

*Published in:*

2022 20th Mediterranean Communication and Computer Networking Conference (MedComNet)

*DOI (link to publication from Publisher):*

[10.1109/MedComNet55087.2022.9810453](https://doi.org/10.1109/MedComNet55087.2022.9810453)

*Publication date:*

2022

*Document Version*

Accepted author manuscript, peer reviewed version

[Link to publication from Aalborg University](#)

*Citation for published version (APA):*

Deshpande, A. A., Vaca-Rubio, C. J., Mohebi, S., Salami, D., Carvalho, E. D., Popovski, P., Sigg, S., Zorzi, M., & Zanella, A. (2022). Energy-Efficient Design for RIS-assisted UAV communications in beyond-5G Networks. In *2022 20th Mediterranean Communication and Computer Networking Conference (MedComNet)* (pp. 158-165). Article 9810453 IEEE Communications Society. <https://doi.org/10.1109/MedComNet55087.2022.9810453>

### General rights

Copyright and moral rights for the publications made accessible in the public portal are retained by the authors and/or other copyright owners and it is a condition of accessing publications that users recognise and abide by the legal requirements associated with these rights.

- Users may download and print one copy of any publication from the public portal for the purpose of private study or research.
- You may not further distribute the material or use it for any profit-making activity or commercial gain
- You may freely distribute the URL identifying the publication in the public portal -

### Take down policy

If you believe that this document breaches copyright please contact us at [vbn@aub.aau.dk](mailto:vbn@aub.aau.dk) providing details, and we will remove access to the work immediately and investigate your claim.

© 2022 IEEE. This is the author's version of an article that has been published by IEEE. Personal use of this material is permitted. Permission from IEEE must be obtained for all other uses, in any current or future media, including reprinting/republishing this material for advertising or promotional purposes, creating new collective works, for resale or redistribution to servers or lists, or reuse of any copyrighted component of this work in other works.

# Energy-Efficient Design for RIS-assisted UAV communications in beyond-5G Networks

Anay Ajit Deshpande<sup>1,\*</sup>, Cristian J. Vaca-Rubio<sup>2</sup>, Salman Mohebi<sup>1</sup>, Dariush Salami<sup>3</sup>,  
Elisabeth de Carvalho<sup>2</sup>, Petar Popovski<sup>2</sup>, Stephan Sigg<sup>3</sup>, Michele Zorzi<sup>1</sup>, Andrea Zanella<sup>1</sup>

<sup>1</sup>Department of Information Engineering, University of Padova, Padova, Italy

<sup>2</sup>Department of Electronic Systems, Aalborg University, Aalborg, Denmark

<sup>3</sup>Department of Communications and Networking, Aalto University, Espoo, Finland

{deshpande\*,mohebi,zorzi,zanella}@dei.unipd.it, {cjvr,edc,petarp}@es.aau.dk, {dariush.salami, stephan.sigg}@aalto.fi

\*Corresponding Author

**Abstract**—The usage of Reconfigurable Intelligent Surfaces (RIS) in conjunction with Unmanned Aerial Vehicles (UAVs) is being investigated as a way to provide energy-efficient communication to ground users in dense urban areas. In this paper, we devise an optimization scenario to reduce overall energy consumption in the network while guaranteeing certain Quality of Service (QoS) to the ground users in the area. Due to the complex nature of the optimization problem, we provide a joint UAV trajectory and RIS phase decision to minimize transmission power of the UAV and Base Station (BS) that yields good performance with lower complexity. So, the proposed method uses a Successive Convex Approximation (SCA) to iteratively determine a joint optimal solution for UAV Trajectory, RIS phase and BS and UAV Transmission Power. The simulation results show the algorithm provides a minimum guaranteed rate while minimising transmission power of UAV and BS.

**Index Terms**—Energy Efficient Network, Unmanned Aerial Vehicles, Reconfigurable Intelligent Surfaces

## I. INTRODUCTION

Increasing demand for sustainable and flexible connectivity specifically for either semi-urban/rural areas [1], [2] or disaster scenarios for monitoring and surveillance [3], [4], has led to focus on the usage of Unmanned Aerial Vehicles (UAVs) and Reconfigurable Intelligent Surfaces (RIS) for enhancing the network coverage and, thereby, the service availability of cellular networks. The conceptual design of RIS consists of several reflective elements which can be configured so as to reflect and, in particular, beamform a signal towards a particular direction. Recently, there have been certain works that have provided definitions and optimization scenarios to tackle the direct links between UAVs and User Equipments (UEs) as well as links between UAV and UE with the aid of RIS [5]–[8]. However, the issues of the existence and capacity limitation of the link from Base Stations (BSs) to UAVs have not been considered so far in conjunction with the issue of optimizing the UAV movement and RIS configuration. This should not be overlooked as the performance of the system

This project has received funding from the European Union's Horizon 2020 research and innovation programme under the Marie Skłodowska-Curie Grant agreement No. 813999.

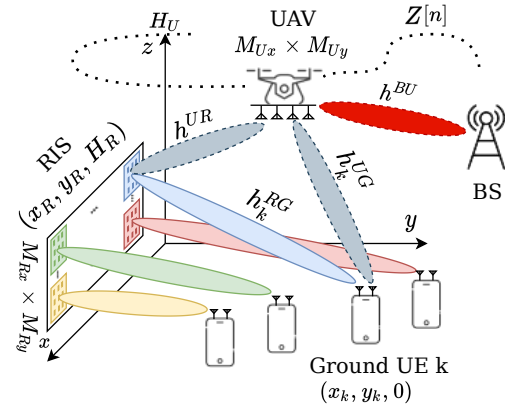


Fig. 1. The problem scenario

clearly depends on the whole path from BS to the UEs. Indeed, UAVs and RIS can be used to create mobile micro cells to serve temporary hotspots, i.e., areas with very high service requirement at a certain time.

One of the major hurdles while using both these technologies is the energy consumption of the system as a whole. UAVs, especially quadcopters, generally run on small batteries and the energy consumption is very high when the UAV is in flight. Therefore, to provide sustained coverage to the UEs with high Quality of Service (QoS) requirements, the trajectory of the UAV has to be optimized. The use of RIS, which can improve the coverage in certain areas, may help reducing the need for UAVs to travel further, with a small trade-off on the energy consumed for RIS operation [5], [9], [10]. To summarize, in this paper we explore the possibility of the combined usage of UAVs and RISs to reduce the energy consumption of the entire system, while providing a certain level of QoS to the UEs in the area. Fig. 1 denotes the overall scenario in question. The UAV acts as a mobile BS relay that can establish Line-of-Sight (LoS) links with the UEs and the RIS, something that might not be always possible for the fixed BS. This can potentially extend the area of coverage (i.e., of



$$\begin{aligned}
C4: & \sum_{n=1}^N P^U[n] \leq E_{max}^{UAV}; \\
C5: & \mathbf{Z}[n+1] = \mathbf{Z}[n] + \mathbf{v}[n]\tau, \quad n = 1, \dots, N-1; \\
C6: & \|\mathbf{v}[n]\| \leq V_{max}, \quad \forall n; \\
C7: & \|\mathbf{v}[n+1] - \mathbf{v}[n]\| \leq V_{acc}\tau, \quad n = 1, \dots, N-1; \\
C8: & \|\mathbf{v}[n]\| \geq 0 \quad \forall n; \\
C9: & \mathbf{Z}[1] = \mathbf{Z}_0; \\
C10: & \mathbf{Z}[N] = \mathbf{Z}_F.
\end{aligned}$$

We remark that, as shown in Fig. 1 the UAV has two parallel links to each UE: one directional and the other with the RIS sector associated to the UE. The multipath approach offers a greater chance to satisfy the service requirement by jointly optimizing the UAV trajectory  $\mathbf{Z}[n]$  and RIS phase configuration  $\Phi$ , while minimizing the transmission power of the entire system. To facilitate the UEs to determine the multipath connections, the BS has to continuously communicate the beams to be used to the UE taking into account the mobility information of the UEs and the trajectory of the UAV. As mentioned before, the BS may communicate this information over long-range low-rate technologies such as LoRa [13].

### III. ANALYTICAL SOLUTION

The optimization problem discussed in the previous section is clearly non-convex and, hence, quite difficult to solve in itself. But we can determine a feasible solution by considering the initial transmission powers for the UAV and BS so as to jointly optimize the UAV trajectory and RIS phase and, then, minimize the transmission powers for the given trajectory and phase configuration within the constraints in (6). This method is explained in detail in the following subsections.

#### A. Joint UAV Trajectory and RIS phase optimization

Joint UAV Trajectory and RIS phase optimization can be facilitated considering a particular  $\mathbf{P}$  over different links [14]. As shown in the Fig. 2, the BS to UAV, UAV to UE, UAV to RIS and RIS to UE links are assumed to be deterministic LoS channels. For ease of notation, in the following we indicate the nodes involved in a link using the subscript  $U, B, R$  and  $G$  for UAV, BS, RIS and (ground) UE, respectively. The channel information is supposed to be available at the UAV and the UEs. Hence, to maximise the transmission efficiency, a Maximum Ratio Transmission (MRT) is applied, i.e., the transmission beamformer for any  $k^{th}$  UE as well as for the UAV can be defined as  $\mathbf{w}^{BU} = \frac{1}{\sqrt{M_B}} \mathbf{h}^{BU}$ ,  $\mathbf{w}_k^{UG} = \frac{1}{\sqrt{M_U}} \mathbf{h}^{UG}$  and  $\mathbf{w}^{UR} = \frac{1}{\sqrt{M_U}} \mathbf{h}^{UR}$ . The overall channel gains can hence be obtained as

$$H^{BU}[n] = (\mathbf{h}^{BU}[n])^H \mathbf{h}[n] \mathbf{w}^{BU}[n] = \frac{\sqrt{M_B} \alpha_0}{d^{BU}[n]}; \quad (7)$$

$$H_k^{UG}[n] = (\mathbf{h}_k^{UG}[n])^H \mathbf{h}[n] \mathbf{w}_k^{UG}[n] = \frac{\sqrt{M_U} \alpha_0}{d_k^{UG}[n]}; \quad (8)$$

$$H_k^{URG}[n] = (\mathbf{h}_k^{RG}[n])^H \Phi_k[n] \mathbf{H}^{UR}[n] \mathbf{w}^{UR}[n]$$

$$\begin{aligned}
&= \sqrt{M_U} (\mathbf{h}_k^{RG}[n])^H \Phi_k[n] \mathbf{h}^{RU}[n] \\
&= \frac{\sqrt{M_U} M_R \alpha_0}{d_k^{RG} d^{UR}[n]}.
\end{aligned} \quad (9)$$

To determine the  $H_k^{URG}[n]$  coefficients correctly, the optimal phase control policy for the phase shift in every timestep (which maximizes the reflection-mode channel gain by aligning the phase of the RIS to match those of the channel) is given by

$$\begin{aligned}
\Phi_{m_{Rx}, m_{Ry}, k} &= \frac{2\pi \Delta_R}{\lambda_c} [(m_{Rx} - 1)(\sin \theta^{RU} \cos \xi^{RU} \\
&+ \sin \theta_k^{RG} \cos \xi_k^{RG}) + (m_{Ry} - 1)(\sin \theta^{RU} \sin \xi^{RU} \\
&+ \sin \theta_k^{RG} \sin \xi_k^{RG})],
\end{aligned} \quad (10)$$

where  $\theta^{RU}$  and  $\xi^{RU}$  are the Angle of Arrivals (AoAs) and  $\theta^{RG}$  and  $\xi^{RG}$  are the Angle of Departures (AoDs) as defined in Fig. 2. The assumption for RIS phase configuration is that there is a wired direct link to the RIS controller and that, delay and imperfect phase configuration are negligible.

Note that, the problem is still non-convex due to C1 and C2 w.r.t.  $\mathbf{Z}$ . In order to overcome this issue, we add three slack variables  $\lambda_{k,i}[n]$  and  $\pi[n]$ . In this way, we keep the constraints C1-9, and the problem can be reformulated as follows

$$\begin{aligned}
\min_{\mathbf{Z}, \mathbf{V}, \Lambda, \mathbf{M}, \Pi} & \sum_{n=1}^N P_U^T[n] + \sum_{n=1}^N \sum_{k=1}^K \sum_{i=1}^2 P_{i,k}^T[n] \\
s.t. &
\end{aligned} \quad (11)$$

$$C1 - C10;$$

$$C11: \|\mathbf{Z}_k^{UE} - \mathbf{Z}[n]\|^2 \leq \lambda_{k,1}[n], k \in \{1, \dots, K\};$$

$$C12: \|\hat{\mathbf{Z}}_k^{RIS} - \mathbf{Z}[n]\|^2 \leq \lambda_{k,2}[n], k \in \{1, \dots, K\};$$

$$C13: \|\mathbf{Z}^{BS} - \mathbf{Z}[n]\|^2 \leq \mu[n];$$

$$C14: \|\mathbf{v}[n]\|^2 \geq \pi^2[n];$$

$$C15: \pi[n] \geq 0;$$

where  $\Lambda = \{\lambda_{k,i}[n], \forall n, k, i\}$ ,  $\mathbf{M} = \{\mu[n], \forall n\}$  and  $\Pi = \{\pi[n], \forall n\}$ . Similarly to what proposed in [5], we overcome the non-convex constraints C1 and C2 via Successive Convex Approximation (SCA) in an iterative way. We can compute a lower bound of the instant achievable rate for each user by modifying  $\lambda_{k,i}[n]$ ,  $\mu[n]$  and  $\pi[n]$  and calculating the first-order Taylor expansion which is a global under-estimator of the rate convex function [15]. Hence, omitting the argument  $[n]$  for notation clarity, we redefine the SNR expression as

$$\gamma^U = \frac{\hat{\gamma}^U}{\mu}; \quad (12)$$

$$\gamma^{k,i} = \frac{\hat{\gamma}^{k,i}}{\lambda_{k,i}}, \quad \forall i = \{1, 2\}, \quad (13)$$

where,

$$\hat{\gamma}^U = \frac{P_U^T M_B \alpha_0^2}{\sigma_n^2}; \quad (14)$$

$$\hat{\gamma}^{k,1} = \frac{P_{1,k}^T M_U \alpha_0^2}{\sigma_n^2}; \quad (15)$$

$$\hat{\gamma}^{k,2} = \frac{P_{2,k}^T M_U M_R^2 \alpha_0^2}{(d_k^{\text{RG}})^2 \sigma_n^2}. \quad (16)$$

Using (12) and (13) in (3) and (4) respectively and applying the first-order Taylor expansions in the  $j$ -th iteration for a particular value of  $\lambda_{k,i}^j[n]$ ,  $\mu^j[n]$  and  $\mathbf{v}^j[n]$ , the lower bound for the rates is given by

$$\begin{aligned} \hat{R}_k^i[n] &\geq \\ (\hat{R}_k^i[n])^j &= \log_2 \left( 1 + \frac{\gamma^{i,k}[n]}{\lambda_{k,i}^j[n]} \right) \\ &\quad - \frac{\gamma^{i,k}[n](\lambda_{k,i}[n] - \lambda_{k,i}^j[n])}{\lambda_{k,i}^j[n](\lambda_{k,i}^j[n] + \gamma^{i,k}[n]) \ln 2}, \end{aligned} \quad (17)$$

$$\begin{aligned} \hat{R}^U[n] &\geq \\ (\hat{R}^U[n])^j &= \log_2 \left( 1 + \frac{\gamma^U[n]}{\mu^j[n]} \right) \\ &\quad - \frac{\gamma^U[n](\mu[n] - \mu^j[n])}{\mu^j[n](\mu^j[n] + \gamma^U[n]) \ln 2}, \end{aligned} \quad (18)$$

$$\|\mathbf{v}[n]\|^2 \geq \|\mathbf{v}^j[n]\|^2 + 2[\mathbf{v}^j[n]]^T(\mathbf{v}[n] - \mathbf{v}^j[n]). \quad (19)$$

where  $(\hat{R}_k^i[n])^j$  and  $(\hat{R}^U[n])^j$  are the lower bound achievable rates for the  $k^{\text{th}}$  UE and UAV respectively, in the  $j^{\text{th}}$  iteration of SCA. The in-flight power consumption for UAV can be written as

$$P^U[n] = P_o \left( 1 + \frac{3\|\mathbf{v}[n]\|^2}{\Omega^2 r^2} \right) + \frac{P_p v_0}{\pi[n]} + \frac{1}{2} d_0 \rho_s A_r \|\mathbf{v}[n]\|^3. \quad (20)$$

Applying the lower bounds in (17), (18) and (19) in (11) we obtain a convex problem defined as

$$\begin{aligned} \min_{\mathbf{Z}, \mathbf{V}, \mathbf{A}, \mathbf{M}, \mathbf{\Pi}} & \sum_{n=1}^N P_U^T[n] + \sum_{n=1}^N \sum_{k=1}^K \sum_{i=1}^2 P_{i,k}^T[n] \\ \text{s.t.} & \\ \hat{C}1 : & \sum_{i=1}^2 (\hat{R}_k^i[n])^j \geq R_{\min}, \forall k; \\ \hat{C}2 : & (\hat{R}^U[n])^j \geq \sum_{k=1}^K \sum_{i=1}^2 (\hat{R}_{k,i})^j[n]; \\ \hat{C}14 : & \|\mathbf{v}^j[n]\|^2 + 2[\mathbf{v}^j[n]]^T(\mathbf{v}[n] - \mathbf{v}^j[n]) \geq \pi^2[n]; \\ & C3 - C15, \end{aligned} \quad (21)$$

which solving it provides an upper bound of the problem in (11). We iteratively update the feasible solution  $\mathbf{Z}^j[n]$ ,  $\lambda_{k,i}^j[n]$ ,  $\mu^j[n]$ ,  $\mathbf{v}^j[n]$  and  $\pi^j[n]$  by solving the convex problem in (21) using the CVX standard optimization solver [16] in the  $j$ -th iteration.

### B. Transmission Power Control

For a determined UAV trajectory and RIS phase, the UAV and BS transmission power can be minimized. To define the transmission power minimization with a predefined trajectory  $\mathbf{Z}$ , the optimization problem in (6) can be rewritten with

constraints  $C3 - C10$  already satisfied for the pre-defined trajectory  $\mathbf{Z}$ . So the optimization problem can be written as

$$\begin{aligned} \min_{\mathbf{P}} & \sum_{k=1}^K \sum_{n=1}^N \sum_{i=1}^3 P_i^T[n] \\ \text{s.t.} & \\ C1 : & \sum_{i=1}^2 R_k^i[n] \geq R_{\min}, \forall k, n; \\ C2 : & C[n] \geq \sum_{k=1}^K \sum_{i=1}^2 R_k^i[n], \forall n. \end{aligned} \quad (22)$$

The constraints  $C1$  and  $C2$  are concave with respect to the  $\mathbf{P}$ . Hence it can be easily solved by employing SCA using the Taylor's expansions, which are global over-estimators of the concave functions [15]. To do so, the SNR expressions are rewritten as

$$\gamma^U[n] = P_U^T[n] \kappa_U[n]; \quad (23)$$

$$\gamma^{i,k}[n] = P_{i,k}^T[n] \kappa_{k,i}[n], \forall i \in \{1, 2\}, k; \quad (24)$$

where,

$$\kappa_U[n] = \left\{ \frac{\sqrt{M_B} \alpha_0}{d^{\text{BU}}[n] \sigma} \right\}^2, \quad (25)$$

$$\kappa_{k,1}[n] = \left\{ \frac{\sqrt{M_U} \alpha_0}{d^{\text{UG}}[n] \sigma} \right\}^2, \quad (26)$$

$$\kappa_{k,2}[n] = \left\{ \frac{\sqrt{M_U} \alpha_0}{d^{\text{URG}}[n] \sigma} \right\}^2. \quad (27)$$

Using (23) and (24) in (3) and (4) respectively and applying the first-order Taylor expansions, we get

$$\begin{aligned} \hat{R}^U[n] &\leq \\ (\hat{R}^U[n])^j &= \log_2 \left( 1 + (P_U^T)^j |\kappa_U[n]|^2 \right) \\ &\quad + \frac{|\kappa_U[n]|^2 (P_U^T - (P_U^T)^j)}{(1 + (P_U^T)^j |\kappa_U[n]|^2) \ln(2)}, \end{aligned} \quad (28)$$

$$\begin{aligned} \hat{R}_k^i[n] &\leq \\ (\hat{R}_k^i[n])^j &= \log_2 \left( 1 + (P_{i,k}^T)^j |\kappa_{k,i}[n]|^2 \right) \\ &\quad + \frac{|\kappa_{k,i}[n]|^2 (P_{i,k}^T - (P_{i,k}^T)^j)}{(1 + (P_{i,k}^T)^j |\kappa_{k,i}[n]|^2) \ln(2)}, \forall i \in \{1, 2\}. \end{aligned} \quad (29)$$

Hence, the optimization problem (22) can be rewritten as

$$\begin{aligned} \min_{\mathbf{P}} & \sum_{n=1}^N P_U^T[n] + \sum_{n=1}^N \sum_{k=1}^K \sum_{i=1}^2 P_{i,k}^T[n] \\ \text{s.t.} & \end{aligned} \quad (30)$$

---

**Algorithm 1:** Joint Trajectory, RIS Phase Configuration and Transmission Power Control algorithm

---

**Result:** UAV Trajectory  $\mathbf{Z}$ , UAV Velocity  $\mathbf{V}$ ,  $P^{Total}$   
Initialize trajectory  $\mathbf{Z}$ ,  $\mathbf{V}$ , maximum number of iteration  $J_{max}$ , initial iteration index  $j = 0$ , Particular UAV and BS transmission power  $\mathbf{P}$ , Initial trajectory  $\mathbf{Z}$ , Initial velocity  $\mathbf{V}$  and Convergence tolerance  $\epsilon$ ;  
**while**  $j \leq J_{max}$  **or**  $\frac{P_{Total}^j - P_{Total}^{j-1}}{P_{Total}^j} \leq \epsilon$  **do**  
    Set  $j = j + 1$  and  
     $\{\mathbf{P}^j, \mathbf{V}^j, \mathbf{\Lambda}^j, \mathbf{M}^j, \mathbf{\Pi}^j\} = \{\mathbf{P}, \mathbf{V}, \mathbf{\Lambda}, \mathbf{M}, \mathbf{\Pi}\}$ ;  
    Solving optimization problem (21) to obtain  $\mathbf{Z}, \mathbf{V}, \mathbf{\Lambda}, \mathbf{M}$  and  $\mathbf{\Pi}$  for a Particular  $\mathbf{P}$ ;  
    Solving optimization problem (30) to obtain  $\mathbf{P}$  and  $P_{Total}$  for a Particular  $\mathbf{Z}, \mathbf{V}, \mathbf{\Lambda}, \mathbf{M}, \mathbf{\Pi}$   
    Update  $P_{Total}^j = P_{Total}$ ;  
**end**

---

TABLE II  
SIMULATION PARAMETERS

Parameter	Value
Area	500m $\times$ 500m
Number of Users (K)	3
Position of Users	[20, 450; 250, 0; 500, 200]
Position of Base Station	[0, 0]
Position of RIS	[200, 500]
Number of RIS Elements per user	64
Number of UAVs	1
Initial/Final Position of UAV ( $Z_0/Z_F$ )	[0, 0; 500, 500]
Maximum Velocity	20 m/s
Maximum Acceleration	4 m/s <sup>2</sup>
Height of the [UAV, BS, RIS]	[20, 15, 10] m
Path Loss ( $\alpha_0$ )	61 dBm
Noise Power Spectral Density ( $\sigma^2$ )	-174 dBm

$$C1: \sum_{i=1}^2 (\hat{R}_k^i[n])^j[n] \geq R_{min}, \forall k, n;$$

$$C2: (\hat{R}^U[n])^j[n] \geq \sum_{k=1}^K \sum_{i=1}^2 (\hat{R}_k^i)^j[n], \forall n.$$

Similar to the UAV trajectory and RIS phase optimization problem, this optimization can be solved using the CVX standard optimization solver. Algorithm 1 provides the pseudocode to solve the optimization problem.

#### IV. RESULTS AND DISCUSSION

The solution discussed in the previous section is implemented in MATLAB simulation environment. The base simulation parameters are defined by TABLE II. The simulation environment is shown in the Fig. 3. As visible from the figure, over the SCA iterations, the UAV trajectory and transmission power is optimized using Algorithm 1 until it converges, i.e., UAV trajectory and transmission power are no longer improved. Different configurations in terms of static number of UEs in the network have been simulated. Looking at the

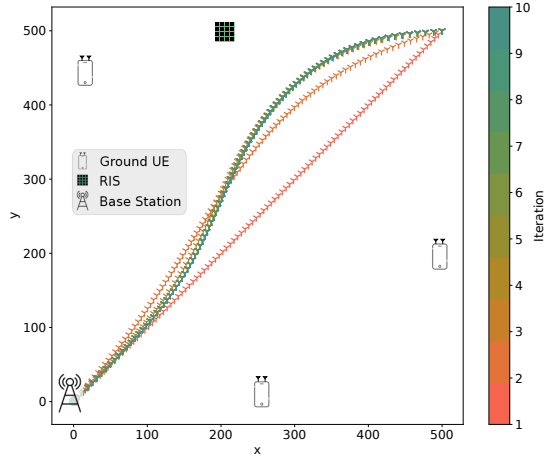


Fig. 3. Optimization of the UAV trajectory and transmission power over SCA iterations. The marked lines represent the UAV trajectories obtained during the execution of the iterative algorithm. The straight line is the initial solution, while the darkest one is the final solution.

total transmission power used along the optimized trajectory, that is, the summation of the power from the BS and the transmission power for the UAV, Fig. 4 shows now that the power increases with the number of users in the network for different values of  $R_{min}$ . To be noted that the curve bends when the number of users increases, since their distance to the BS, UAV and RIS reduces. Also, the total power increases with the minimum rate requirement. Another significant observation is the change in average power consumption per set of users for different rates. The change in principle should be exponential, i.e., linear increase in rate should require exponential increase in power. But, to follow this criteria, the distance has to be constant, i.e., the trajectory of the UAV has to be constant for all the different rates. But, as visible in Fig. 5, which shows the optimal trajectories for different values of  $R_{min}$ , the optimal trajectory for  $R_{min} = 0.057$  is able to deviate more from the straight line trajectory as it can still satisfy the low required minimum rate for the UEs. On the contrary, the optimal trajectory for  $R_{min} = 0.757$  is able to deviate less from the straight line trajectory than that for  $R_{min} = 0.057$  as the required minimum rate is higher. Note that, we only show optimal trajectories for  $R_{min} = \{0.057, 0.257, 0.557, 0.757\}$  to be able to visually distinguish between the optimal trajectories for the different values of  $R_{min}$ . The optimal trajectories for the remaining values of  $R_{min}$  are between the optimal trajectory for  $R_{min} = 0.057$  and  $R_{min} = 0.757$ . This trend for optimal trajectories is also true for the scenarios involving one, two, four and five UEs. Hence, the average power consumption for UEs, as shown in Fig. 4, does not follow an exponential criteria due to change in optimal trajectory for different values of  $R_{min}$ . Additionally, the system is very sensitive to the network configuration, i.e., it is inherently limited with respect to number of UEs that can be served simultaneously in a single flight. To improve the scalability of the system, the usage of reinforcement learning can be explored, which has been left



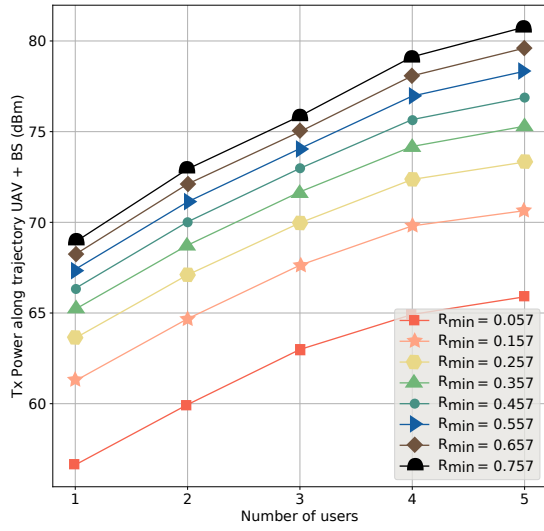


Fig. 4. Total Transmission Power (UAV and BS) when increasing the number  $K$  of static UEs for different values of  $R_{min}$ .

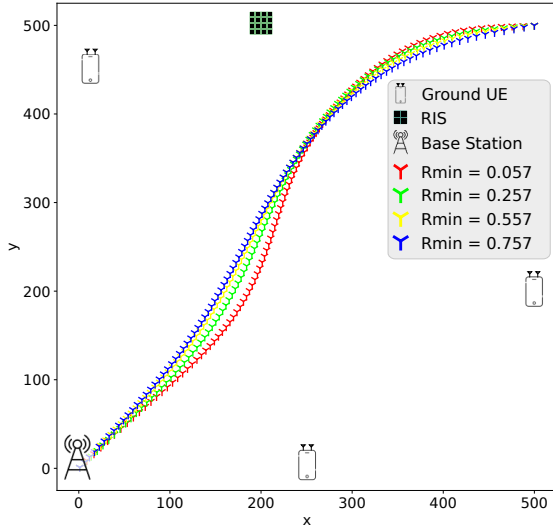


Fig. 5. Different Optimal Trajectories for the UAV for three UEs and for different values of  $R_{min}$ .

for future work.

## V. CONCLUSION

Beyond 5G and 6G Networks are expected to provide a certain service level while reducing the power consumption of the system. To this end, we discussed the usage of UAVs and RIS as a way to guarantee certain service requirements while trying to minimise the power consumption of the system.

In this work, we devised jointly, a method to roughly optimize UAV trajectory, RIS phase and UAV transmission power consumption to provide a certain guaranteed service rate to the UEs on the ground. We showed the usage of convex approximation techniques can provide a feasible solution. Moving forward, the usage of reinforcement learning seems

very attractive especially due to the sensitive nature of convex approximation schemes to different network configurations.

## REFERENCES

- [1] Y. Y. Munaye, R.-T. Juang, H.-P. Lin, and G. B. Tarekegn, "Resource Allocation for Multi-UAV Assisted IoT Networks: A Deep Reinforcement Learning Approach," in *2020 International Conference on Pervasive Artificial Intelligence (ICPAI)*. IEEE, 2020, pp. 15–22.
- [2] Y. Liu, X. Liu, X. Mu, T. Hou, J. Xu, M. Di Renzo, and N. Al-Dhahir, "Reconfigurable intelligent surfaces: Principles and opportunities," *IEEE Communications Surveys & Tutorials*, 2021.
- [3] P.-M. Olsson, J. Kvarnström, P. Doherty, O. Burdakov, and K. Holmberg, "Generating UAV communication networks for monitoring and surveillance," in *2010 11th international conference on control automation robotics & vision*. IEEE, 2010, pp. 1070–1077.
- [4] C. Luo, W. Miao, H. Ullah, S. McClean, G. Parr, and G. Min, "Unmanned aerial vehicles for disaster management," in *Geological disaster monitoring based on sensor networks*. Springer, 2019, pp. 83–107.
- [5] Y. Cai, Z. Wei, S. Hu, D. W. K. Ng, and J. Yuan, "Resource allocation for power-efficient IRS-assisted UAV communications," in *2020 IEEE International Conference on Communications Workshops (ICC Workshops)*. IEEE, 2020, pp. 1–7.
- [6] S. Li, B. Duo, X. Yuan, Y.-C. Liang, and M. Di Renzo, "Reconfigurable intelligent surface assisted UAV communication: Joint trajectory design and passive beamforming," *IEEE Wireless Communications Letters*, vol. 9, no. 5, pp. 716–720, 2020.
- [7] A. Ranjha and G. Kaddoum, "URLLC facilitated by mobile UAV relay and RIS: A joint design of passive beamforming, blocklength, and UAV positioning," *IEEE Internet of Things Journal*, vol. 8, no. 6, pp. 4618–4627, 2020.
- [8] L. Yang, F. Meng, J. Zhang, M. O. Hasna, and M. Di Renzo, "On the performance of RIS-assisted dual-hop UAV communication systems," *IEEE Transactions on Vehicular Technology*, vol. 69, no. 9, pp. 10 385–10 390, 2020.
- [9] C. Huang, A. Zappone, G. C. Alexandropoulos, M. Debbah, and C. Yuen, "Reconfigurable intelligent surfaces for energy efficiency in wireless communication," *IEEE Transactions on Wireless Communications*, vol. 18, no. 8, pp. 4157–4170, 2019.
- [10] H. V. Abeywickrama, B. A. Jayawickrama, Y. He, and E. Dutkiewicz, "Empirical power consumption model for UAVs," in *2018 IEEE 88th Vehicular Technology Conference (VTC-Fall)*. IEEE, 2018, pp. 1–5.
- [11] E. D. Carvalho, A. Ali, A. Amiri, M. Angelichinoski, and R. W. Heath, "Non-Stationarities in Extra-Large-Scale Massive MIMO," *IEEE Wireless Communications*, vol. 27, no. 4, pp. 74–80, 2020.
- [12] Y. Zeng, J. Xu, and R. Zhang, "Energy minimization for wireless communication with rotary-wing UAV," *IEEE Transactions on Wireless Communications*, vol. 18, no. 4, pp. 2329–2345, 2019.
- [13] F. Mason, F. Chiariotti, M. Capuzzo, D. Magrin, A. Zanella, and M. Zorzi, "Combining lorawan and a new 3d motion model for remote uav tracking," in *IEEE INFOCOM 2020-IEEE Conference on Computer Communications Workshops (INFOCOM WKSHPS)*. IEEE, 2020, pp. 412–417.
- [14] E. Basar and I. Yildirim, "SimRIS channel simulator for reconfigurable intelligent surface-empowered communication systems," in *2020 IEEE Latin-American Conference on Communications (LATINCOM)*. IEEE, 2020, pp. 1–6.
- [15] Y. Zeng and R. Zhang, "Energy-efficient UAV communication with trajectory optimization," *IEEE Transactions on Wireless Communications*, vol. 16, no. 6, pp. 3747–3760, 2017.
- [16] M. Grant, S. Boyd, and Y. Ye, "CVX: Matlab software for disciplined convex programming," 2009.