

IDENTIFICATION OF CHEMOTAXIS MODELS WITH VOLUME-FILLING

HERBERT EGGER[†], JAN-FREDERIK PIETSCHMANN[†],
AND MATTHIAS SCHLOTTBOM[†]

ABSTRACT. Chemotaxis refers to the directed movement of cells in response to a chemical signal called chemoattractant. A crucial point in the mathematical modeling of chemotactic processes is the correct description of the chemotactic sensitivity and of the production rate of the chemoattractant. In this paper, we investigate the identification of these non-linear parameter functions in a chemotaxis model with volume-filling. We also discuss the numerical realization of Tikhonov regularization for the stable solution of the inverse problem. Our theoretical findings are supported by numerical tests.

1. INTRODUCTION

We consider the identification of the parameter functions $f = f(\rho)$ and $g = g(\rho)$ in the coupled non-linear parabolic-elliptic system

$$\begin{aligned} (1) \quad & \partial_t \rho = \operatorname{div}(\nabla \rho - f(\rho) \nabla c) \quad \text{in } \Omega \times (0, T), \\ (2) \quad & -\Delta c + c = g(\rho) \quad \text{in } \Omega \times (0, T), \end{aligned}$$

which is complemented by initial and boundary conditions

$$\begin{aligned} (3) \quad & \rho(0, x) = \rho_0(x) \quad \text{in } \Omega, \\ (4) \quad & \partial_n \rho - f(\rho) \partial_n c = 0 \quad \text{and} \quad \partial_n c = 0 \quad \text{on } \partial\Omega \times (0, T). \end{aligned}$$

The system (1)–(2) is a non-linear variant of the famous Patlak-Keller-Segel model of chemotaxis which describes the motion of bacteria in response to a chemical signal. In this context, $\rho(x, t)$ denotes the bacteria density, $c(x, t)$ is the concentration of the chemoattractant, $f(\rho(x, t))$ is the chemotactic sensitivity, and $g(\rho(x, t))$ is the production rate of the chemoattractant. The boundary conditions in (4) describe that there is no flux of bacteria or of the chemoattractant over the boundary $\partial\Omega$, as it is the case in a closed vessel like a petri dish; see [26] for further details.

The original model of chemotaxis introduced by Patlak [25] and by Keller and Segel [20, 21] is given by (1) and a parabolic counterpart of (2) with parameter functions $g(\rho) = \rho$ and $f(\rho) = \chi\rho$ and constant χ . For this classical model,

[†]Numerical Analysis and Scientific Computing, Department of Mathematics, TU Darmstadt, Dolivostr. 15, 64293 Darmstadt.

solutions can develop blow-up in finite time [18]. Since blow-up does not appear in biological applications, non-linear variants of the model have been introduced [3, 6, 24]. In these models, the chemotactic sensitivity $f(\rho)$ and the production rate $g(\rho)$ are described as non-linear functions of the bacteria density, in particular, f is designed to degenerate at a given maximal density which is referred to as volume-filling, [29]. Then global existence of solutions can be established [4]. We will present such a global solvability result below. For a review on models and analytical results, let us also refer to [15, 16, 17, 26].

The functions f and g required in the non-linear models of chemotaxis are typically chosen by physical reasoning. The validity of these choices can be tested by observation of the evolution of the bacteria density ρ in typical petri dish experiments. In this paper, we study from an analytical and a numerical point of view the following two important practical questions:

- (i) Is it possible to uniquely determine f from measurements of ρ ?
- (ii) Is it possible to uniquely determine g from measurements of ρ ?

We will give affirmative answers to (i) and (ii) in case the other parameter function is known. Note that f and g only depend on a single variable while measurements of ρ will typically be available in space and time. The two inverse problems (i) and (ii) are therefore highly overdetermined and one might hope to be able to identify both, f and g , at the same time. Unfortunately, we cannot give a positive answer to this question yet. For identification results for the parabolic–parabolic case, we refer to Remark 6.

To the best of our knowledge, only few results on inverse problems in chemotaxis are available to date. In [12] the case $f = f(\rho, c) = \rho \tilde{f}(c)$ is considered where the function \tilde{f} is to be identified. The special structure of the cross-diffusion term $\operatorname{div}(\rho \tilde{f}(c) \nabla c)$ is an important ingredient for the analysis in [12], and we need different techniques to prove uniqueness for the inverse problems (i) and (ii) here. After establishing the identifiability, we also discuss the possibility to reconstruct the parameters by numerical methods. Using the observation of the density ρ , we reformulate problem (i) as a linear inverse problem and we investigate Tikhonov regularization for its stable solution; the identification of g could be done in a similar manner. A related approach has been utilized for the identification of hydraulic permeability in groundwater flow in [19]. The viability of our approach will be demonstrated in numerical experiments. One could alternatively also formulate Tikhonov regularization for (i) as an optimization problem constrained by the non-linear pde system (1)–(2). Related optimal control problems for chemotaxis have been considered in [10, 11].

The outline of the manuscript is as follows: In Section 2, we introduce some basic assumptions and notations that are used throughout the text. We prove the existence and uniqueness of solutions to (1)–(4) in Section 3 and also establish

regularity and other properties of the solutions that are required for our analysis later on. Identifiability of the parameter functions f and g is proven in Section 4. The remaining two sections are concerned with the numerical reconstruction of the chemotactic sensitivity f . In Section 5, we reformulate the problem as a linear inverse problem with perturbed operator, and we discuss its ill-posedness and stable solution by Tikhonov regularization. Section 6 then presents details of our implementation and numerical tests which support our theoretical results. We conclude with a few comments on open problems, and, for convenience of the reader, we collect some auxiliary results in a short appendix.

2. PRELIMINARIES

Let $L^p(\Omega)$ denote the Lebesgue spaces of p th power integrable functions with norm $\|u\|_{L^p(\Omega)} = (\int_{\Omega} |u|^p dx)^{1/p}$ for $1 \leq p < \infty$ and $\|u\|_{L^\infty(\Omega)} = \text{ess sup}_{x \in \Omega} |u(x)|$. The symbol $W^{m,p}(\Omega)$ is used for the Sobolev space of functions in $L^p(\Omega)$ with weak derivatives up to order m in $L^p(\Omega)$. The spaces $L^2(\Omega)$ and $W^{1,2}(\Omega)$ are Hilbert spaces and the inner product of $L^2(\Omega)$ is abbreviated by

$$(u, v)_{\Omega} = \int_{\Omega} u(x)v(x) dx.$$

For a Banach space X and $1 \leq p \leq \infty$, we denote by $L^p(0, T; X)$ the Bochner space of functions $u : [0, T] \rightarrow X$ with norm

$$\|u\|_{L^p(0, T; X)}^p = \int_0^T \|u(t)\|_X^p dt < \infty.$$

For $p = \infty$ the integral is replaced by a essential supremum over $t \in (0, T)$. The space $L^2(0, T; L^2(\Omega))$ is again a Hilbert space with inner product

$$\langle u, v \rangle = \int_0^T (u(t), v(t))_{\Omega} dt.$$

The following basic assumptions on the domain, the parameters, and the initial condition will be used throughout the text for analyzing the system (1)–(4).

Assumption 1. (A1) $\Omega \subset \mathbb{R}^2$ is a bounded domain with $\partial\Omega \in C^{1,1}$.

(A2) $\rho_0 \in W^{2-2/p, p}(\Omega)$ for some fixed $2 < p < 3$, and $0 \leq \rho_0 \leq 1$ in Ω .

(A3) $f \in W^{1,\infty}(\mathbb{R})$ with $f(0) = f(1) = 0$ and $f(\rho) > 0$ for all $\rho \in (0, 1)$.

(A4) $g \in W^{1,\infty}(\mathbb{R})$ with $g'(\rho) \neq 0$ for a.e. $\rho \in (0, 1)$.

Let us shortly discuss these conditions: We think of a typical petri dish experiment, which motivates our choice of the domain in (A1). The box constraints in (A2) can always be satisfied by appropriate scaling. The smoothness of ρ_0 will be needed below to show regularity of solutions for the system (1)–(4). The bound $p > 2$ allows us to obtain continuity of ρ , and the upper bound $p < 3$ is only required to avoid compatibility conditions. The assumption (A3) ensures that the bacteria density is really sensitive to the concentration of the chemoattractant.

The volume-filling condition $f(0) = f(1) = 0$ will allow us to establish that any solution of (1) satisfies $0 \leq \rho \leq 1$ for all time. Therefore, the boundedness of f or g is in principle only required on the interval $[0, 1]$. The assumption of monotonicity of the chemotactic production rate g in (A4) ensures that the bacteria always produce (or consume) the chemoattractant. Note that the two equations (1)–(2) would decouple if $g' \equiv 0$.

3. SOLVABILITY FOR THE PARABOLIC-ELLIPTIC SYSTEM

We will now establish existence and regularity of solutions to the parabolic-elliptic system (1)–(4) under weak regularity requirements on the coefficients, and we will prove uniform a-priori bounds and further properties of the solutions. Corresponding results for smooth parameters f and g can be found, e.g., in [14].

Theorem 2 (Existence, uniqueness, regularity).

Let (A1)–(A4) hold. Then for any $T > 0$, there exists a unique solution (ρ, c) to (1)–(4) with $\rho \in L^p(0, T; W^{2,p}(\Omega)) \cap W^{1,p}(0, T; L^p(\Omega))$ and $c \in L^\infty(0, T; W^{2,p}(\Omega))$. Moreover, there holds

$$\|\rho\|_{L^p(0,T;W^{2,p}(\Omega))} + \|\partial_t \rho\|_{L^p(0,T;L^p(\Omega))} + \|c\|_{L^\infty(0,T;W^{2,p}(\Omega))} \leq C \|\rho_0\|_{W^{1,p}(\Omega)},$$

with C depending only on the domain and the bounds for the coefficients. Since $p > 2$, we also have $\rho, c \in C([0, T] \times \bar{\Omega})$ and $\nabla c \in C([0, T] \times \bar{\Omega})^2$ by embedding.

Proof. We first establish local existence of solutions via Banach's fixed point theorem. Consider the non-empty and closed set

$$\mathcal{M} = \{\rho \in L^\infty(0, T; L^2(\Omega)) : \|\rho\|_{L^\infty(0,T;L^2(\Omega))} \leq C_{\mathcal{M}}\}.$$

The constants $C_{\mathcal{M}}$ and $T > 0$ will be specified below. On \mathcal{M} we define the mapping

$$\Phi : \mathcal{M} \rightarrow L^\infty(0, T; L^2(\Omega)), \quad \tilde{\rho} \mapsto \rho,$$

where ρ is the weak solution of the linearized system

$$(5) \quad \partial_t \rho - \Delta \rho = -\operatorname{div}(f(\tilde{\rho}) \nabla c) \quad \text{in } \Omega \times (0, T),$$

$$(6) \quad -\Delta c + c = g(\tilde{\rho}) \quad \text{in } \Omega \times (0, T),$$

which is complemented by homogeneous Neumann conditions $\partial_n \rho = \partial_n c = 0$ on $\partial\Omega \times (0, T)$ and the initial condition $\rho(x, 0) = \rho_0(x)$ for $x \in \Omega$. Using assumption (A4) and Lemma A.3 with $h = g(\tilde{\rho}) \in L^\infty(0, T; L^\infty(\Omega))$ the solutions of (6) can be shown to be uniformly bounded in $L^\infty(0, T; W^{2,p}(\Omega))$ for all $T > 0$. In particular, since $p > 2$, we obtain $\|\nabla c\|_{L^\infty(0,T;L^\infty(\Omega))} \leq C_c$ for some constant C_c independent of T . By assumption (A3) we further obtain that $h = f(\tilde{\rho}) \nabla c$ is uniformly bounded in $L^\infty(0, T; L^2(\Omega))$, and an application of Lemma A.1 yields

that the solution of (5) is bounded by

$$\begin{aligned} \|\rho\|_{L^\infty(0,T;L^2(\Omega))} &\leq \|f(\tilde{\rho})\nabla c\|_{L^2(0,T;L^2(\Omega))} + \|\rho_0\|_{L^2(\Omega)} \\ &\leq \sqrt{T|\Omega|}\|f\|_{L^\infty(\mathbb{R})}\|g\|_{L^\infty(\mathbb{R})} + \|\rho_0\|_{L^2(\Omega)} =: C_{\mathcal{M}}. \end{aligned}$$

This shows that Φ is a self-mapping on \mathcal{M} if $C_{\mathcal{M}}$ is chosen appropriately.

Now let $\rho_1 = \Phi(\tilde{\rho}_1)$ and $\rho_2 = \Phi(\tilde{\rho}_2)$ with $\tilde{\rho}_1, \tilde{\rho}_2 \in \mathcal{M}$. Then $\rho_1 - \rho_2$ satisfies the coupled linear parabolic-elliptic system

$$\begin{aligned} \partial_t(\rho_1 - \rho_2) - \Delta(\rho_1 - \rho_2) &= -\operatorname{div}(f(\tilde{\rho}_1)\nabla c_1 - f(\tilde{\rho}_2)\nabla c_2) \\ -\Delta(c_1 - c_2) + (c_1 - c_2) &= g(\tilde{\rho}_1) - g(\tilde{\rho}_2) \end{aligned}$$

with homogeneous initial and boundary conditions. From the second equation and Lemma A.3 with $h = g(\tilde{\rho}_1) - g(\tilde{\rho}_2) = g'(\tilde{\rho})(\tilde{\rho}_1 - \tilde{\rho}_2)$, we deduce

$$\|c_1 - c_2\|_{L^\infty(0,T;W^{1,2}(\Omega))} \leq \|g'\|_{L^\infty(\mathbb{R})}\|\tilde{\rho}_1 - \tilde{\rho}_2\|_{L^\infty(0,T;L^2(\Omega))}.$$

Applying Lemma A.1 with $h = f(\tilde{\rho}_1)\nabla c_1 - f(\tilde{\rho}_2)\nabla c_2$, we obtain the following estimate for the solution of the first equation

$$\begin{aligned} \|\rho_1 - \rho_2\|_{L^\infty(0,T;L^2(\Omega))} &\leq \|f(\tilde{\rho}_1)\nabla c_1 - f(\tilde{\rho}_2)\nabla c_2\|_{L^2(0,T;L^2(\Omega))} \\ &\leq \|(f(\tilde{\rho}_1) - f(\tilde{\rho}_2))\nabla c_1\|_{L^2(0,T;L^2(\Omega))} + \|f(\tilde{\rho}_2)(\nabla c_1 - \nabla c_2)\|_{L^2(0,T;L^2(\Omega))}. \end{aligned}$$

Due to the uniform a-priori bound for c_1 , the first term can be estimated by

$$\|(f(\tilde{\rho}_1) - f(\tilde{\rho}_2))\nabla c_1\|_{L^2(0,T;L^2(\Omega))} \leq \sqrt{T}C_c\|f'\|_{L^\infty(\mathbb{R})}\|\tilde{\rho}_1 - \tilde{\rho}_2\|_{L^\infty(0,T;L^2(\Omega))},$$

and using the previous estimate for $c_1 - c_2$, we obtain the bound

$$\|f(\tilde{\rho}_2)(\nabla c_1 - \nabla c_2)\|_{L^2(0,T;L^2(\Omega))} \leq \sqrt{T}\|f\|_{L^\infty(\mathbb{R})}\|g'\|_{L^\infty(\mathbb{R})}\|\tilde{\rho}_1 - \tilde{\rho}_2\|_{L^\infty(0,T;L^2(\Omega))}$$

for the second term. Combining these estimates with the one for $\rho_1 - \rho_2$, we get

$$\|\rho_1 - \rho_2\|_{L^\infty(0,T;L^2(\Omega))} \leq C'\sqrt{T}\|\tilde{\rho}_1 - \tilde{\rho}_2\|_{L^\infty(0,T;L^2(\Omega))},$$

where C' only depends on Ω and the bounds for the coefficients. Choosing T small enough, we conclude that Φ is a contraction on \mathcal{M} .

Hence by Banach's fixed point theorem, there exists a unique $\rho \in \mathcal{M}$ such that $\rho = \Phi(\rho)$. Applying Lemma A.3 with $h = g(\rho)$ and Lemma A.1 with $h = \operatorname{div}(f(\rho)\nabla c)$, we see that $\rho \in L^2(0,T;W^{1,2}(\Omega))$. We can now differentiate the right hand side of (5) and rearrange terms to realize that ρ also satisfies

$$\partial_t \rho - \Delta \rho + f'(\rho)\nabla c \cdot \nabla \rho = -f(\rho)\Delta c.$$

This amounts to problem (A.5)–(A.6) with $b = f'(\rho)\nabla c \in L^\infty(0,T;L^\infty(\Omega))$ and $h = -f(\rho)\Delta c \in L^\infty(0,T;L^p(\Omega))$. By Lemma A.2, we can thus conclude that $\rho \in L^p(0,T;W^{2,p}(\Omega)) \cap W^{1,p}(0,T;L^p(\Omega))$. Due to the uniform boundedness of g and thus of c , the existence and regularity result can be made global in time by a standard continuation argument. \square

In addition to the a-priori estimates of the previous theorem, we will also require pointwise bounds on the solution ρ for our analysis of the inverse problems. The following result strongly relies on the volume-filling property of our model, i.e. the condition $f(0) = f(1) = 0$ in assumption (A3). For smooth functions f , a similar statement, but with a different proof, can be found in [14].

Lemma 3 (Invariant Regions).

Let (A1)–(A4) hold and let (ρ, c) be a regular solution of the system (1)–(4) with $\rho \in L^p(0, T; W^{2,p}(\Omega)) \cap W^{1,p}(0, T; L^p(\Omega))$ and $c \in L^\infty(0, T; W^{2,p}(\Omega))$. Then

$$0 \leq \rho(x, t) \leq 1 \quad \text{for all } (x, t) \in \Omega \times (0, T).$$

Proof. For $\gamma > 0$ let us define $\eta_\gamma \in W^{2,\infty}(\mathbb{R})$ by

$$\eta_\gamma(\rho) = \begin{cases} 0, & \rho \leq 0, \\ \frac{\rho^2}{4\gamma}, & 0 < \rho \leq 2\gamma, \\ \rho - \gamma, & \rho > 2\gamma, \end{cases} \quad \text{with} \quad \eta_\gamma''(\rho) = \begin{cases} 0, & \rho \leq 0, \\ \frac{1}{2\gamma}, & 0 < \rho \leq 2\gamma, \\ 0, & \rho > 2\gamma. \end{cases}$$

Note that $\eta_\gamma(\rho)$ is a regularization of the function $\rho_+ = \max(\rho, 0)$. Using equations (1) and (4), integration-by-parts, and Young's inequality, we obtain

$$\begin{aligned} \frac{d}{dt} \int_{\Omega} \eta_\gamma(\rho - 1) dx &= \int_{\Omega} \eta_\gamma'(\rho - 1) \partial_t \rho dx = \int_{\Omega} \eta_\gamma'(\rho - 1) \operatorname{div}(\nabla \rho - f(\rho) \nabla c) dx \\ &= - \int_{\Omega} \eta_\gamma''(\rho - 1) (|\nabla \rho|^2 - f(\rho) \nabla c \cdot \nabla \rho) dx \\ (7) \quad &\leq -\frac{1}{2} \int_{\Omega} \eta_\gamma''(\rho - 1) |\nabla \rho|^2 dx + \frac{1}{2} \int_{\Omega} \eta_\gamma''(\rho - 1) f(\rho)^2 |\nabla c|^2 dx. \end{aligned}$$

We claim now that the last integral vanishes when we let $\gamma \rightarrow 0$. To see this, we define $\Omega_\gamma = \{x \in \Omega : 1 \leq \rho(x, t) \leq 1 + 2\gamma\}$ and use $f(1) = 0$, to get

$$\begin{aligned} &\int_{\Omega_\gamma} \eta_\gamma''(\rho - 1) (f(\rho) - f(1))^2 |\nabla c|^2 dx \\ &\leq \|f'\|_{L^\infty(\mathbb{R})}^2 \int_{\Omega_\gamma} \frac{(\rho - 1)^2}{2\gamma} |\nabla c|^2 dx \leq 2\gamma \|f'\|_{L^\infty(\mathbb{R})}^2 \|\nabla c\|_{L^\infty(0, T; L^2(\Omega))}^2. \end{aligned}$$

Together with the non-positivity of the first term in (7), we conclude that

$$\frac{d}{dt} \int_{\Omega} (\rho - 1)_+ dx = \lim_{\gamma \rightarrow 0^+} \frac{d}{dt} \int_{\Omega} \eta_\gamma(\rho - 1) dx \leq 0.$$

Using the box constraints in (A2) for the initial density, we thus obtain that

$$0 \leq \int_{\Omega} (\rho - 1)_+ dx \leq \int_{\Omega} (\rho_0 - 1)_+ dx \leq 0,$$

for every $t \geq 0$. This implies that $(\rho - 1)_+ = 0$, i.e. $\rho \leq 1$ on $\Omega \times (0, T)$. The other direction $0 \leq \rho$ follows with the same arguments, by considering $(\rho)_- = (-\rho)_+$ instead of $(\rho - 1)_+$ and using $f(0) = 0$ instead of $f(1) = 0$. \square

4. UNIQUENESS FOR THE INVERSE PROBLEMS

We are now in a position to address the two identification problems outlined in the introduction: Can the observation of the bacteria density ρ on $\Omega \times (0, T)$ be used to uniquely determine either

- (i) the chemotactic sensitivity f , or
- (ii) the production rate g of the chemoattractant,

if the other of the two parameter functions is known? Note that identification is of course only possible on the interval $(\rho_{\min}, \rho_{\max})$ of densities that are attained; here $\rho_{\min} = \min_{(x,t) \in \bar{\Omega} \times [0,T]} \rho(x, t)$ and $\rho_{\max} = \max_{(x,t) \in \bar{\Omega} \times [0,T]} \rho(x, t)$.

4.1. Identification of f . Denote by (ρ_1, c_1) and (ρ_2, c_2) the solutions of (1)–(4) with f replaced by f_1 and f_2 , respectively. We then have

Theorem 4. *Let (A1), (A2), (A4) hold, and let f_1, f_2 satisfy (A3). Then*

$$\rho_1 = \rho_2 \text{ on } \Omega \times (0, T) \quad \text{implies} \quad f_1 = f_2 \text{ on } (\rho_{\min}, \rho_{\max}).$$

Proof. If ρ_0 is constant, then ρ and c are constant for all time and $(\rho_{\min}, \rho_{\max})$ is empty, so nothing has to be shown. We therefore assume from now on that ρ_0 is not constant and we rewrite equation (1) as

$$(8) \quad -\operatorname{div}(f_i(\rho_i) \nabla c_i) = \partial_t \rho_i - \Delta \rho_i, \quad i = 1, 2.$$

Since $\rho_1 = \rho_2 =: \rho$, equation (2) implies that $c_1 = c_2 =: c$. We then subtract the two equations (8) for $i = 1, 2$, to obtain that

$$(9) \quad -\operatorname{div}((f_1(\rho) - f_2(\rho)) \nabla c) = 0 \quad \text{on } \Omega \times (0, T).$$

This is a linear equation in $F = f_1 - f_2$ and it remains to show that (9) implies $F(\rho) = 0$ for all $\rho \in (\rho_{\min}, \rho_{\max})$. We argue by contradiction:

Assume that there exists $\bar{\rho} \in (\rho_{\min}, \rho_{\max})$ with $F(\bar{\rho}) > 0$ and $\bar{\rho} = \rho(\bar{x}, \bar{t})$ for some $(\bar{x}, \bar{t}) \in \Omega \times (0, T)$. Since $F(\rho)_+ = \max\{F(\rho), 0\} = F(\rho)$ on the open and nonempty set $U = \{(x, t) \in \Omega \times (0, T) : F(\rho(x, t)) > 0\}$, we infer from (9) that

$$-\operatorname{div}(F(\rho)_+ \nabla c) = 0 \quad \text{in } U.$$

Without loss of generality, we may assume that $\bar{U} \cap (\Omega \times \{0\})$ is not empty; otherwise we can exchange the role of f_1 and f_2 . Multiplying this equation by the concentration c and integrating over U yields

$$\begin{aligned} 0 &= - \iint_U \operatorname{div}(F(\rho)_+ \nabla c) c(x, t) = - \int_0^T \int_{\Omega} \operatorname{div}(F(\rho)_+ \nabla c) c \, dx \, dt \\ &= \iint_U F(\rho)_+ |\nabla c|^2 \, d(x, t). \end{aligned}$$

In the last step we used integration-by-parts and, respectively, the boundary condition $\partial_n c = 0$ on $\partial\Omega \times (0, T)$ to eliminate the boundary term. Since $F(\rho)_+ =$

$F(\rho) > 0$ on U , we infer that

$$(10) \quad \nabla c = 0 \quad \text{on } U,$$

from which we also conclude that $\Delta c = 0$ on U . Using this in equation (2) we obtain by differentiation

$$0 = \nabla c = g'(\rho) \nabla \rho \quad \text{on } U,$$

and from assumption (A4) we deduce that $\nabla \rho = 0$ on U . Inserting this in equation (1), we also obtain that $\partial_t \rho = 0$ on U . Thus, ρ is constant on every connected component of U , and by continuity also on \bar{U} , which is a contradiction to $\rho_0 \neq \text{const}$. Therefore, $F(\rho) = f_1(\rho) - f_2(\rho) = 0$ on $\Omega \times (0, T)$. \square

4.2. Identification of g . Let us now turn to the problem of identifying the chemotactic production rate g when the chemotactic sensitivity f is known. Here we denote by (ρ_1, c_1) and (ρ_2, c_2) the solutions of the system (1)–(4) with g replaced by g_1 and g_2 , respectively. For this case, we have

Theorem 5. *Let (A1)–(A3) hold, and assume that g_1, g_2 satisfy (A4). Then*

$$\rho_1 = \rho_2 \text{ in } \Omega \times (0, T) \quad \text{implies} \quad g_1 = g_2 + C \text{ on } (\rho_{\min}, \rho_{\max})$$

for some constant $C \in \mathbb{R}$ that cannot be identified.

Proof. We set $\rho := \rho_1 = \rho_2$ and subtract equation (1) for c_1 and c_2 to obtain

$$-\operatorname{div}(f(\rho) \nabla (c_1 - c_2)) = 0 \quad \text{on } \Omega \times (0, T).$$

Multiplying this equation by $c_1 - c_2$, integrating over the domain Ω , integrating by parts, and using the boundary conditions (4) yields

$$\int_{\Omega} f(\rho) |\nabla (c_1 - c_2)|^2 dx = 0 \quad \text{for all } t \in (0, T).$$

This further implies that

$$(11) \quad \nabla (c_1 - c_2) = 0 \quad \text{on } U = \{(x, t) \in \Omega \times (0, T) : f(\rho(x, t)) > 0\}.$$

By continuity of ρ and by $f(\tilde{\rho}) > 0$ for all $0 < \tilde{\rho} < 1$ due to (A3), there exists an open connected component V of U with $(\rho_{\min}, \rho_{\max}) = \{\rho(x, t) : (x, t) \in V\}$. Because of (2) and (11) we get

$$(12) \quad g_1(\rho(x, t)) - g_2(\rho(x, t)) = c_1(x, t) - c_2(x, t) = d(t) \quad \text{for all } (x, t) \in V$$

with some continuous function d depending only on t . We will show below, that d is in fact constant on V , which by (12) and the fact that ρ attains all possible values on V yields the assertion of the theorem.

Let us now show that d is constant on V : We denote by $[t_0, t_1]$ the smallest interval such that $V \subset \Omega \times (t_0, t_1)$ and set $V_t = \{x \in \Omega : (x, t) \in V\}$. First assume that $\rho(\cdot, \bar{t}) \equiv \text{const}$ for some $\bar{t} \in (t_0, t_1)$: Then $V_{\bar{t}} = \Omega$ and $\rho(\cdot, t) = \rho(\cdot, \bar{t}) \equiv \text{const}$ for all $t \geq \bar{t}$, and also $d(t) = d(\bar{t})$ for all $t \geq \bar{t}$. Now assume that $\rho(\cdot, \bar{t}) \not\equiv \text{const}$ on $V_{\bar{t}}$. Then there exists $\bar{x} \in V_{\bar{t}}$ and $\varepsilon > 0$ such that $\bar{\rho} = \rho(\bar{x}, \bar{t})$ and $(\bar{\rho} - \varepsilon, \bar{\rho} + \varepsilon) \subset$

$\{\rho(x, \bar{t}) : x \in V_{\bar{t}}\}$. Since V is open and ρ is continuous, there exists $\delta > 0$ such that the ball $B_\delta(\bar{x}, \bar{t}) \subset V$ and $\rho(x, t) \in (\bar{\rho} - \varepsilon, \bar{\rho} + \varepsilon)$ for all $(x, t) \in B_\delta(\bar{x}, \bar{t})$. From this and (12) we conclude that $d(t) = d(\bar{t})$ for all $|t - \bar{t}| < \delta$. Using a continuation argument, we obtain that $d(t) = d(\bar{t})$ for all $t \in (t_0, t_1)$, which was to be shown.

It can easily be seen, that a shift of $g(\rho)$ by a constant value just shifts c by a constant value and therefore does not change the density ρ . Therefore, g can at most be identified up to constants. \square

Remark 6 (parabolic–parabolic case). *Let us also briefly comment of identifiability for the parabolic–parabolic system given by (1) and*

$$\partial_t c - \Delta c + c = g(\rho),$$

instead of (2). We expect that the proofs for both the unique identifiability of f and g can be adapted to this case. In fact, for Theorem 4 the only modification is to notice that $\nabla c = 0$ also implies $\partial_t \nabla c = 0$. For Theorem 5, the proof will remain unchanged until the definition of $d(t)$ which will contain an additional additive term stemming from the time derivatives. To give precise statements together with an adapted existence theory and the numerical treatment of the reconstruction of g is work in progress.

5. FORWARD OPERATOR – ILL-POSEDNESS – REGULARIZATION

In this section we study in more detail the inverse problem of determining the unknown chemotactic sensitivity f from observation of the bacteria density $\rho(x, t)$ for all $(x, t) \in \Omega \times (0, T)$. Let us denote by f^0 the true chemotactic sensitivity and by ρ^0, c^0 the corresponding solution of the system (1)–(4). In view of the results of Section 4.1 the data ρ^0 contain enough information to identify f^0 uniquely on the interval $[\rho_{\min}, \rho_{\max}]$ of values of the density that is attained in the experiment. In practice we have to deal with noisy data ρ^δ , for which we assume that

$$(13) \quad \|\rho^0 - \rho^\delta\|_{L^2(0, T; L^2(\Omega))} \leq \delta.$$

As usual, the noise level δ is assumed to be known. Using the observation ρ^δ , we can define a perturbed forward operator

$$T^\delta : H^1(0, 1) \rightarrow L^2(0, T; L^2(\Omega)), \quad f \mapsto r^\delta$$

where $r^\delta \in L^2(0, T; W^{1,2}(\Omega)) \cap W^{1,2}(0, T; W^{1,2}(\Omega)')$ is a solution to the system

$$(14) \quad \partial_t r^\delta - \Delta r^\delta = -\operatorname{div}(f(\rho^\delta) \nabla c^\delta) \quad \text{in } \Omega \times (0, T),$$

$$(15) \quad -\Delta c^\delta + c^\delta = g(\rho^\delta) \quad \text{in } \Omega \times (0, T),$$

complemented by homogeneous Neumann conditions on $\partial\Omega \times (0, T)$ and the initial condition $r^\delta(0) = \rho_0$ in Ω . In view of Lemmas A.1 and A.3, the mapping T^δ is well-defined. The inverse problem of identifying f can then be formulated as

$$(16) \quad T^\delta f = \rho^\delta.$$

We denote by T the operator with ρ^0 used instead of ρ^δ in the right hand side of equations (14) and (15). Then $Tf^0 = \rho^0$, so a solution for unperturbed data and operator exists. Next, let us summarize some basic properties of the forward operator.

Lemma 7. *For any $\delta \geq 0$, the operator $T^\delta : H^1(0, 1) \rightarrow L^2(0, T; L^2(\Omega))$ is affine linear, bounded, and compact.*

Proof. Affine linearity is clear, and compactness of T^δ , and hence boundedness, is a direct consequence of the Aubin-Lions lemma [1]. \square

As a direct consequence of the compactness of T and T^δ , the inverse problem is ill-posed, and some sort of regularization is required.

5.1. Regularization. In the following, we consider Tikhonov regularization for a stable solution of the perturbed inverse problem (16). For $\alpha > 0$, we define regularized approximations via the minimization problem

$$(17) \quad J_\alpha^\delta(f) = \frac{1}{2} \|T^\delta f - \rho^\delta\|_{L^2(0, T; L^2(\Omega))}^2 + \frac{\alpha}{2} \|f\|_{H^1(0, 1)}^2 \rightarrow \min_{f \in H^1(0, 1)} !$$

From standard regularization theory [8, Chapter 5], we know that (17) has a unique minimizer f_α^δ for any $\alpha > 0$. To show convergence of f_α^δ towards the solution, we also need an estimate for the perturbation in the operator. With the same arguments as in the proof of Theorem 2 one can see that

$$(18) \quad \|T^\delta f - Tf\|_{L^2(0, T; L^2(\Omega))} \leq C\delta \|f\|_{W^{1, \infty}(0, 1)} \quad \text{for any } f \in W^{1, \infty}(0, 1).$$

It is also possible to bound the perturbation error by $C\delta^{1/2} \|f\|_{H^1(0, 1)}$ for all functions $f \in H^1(0, 1)$. Using the results of [8, Chapter 5], one can show that f_α^δ converges to the minimum-norm solution f^\dagger of the unperturbed problem $Tf^0 = \rho^0$, i.e., to the solution of minimal H^1 -norm. Note that for the unperturbed problem such a solution always exists. For convenience of the reader, let us state the basic convergence result explicitly.

Lemma 8. *Let $T : X \rightarrow Y$ be a bounded linear operator between Hilbert spaces X and Y , and $\rho \in R(T)$. For $\delta > 0$ let $\|\rho - \rho^\delta\| \leq \delta$ and let $T^\delta : X \rightarrow Y$ be bounded linear operators with $\|Tf^\dagger - T^\delta f^\dagger\|_Y \leq C(f^\dagger)\delta$. Then the regularized solutions f_α^δ defined by (17) converge to the minimum-norm solution f^\dagger of $Tf = \rho$ with $\delta \rightarrow 0$, provided that $\alpha \rightarrow 0$ and $\delta^2/\alpha \rightarrow 0$.*

Proof. To avoid double superscripts, let us write \tilde{T} for T^δ . Using $Tf^\dagger = \rho$ one easily obtains

$$(\tilde{T}^* \tilde{T} + \alpha I)(f_\alpha^\delta - f^\dagger) = \tilde{T}^*(\rho^\delta - \rho) + \tilde{T}^*(\tilde{T}f^\dagger - Tf^\dagger) - \alpha f^\dagger.$$

Applying the inverse of $\tilde{T}^* \tilde{T} + \alpha I$ and the triangle inequality yields

$$\|f_\alpha^\delta - f^\dagger\| \leq \|(\tilde{T}^* \tilde{T} + \alpha I)^{-1} \tilde{T}^*\|(\|\rho^\delta - \rho\| + \|\tilde{T}f^\dagger - Tf^\dagger\|) + \|\alpha(\tilde{T}^* \tilde{T} + \alpha I)^{-1} f^\dagger\|.$$

By the usual spectral estimates, we get $\|(\tilde{T}^*\tilde{T} + \alpha I)^{-1}\tilde{T}^*\| \leq \alpha^{-1/2}$ and $\|\alpha(\tilde{T}^*\tilde{T} + \alpha I)^{-1}f^\dagger\| \rightarrow 0$ with $\alpha \rightarrow 0$. The assertion then directly follows from the assumptions and the conditions on α and δ . \square

From our uniqueness results we can deduce that $f^\dagger = f^0$ on $[\rho_{min}, \rho_{max}]$, where f^0 is the true solution. On the remaining part of the interval $[0, 1]$, the minimum norm solution solves $-\Delta f^\dagger + f^\dagger = 0$. Hence, f^\dagger is in $W^{1,\infty}$ globally. In view of (18) Lemma 8 thus applies almost verbatim to our problem. As can be seen from the proof, one can also obtain quantitative estimates in the usual manner. In our numerical examples, we utilize the discrepancy principle as a parameter choice rule, i.e. we choose the maximal $\alpha > 0$ such that

$$(19) \quad \|T^\delta f_\alpha^\delta - \rho^\delta\|_{L^2(0,T;L^2(\Omega))} \leq \tau\delta$$

for some appropriate $\tau > 1$. Assuming that the minimum-norm solution satisfies an appropriate source condition, we can expect that $\|f_\alpha^\delta - f^\dagger\|_{H^1(0,1)} = \mathcal{O}(\sqrt{\delta})$, which is what we observe in our numerical tests.

6. NUMERICAL EXAMPLES

Setup. To mimic a typical experiment in a petri dish, we choose $\Omega = B_1(0) \subset \mathbb{R}^2$. For our numerical test, we set

$$f^0(\rho) = \rho(1 - \rho) \text{ and } g(\rho) = \rho,$$

which is a typical form of the parameters that can be found in the literature. Furthermore, we define the initial datum by

$$(20) \quad \rho_0(x) = 0.45 \exp\left(-\frac{(10x_1 - 3)^2 + 225x_2^2}{20}\right);$$

see Figure 1 for an image. The true data ρ^0 are then computed by a standard numerical method as outlined below. To obtain, a physically reasonable evolution, we consider instead of (1)–(2) the system

$$\begin{aligned} \partial_t \rho - D_\rho \Delta \rho &= -\operatorname{div}(f(\rho) \nabla c) & \text{in } \Omega \times (0, T), \\ -D_c \Delta c + A_c c &= g(\rho) & \text{in } \Omega \times (0, T), \end{aligned}$$

with constant diffusion and absorption parameters $D_\rho = 0.05$, $D_c = 0.1$, and $A_c = 0.01$. Our analytical results are valid also for this system and, with a slight abuse of notation, we will just refer to (1)–(2) and (14)–(15) below.

Finite Element Discretization. In order to compute approximate solutions for (1)–(4), we use a Galerkin framework. For the discretization of f we take one-dimensional continuous piecewise linear finite elements with 1000 degrees of freedom. For the spatial discretization of ρ and c , we employ two-dimensional continuous piecewise linear finite elements on a triangulation of Ω with 4225 vertices, and we use a linear implicit Euler scheme with step size $\Delta t = 0.025$

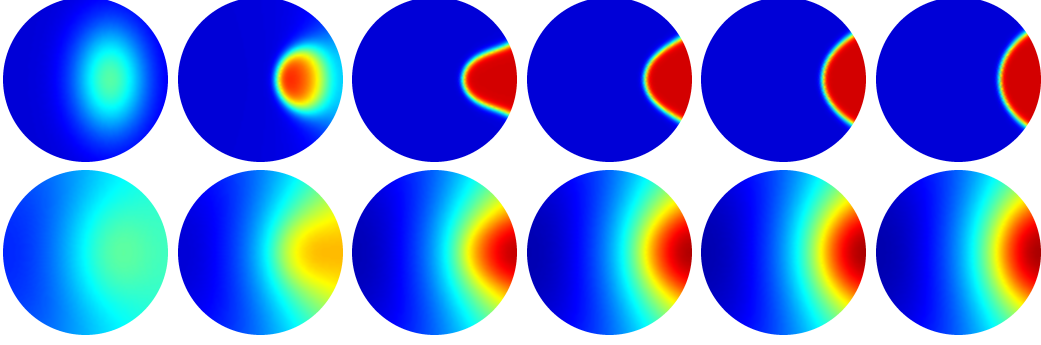


FIGURE 1. Simulated data $\rho_h^0(t)$ (top) and corresponding concentrations $c_h^0(t)$ (bottom) for $t = 0, 1, \dots, 5$ from left to right.

and $T_{end} = 5$ for the time integration. Let us refer to [2, 28] for details on finite element discretizations for elliptic and parabolic problems.

Simulation of the data. Some snapshots $\rho_h^0(t)$ and $c_h^0(t)$ of the bacteria density and the concentration of the chemoattractant obtained with our simulation are depicted in Figure 1. During the whole evolution, the range of the bacteria density ρ_h^0 is bounded by $\rho_{\min}^0 = 7.3 \times 10^{-6} \approx 0$ and $\rho_{\max}^0 = 1 - 1.7 \times 10^{-6} \approx 1$; thus we expect that $f(\rho)$ can be identified on the whole interval $\rho \in (0, 1)$, and $f^0 = f^\dagger$.

Setup of the inverse problem. The computed data ρ_h^0 are perturbed by random noise such that

$$\|\rho_h^0 - \rho_h^\delta\|_{L^2(0,T;L^2(\Omega))} = \delta.$$

To obtain a discretization of the perturbed forward operator T^δ , we proceed as follows: In each time step we compute $c_h(t^{n+1})$ by solving numerically the elliptic equation (15) with right-hand side $g(\rho_h^\delta(t^n))$. We then compute $r_h^\delta(t^{n+1})$ by solving the parabolic equation (14) with right-hand side $-\nabla \cdot (f(\rho_h^\delta(t^n))\nabla c_h(t^{n+1}))$. The discretization of the operator T^δ is then defined by the mapping $f_h \mapsto r_h^\delta$. The regularized approximation $f_{h,\alpha}^\delta$ is finally computed by minimizing the discrete counterpart of the Tikhonov functional J_α^δ using the discrepancy principle with $\tau = 1.03$ as a stopping rule.

Reconstructions. In Figure 2, we depict the reconstructions $f_{h,\alpha}^\delta$ that were obtained for $\delta \in \{0.05, 0.5\}$. Note that we obtain rather good reconstructions already for very large noise levels, which can be explained by the fact that the inverse problem is highly overdetermined. The good quality of the reconstructions indicates that the proposed method could actually be useful in practice.

In Figure 3, we display the regularization parameters α chosen by the discrepancy principle, and the reconstruction errors $\|f^0 - f_{h,\alpha}^\delta\|_{H^1(0,1)}$ obtained in our tests. As predicted by theory, when assuming that a source condition is valid, we

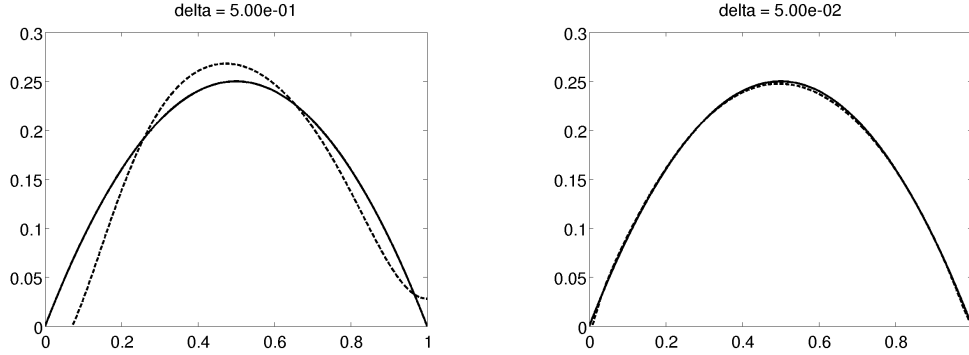


FIGURE 2. Sensitivity $f^0(\rho) = \rho(1 - \rho)$ (solid) and reconstruction $f_{h,\alpha}^\delta$ (dotted) for noise levels $\delta = 0.5$ (left) and $\delta = 0.05$ (right).

observe $\alpha \approx \delta$ and $\|f^0 - f_{h,\alpha}^\delta\|_{H^1(0,1)} \approx \sqrt{\delta}$ which is the best one can expect for Tikhonov regularization stopped by the discrepancy principle [8, Chapter 5].

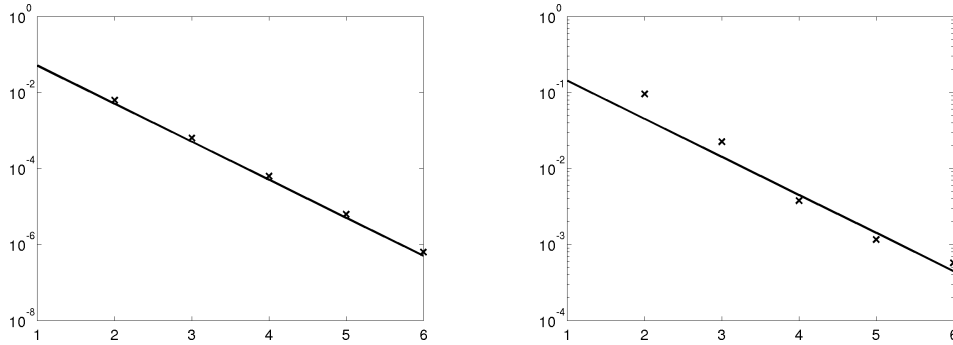


FIGURE 3. Regularization parameters α picked by the discrepancy principle for $\delta = 5 \times 10^{-i}$, $i = 1, \dots, 6$ (left) and reconstruction errors $\|f^0 - f_{h,\alpha}^\delta\|_{H^1(0,1)}$ (right). The numerical results (dotted) are compared with the theoretical rates δ and $\sqrt{\delta}$, respectively.

7. CONCLUSION & OPEN PROBLEMS

In this work, we investigated the identification of the parameter functions $f(\rho)$ and $g(\rho)$ in a non-linear chemotaxis model with volume-filling. We presented uniqueness results for the identification of either parameter when the other is known from distributed measurements of the bacteria density alone. We also proposed a numerical method for actually computing the unknown functions, and illustrated its performance by numerical tests.

Let us mention some further topics of possible research concerning inverse problems in chemotaxis that could not be addressed here: From the theoretical point of view, the simultaneous identification of both functions $f(\rho)$ and $g(\rho)$

remains an open problem. A related question is, how much data is really needed to identify $f(\rho)$ and $g(\rho)$. It seems natural to conjecture that it is possible to reconstruct both functions on the range of values attained in the data, no matter how much data is available. Besides uniqueness, also the questions of stability of the reconstruction should be addressed. Our numerical results suggest that it might be possible to obtain convergence rates. It remains to verify that the chemotactic sensitivity f in fact satisfies the required source condition and to interpret this condition. Apart from the volume-filling model considered in this work, other chemotaxis models have been proposed, which also have a non-linear diffusion term, e.g. of porous medium type; see [5, 7, 23]. Starting from the existence theory, which is different from what we presented here, it would be interesting to see which of our results of Section 4 can be lifted to this case. Finally, it would be interesting to see how far our results can be used to learn about real biological systems like *E. coli* bacteria [27].

8. ACKNOWLEDGEMENTS

HE acknowledges support by DFG via Grant IRTG 1529 and GSC 233. The work of JFP was supported by DFG via Grant 1073/1-1, by the Daimler and Benz Stiftung via Post-Doc Stipend 32-09/12 and by the German Academic Exchange Service via PPP grant no. 56052884.

APPENDIX

This section summarizes some results from the linear theory of parabolic and elliptic boundary value problems that are needed in the fixed-point argument of Theorem 2 and elsewhere in the manuscript.

Lemma A.1. *For $h \in L^2(0, T; L^2(\Omega))^2$ and $u_0 \in L^2(\Omega)$ the Neumann problem*

$$(A.1) \quad \partial_t u - \Delta u = -\operatorname{div}(h) \quad \text{in } \Omega \times (0, T),$$

$$(A.2) \quad \partial_n u = 0 \quad \text{in } \partial\Omega \times (0, T),$$

$$(A.3) \quad u(0) = u_0 \quad \text{in } \Omega,$$

has a unique weak solution $u \in L^2(0, T; W^{1,2}(\Omega)) \cap W^{1,2}(0, T; W^{1,2}(\Omega)')$, which satisfies

$$(A.4) \quad \|u\|_{L^\infty(0, T; L^2(\Omega))} \leq \|h\|_{L^2(0, T; L^2(\Omega))} + \|u_0\|_{L^2(\Omega)}.$$

Here, the divergence has to be understood in a distributional sense, i.e.

$$\langle -\operatorname{div}(h), \phi \rangle := \int_0^T \int_\Omega h(x, t) \cdot \nabla \phi(x, t) \, dx \, dt \quad \text{for } \phi \in L^2(0, T; W^{1,2}(\Omega)).$$

Proof. The existence and uniqueness follows with standard arguments; see e.g. [9]. Multiplying (A.1) with the solution u and integrating over $\Omega \times (0, t)$ gives

$$\frac{1}{2}\|u(t)\|_{L^2(\Omega)}^2 + \int_0^t \|\nabla u(s)\|_{L^2(\Omega)}^2 ds = \frac{1}{2}\|u_0\|_{L^2(\Omega)}^2 + \int_0^t (h, \nabla u(s))_\Omega ds.$$

The assertion then follows by an application of Young's inequality. \square

Lemma A.2. *For $h \in L^q(0, T; L^q(\Omega))$, $b \in L^\infty(0, T; L^\infty(\Omega))^2$ and $u_0 \in W^{2-2/q, q}(\Omega)$ with $2 < q < 3$, the Neumann problem*

$$(A.5) \quad \partial_t u - \Delta u + b \cdot \nabla \rho = h \quad \text{in } \Omega \times (0, T),$$

$$(A.6) \quad \partial_n u = 0 \quad \text{in } \partial\Omega \times (0, T),$$

$$(A.7) \quad u(0) = u_0 \quad \text{in } \Omega,$$

has a unique solution $u \in L^q(0, T; W^{2, q}(\Omega)) \cap W^{1, q}(0, T; L^q(\Omega))$ which satisfies

$$\|u\|_{L^q(0, T; W^{2, q}(\Omega))} + \|\partial_t u\|_{L^q(0, T; L^q(\Omega))} \leq C(\|h\|_{L^q(0, T; L^q(\Omega))} + \|u_0\|_{W^{2-2/q, q}(\Omega)}).$$

In particular, we deduce from Sobolev embeddings that $u \in C^0(\overline{\Omega} \times [0, T])$.

For the proof, let us refer to [22].

Lemma A.3. *Let $h \in L^\infty(0, T; L^q(\Omega))$ for some $2 \leq q < \infty$. Then there exists a unique $u \in L^\infty(0, T; W^{2, q}(\Omega))$ satisfying the Neumann problem*

$$(A.8) \quad -\Delta u + u = h \quad \text{in } \Omega, \quad \text{for a.e. } t \in [0, T]$$

$$(A.9) \quad \partial_n u = 0 \quad \text{on } \partial\Omega, \quad \text{for a.e. } t \in [0, T].$$

Moreover, the following a-priori estimates hold

$$(A.10) \quad \|u\|_{L^\infty(0, T; W^{2, q}(\Omega))} \leq C\|h\|_{L^\infty(0, T; L^q(\Omega))},$$

$$(A.11) \quad \|u\|_{L^r(0, T; W^{1, 2}(\Omega))} \leq \|h\|_{L^r(0, T; L^2(\Omega))},$$

where C only depends on Ω and q , and $1 \leq r \leq \infty$ is arbitrary.

Proof. Existence of a unique solution in $W^{2, q}(\Omega)$ for a.e. $t \in [0, T]$ follows from standard arguments in the theory of linear elliptic equations, see e.g. [13, Thm. 2.4.2.7]. The a-priori estimate (A.10) follows by the bounded inverse theorem and by taking the supremum over t . Estimate (A.11) follows in a similar fashion as the a-priori estimate in Lemma A.1. \square

REFERENCES

- [1] J.-P. Aubin. Un théorème de compacité. *C. R. Acad. Sci. Paris*, 256:5042–5044, 1963.
- [2] D. Braess. *Finite Elements*. Cambridge University Press, New York, 3rd edition, 2007.
- [3] M. Burger, M. Di Francesco, and Y. Dolak-Struss. The Keller–Segel model for chemotaxis with prevention of overcrowding: Linear vs. nonlinear diffusion. *SIAM Journal on Mathematical Analysis*, 38(4):1288–1315, 2006.
- [4] M. Burger, Y. Dolak-Struss, and C. Schmeiser. Asymptotic analysis of an advection-dominated chemotaxis model in multiple spatial dimensions. *Communications in Mathematical Sciences*, 6(1):1–28, 03 2008.

- [5] V. Calvez and J. A. Carrillo. Volume effects in the Keller-Segel model: energy estimates preventing blow-up. *J. Math. Pures Appl. (9)*, 86(2):155–175, 2006.
- [6] M. Di Francesco and J. Rosado. Fully parabolic Keller-Segel model for chemotaxis with prevention of overcrowding. *Nonlinearity*, 21(11):2715–2730, 2008.
- [7] M. Efendiev and A. Zhigun. On a ‘balance’ condition for a class of PDEs including porous medium and chemotaxis effect: non-autonomous case. *Adv. Math. Sci. Appl.*, 21(1):285–304, 2011.
- [8] H. W. Engl, M. Hanke, and A. Neubauer. *Regularization of inverse problems*, volume 375 of *Mathematics and its Applications*. Kluwer Academic Publishers Group, Dordrecht, 1996.
- [9] L. C. Evans. *Partial Differential Equations*, volume 19 of *Graduate Studies in Mathematics*. American Mathematical Society, 1998.
- [10] H. Feldthardt, A. Rösch, and M. Winkler. Parameter identification and optimal control of a chemotaxis problem. In *Oberwolfach Report*, volume 58, pages 3457–3459, 2012.
- [11] K. R. Fister and M. C. McCarthy. Optimal control of a chemotaxis system. *Quart. Appl. Math.*, 61(2):193–211, 2003.
- [12] K. R. Fister and M. L. McCarthy. Identification of a chemotactic sensitivity in a coupled system. *Mathematical Medicine and Biology*, 25(3):215–232, 2008.
- [13] P. Grisvard. *Elliptic Problems in Nonsmooth Domains*. Pitman, Boston, London, Melbourne, 1985.
- [14] T. Hillen and K. Painter. Global existence for a parabolic chemotaxis model with prevention of overcrowding. *Adv. in Appl. Math.*, 26(4):280–301, 2001.
- [15] T. Hillen and K. J. Painter. A user’s guide to PDE models for chemotaxis. *J. Math. Biol.*, 58(1-2):183–217, 2009.
- [16] D. Horstmann. From 1970 until present: the Keller-Segel model in chemotaxis and its consequences. I. *Jahresber. Deutsch. Math.-Verein.*, 105(3):103–165, 2003.
- [17] D. Horstmann. From 1970 until present: the Keller-Segel model in chemotaxis and its consequences. II. *Jahresber. Deutsch. Math.-Verein.*, 106(2):51–69, 2004.
- [18] W. Jäger and S. Luckhaus. On explosions of solutions to a system of partial differential equations modelling chemotaxis. *Trans. Amer. Math. Soc.*, 329(2):819–824, 1992.
- [19] B. Kaltenbacher and J. Schöberl. A saddle point variational formulation for projection-regularized parameter identification. *Numer. Math.*, 91(4):675–697, 2002.
- [20] E. Keller and L. Segel. Initiation of slide mold aggregation viewed as an instability. *J. Theor. Biol.*, 26:399–415, 1970.
- [21] E. F. Keller and L. A. Segel. Model for chemotaxis. *Journal of Theoretical Biology*, 30(2):225 – 234, 1971.
- [22] O. A. Ladyzenskaja, V. A. Solonnikov, and N. N. Ural’ceva. *Linear and Quasi-Linear Equations of Parabolic Type*. American Mathematical Society, 1968.
- [23] P. Laurençot and D. Wrzosek. A chemotaxis model with threshold density and degenerate diffusion. In *Nonlinear elliptic and parabolic problems*, volume 64 of *Progr. Nonlinear Differential Equations Appl.*, pages 273–290. Birkhäuser, Basel, 2005.
- [24] K. J. Painter and T. Hillen. Volume-filling and quorum-sensing in models for chemosensitive movement. *Can. Appl. Math. Q.*, 10(4):501–543, 2002.
- [25] C. Patlak. Random walk with persistence and external bias. *The bulletin of mathematical biophysics*, 15(3):311–338, 1953.
- [26] B. Perthame. *Transport equations in biology*. Frontiers in Mathematics. Birkhäuser Verlag, Basel, 2007.
- [27] V. Rajitha. *Chemotaxis of Escherichia coli to controlled gradients of attractants: Experiments and Mathematical modeling*. PhD thesis, Indian Institute of Technology Bombay, 2009.

- [28] V. Thomée. *Galerkin Finite Element Methods for Parabolic Problems*. Springer-Verlag, Berlin, 1984.
- [29] D. Wrzosek. Volume filling effect in modelling chemotaxis. *Mathematical Modelling of Natural Phenomena*, 5:123–147, 1 2010.