

A APPENDIX: COMPREHENSIVE SETS OF GRAPHS

A.1 Distribution Graphs

Figures 5, 6, and 7 show the results of the comparisons between BLADE and the baseline on the four benchmark problems with two, four, and eight clients, respectively.

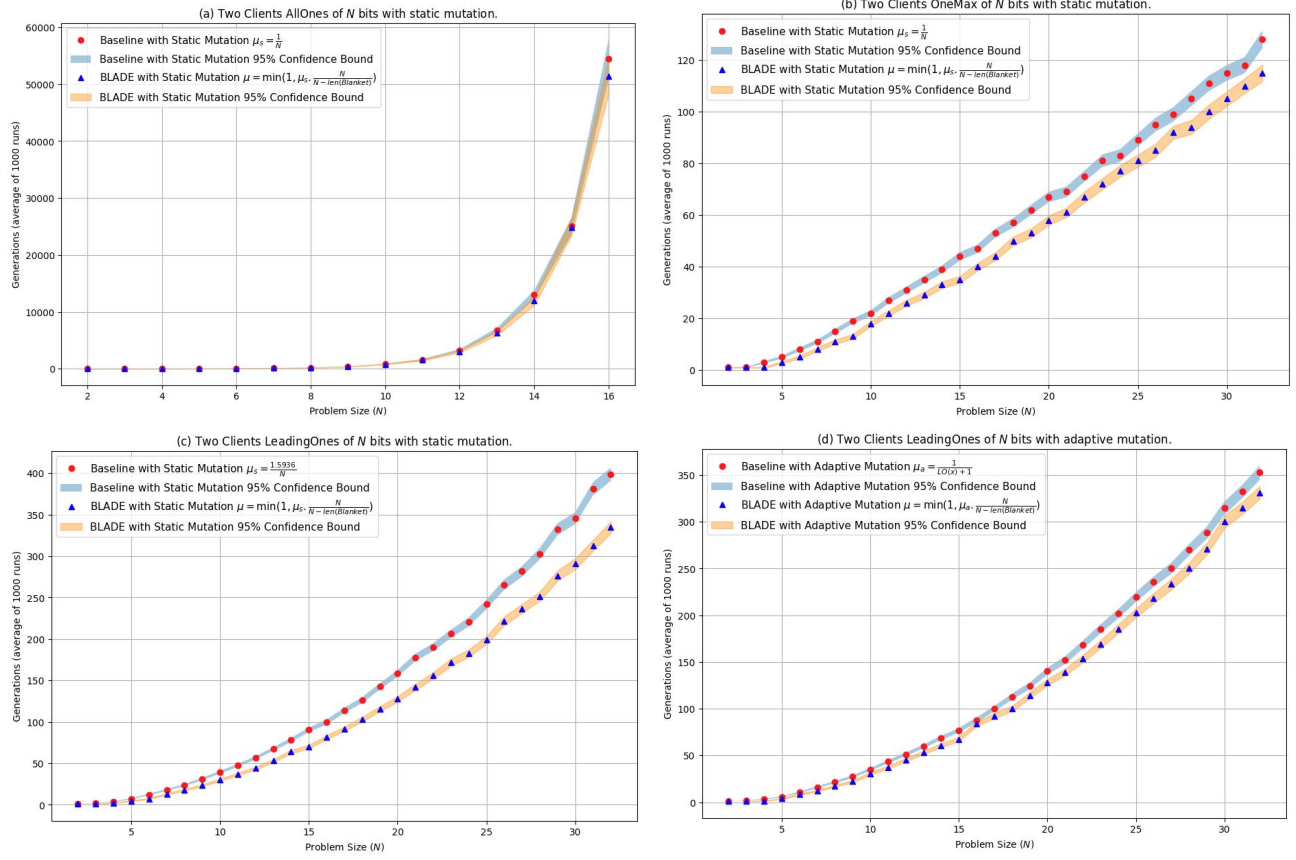


Figure 5: A comparison between BLADE and the baseline across the four benchmark problems with distribution over *two* clients; the experimental and display details are the same as in Figure 3. BLADE converges significantly faster than the baseline.

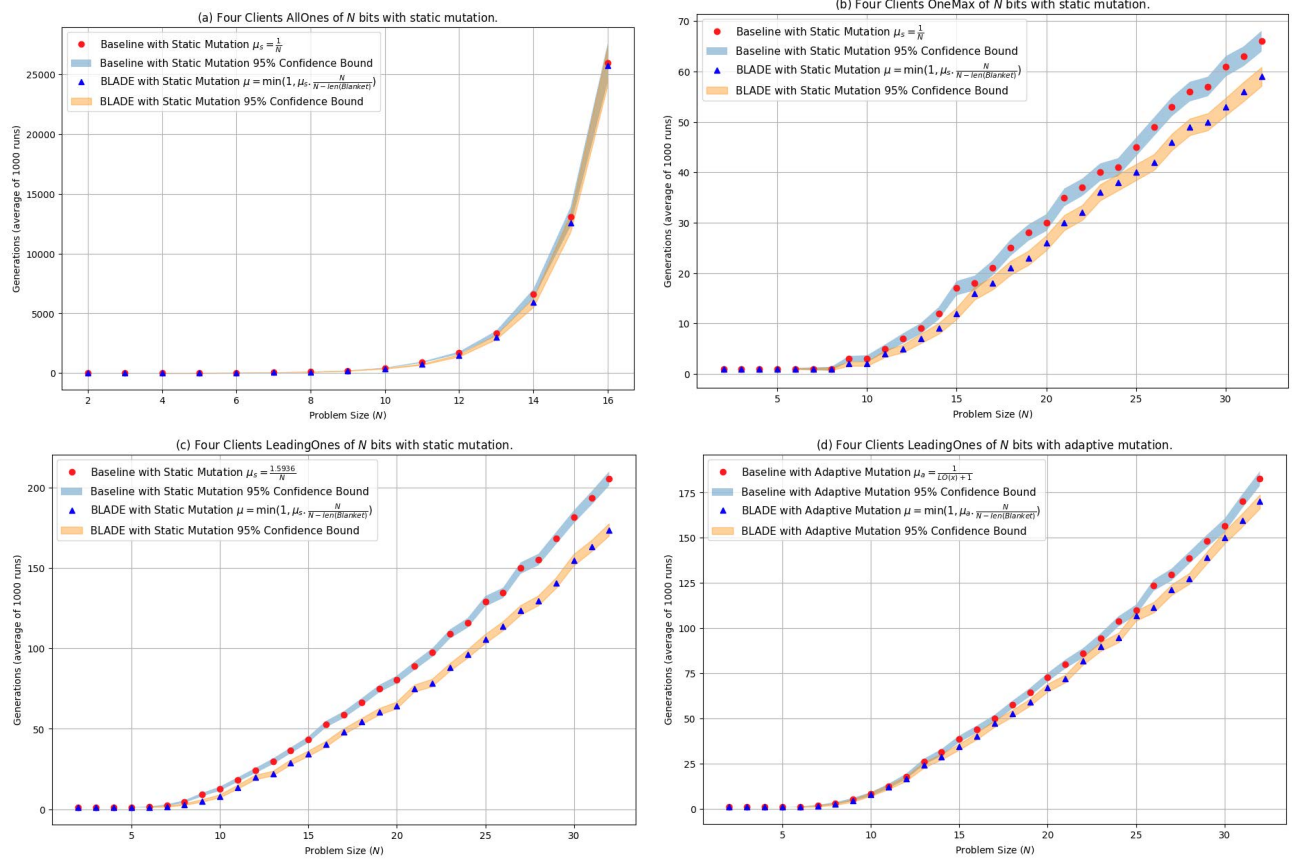


Figure 6: A comparison between BLADE and the baseline across the four benchmark problems with distribution over *four* clients; the experimental and display details are the same as in Figure 3. BLADE converges significantly faster than the baseline.

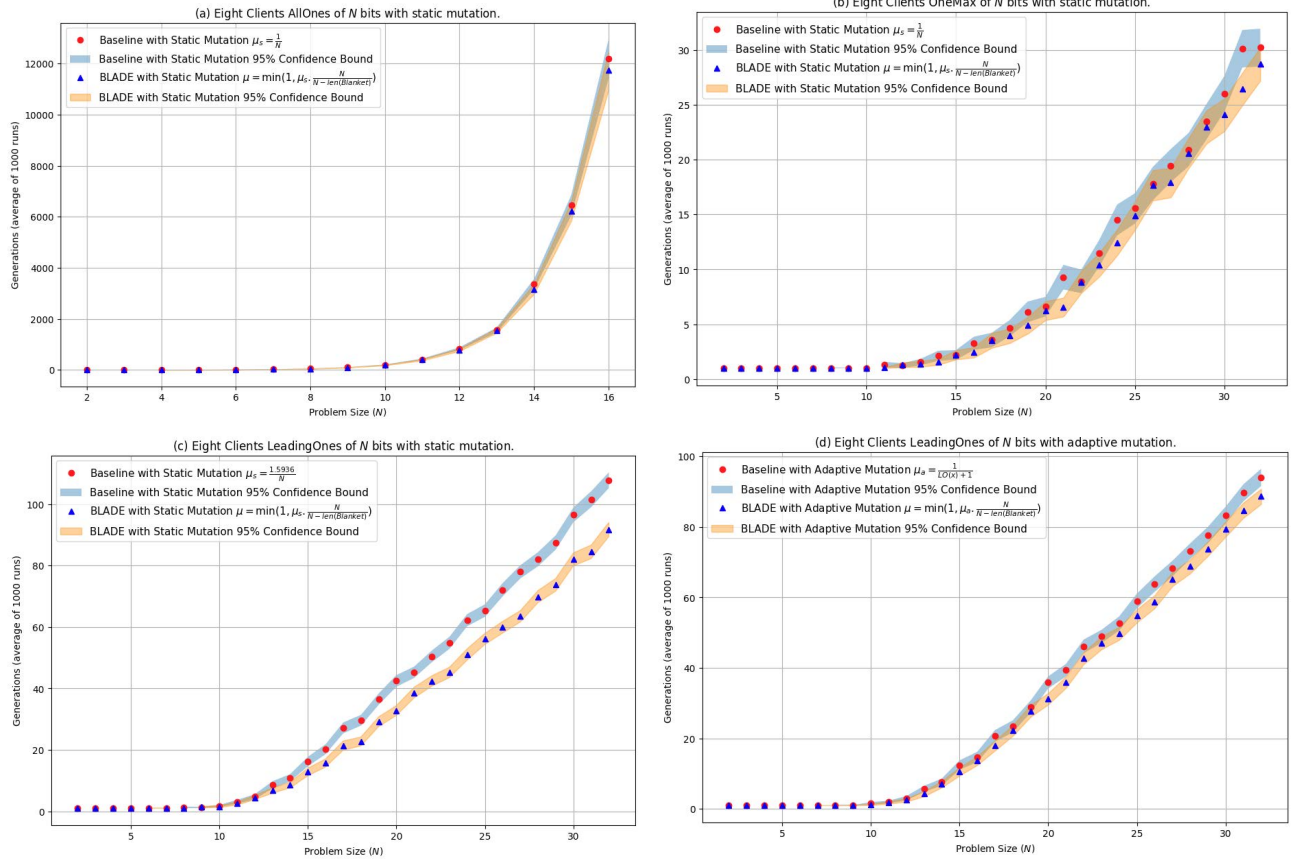


Figure 7: A comparison between BLADE and the baseline across the four benchmark problems with distribution over *eight* clients; the experimental and display details are the same as in Figure 3. BLADE converges significantly faster than the baseline.

A.2 Synergy Graphs

Figures 8, 9, and 10 compare the improvement ratios of BLADE and the baseline on the four benchmark problems with two, four, and eight clients, respectively.

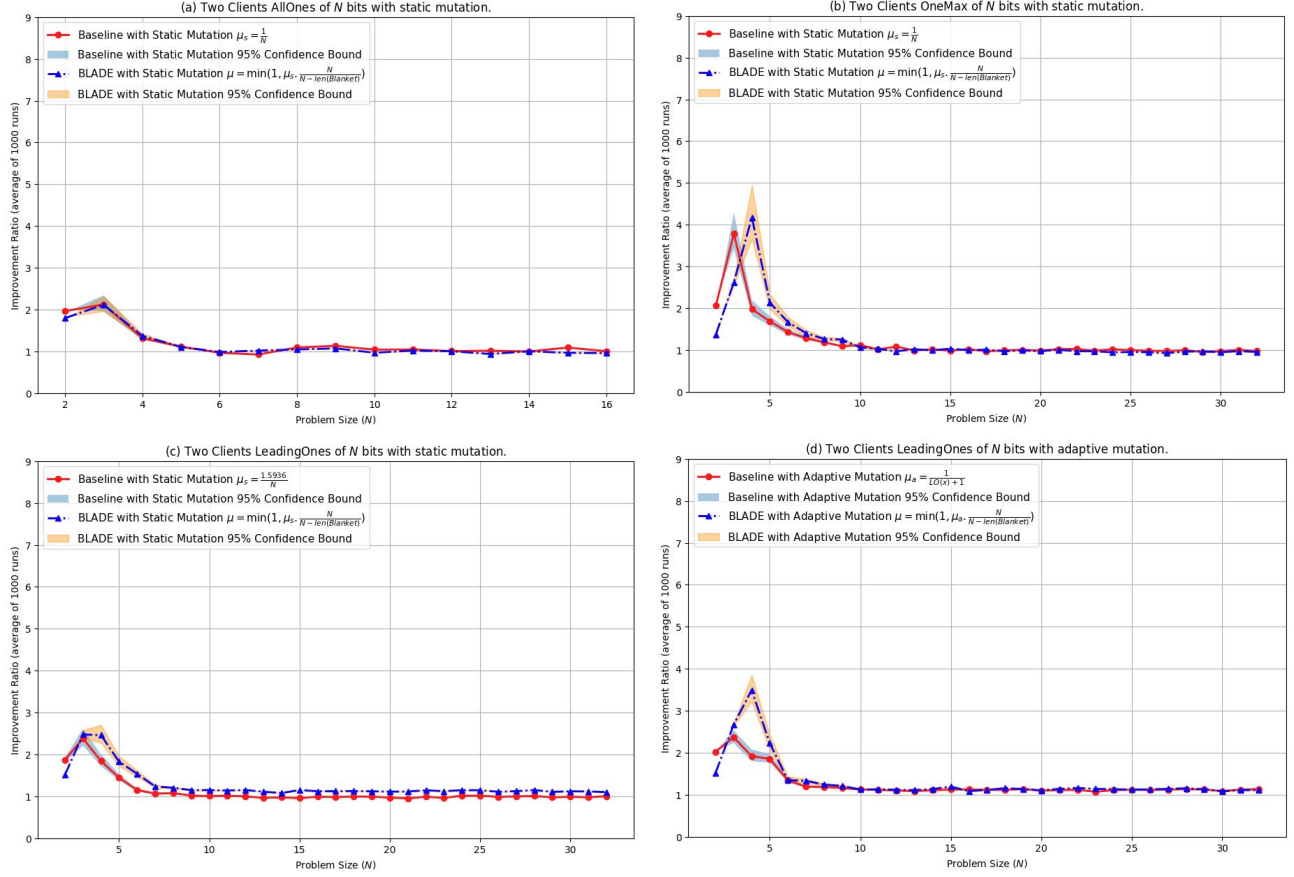


Figure 8: A comparison of the speedup ratio of BLADE vs. the baseline on the four benchmark problems with distribution over *two* clients; the experimental and display details and conclusions are similar to those in Figure 4.

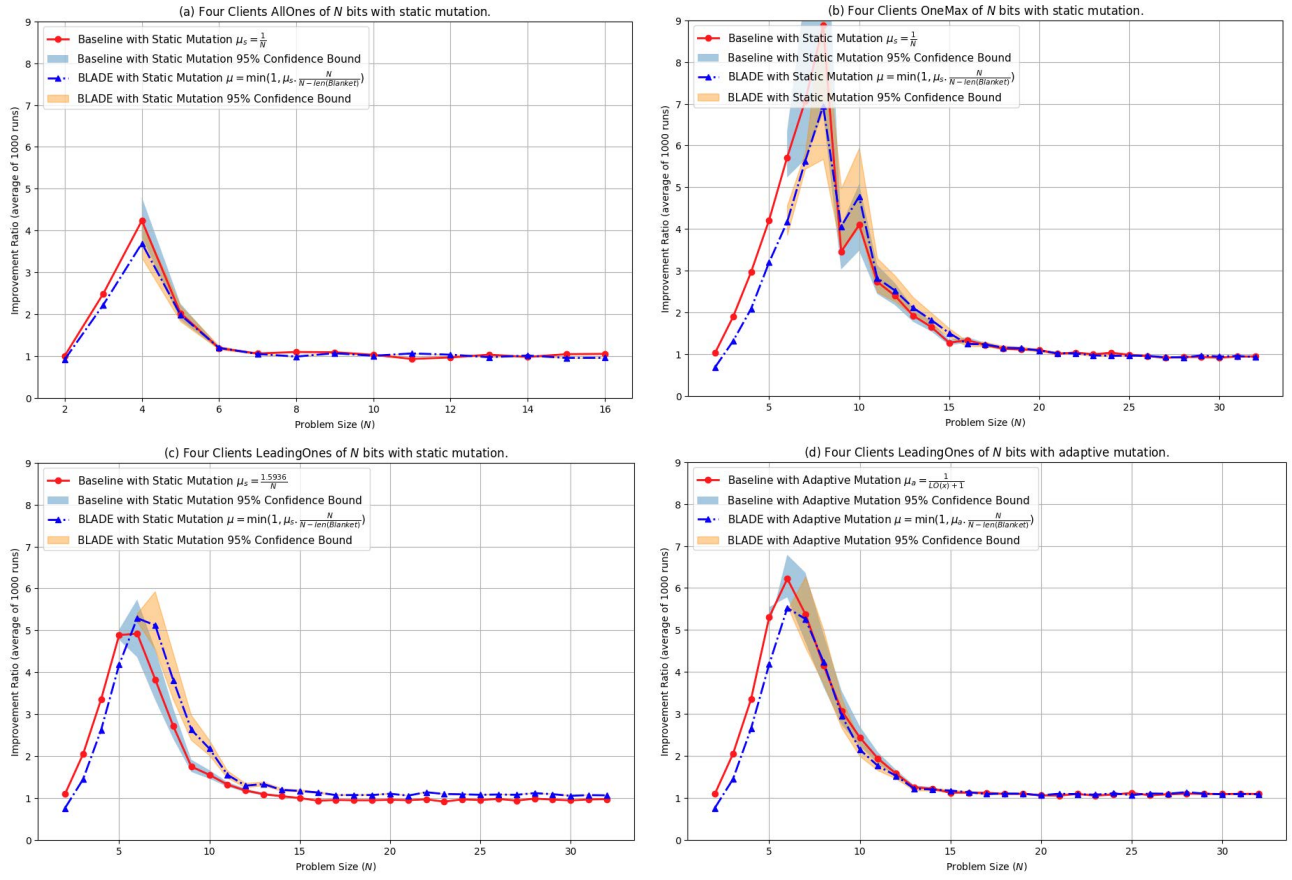


Figure 9: A comparison of the speedup ratio of BLADE vs. the baseline on the four benchmark problems with distribution over *four* clients; the experimental and display details and conclusions are similar to those in Figure 4.

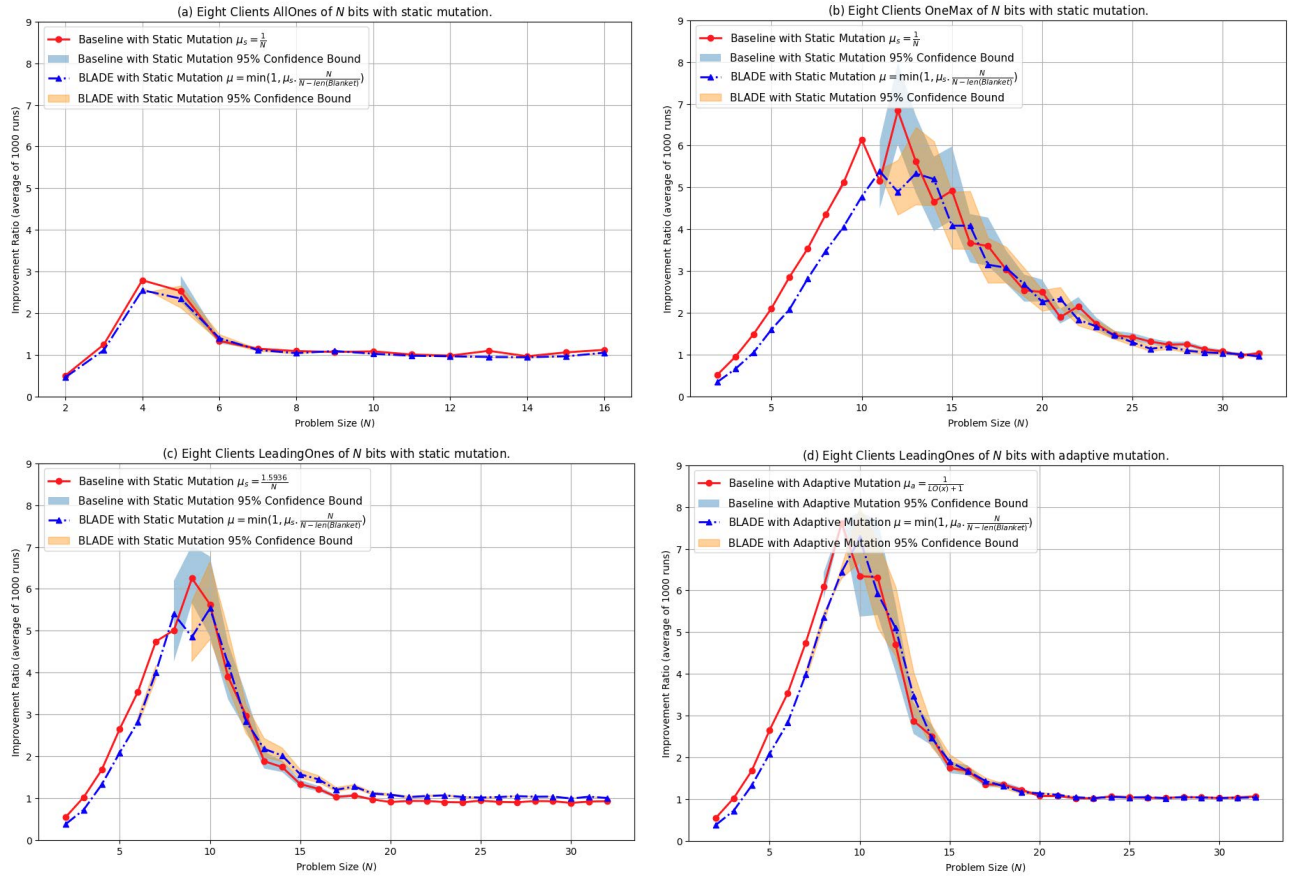


Figure 10: A comparison of the speedup ratio of BLADE vs. the baseline on the four benchmark problems with distribution over *eight* clients; the experimental and display details and conclusions are similar to those in Figure 4.