



Polychannel Systems for Mass Digital Communication

A new type of distributed computer system looks toward the time when computers will be used by everyone everywhere.

David K. Gifford

We describe a new type of distributed computer system that looks beyond workstation and local area network assumptions towards the time when computers will be used by everyone at both home and the office. This new system is designed to provide sophisticated information services to an entire metropolitan area. We have combined digital broadcast channels and duplex communication channels in a *polychannel* system that uses predicate based database *content labels* to automatically route queries. Our thesis is that a polychannel system produces substantial cost and system scaling advantages while retaining the flexibility of client-server style duplex communication. Experimental data from a two year test of the Boston Community Information System (BCIS) with hundreds of users supports this thesis.

The overall goal of the BCIS project is to explore a new type of computer system architecture capable of providing sophisticated information services to every home and office in a city of perhaps a million people. As part of the project we have designed and implemented a system that addresses this goal, and tested it on a sample population in the Boston area.

We are interested in metropolitan area information systems because we believe that in the future computers will be the basis of a new mass communication medium far more powerful and important than the telephone. Computers have the intrinsic ability to autonomously react to incoming information, which permits computers to be an *active* medium for information as opposed to a passive medium, such as the telephone. For example, computers can inform us of important external events or take direct action based upon such events, according to our preprogrammed instructions. Furthermore, computers can be used to interpret documents that include computationally active elements.

In order to explore the potential of computers as a communication medium we started the BCIS project in September, 1982. The central idea of the project was to use both digital broadcast for mass data communication and duplex communication in a single unified frame-

work. Our thesis was that this single framework would integrate the cost and scale advantages of digital broadcast with the flexibility of duplex communication.

Our project has resulted in a new approach to distributed computer systems which we believe will substantially broaden their application. Existing distributed computer systems provide each computer with a duplex network attachment used to communicate with other computers. We propose to add to this basic architecture one or more low-cost digital broadcast facilities that will provide mass digital communication to all of the computers in a distributed system. Our thesis is that the provision of a digital broadcast channel will permit distributed systems to scale in size beyond the limits of present technology and to offer new kinds of services.

We call systems that include both simplex and duplex channels *polychannel* systems. Each remote site in a polychannel system has a local database used to process most user requests. At each remote site this local database is maintained by a computer that selectively applies updates received from a digital broadcast channel. A central site sends database updates of general interest over the digital broadcast channel to all sites. Whenever a site's database cannot process a portion of a request, duplex communication is used to contact one or more remote server computers.

In general, when a large number of sites are interested in similar data a system designer can use a polychannel system instead of a traditional distributed system to reduce communication and server capacity requirements. Application areas include electronic mail systems, nationwide name servers, software distribution, and distributed database systems.

For example, in order to implement a polychannel airline reservation system we could provide each travel agency with a computer that would maintain a database of unsold seats. A travel agency's computer would keep its local copy of the unsold seat database up-to-date by applying updates received via a broadcast channel. Each travel agency's computer would only communicate with the central airline computer when it actually wanted to book or change a reservation.

An important benefit of a polychannel airline system is that a travel agency can implement sophisticated applications that require high-bandwidth access to the database of unsold seats. Yet there is no need for the airline to provide additional server or communication capacity to accommodate an agency's applications. Furthermore the load presented to the airline system is reduced from that of the standard duplex system approach.

In this article we also define a polychannel system and compare it with previous work; describe our prototype polychannel BCIS system; report experimental data from a test of the BCIS; and conclude with our view of how polychannel systems may change the way we view shared information.

THE POLYCHANNEL ARCHITECTURE

Previous work that is related to polychannel systems can be divided into two major categories:

- *Simplex* systems use digital broadcast transmission to send information to terminals or computers. Because simplex systems are inherently unidirectional they are limited to information distribution applications. However, they scale without limit since an incremental user site places no additional load on the distribution system. This zero incremental cost also provides simplex systems with a natural economic advantage.

Simplex information systems implemented before 1982 included Teletex systems and stock-quote services. Teletex [12] sends a set of preformatted pages to terminals via broadcast transmissions. Stock-quote services such as Lotus' Signal transmit financial data over simplex channel to personal computers where the data is processed and presented. We implemented the first text-based simplex system that used personal computers in 1984. In the last few years additional database systems similar to ours have become operational, including X*Press [13] and Mainstream Data [9]. X*Press Information Services transmits news information via cable television to personal computers. Mainstream Data provides a general purpose digital broadcast service to major cities in the United States.

- *Duplex* systems offer interactive access to server computers via circuit switched connections (such as the telephone network) or packet-switched networks. Duplex systems can provide a full range of services but server capacity must grow linearly with the number of system users. Thus duplex systems do not have the same economy of scale found in simplex systems.

All commercial information retrieval systems use duplex modem based communication to connect terminals to a central time-sharing system. For example, France's Minitel, Dow-Jones' News Retrieval, and Mead Data Central's NEXIS all work on this principle.

Our use of duplex systems builds on recent work in distributed database systems. In a distributed database system (such as System R* [7]) duplex communication is used to enable data distribution among a confederation of cooperating computers.

A polychannel system is designed to integrate the advantages of duplex and simplex systems. A polychannel system is comprised of the following:

- Personal computers, one per user, for prescreening, processing, and presenting information.
- Server computers that implement services such as historical databases, transactional services, and electronic mail. The servers can be operated by many different organizations, and can be decentralized.
- One or more mass digital communication channels that broadcast information to the personal computers. Information can be transmitted via cable TV, direct broadcast satellite, subcarriers on normal TV or FM stations, baseband RF broadcast, local area networks, or on-hook ISDN subscriber loops. The information broadcast can include complete data records and programs for integration into a personal computer's local database, indices and abstracts of services available on server computers, electronic mail notifications, and server status information.
- A duplex communication system that permits computers to access each other on demand. The duplex communication system can be circuit or packet switched. It is possible for a single communication media (such as a telephone local loop) to provide access to both simplex and duplex communication services.
- System software that provides *location transparency*. A system is location transparent when it hides from a user where and how services are implemented. When a system is location transparent it can freely distribute data and processing in order to minimize the cost of request processing and to maximize the performance of the system. For example, we expect that in a polychannel system most user transactions will be performed by the user's personal computer. Users may be unaware that certain requests will be partially or completely processed by servers. The degree of location transparency provided by a polychannel system is a matter of design choice.

The advantages that polychannel systems offer over duplex or simplex systems can be summarized as follows:

- Polychannel systems scale beyond the limits of duplex systems. In a duplex system server capacity must grow linearly with the number of users because each user request is processed by a central server. Our experimental data suggest that over .99 of user information retrieval transactions can be locally processed in a polychannel system. Thus polychannel systems will require substantially less centralized server capacity than a duplex system.
- Polychannel systems offer significant cost advantages over duplex systems. Digital broadcast has a zero incremental cost per additional user. Thus information sent via broadcast can be made available at a relatively low price.
- Polychannel systems permit users to add substantial

value to broadcast data using preexisting personal computers. This potentially further lowers the cost of a polychannel system.

- Polychannel systems provide a much richer set of services than do simplex systems. In simplex systems there is no mechanism for users to communicate with one another or with a central server. Thus many important applications such as electronic mail and transaction processing that can not be provided in the framework of a simplex system.
- Polychannel systems provide a higher degree of privacy than do duplex systems. Because a polychannel system implements information filtering in a user's personal computer, a user's interest profile is never transmitted to a central server. Thus it is impossible for an intruder to gain access to this interest profile without physical access to the user's personal computer.

THE BOSTON COMMUNITY INFORMATION SYSTEM (BCIS)

The requirements of a community information system suggest a polychannel based architecture and well match the advantages of polychannel systems: a typical community based system will need to support over 10^5 users; users will want an inexpensive system; the system will need to support a broad spectrum of information and transaction based applications; and users will want to ensure that their detailed interests remain totally private.

We built the BCIS as an experimental test of our thesis that polychannel systems can implement a personal dynamic medium for an entire metropolitan area. The BCIS provides up-to-the-minute access to the *New York Times* and Associated Press. In addition to the *New York Times* and Associated Press information we ran limited tests that provided electronic mail, USENET bulletin boards, and programs via BCIS.

Figure 1 is a block diagram of the BCIS system.

- Server computers at our laboratory transmit database updates to remote sites and service user transactions. These servers continuously receive information from the *New York Times* and the Associated Press. As this information is received it is queued for transmission via our digital broadcast channel and is stored in a full-text database system. We receive over 3 MBytes of data per day from our information suppliers. High server availability and reliability are achieved by our use of two server computers in an alternate-main configuration.
- We broadcast articles via a digital radio channel as soon as the articles are received by our servers, and then periodically thereafter for two days. The channel carries 20 MBytes of articles per day. The broadcast channel we use is the 92 KHz FM SCA channel on WERS-FM, which can be received within 10 to 20 miles from downtown Boston. Over this SCA channel we transmit asynchronous serial data (8 data bits, 1 start bit, 1 stop bit) at 4.8 KBits/second with fre-

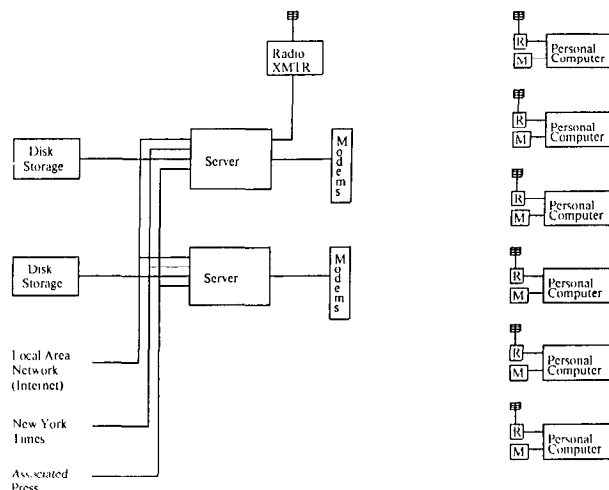


FIGURE 1. Boston Community Information System Block Diagram

quency shift keying (0 is transmitted as 89 KHz and a 1 is transmitted as 95 kHz) [1]. The packet radio receiver for this channel (see photo) has an RS-232 output, is about the size of a small paperback book, and costs less than \$100 to manufacture (including all cabling).

- Each user has a personal computer that responds to requests and maintains a local database drawn from the digital broadcasts. Requests are forwarded to a server computer when they can not be processed locally. The contents of the local database are defined by the user via a user specified filter that describes what information should be locally retained. A filter thus provides each user with the ability to define what the front page of his or her own personal newspaper will contain.
- Certain personal computers also include auto-dial modems that permit the personal computers to forward queries to a server for processing. A user will notice a delay when a query is forwarded to a server, but otherwise the use of server computers is completely transparent.

We will now describe the system's user interface, how content labels are used to route queries, and our communication protocols. Further details on the architecture of the system can be found in [2, 6].

The User Interface. The user interface to the BCIS System is shown in Figures 2, 3, and 4. The filter, summary, and article windows form the primary interface to the system, and show successively more detail about topics. A user can switch between these windows with a single keystroke. Pop-up menus and keyboard commands are used in a uniform way in all of the windows. For example, a carriage-return processes the current query regardless of what window is in view.

The filter window (Figure 2) contains a prioritized listing of a user's interests. The user edits the filter window to determine the information that his or her

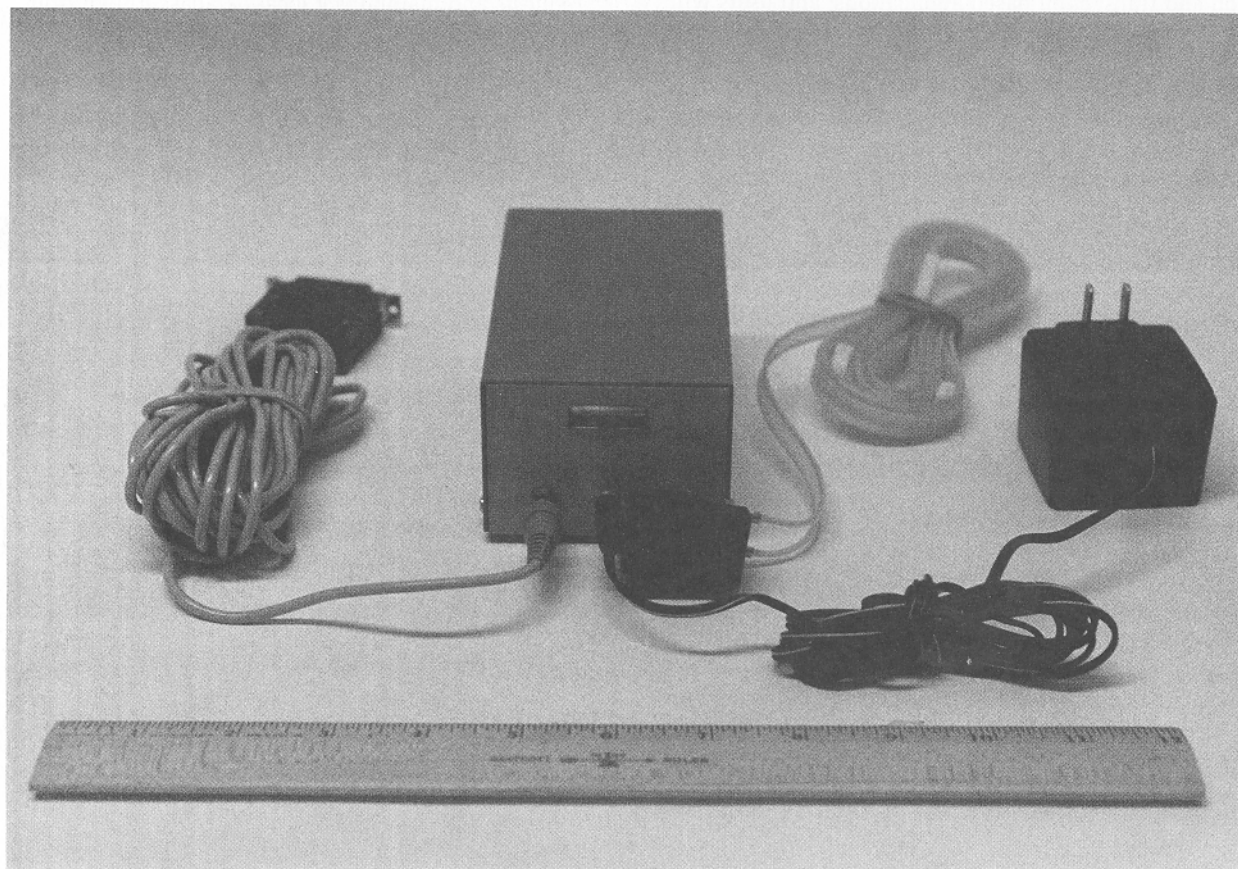
```

Filter Window (line 4) Viewing lines 1 through 22 of 22      aug 20, 12:40
( 1) (type: nyt) (subject: newssummary)
( 1) (subject: briefing)
( 0) (subject: findigest)
( 4) (subject: business digest)
( 2) (subject: wall street)
( 0) (subject: patents or technology)
( 0) (subject: telerate or rates)
( 0) forecast* boston vicinity
( 0) (subject: calendar)
( 0) (subject: movie*)
( 5) ibm or compaq or (apple and com
( 5) wang or "data general" or "digi
Cancel Query (ESC)
( 8) "star wars" or sdi or "strategic defense"
( 1) health risk
( 0) mit or "massachusetts institute"
( 29) harvard (category: not sports)
( 2) aids
( 34) (category: news) (priority: urgent ! bulletin ! flash)
( 87) *

Error: sa
The receiver is running on port 1
Welcome to the MIT Community Information System - Type F1 for help

```

FIGURE 2. Filter Window



The packet radio receiver used in the Boston Community Information System is 5" × 3" × 2" and includes antenna, power supply and RS232 cable.

Summary Window (1) Viewing match 1 through 2 of 2 aug 20, 12:41

→ **aug 20, 12:22 (41 lines) Urgent (Financial)**
 NEW YORK (AP) _ The stock market edged upward in an erratic session today, faced with new evidence of sluggishness in the economy.

aug 19, 12:20 (47 lines) Urgent (Financial) (not read)
 NEW YORK (AP) _ The stock market moved low blue chip stocks sported gains.

Do nothing	(ESC)
Show window selection menu	(F3)
Show current article	(A-R)
Delete current article	(A-D)
Delete all articles in list	(A-X)
Print current article	(A-P)
Print all articles in list	(A-A)
Exit to DDS	(A-Y)

(subject: wall street)
 The receiver is running on port 1
 Welcome to the MIT Community Information System - Type F1 for help

FIGURE 3. Summary Window

Article Window [A08204.432] Viewing lines 1:21 of 42 aug 20, 12:43

type: AP Copyright 1986 The Associated Press
 priority: Urgent
 date: 08-20-86 1222EDT
 category: Financial
 subject: PM **Wall Street** Noon
 text:

NEW YORK (AP) _ The stock market edged session today, faced with new evidence of economy.

The Dow Jones average of 30 industrial stocks closed at 2,858.75 at noon on Wall Street.

Gainers outnumbered losers by about 100 to 80 in the first hour of New York Stock Exchange-listed issues.

Before the opening, the Commerce Department said housing starts dropped 1.8 percent last month, which was considered an indicator of future construction activity.

The housing starts figure has now fallen for three consecutive months, something it had not done since 1981.

Housing has been one of the few bright spots in the economy this year. Brokers say that if activity in that sector dwindles, it could hurt the economy.

Do nothing	(ESC)
Show window selection menu	(F3)
Show next article	(A-N)
Show next unread article	(A-Z)
Delete, then show next article	(A-D)
Delete, then show next unread	(A-d)
Delete, then show summaries	(A-M)
Print current article	(A-P)
Exit to DDS	(A-Y)

(subject: wall street)
 The receiver is running on port 1
 Welcome to the MIT Community Information System - Type F1 for help

FIGURE 4. Article Window

personal computer will retain from the digital broadcast stream. The filter window serves as the "front page" of a user's personalized newspaper and shows how many articles have been received by filter line. Filter lines can easily be edited and reprioritized with keyboard commands. A user can set triggers on certain filter lines so that when a preselected article arrives the computer will either notify the user or it will print out the article.

The summary window (Figure 3) contains a short summary of each article satisfying the current query. This summary is composed of the first sentence of each matching article.

The article window (Figure 4) displays the currently selected article. This window allows articles to be viewed, printed, and deleted.

The performance of the system is quite good. On an IBM-AT sub-second response is provided for local query processing and article display.

Content Labels for Query Routing. Database content labels are used by the system to automatically route a query to the database or databases where the query can be processed. A content label is a succinct description of the data contained in a database. For example, a content label could state that a database contained all *New York Times* movie reviews for 1986, or it could state that a database contained all articles by Quindlen in 1989. Content labels and database queries are expressed using predicates.

Content labels are used to route queries and updates. In order to route queries to appropriate databases we use a simple theorem prover. If a query predicate implies a database content label predicate then we know that the query can be processed at the database. Database updates must be sent to all databases whose content label the updates satisfy.

Figure 5 illustrates the different relationships that can hold between a query and a content label. Query Q1 describes a potential result set that is only partially contained in DB1, but is contained entirely in DB2. Thus Q1 is processed at DB2. Query Q2 describes a potential result set that is only partially contained in DB2. In this case the alternative query Q2' is generated and the user is asked for confirmation before Q2' is processed. Query Q3 describes a potential result set that is not contained in DB1 or DB2. Thus Q3 is rejected.

The content label of a personal database is a user's filter list. Because the filter list precisely describes what is in a user's personal computer, the list is used to determine which queries can be processed locally, and which queries must be forwarded to a server.

The content labels of available server computers are kept in a configuration file used by the personal computer's database system. The system will send queries that can not be processed locally to an appropriate server. When a query can not be processed anywhere the system will so inform the user.

Servers in fact are comprised of many independent databases. These independent databases are not visible

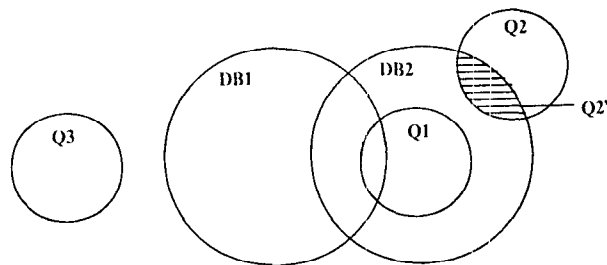


FIGURE 5. Possible Relationships between a Query and a Database Content Label

from outside of the server, but once a query enters a server a second level of query routing is used to dispatch the query to appropriate internal databases. This organization permits internal databases to be moved between servers and to be moved on and off line as a unit.

Communication Protocols. Our simplex communication protocol allows us to achieve any desired level of reliability while using an unreliable simplex link [1]. Data blocks (such as articles) are fragmented into packets for transmission. Each packet includes a checksum for error detection, and packets are repeated for error correction. Packet repeats are separated in time to minimize the effects of burst errors. We operate with a packet size of 128 bytes with a packet repeat count of 2, allowing us to transmit more than 20 Mbytes of data in 24 hours. In our primary service area around Boston the raw bit error rate of our simplex channel is less than 10^{-6} , and after error correction it is less than 10^{-8} .

All the data we broadcast is cryptographically protected against unauthorized use. Each user has a private *key ring* stored in his or her personal computer that describes the data that the user is allowed to receive. Each data block we transmit is encrypted under a nonce key. After the nonce key has been encrypted with a data source specific master key, this nonce key is transmitted along with the block. Our bulk encryption algorithm employs a linear feedback shift register with a non-linear output function. Further details on our broadcast protocols and cryptographic techniques can be found in [1].

Our duplex communication protocol provides the advantages of remote procedure call (RPC) while allowing us to make effective use of high-latency and low-bandwidth channels [4]. A problem with remote procedure call is that a round-trip delay is incurred for each message that limits the performance of RPC on moderate performance duplex channels. We have developed the *channel model* to overcome this limitation of RPC. The channel model incorporates remote pipes along with remote procedures. A *pipe* is like a remote procedure, except that calls on a pipe do not return values and do not block a caller. Pipe calls are optimized for maximum throughput, unlike remote procedure calls which are optimized for minimum delay. In order to control the concurrency introduced by pipes we introduce the

idea of a *channel group*. All the calls on a channel group made by a single caller are serially processed in the order in which they were made.

EXPERIMENTAL RESULTS

We designed the experimental test of the BCIS to answer the fundamental question “*Is the information system technology that we have developed useful?*” In order to address this question, we performed a longitudinal study on the use of the system by 200 people outside of our research group.

During late 1982 and early 1983, we worked out the design of an initial system. Once the design was completed in early 1983 we implemented a prototype. This prototype was operational at a site outside of our research group in April 1984, and a small initial test population of 15 users was established. Based upon the experience with this prototype, the system was largely reimplemented during late 1984 and early 1985 to prepare it for a larger scale user test. The initial digital radio channel was replaced with a more reliable design, and the software was enhanced to provide new services.

In 1985, we formulated a plan for a two year test of the BCIS at approximately 200 local area homes and businesses. The test started on December 17, 1985 with Version 6.0, a simplex only version of BCIS. On October 7, 1986, users received Version 8.17 of the system, a polychannel version of BCIS. In Version 8.17, queries which cannot be processed at a user's personal computer are automatically forwarded, via modem, to server computers at MIT for processing.

Experimental Design

The experimental test of the system was performed on a self-selected population of computer literate volunteers. In order to simplify the test subjects were required to own or have access to an IBM Personal Computer. Participants were recruited via advertisements in the MIT paper *Tech Talk*, a mailing to all MIT computer science professors, announcements at the IBM PC users group of the Boston Computer Society, notices in Boston Computer Society publications, and by asking existing participants to recruit new participants. The professional profile of the participants is: 22 percent students, 21 percent professors, 15 percent hardware or software engineers, 9 percent administrators, 6 percent research scientists, 4 percent physicians, and 3 percent librarians. The remaining 20 percent of the population is comprised of professionals who are not computer scientists.

Participants were given the system for free. However, each participant was obligated to complete and return a two-page questionnaire which we mailed out each month. With the questionnaire, we sent a one page newsletter and a postage paid return envelope. At the onset of the experiment we told participants that they would have to return the BCIS system which was loaned to them if they failed to complete and return their monthly questionnaires. In order to reinforce this

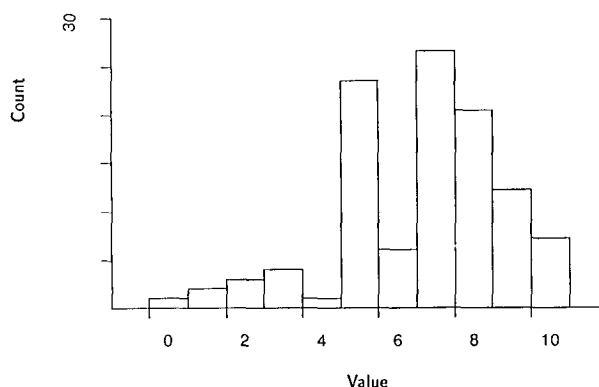


FIGURE 6. Histogram of reported value of system on a scale of 0 to 10, February 1987, N = 105

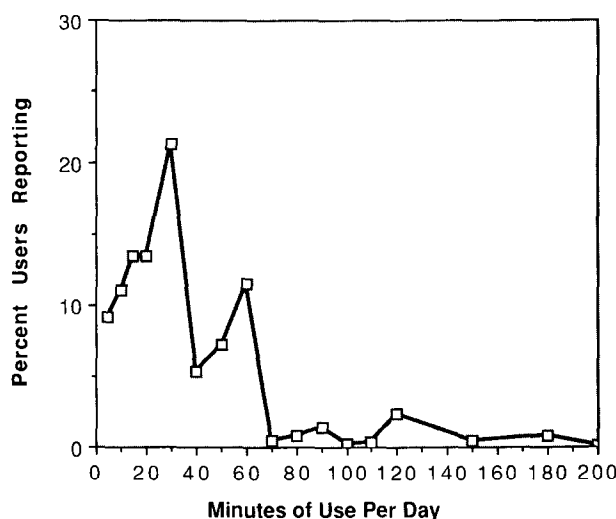


FIGURE 7. Percent of users reporting various amounts of time spent sitting at the keyboard and using the system per day in minutes, data grouped into 5 minute intervals, April 1986 to January 1987, N = 969

stipulation, each participant signed a legal agreement to this end when they joined the experiment, along with a statement that they would not redistribute information received via the experiment. Every month, telephone calls were made to participants who had not sent in their questionnaires for the prior two months. As the experimental data show, some of these users returned their systems and some began again to mail in the questionnaires. Our original user software included a user monitoring capability, but we decided not to use this facility because of privacy and technical considerations.

Monthly questionnaires consisted of short answer questions and an essay topic. The short answer questions were designed to focus on particular content, technology, or overall system issues. The essay topics were designed for evaluations and opinions on a wide variety of qualitative issues. All questionnaire responses are confidential.

We designed the questionnaires to separate partici-

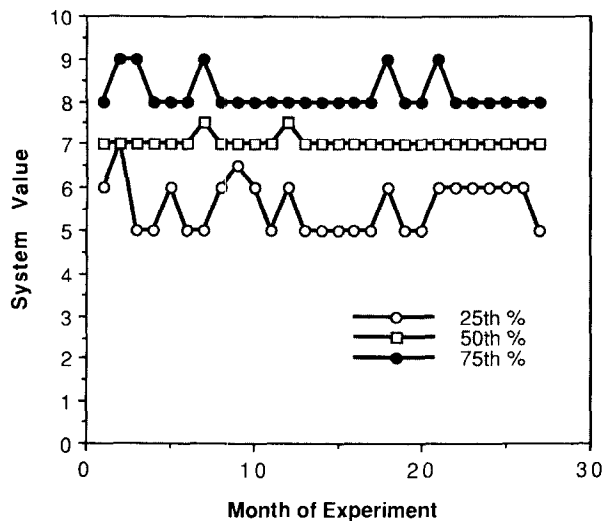


FIGURE 8. 75th, 50th, and 25th percentile of reported system value on a scale of 0 to 10 plotted against month of test

participants' reactions to the information provided via the system from their reactions to the technology we have developed. Our experimental results show that people were largely pleased with the information provided via the system. Therefore, we believe the experimental results on the technology aspects of the system do not reflect unhappiness with the content the system provides.

In summary, our results are likely to be more favorable than would be reported by the general population of personal computer users because of the selection method for our experimental population. These people are most likely "early adopters" or users who would be likely to use the system initially. The predictive power of the data from these users is unclear. However,

within this constraint we have tried to perform a fair test of the technology we have developed.

Experimental Conclusions

A summary of our experimental results follows. In the summary we have included references to questionnaire dates in square brackets, e.g. [February 1986], and averages of 0 to 10 scale ratings are shown with the maximum value of the scale, e.g. 6.6/10. Our 1986 primary data are available in [3], and our 1987 primary data are available in [5].

The system provides a useful service. Our major conclusion is that a polychannel system provides a valuable service, based upon data from the experimental test. Participants rated the overall system as being valuable (6.6/10 [February 1987]) and said they felt better informed with the system (7.4/10 [February 1987]). Figure 6 is a histogram of how 105 of our participants (out of a total user population of 156) rated the value of the system [February 1987] on a 0 to 10 scale. On our 0 to 10 scale 0 was labeled "no value," 5 was labeled "some value," and 10 was labeled "great value." Perhaps more importantly participants reported that they actually use the system an average of 31-minutes a day, during which time they scan 46 article summaries, 21 articles, and carefully read 8 articles [February 1987]. Figure 7 shows how much time participants reported that they actually use the system [April 1986 to January 1987].

The number of users of the system peaked at 176 in October 1986. No new large scale distributions of systems were subsequently done, and the user population stabilized at 130 within about one year. Some of the returned systems were never used, and some were returned due to system failings which are described at the end of this section. Over 50 of the participants filled out questionnaires every month.

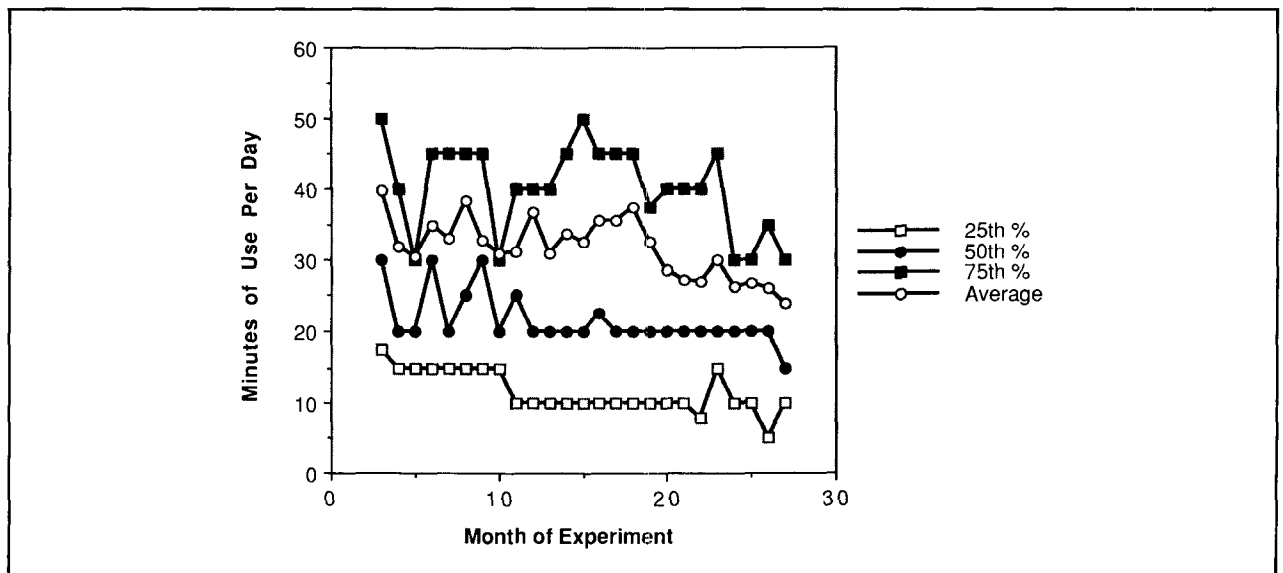


FIGURE 9. 75th, 50th, and 25th percentile, and average of reported time spent sitting at the keyboard and using the system per day in minutes plotted against month of test

Participants reported that they would pay an average of \$12.42 a month [January 1987] for the system, which further supports our conclusion that the system is valuable. In May 1988 we instituted a \$5 per month fee and stopped sending out surveys. Of the 131 systems in use at that time, 89 users (68 percent) decided to continue with the experiment and began paying. This corresponds well to the 73 percent of the participants who said they would be willing to pay for the system [January 1987].

Reported value and use of the system over time shows continued interest in the system. Figure 8 is a plot of the 75th percentile, 50th percentile, and 25th percentile of reported value of the system over a two year period. Figure 9 is a similar plot that shows how many minutes per day users report they use the system. In Figure 9 it is unclear if the drop in the 25th percentile line represents a drop in interest or an increase in user efficiency.

As one might expect users who report the system is valuable tend to use it more. Figure 10 is a scatter plot of reported system value *vs.* the reported number of minutes per day of system use.

It appears that users who run the system more find it of greater value. Figure 11 is a scatter plot of reported minutes per day of system operation *vs.* reported system value. It is also possible that users who find the system more useful tend to run it more.

Participants reported their use of the system was slightly biased towards personal as opposed to professional use (4.1/10 [October 1986]), and that the system caused them to use their personal computers more frequently (7.0/10 [March 1986]). Users felt that the system has more applications in the business world (6.8/10 [February 1987]) than in the home environment (4.8/10 [February 1987]). Participants reported that 30 percent of the systems were installed in an office [July 1987].

When looking for specific information participants preferred to use the system compared to a newspaper (6.7/10 [February 1987]) but when reading for general information they slightly preferred a newspaper (4.8/10 [February 1987]). Participants reported they read newspapers less frequently (4.29/10) and watch television news less frequently (4.5/10 where 0 is less frequently, 5 is the same frequency, and 10 is more frequently [February 1987]).

Comments by users include "I think the system is great. I've gotten so used to it the only time I read a newspaper is when I find it on the subway, and even then, I know most of the stories" [August 1986]; "We are quickly getting hooked on our daily information gathering via the air waves" [August 1986]; and "... my interest in the system remains undiminished. If anything, I have become a more sophisticated user, more likely to add, change, or remove filter lines temporarily to capture articles of transient interest..." [August 1986]. The most negative comment we received was "I feel the software could be better designed. Also having to dedicate my computer to it is a hassle" [March 1986].

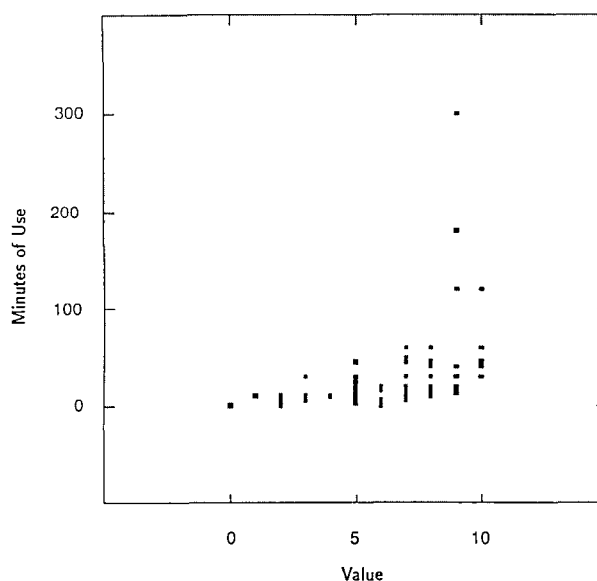


FIGURE 10. Scatter plot of reported system value on a 0 to 10 scale (x-axis) *vs.* reported time spent sitting at the keyboard and using the system per day in minutes (y-axis), February 1987

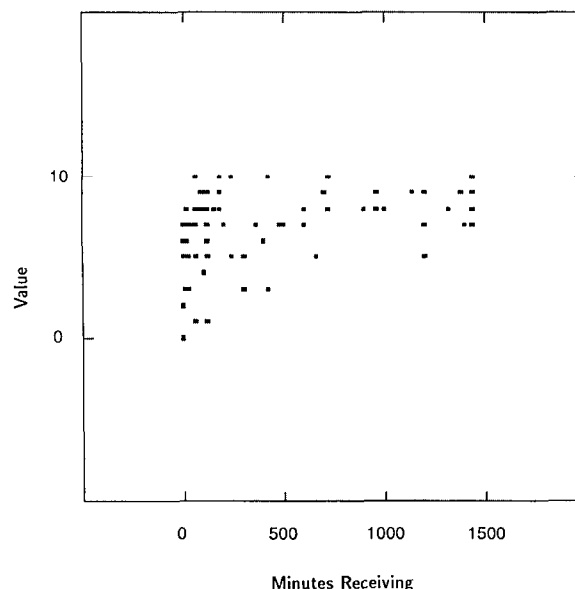


FIGURE 11. Scatter plot of reported time system receiving data per day in minutes (x-axis) *vs.* reported system value on a 0 to 10 scale, February 1987

The simplex component of the system is essential.

Participants rated the simplex system as very useful (7.0/10 [April 1987]). The average participant runs the simplex system on his or her personal computer about 8 hours a day to gather data, with 25 percent of the users running it 10 or more hours per day [April 1987]. In their written essays many participants describe the simplex system using terms such as "extremely valuable," "quite useful," and "absolutely vital for the BCIS to be successful" [April 1987].

The duplex component is important. The duplex part of the system appears to be an important component that strengthens the system even though participants do not use it frequently. Duplex users have the additional ability to search a full-text database of the past 90 days of the *New York Times*. Users are aware when they use the duplex system because it automatically dials their telephone and duplex database response is slower than local database response.

Participants rated the duplex system as somewhat useful (4.3/10 [April 1987]). Thus the duplex system was reported to be less useful than the simplex system. (38 system [November 1987]). A contributing factor to this usage may be that 23 percent of the participants do not own modems [July 1986]. Some 49 percent of the users with modems did use the duplex system. The average user reported using the duplex system .8 times a week, with a duplex session lasting an average of 9 minutes [November 1987].

Participants reported the duplex component may be critical to the commercial success of the system (4.6/10 [May 1987]), and indicated that they would not be happy if the duplex component was eliminated (2.6/10 [May 1987]). In addition, several participants noted the synergism between the simplex and duplex components of the system in their written essays. For example, participants wrote "Broadcasting and remote access are integral parts of the whole system. The interactive (remote access) portion strengthens the passive (broadcasting) role of the system" [May 1987]; "I don't use the two-way part much, but I have found it very useful when I did use it. I feel both aspects are important" [May 1987], and "I like the 2-way system and use the system a lot more . . ." [January 1987].

Interestingly two participants wrote they found the duplex system much more useful than the simplex system, for example: "Broadcasting for general news is not useful to me. Remote access is useful."

Processing of information. Participants were enthusiastic about the filtering facilities offered by the system and had an average of 30 lines in their personal filters [March 1986]. Participants wanted the ability to use longer filter lines (7.2/10 [January 1988] and to turn filter lines on and off (7.5/10 [January 1988]). A common theme in essays was the need to keep refining filters to get the most value from the system. One participant wrote "First and foremost, I've built some skills at writing filters to catch the articles I want," and another wrote "I change, refine, and delete filter lines on a regular basis" [August 1986].

System failings. The most common complaint about the system was the need to dedicate a personal computer for its operation. Only a few users ran the system in the background. Participants reported they would pay \$90 for a "black box" that would receive articles of interest while their personal computer was turned off [January 1987]. Users also complained that it was difficult to produce appropriate filter lines and that duplicate articles were not adequately filtered out.

In March 1987 we sent a follow-up questionnaire to 90 former participants and we received 42 responses. The reasons most often cited for dropping out of the experiment were lack of time, poor radio reception, inadequate access to an IBM personal computer, and fear that continuous operation would damage a personal computer.

CONCLUSIONS

We have proposed a polychannel architecture for future distributed systems which is intended to combine the scale and cost advantages of simplex communication with the flexibility of duplex communication. Our experimental test of the BCIS has confirmed our hypothesis that this architecture can be used to provide a new type of useful service. Users reported that they found both the simplex and duplex parts of the system valuable, with most user requests being satisfied using data received via simplex transmission. Users liked the personalized filtering of information which created an active medium.

The major result of our work is that a polychannel system can be used to implement a personalized active communication medium at a fraction of the cost of previous duplex based approaches. Our experimental data show that people value both the duplex and simplex components of a polychannel system. Our data also show the users like their ability to use local computation and storage to add value to information.

Our work has extended previous research on new media forms [10] by performing experiments with a new type of electronic media. Our experimental data shows that polychannel systems overcome certain disadvantages present in previous electronic media. Specifically, no previous electronic media combines extensive user customization, high performance, low cost, and access to a very large database.

We expect that polychannel systems will become even more attractive in the future. Within 10 years the processor and memory of a complete IBM-PC class machine will be on a single VLSI part. This part will allow an IBM-PC class computer to be integrated into a standard telephone-like appliance. Emerging storage technologies will make it possible for us to use a polychannel system for creation of personal digital libraries. Digital broadcast to the home and office will be easier to accomplish via future versions of the telephone local loop. In addition, there will be a greater need for computer aided processing of information, since fiber optic technology will allow much more information to be delivered to us.

We expect the local computational power of polychannel systems will be used to interpret documents that contain computational elements. Application programs such as Hypercard make it very easy for non-programmers to create active documents. In the future such active documents will be an important communication medium because they allow us to represent knowledge with computational elements which are more reactive than is linear text on paper.



Members of the MIT Programming Systems Research Group who built and operate the BCIS that transmits data over a 25 mile radius to PCs from a transmitting site atop the tallest building behind them.

In sum, our experimental findings in the context of present technology trends suggest that polychannel systems will offer an important future alternative to traditional fully duplex distributed system designs. As our data show, these future systems will provide us with a new kind of personalized mass media. This mass media will offer us the ability to learn more about our world and to communicate more effectively with one another.

Acknowledgments. The success of the Boston Community Information System is due to the students and staff that have participated in its design, implementation, operation, and evaluation. In alphabetical order they are: Bob Baldwin, Steve Berlin, David Burmaster, Rob Cote, Ross Dreyer, Nathan Glasser, Bernard Gunther, Dawn Heitman, Fred Huettig, Ralph Hyre, Franklin Klein, Penny Lewis, John Lucassen, James O'Toole Jr., Kyle Peltonen, Mark Pinone, Susan Raisty, Doug Robinow, David A. Segal, Ellen Siegal, Mark Sheldon, Monica Strauss, Kendra Tanacea, Jeffrey

Yoon, and Roger Zee. I would also like to thank the test participants for their time and evaluations.

REFERENCES

1. Gifford, D.K., Lucassen, J.M., and Berlin, S.T. The application of digital broadcast communication to large scale information systems, *IEEE Journal on Selected Areas in Communications* SAC-3, 3 (May 1985), pp. 457-467.
2. Gifford, D.K., Lucassen, J.M., and Berlin, S.T. An architecture for large scale information systems, *Proc. 10th ACM Symposium on Operating System Principles* (Orcas Island, Washington, USA, December 1-4), ACM, New York, 1985, pp. 161-170.
3. Gifford, D.K., et al. *Boston Community Information System 1986 Experimental Test Results*, MIT/LCS/TR-397, MIT Laboratory for Computer Science, Cambridge, MA, August 1987.
4. Gifford, D.K., and Glasser, N. Remote pipes and procedures for efficient distributed communication, *ACM Trans. on Computer Systems*, (August 1988).
5. Gifford, D.K., et al. *Boston Community Information System 1987 Experimental Test Results*, MIT/LCS/TR-422, MIT Laboratory for Computer Science, Cambridge, MA, August 1988.
6. Gifford, D.K. *Information Method and Apparatus Using Simplex and Duplex Communications*, U.S. Patent 4,845,658, July 4, 1989.
7. Lindsay, B.G., et al. Computation and communication in R*: A distributed database manager, *ACM Trans. on Computer Systems* 2, 1 (February 1984), pp. 24-38.
8. Lucassen, J., et al. *Boston Community Information System User's Manual* (Version 6.0), MIT/LCS/TR-352, MIT Laboratory for Computer Science, Cambridge, MA, April 1986.
9. Mainstream Data. *FM Data Broadcasting System*, pamphlet, Salt Lake City, Utah, 1987.
10. Rice, R. E., et al. *The new media: Communication, research, and technology*, Sage Publications, Beverly Hills, CA, 1984.
11. Segal, D., et al. *Boston Community Information System User's Manual* (Version 8.17), MIT/LCS/TR-373, MIT Laboratory for Computer Science, Cambridge, MA, September 1986.
12. Tanton, N.E. Teletex—Evaluation and potential, *IEEE Trans. Consum. Electronics*, vol. CE-25 (July 1979), pp. 246-250.
13. XPress Information Services. *You've got the PC, We have the Magic*, Golden, Colorado, 1986.

CR Categories and Subject Descriptors: C.0 [Computer Systems]: General—system architectures; C.2.1 [Computer Communication Networks]: Distributed Systems—distributed databases; H.3.4 [Information Storage and Retrieval]: Systems and Software—information networks; K.8 [Personal Computing]

General Terms: Design, Experimentation, Human Factors

Additional Key Words and Phrases: Active medium, content label, digital broadcast, polychannel system, query routing, update routing

ABOUT THE AUTHOR:

DAVID K. GIFFORD is associate professor of computer science and engineering at MIT. He leads the Boston Community Information System Project that he started in 1982. More recently his research group has been working in the area of software for parallel computers, and this research has produced the FX family of languages. Author's Present Address: Laboratory for Computer Science, MIT, 545 Technology Square, Cambridge, MA 02139.

Permission to copy without fee all or part of this material is granted provided that the copies are not made or distributed for direct commercial advantage, the ACM copyright notice and the title of the publication and its date appear, and notice is given that copying is by permission of the Association for Computing Machinery. To copy otherwise, or to republish, requires a fee and/or specific permission.